

Walk-in Slide: AU 2014 Social Media Feed

1. Click on the link below, this will open your web browser

<http://aucache.autodesk.com/social/visualization.html>

2. Use “Extended Display” to project the website on screen if you plan to work on your computer. Use “Duplicate” to display same image on screen and computer.

Using InfraWorks to Bring Revit to Life

Kristin Rhein
Technical Specialist

Class summary

This course is designed to show architecture, engineering, and construction (AEC) professionals the advantage they will gain in learning the workflow between Revit software and InfraWorks software. InfraWorks software is a tool that helps to create models that simulate our design concepts within the surrounding environment. InfraWorks software is known for its infrastructure capabilities, but this course will show AEC professionals that they are missing out. With the new Revit software import tool, architects can take advantage of an intelligent environment and incorporate their designs into existing scenes. Learn how design changes become easy to accomplish by updating the Revit software model and obtaining the ability to sketch new conceptual design elements directly in InfraWorks software. This course will guide you through the steps of creating high-quality conceptual models and visually compelling 3D planning proposals from Revit software to InfraWorks software

Key learning objectives

At the end of this class, you will be able to:

- Import Revit Software models
- Add massing and site detail to your InfraWorks software model
- Create design alternatives on a site plan
- Generate animations producing visually compelling 3D planning proposals

To Sum it up: You will know a basic Revit to InfraWorks Workflow and Tips and Tricks to get you up and running!

*We will be doing live demo and instruction. Handouts have been updated and have all of the instruction on how to complete this workflow. If we run into technical difficulties I have trivia questions and prizes!

Step 1: Creating an InfraWorks Model

InfraWorks vs. InfraWorks 360



InfraWorks

- Manually Import GIS Data
- Has all of the layout features (roads, buildings, plants, coverage areas, etc.)
- Visualization
- Sight analysis
- Shadows and lighting

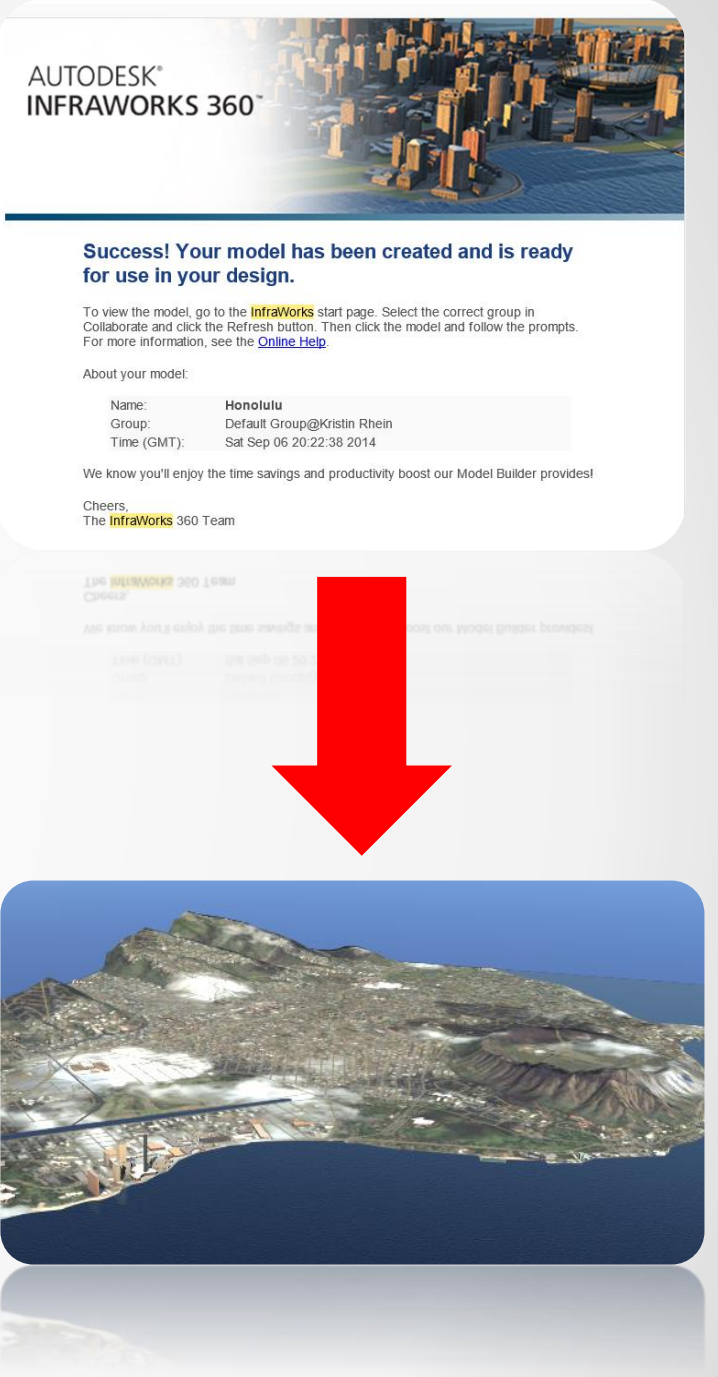
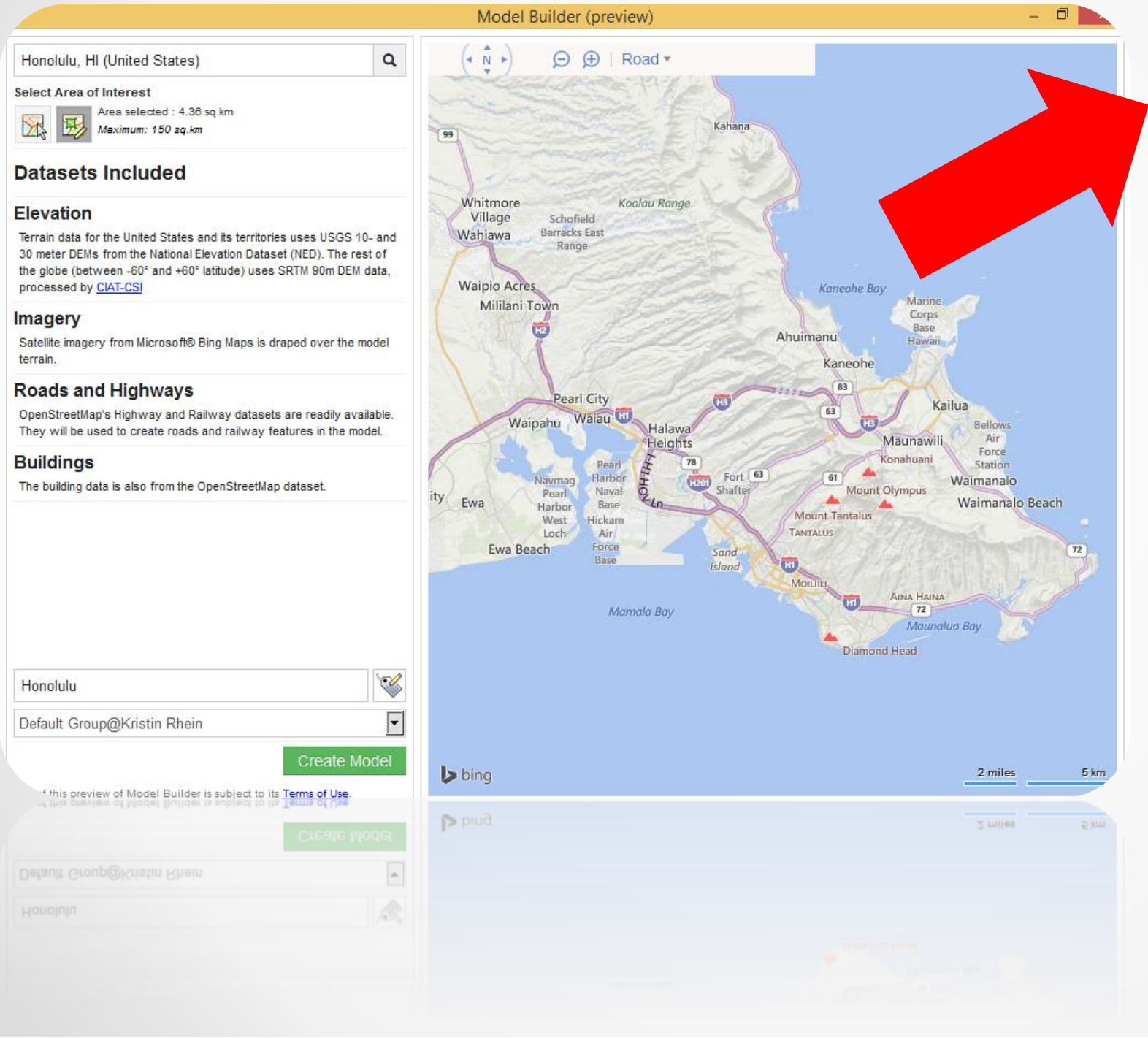


InfraWorks 360

- Allows online collaboration with other InfraWorks 360 users
- InfraWorks 360 uses Autodesk servers to convert 3D models to InfraWorks data (REVIT)
- Model Builder – Create a model simply by choosing the area you are interested in on a map (this is a preview function and may not be in the product in the future).
- Has everything standard InfraWorks has + more!

Creating Models

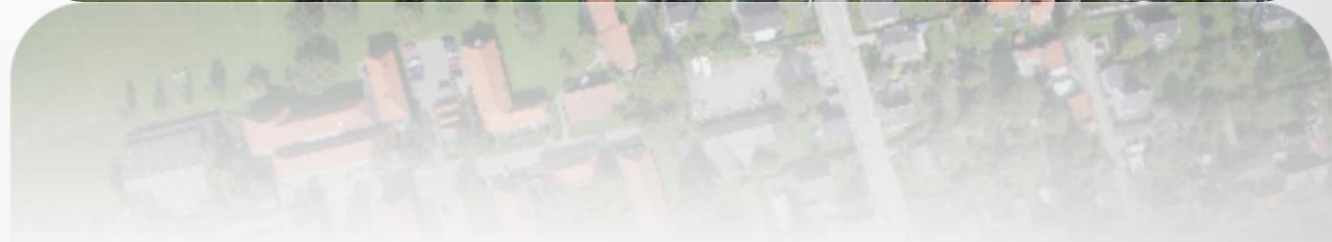
Model Builder vs. Manual



GIS Data: Where to find it?

Looking to Import Manually? No Model Builder Option..... No worries

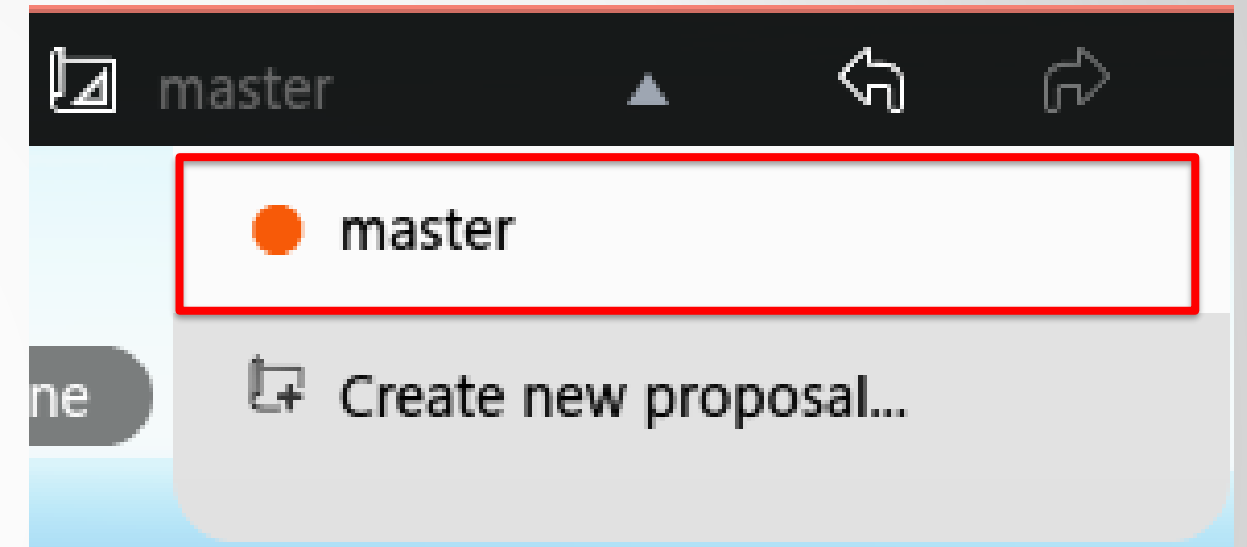
- County Sites
- USGS.com
- GISDepot.com
- WeoGeo.com
- 3D Warehouse for Buildings



Step 2: Creating Proposals & Design Alternatives

Design Proposals

- Always start with your **Master** (existing conditions)
- Create a new proposal before you add data to the model
- Delete, add, update, change your design proposals at any time

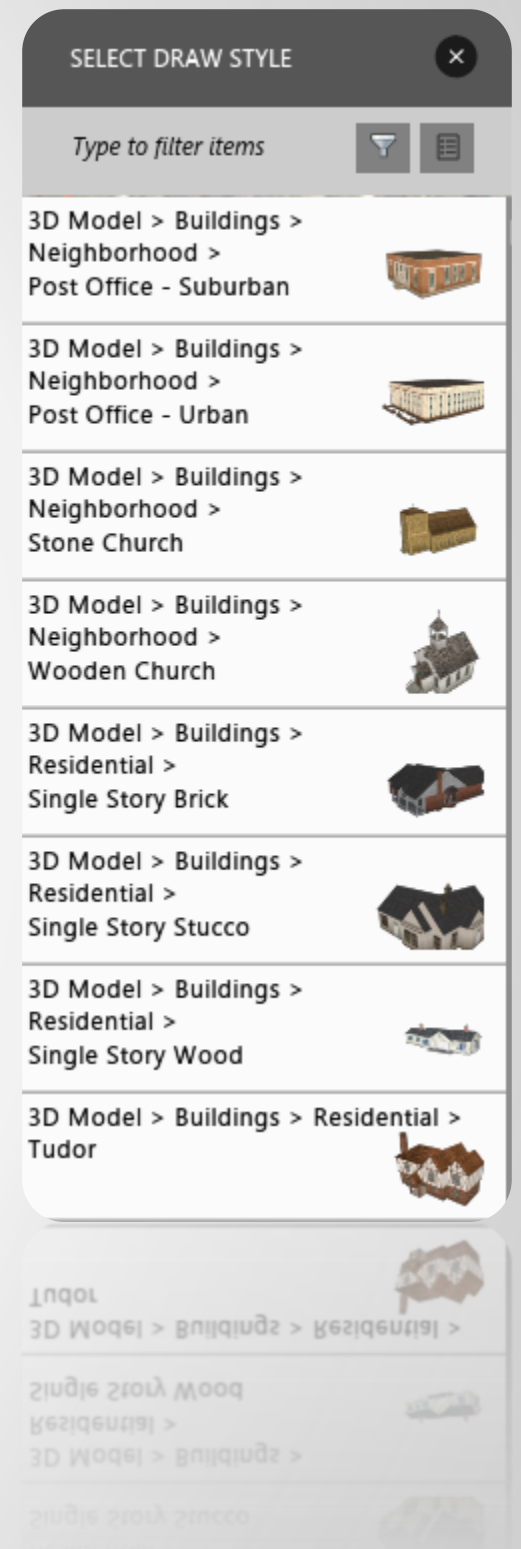


Step 3: Set Up Existing Conditions

- **Adding Massing and Site Detail to your InfraWorks Model**

Creating Existing Conditions

- Add **Coverage** over existing imagery for a clean look
- Add existing **vegetation** (Water, Trees, Sand, Plants)
- Use conceptual **Building** tools in InfraWorks to add existing buildings
 - City Furniture: Neighborhood, Residential, Furniture

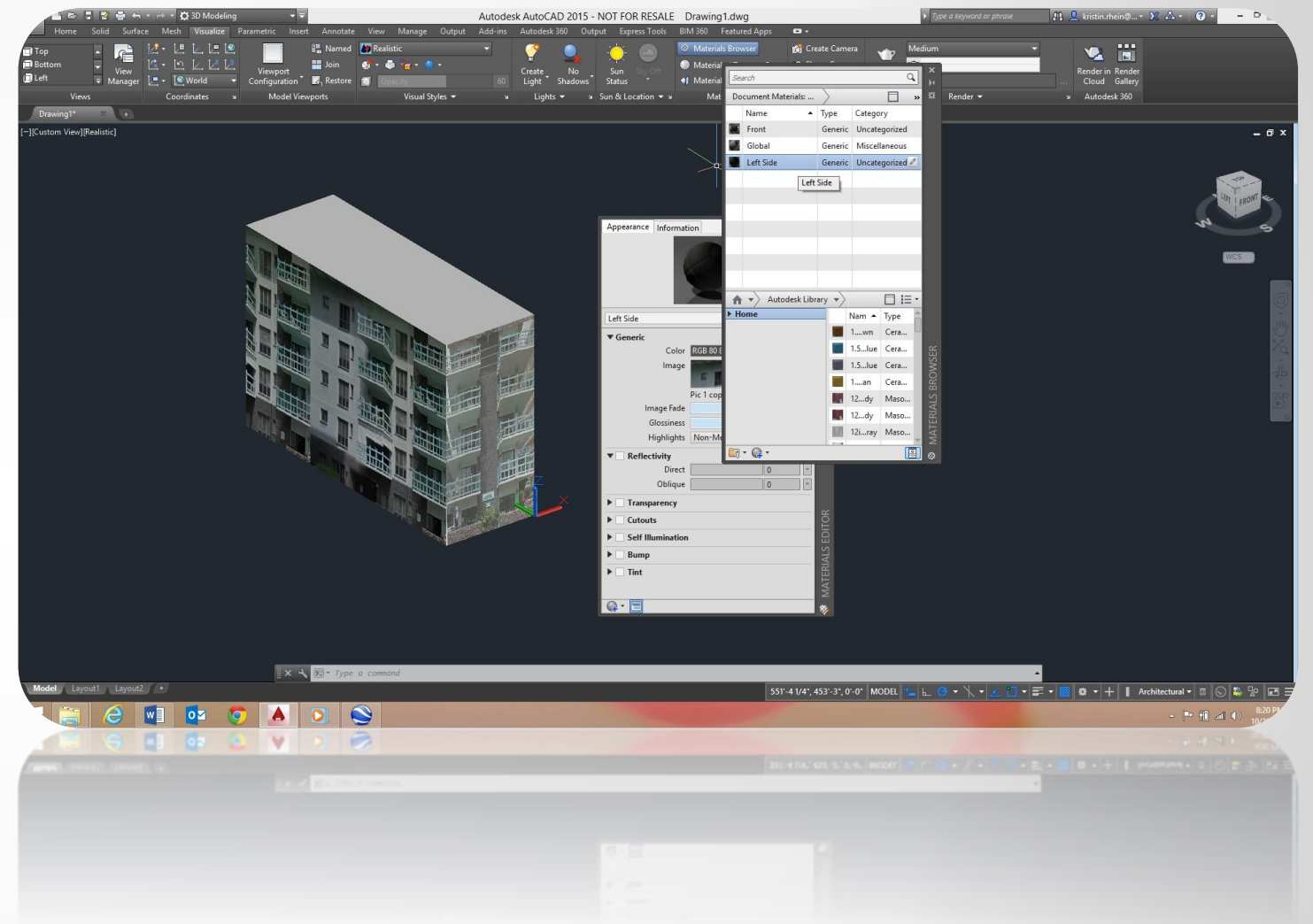


Creating Existing Conditions: Taking it to the Next Level

Looking to create existing conditions that are more realistic to the actual location of the site?

Creating custom façades on a 3D building is a fast solution!

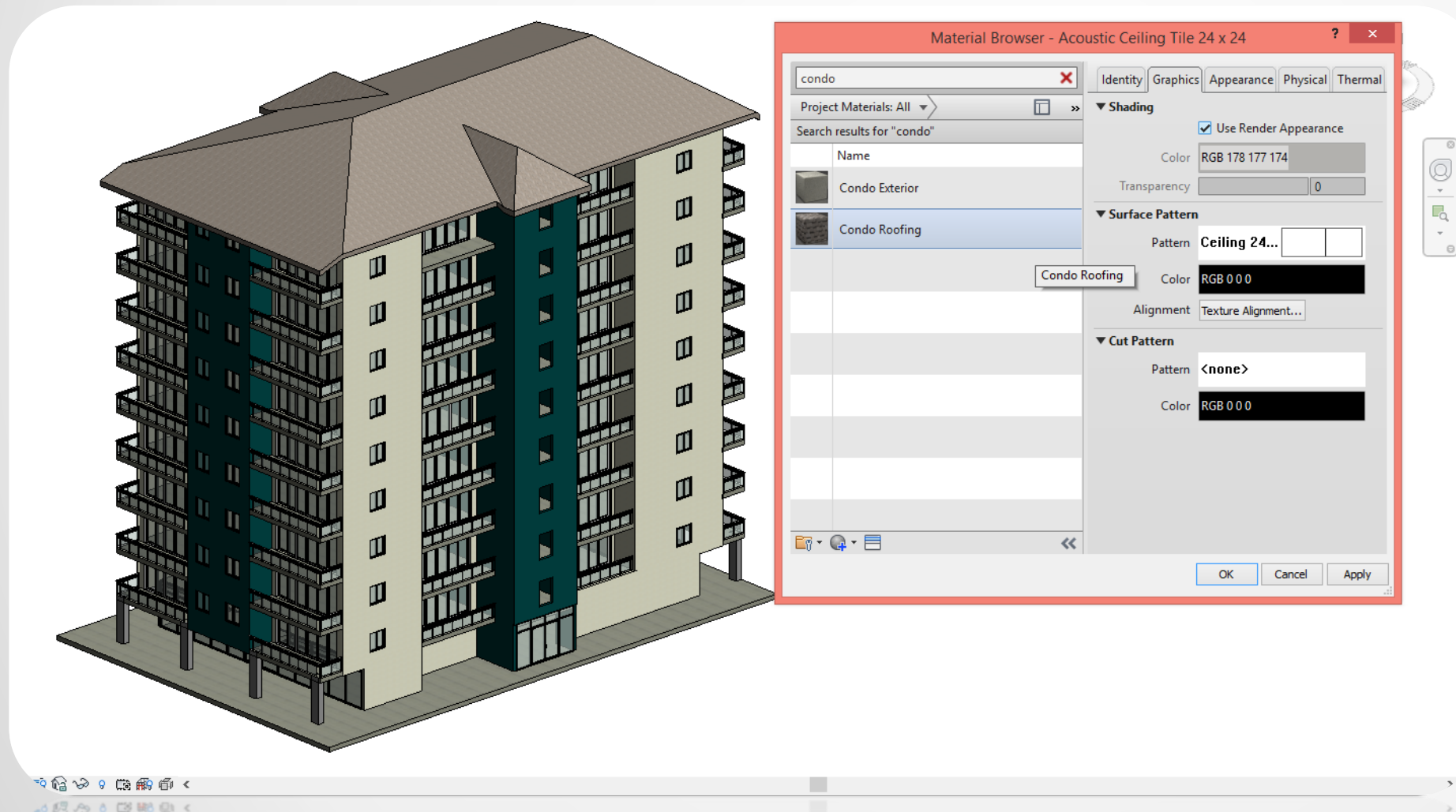
Helpful Tip: Custom façades in InfraWorks take a lot of time. A quicker solution is to create them in another program like AutoCAD!



Step 4: Importing Revit Models

Preparing the Model for Import

Your Revit model should appear as complete as possible for importing into InfraWorks. Once in InfraWorks the model can not be edited in terms of materials and structural appearance.



Helpful Tips:

- Apply Materials (no custom textures)
- If you are using vanilla InfraWorks save the Revit file to FBX format.
- Apply a coordinate system if you don't want to use Interactive Placement in InfraWorks

Materials & Workarounds

Latest release appears to have update material appearances from Revit. Below is FBX import from Navisworks vs Revit import.

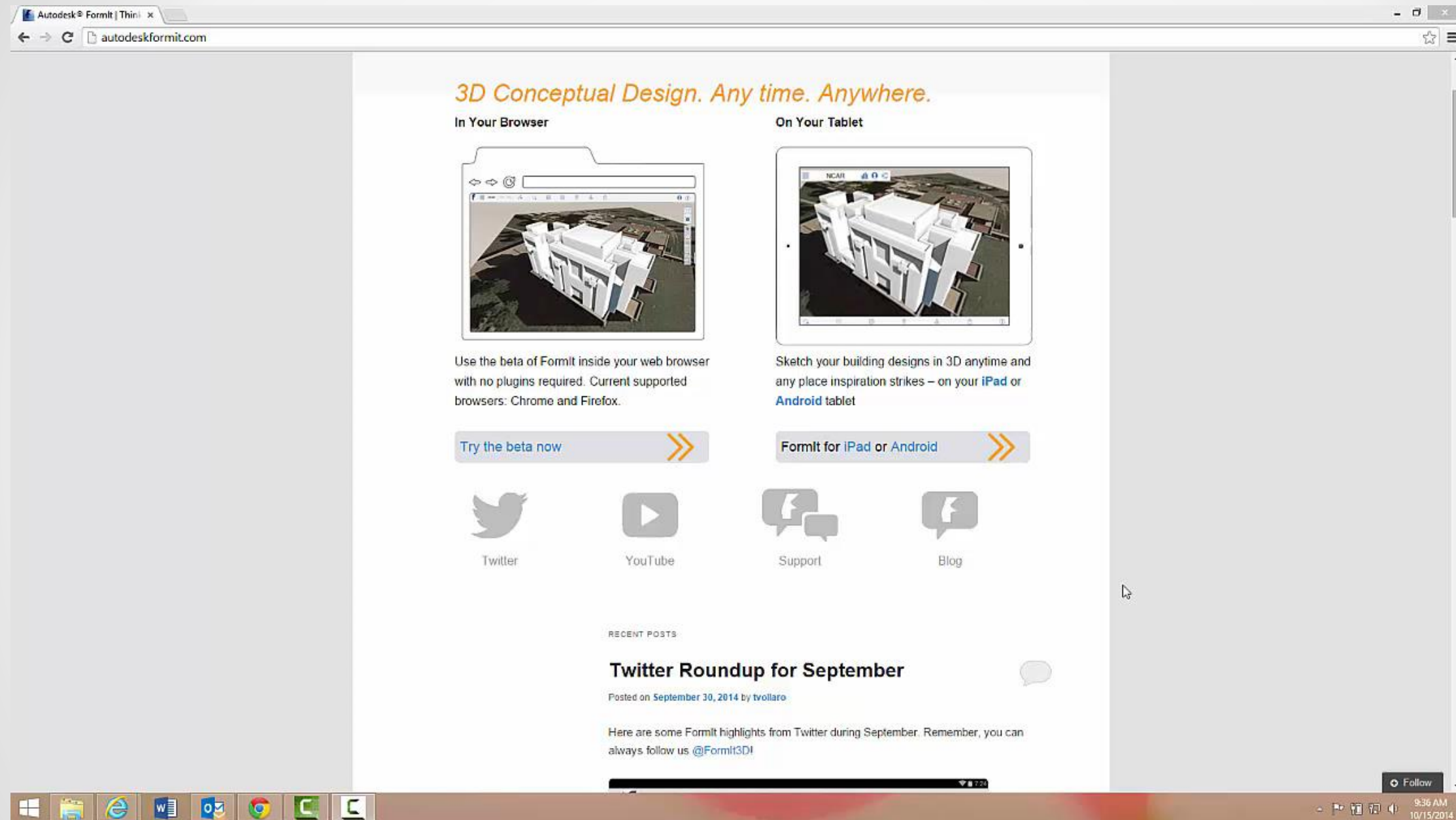


Helpful Tip:

For Versions prior to the latest release (R1 or previous)

- 1) Export Revit to NWC.
- 2) Export NWC to FBX
- 3) Import FBX into InfraWorks

Other Revit Friendly Applications



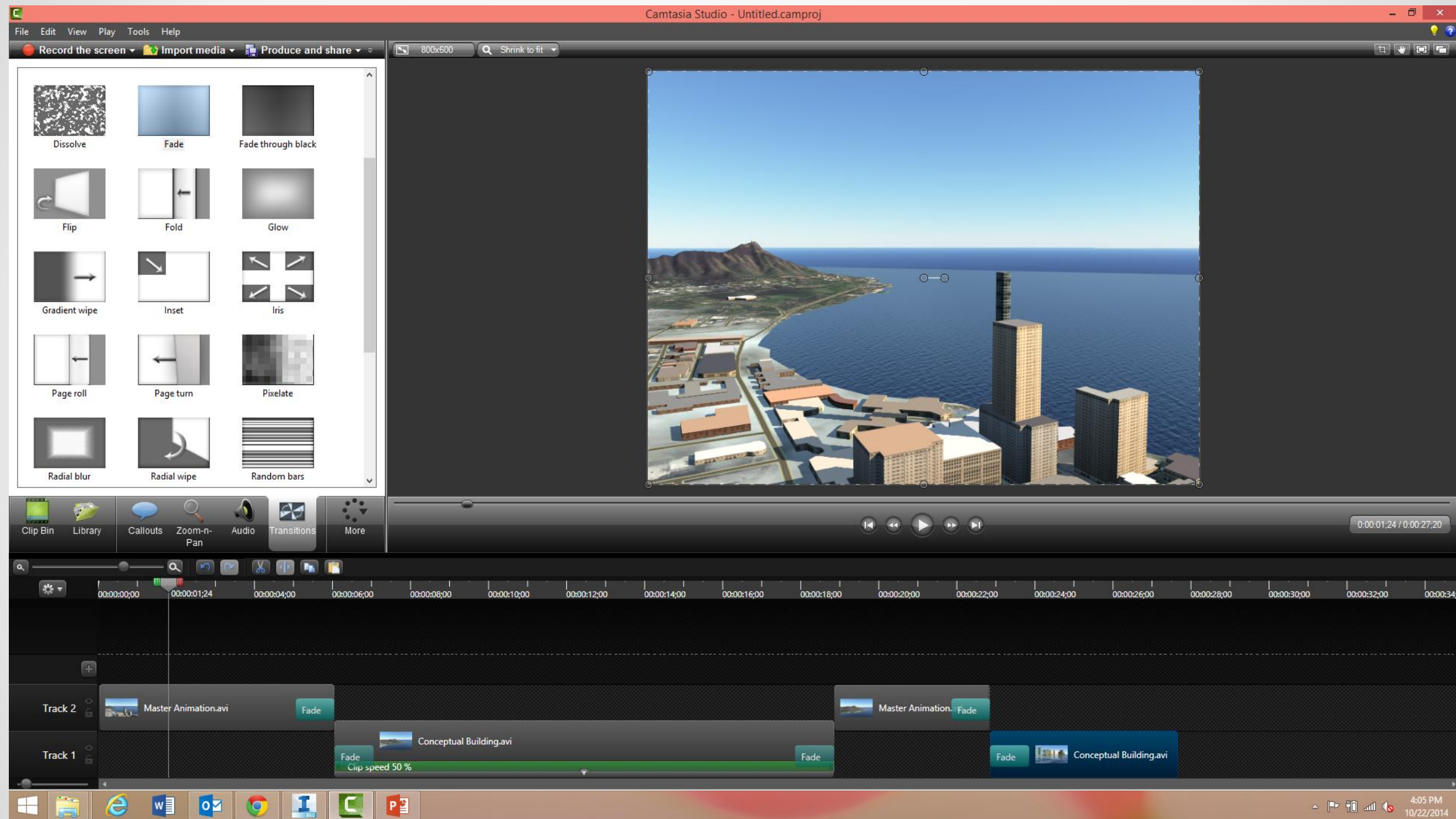
Step 5: Creating Presentations in InfraWorks

InfraWorks Animation

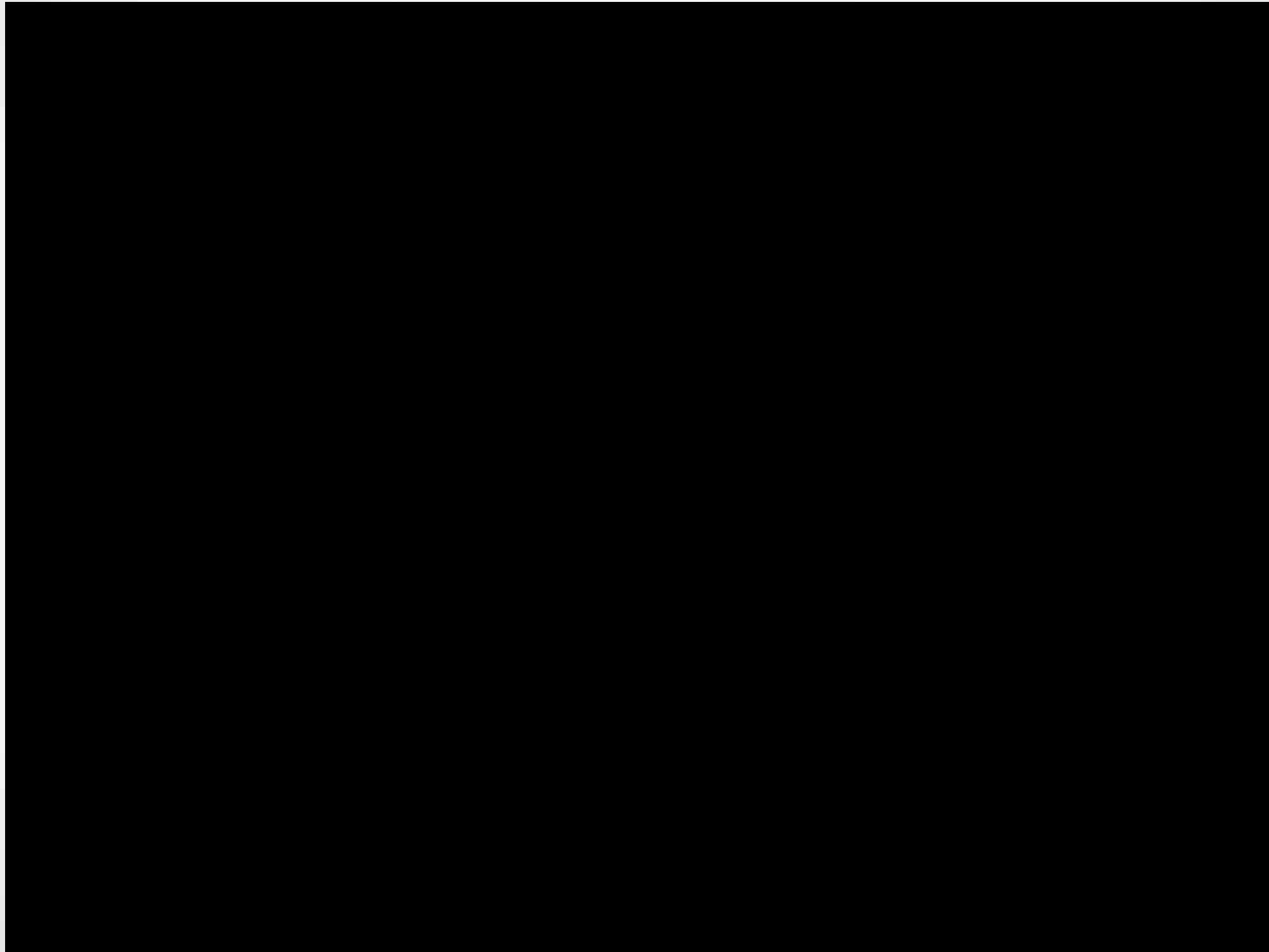


- Fast & EASY
- Animate with Sun and Sky Changes
- Game Changer for Winning Bids
- Take it to another level with other Editing Software

Taking it to the Next Level



Taking it to the Next Level



For Questions or Comments please see me
after or email me at
Kristin.rhein@uscad.com

Mahalo!

Session Feedback

- Via the Survey Stations, email or mobile device
- AU 2015 passes given out each day!
- Best to do it right after the session
- Instructors see results in real-time







Students, educators, and schools now have

FREE access to Autodesk design software & apps.

Download at www.autodesk.com/education



Earn your professional Autodesk Certification at AU

Visit the [AU Certification Lab](#)