

# How to Use Autodesk Cloud Technology to Simplify Your New Product Introduction NPI Process

Simon Eaves

d2m3 Ltd PLM

Join the conversation #AUCity #AU2018





# Class Overview





# Use Autodesk Cloud Technology to Simplify Your New Product Introduction Process.

- Attendees of this class will learn how, through the use of the Autodesk Fusion Lifecycle platform, manufacturing companies are able to accelerate their New Product Introduction process reducing the time to market and, as result, increase commercial opportunities.
  - See how Fusion Lifecycle can be used to document even the most complex of NPI processes.
  - Learn how process workflows can be used to improve collaboration by engaging and organising disparate teams and departments.
  - See how tasks can be assigned to an individual or department so that there is a clear accountability for all NPI related actions.
  - Understand how, having real-time accurate reports, can provide management a high-level view of any given project.



# Introductions







## About the Speaker

### PDM PLM Consultant

Simon Eaves is a technical consultant for d2m3 Ltd specialising in helping companies improve productivity through the use of PDM\PLM Solutions. With over 20 years' experience, Simon has implemented a variety of management solutions for many companies across a number of industries. Over the last 3 years, Simon has become one of the country's leading Fusion Lifecycle Consultants. When not evangelising about Autodesk's Fusion Lifecycle solution, you will most often find Simon walking up and down the hills of the Peak District.





# About d2m3

- d2m3 is a leading data management software integrator specialising in TDM, PDM & PLM systems.
- With over 20 years experience implementing Solutions for customers throughout the UK, Europe and North America.
- And a...Fusion Lifecycle Specialised Partner

**AUTODESK® FUSION LIFECYCLE**





# d2m3 - What do we do..?

Provide the resources to help our clients enhance their businesses to become more;

- + Effective
- + Productive
- + Successful

by creating more quality **time** within your design & management related functions.





# Business Challenges...

❌ *Chaos...*

❌ *Mistakes...*

❌ *Delays...*





# Autodesk Fusion Lifecycle





# Meet those Challenges with Autodesk Fusion Lifecycle

✓ *Order...*

✓ *Accuracy...*

✓ *Acceleration...*

New Product Development





# What is Autodesk Fusion Lifecycle..?

## A Product Lifecycle Management Solution

Product Lifecycle Management (PLM) is the process of managing the entire lifecycle of a product from its conception, through design and manufacture, to service and disposal.

PLM integrates people, data, processes and business systems and provides a product information backbone for companies and their extended enterprise.



# AUTODESK® FUSION LIFECYCLE



# What is Autodesk Fusion Lifecycle..?

## A Product Lifecycle Management Solution

Fusion Lifecycle is a Product Lifecycle Management (PLM) system that connects and organises people, processes, and information improving how companies create, build, support and evolve products and services.



# AUTODESK® FUSION LIFECYCLE



# Autodesk Fusion Lifecycle



**Cloud-based**  
zero deployment



**Accessible**  
on any device



**Role Based**  
Access



**Fast Speed**  
to Production



# Fusion Lifecycle Standard Capabilities





# But Autodesk Fusion Lifecycle is much more...

- Quality Management
- Project Management
- Task Management
- Requirements
- Lean Six Sigma
- Change Management
- Document Control
- ISO 9001
- Deviation Waiver
- Risk Analysis
- Feasibility Study
- Sales Handover
- Inspections
- Service
- Installation
- Root Cause Analysis
- Calibration
- FMEA
- Asset Management
- Suppliers
- RFQ
- Project Costing
- NPI\NPD
- REACH & RoHS
- Improvement Charter
- Lean 5S
- Tooling
- Prototype Management
- Accident Reports
- Audits
- Lessons Learnt
- QIP
- Technical Requirements
- Products
- Warranty
- Item Management



# Introduction to Fusion Lifecycle





Sign in



Email

simon@d2m3

NEXT

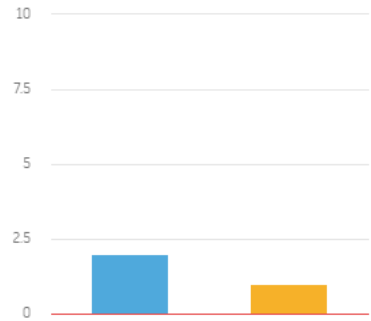
NEW TO AUTODESK? [CREATE ACCOUNT](#)

Secure Login



Charts

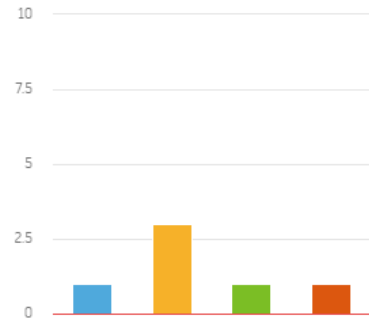
CO's By Workflow State



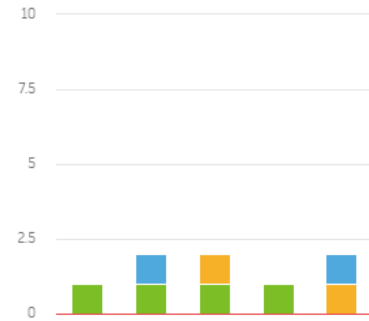
CR's Count by State



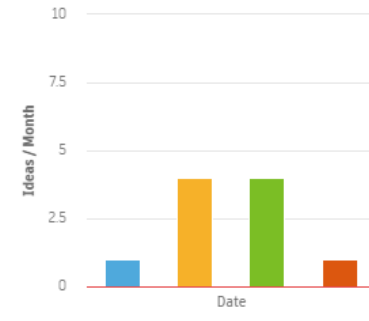
CAPA Count by State



NCR Count by Supplier



New Idea / Month

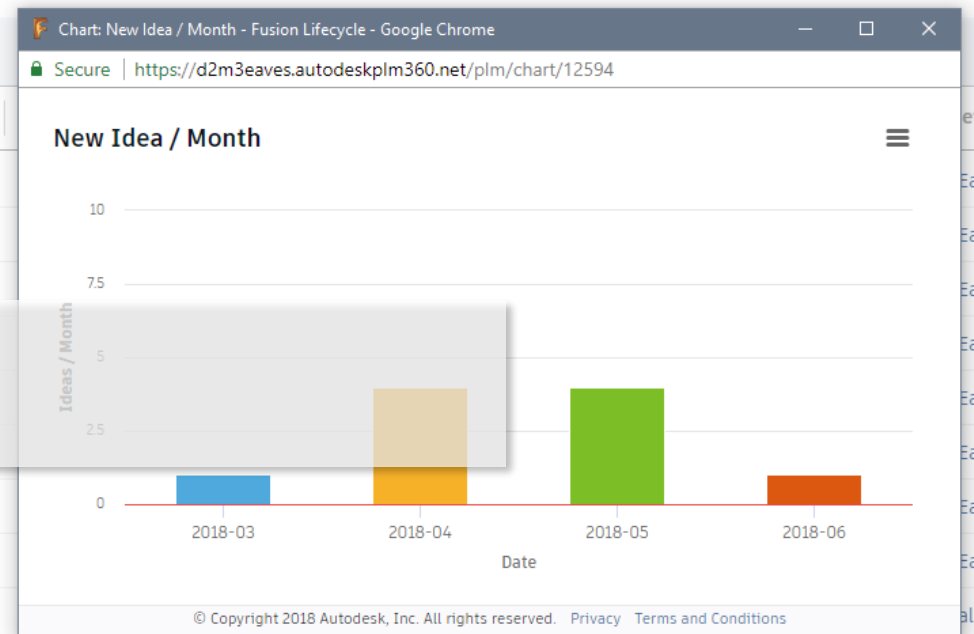


My Outstanding Work

Due Date	Item Name
	AU000057 - Abracon -
	NIS000005
	NC000017 - DIN 963 - M1.6 x 6 - Countersunk Screw
	CO000003 - Quick Release
	AU000055 - d2m3 Ltd -
	CA000009 - CAPA for: null
	CO000002 - d2m3 TEST 03
	TL000002 - 1.5m Lathe
	TL000005 - carters

Home Page

03/03/2018





Dashboard - Fusion Lifecycle

Secure | https://d2m3eaves.autodeskplm360.net/plm/mainDashboard

AppsAccountsAutodeskd2m3DrivesEPDMLCFLC DemoFLC ProjectsMedia/EventsPLM WikiScriptingSocial/ProfilesTravel\* Home | TrelloUtilitiesTime Management

AUTODESK FUSION

Lifecycle

Workspaces

Change Management

CR's By Workflow State

Customer Relations

Employee Management

Examples

Miscellaneous

PDM Connector

Product Development

Product Introduction

Project Documents

Quality

Reference

Supply Chain

Tasks & Management

Welding Schedules

SE Testing

CR's Count by State

CAPA Count by State

NCR Count by Supplier

New Idea / Month

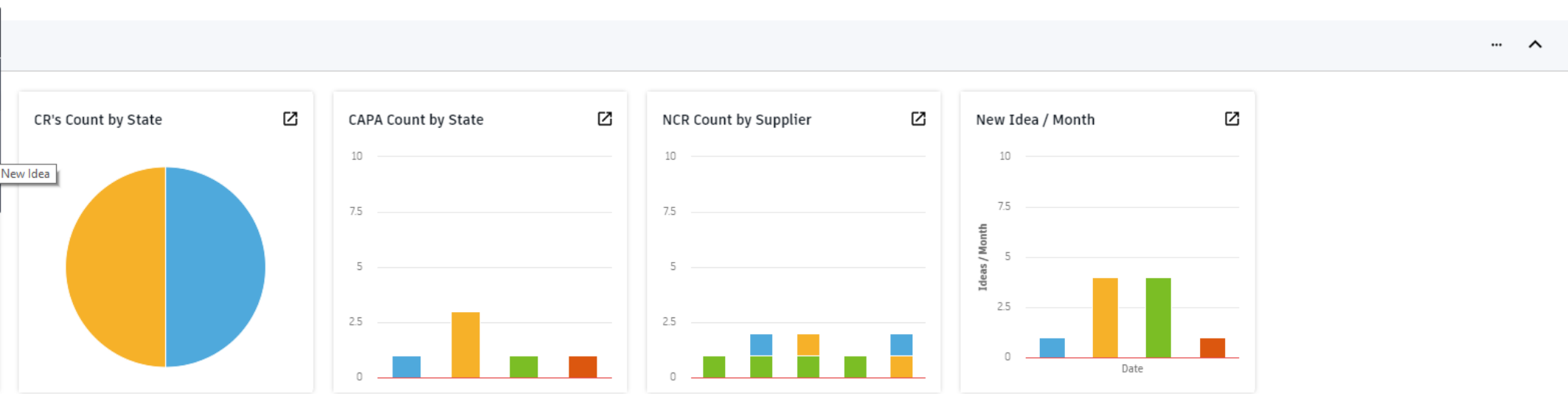
	Item Name	Workspace	State	State Set On	State Set By
	AU000057 - Abracon -	Autodesk - Audits	Create	30/05/2018	Simon Eaves
	NIS000005	d2m3 - New Idea	Idea Review	30/05/2018	Simon Eaves
	NC000017 - DIN 963 - M1.6 x 6 - Countersunk Screw	Autodesk - Non Conformances	Disposition	08/03/2018	Simon Eaves
	CO000003 - Quick Release	Autodesk - Change Orders	Create	08/03/2018	Simon Eaves
	AU000055 - d2m3 Ltd -	Autodesk - Audits	Create	30/05/2018	Simon Eaves
	CA000009 - CAPA for: null	Autodesk - Corrective / Preventative ...	Create	14/02/2018	Simon Eaves
	CO000002 - d2m3 TEST 03	Autodesk - Change Orders	Create	14/02/2018	Simon Eaves
	TL000002 - 1.5m Lathe	Autodesk - Calibration	[03] Calibration In-Pro...	14/02/2018	Simon Eaves
	TL000005 - carters	Autodesk - Calibration	[02] In-Service	14/02/2018	keith ball

Navigation – Main Menu

© Copyright 2018 Autodesk, Inc. All rights reserved. Privacy Terms and Conditions



- < Product Introduction
- d2m3 - Competitors
- d2m3 - New Idea
- d2m3 - NPI



My Outstanding Work					
Due Date	Item Name	Workspace	State	State Set On	State Set By
	AU000057 - Abracon -	Autodesk - Audits	Create	30/05/2018	Simon Eaves
	NIS000005	d2m3 - New Idea	Idea Review	30/05/2018	Simon Eaves
	NC000017 - DIN 963 - M1.6 x 6 - Countersunk Screw	Autodesk - Non Conformances	Disposition	08/03/2018	Simon Eaves
	CO000003 - Quick Release	Autodesk - Change Orders	Create	08/03/2018	Simon Eaves
	AU000055 - d2m3 Ltd -	Autodesk - Audits	Create	14/02/2018	Simon Eaves
	CA000009 - CAPA for: null	Autodesk - Corrective / Preventative ...	Create	14/02/2018	Simon Eaves
	CO000002 - d2m3 TEST 03	Autodesk - Change Orders	Create	14/02/2018	Simon Eaves
	TL000002 - 1.5m Lathe	Autodesk - Calibration	[03] Calibration In-Pro...	14/02/2018	Simon Eaves
	TL000005 - carters	Autodesk - Calibration	[02] In-Service	14/02/2018	keith ball

Navigation – Workspace Selection



Item Descriptor ↓	Idea Description	Qualification Value Glyph	Current State	Date Raised
NIS000011	Twin Selectable Pump	Group B	Kick Off Product Development	01/06/2018
NIS000010	Great idea for a new drill	Group C	Kick Off Product Development	30/05/2018
NIS000009	I have another GREAT idea!	Group B	Draft	18/04/2018
NIS000008	I have another GREAT idea!	Group B	Draft	18/04/2018
NIS000007	I have another GREAT idea!	Group B	Draft	18/03/2018
NIS000006	I have another GREAT idea!	Group B	Draft	18/04/2018
NIS000005	New Air Blower concept....	Group C	Idea Review	30/05/2018
NIS000004	New Air Blower concept....	Not Qualified	Kick Off Product Development	13/04/2018
NIS000003	We could make this much better!!!!	Group A	Kick Off Product Development	24/05/2018
NIS000002	I have another GREAT idea!	Group B	Kick Off Product Development	18/05/2018
NIS000001	I have a GREAT idea!	Group B	Kick Off Product Development	25/04/2018

# Workspace - Item Details



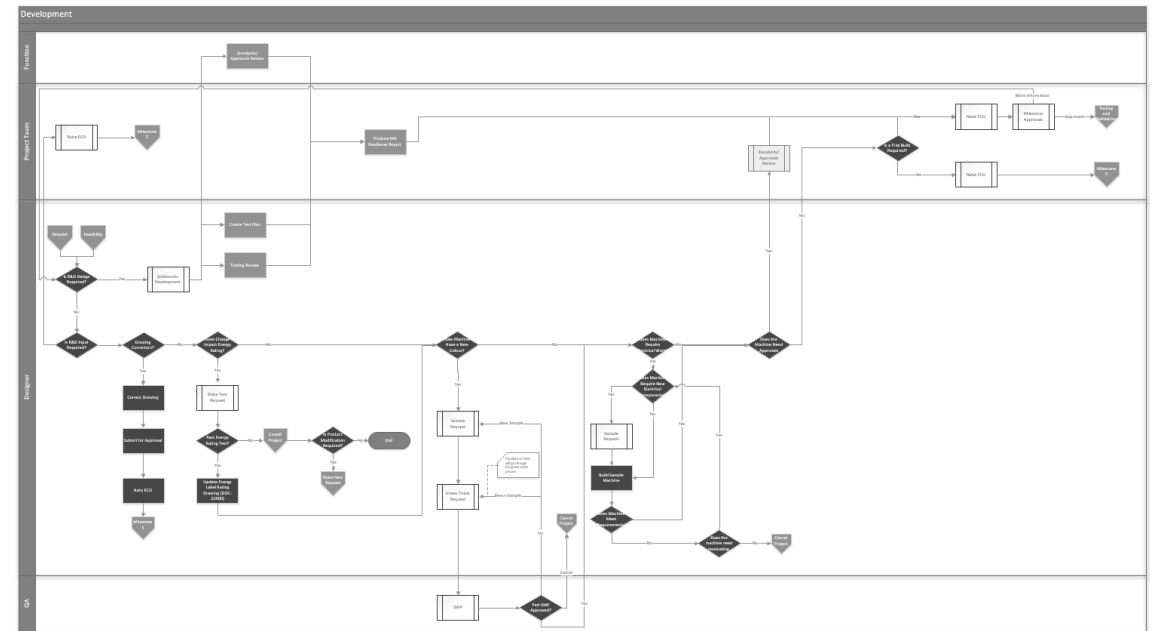
# Use Autodesk Cloud Technology to Simplify Your New Product Introduction Process





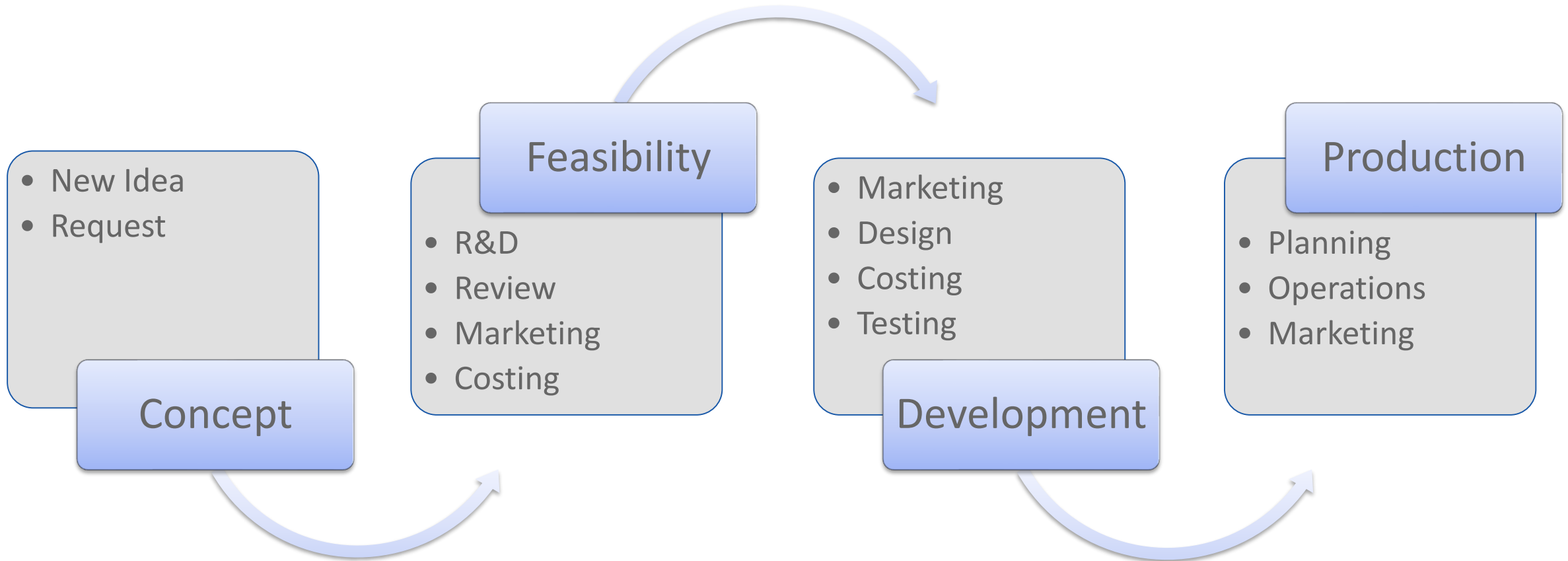
# Terms of Reference - NPI

- New Product Introduction (NPI) Process.
- The purpose of an NPI Process is to provide **rapid** R&D, Prototyping and Production Planning Services - on **time**, on budget, with the highest level of **quality** to minimize our Customers' **time** to market and ensure **reliable** future production.





# Typical NPI Process





# Approval Teams



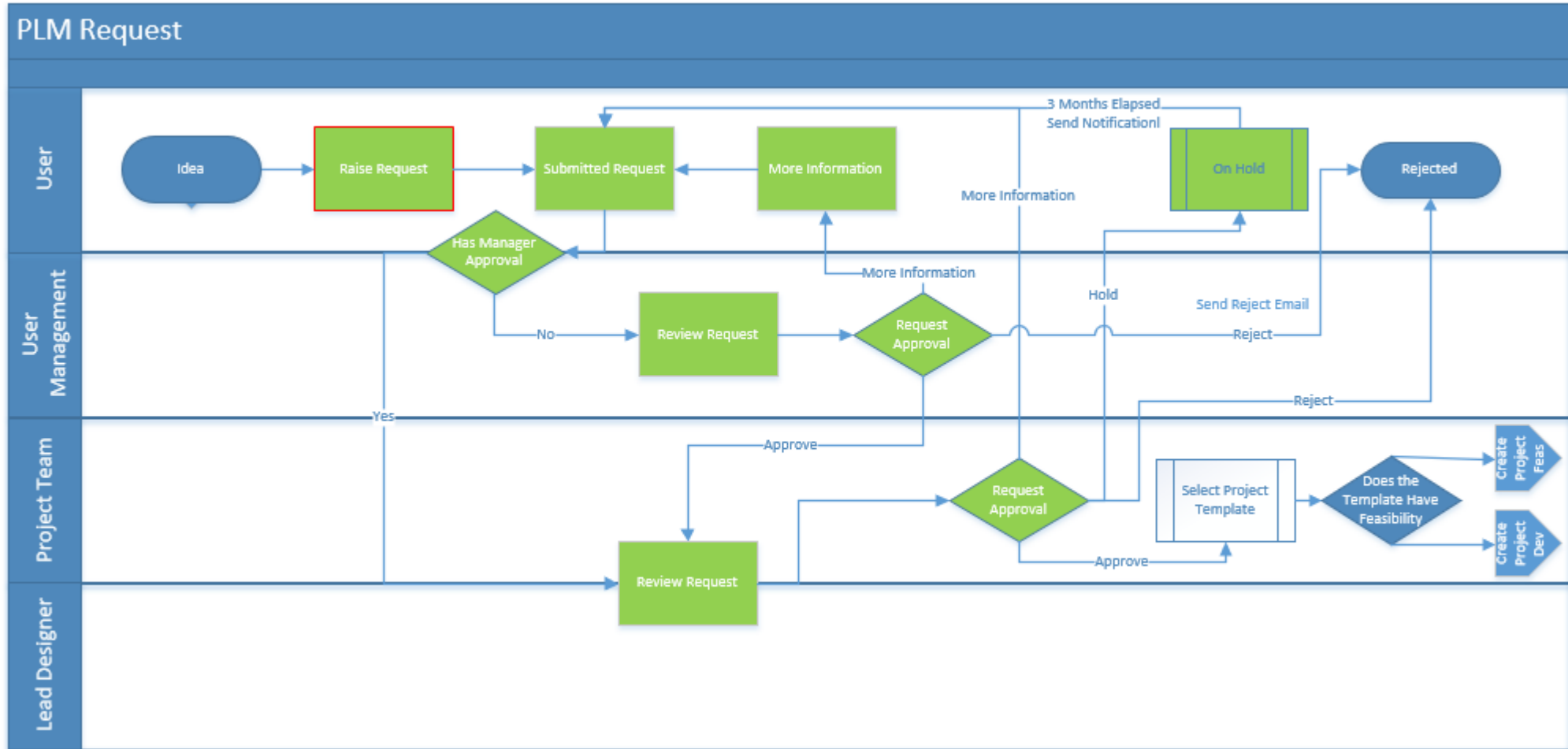


# What Does a Real-World NPI Processes Look Like?

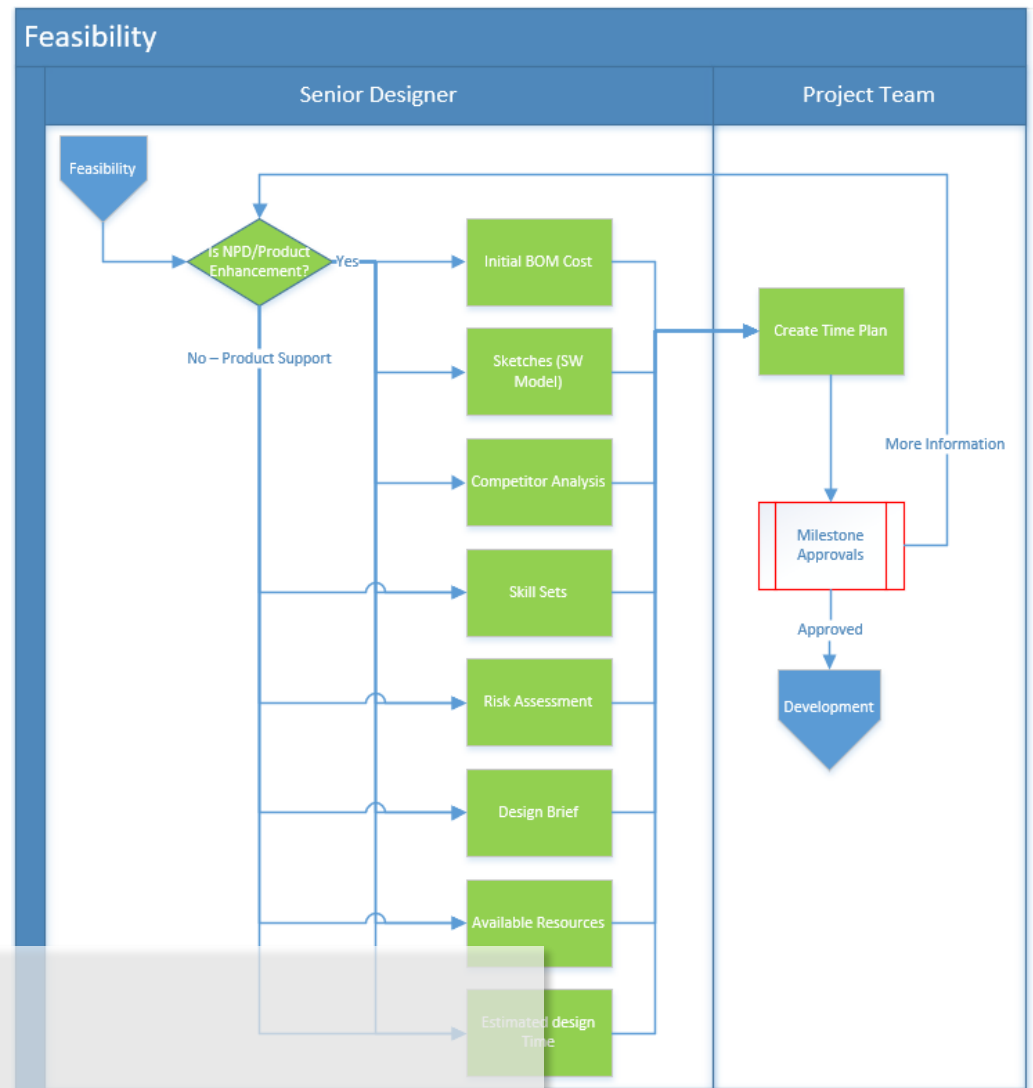




# New Idea/Request







Condition Gates





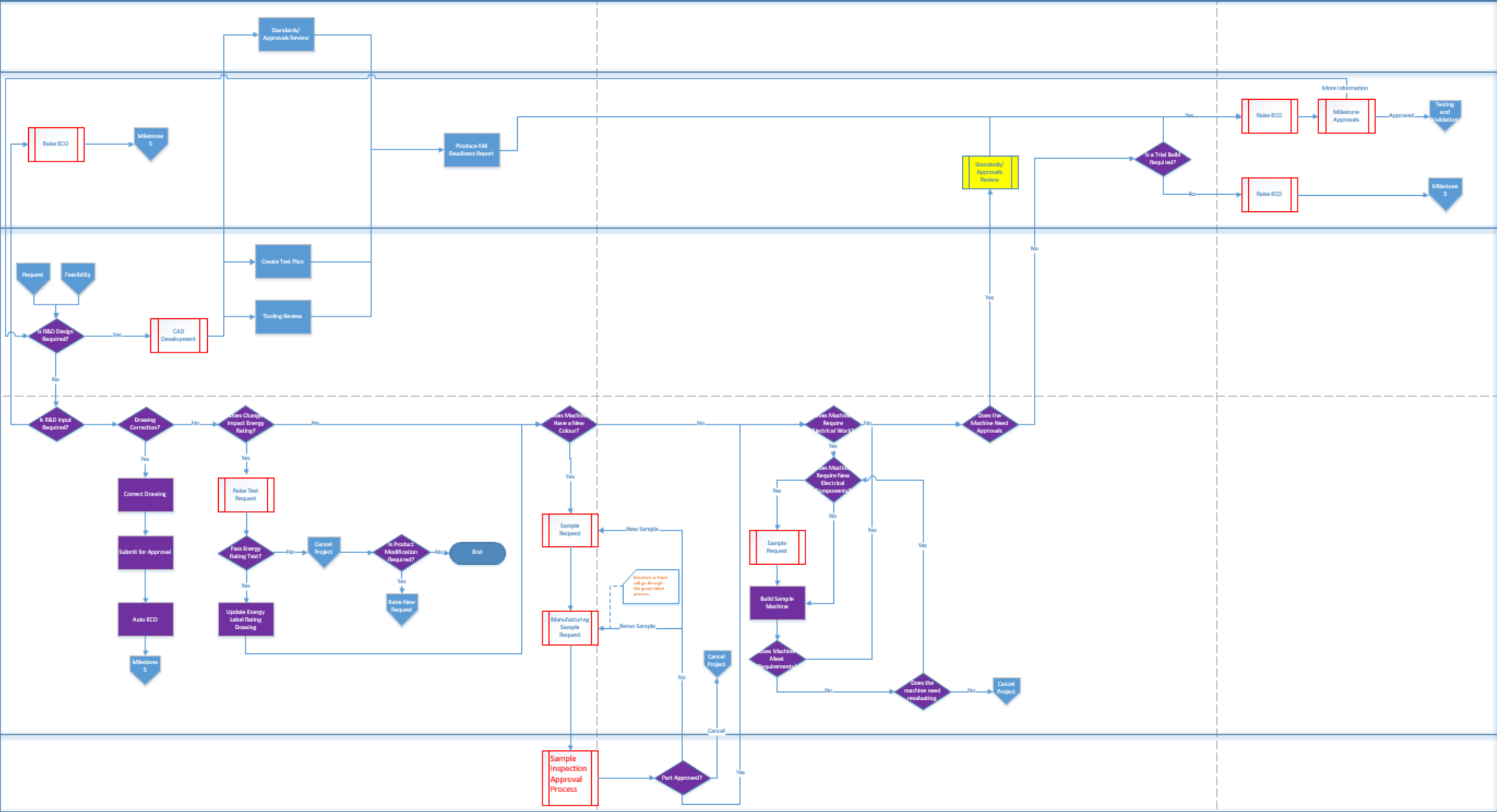


Function

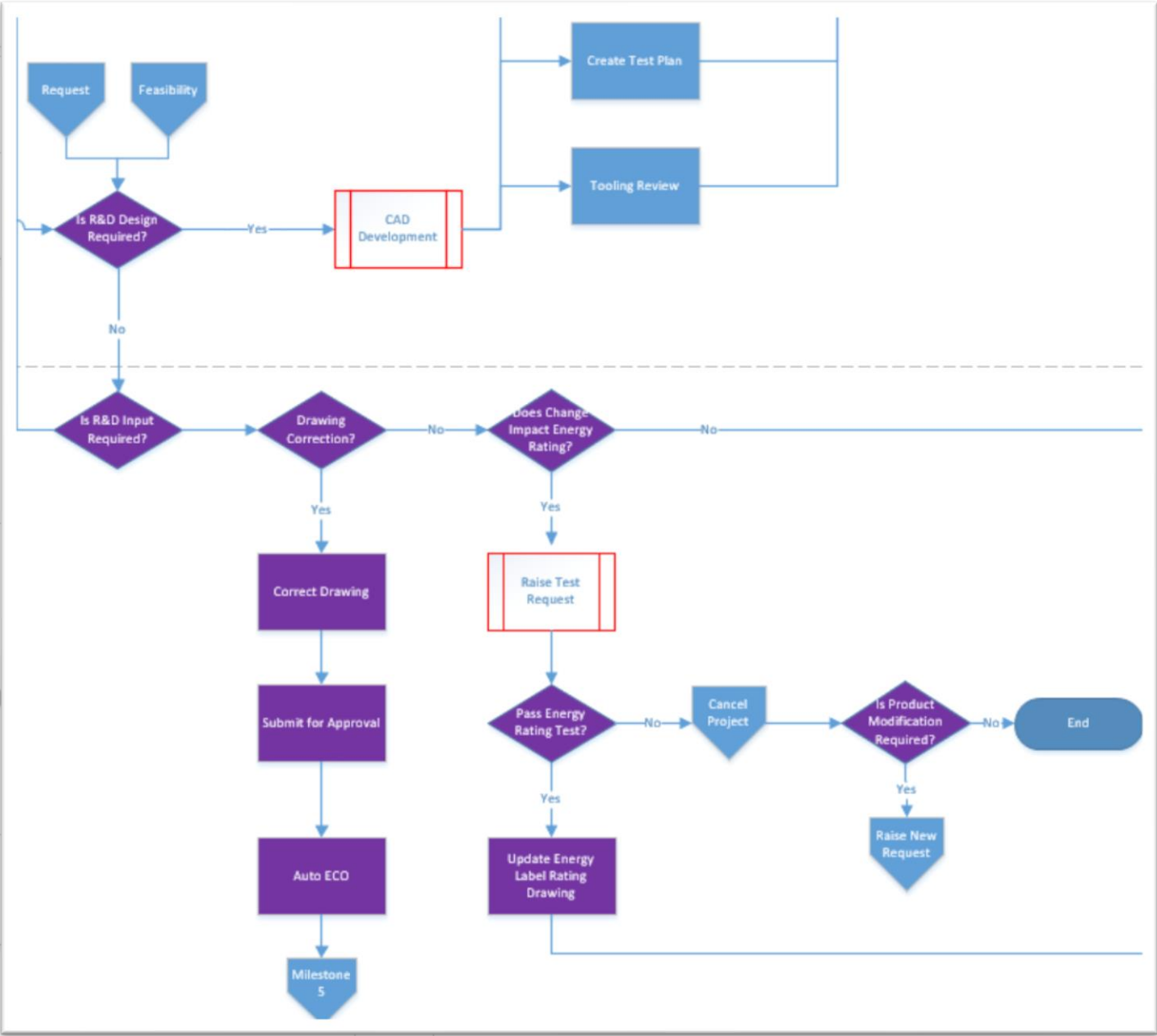
Project Team

Designer

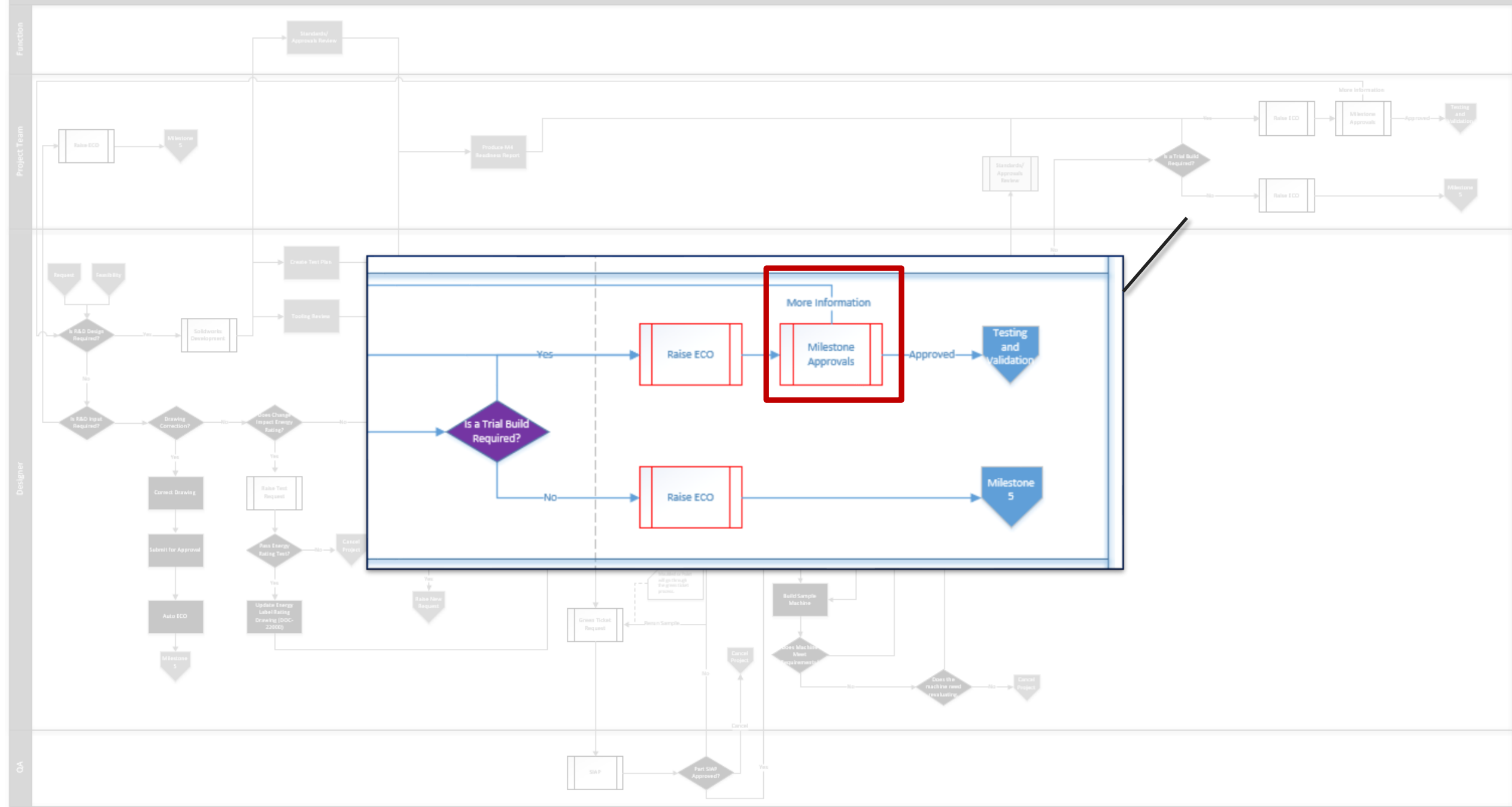
QA





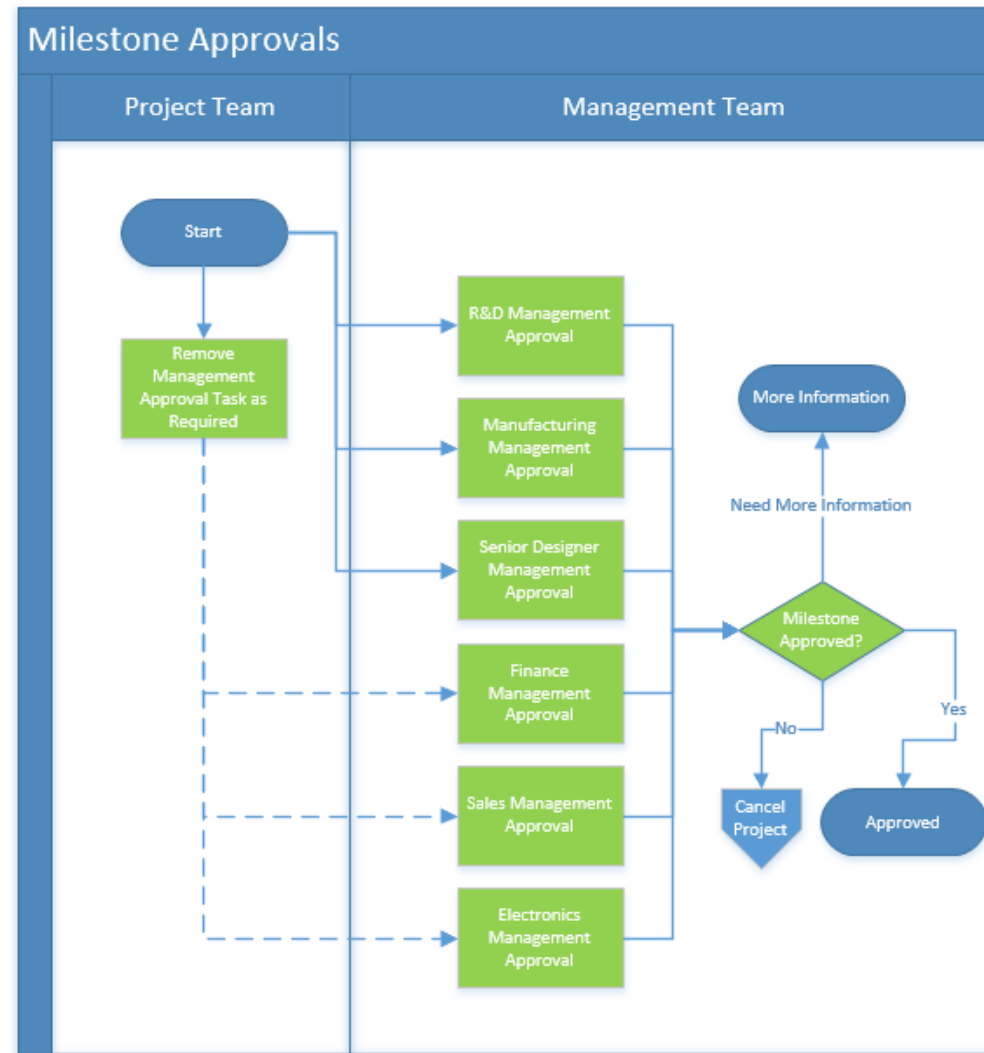








# Milestone Approval





# 90% of the Time, But, However, Sometimes, Occasionally...

We need dynamic, adaptable processes...

Not all NPI/NPD are the same!!!!

Whether that be from one Company to another or...

Product Range to Product Range or...Product to Product



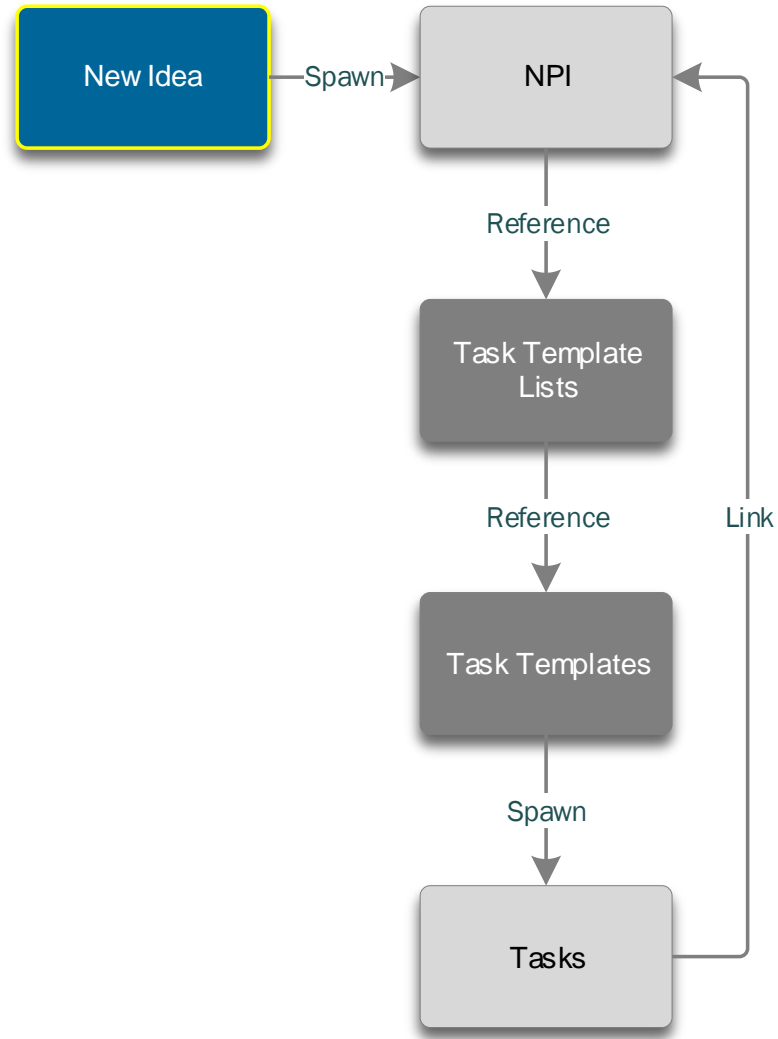


# Using Fusion Lifecycle for NPI – New Idea





# NPI Process – New Idea Phase





# Data Collection

## Standardised, Controlled Data Collection

- Fully Configurable Forms
  - Text Fields, Date Pickers, Formatted Paragraphs Blocks, Check Boxes, Pick Lists etc...
- Field Validation
  - Mandatory Fields, Range Validations,
- Linked Records
  - Related Items between different workspaces
- File Attachments
  - Any File!

The screenshot shows the 'Editing a Field' dialog box in the Autodesk Fusion Lifecycle application. The dialog is titled 'Editing a Field' and has 'Save' and 'Cancel' buttons at the top. It contains several fields and options for configuring a data field:

- Field name:** Gate 1 Approval Group Item. A note states: 'The field name is the name you wish to be displayed on the workspace for this field.'
- Field ID:** GATE\_1\_APPROVAL\_GRO. A note states: 'Automatically populated using Field Name. You can not edit the ID, and it must be unique to the workspace.'
- Field description:** An empty text area. A note states: 'Enter the description you want to appear next to the field when users are creating or editing an item in the workspace.'
- Data Type:** Pick List. A note states: 'Select a format for the field, e.g., Date, Paragraph, image etc.'
- Visible on preview:** A checkbox that is currently unchecked. A note states: 'If checked, this field will be visible on the data-card preview.'
- Pick List Options:**
  - [WS] Approval Board f Comm:** A dropdown menu.
  - New Picklist Edit Picklist:** A button.
  - Item Descriptor:** A dropdown menu.
  - Display as link:** A checked checkbox.
  - Type:** Radio buttons for Single Selection (selected), Show first value as default, Retains Last Saved Label, With search filter, Multiple Selection, Latest Version, and Filtered.
- UOM:** A section with 'None' and 'Other' radio buttons and a text input field. A note states: 'Type or select a uom. If a uom is selected then a conversion from metric to imperial or vice versa is displayed next to the field value. If a custom uom is typed in then that uom will be displayed next to the field.'
- Display width:** A text input field containing the value 50. A note states: 'The maximum number of characters that will be displayed at one time.'
- Visibility:** A dropdown menu set to 'Always'. A note states: 'Determines when users will be able to view this field. Always means it will be displayed while creating, editing or viewing an item. Edit only means it will be visible during creating or editing an item.'
- Editable:** A dropdown menu set to 'True'. A note states: 'Determines if users will be able to edit this field. If false, the content is treated as HTML, rather than text; please ensure the content is safe.'

Ensure All the Necessary Data is Gathered that is Required to Make a Decision





Home > d2m3 - New Idea +

My Default View (11) [Filter Icon] [List Icon]

Item Descriptor ↓	Idea Description	Qualification Value Glyph	Current State	Date Raised
NIS000011	Twin Selectable Pump	Group B	Kick Off Product Development	01/06/2018
NIS000010	Great idea for a new <b>drill</b>	Group C	Kick Off Product Development	30/05/2018
NIS000009	I have another <b>GREAT</b> idea!	Group B	Draft	18/04/2018
NIS000008	I have another <b>GREAT</b> idea!	Group B	Draft	18/04/2018
NIS000007	I have another <b>GREAT</b> idea!	Group B	Draft	18/03/2018
NIS000006	I have another <b>GREAT</b> idea!	Group B	Draft	18/04/2018
NIS000005	New Air Blower concept....	Group C	Idea Review	30/05/2018
NIS000004	New Air Blower concept....	Not Qualified	Kick Off Product Development	13/04/2018
NIS000003	We could make this much better!!!!	Group A	Kick Off Product Development	24/05/2018
NIS000002	I have another <b>GREAT</b> idea!	Group B	Kick Off Product Development	18/05/2018
NIS000001	I have a <b>GREAT</b> idea!	Group B	Kick Off Product Development	25/04/2018



Admin (6 of 6) ⓘ



# Collaboration

## Automated Notifications and To Do List

Use either Predetermined or Dynamic Selected Distribution Lists

Send for Review, Action or for Information

Configurable Email Notifications

Home Page “My Outstanding Work”



Mail - Eddie Engineer - Outlook - Google Chrome  
https://outlook.live.com/mail/deeplink

Delete Spam Block ...

NIS000013 - Send for Review

Autodesk Fusion Lifecycle (no reply) <noreply@autodesk.com>  
Mon 04/06/2018, 14:03  
You:

**Workflow Notification**

Eddie, a Workflow Action, **Send for Review**, has been performed in **d2m3 - New Idea** by **Simon Eaves (Simon@D2M3)**

Currently the following Workflow Actions are available to Eddie Engineer:

- [Idea Accepted](#)
- [Cancel](#)
- [Reset](#)

[View Item Details for NIS000013](#)

Item Summary	
Related Product	
Idea Description	New Mid Size Twin Selectable Pump

Workflow Summary	
Workspace:	d2m3 - New Idea
Item:	NIS000013
Current State:	Idea Review
Last Action:	Send for Review
Performed By:	Simon Eaves (Simon@D2M3)

Step	Date Time	Action	Performed By	Comments
4	04/06/2018	Send for Review	Simon Eaves (Simon@D2M3)	
3	04/06/2018	Reset	Simon Eaves (Simon@D2M3)	
2	04/06/2018	Send for Review	Simon Eaves (Simon@D2M3)	
1	04/06/2018	Initiated	Simon Eaves (Simon@D2M3)	

You can change your notification settings by clicking **My Profile** from the home page and selecting **Manage Electronic Notifications**.



Admin (6 of 6) ⓘ



NIS000013 - Send for Review

AL Autodesk Fusion Lifecycle (no reply) <noreply@autodesk.com>  
Mon 04/06/2018, 14:03  
You; ✓

Workflow Notification

Eddie, a Workflow Action, **Send for Review**, has been performed in **d2m3 - New Idea** by **Simon Eaves (Simon@D2M3)**

Currently the following Workflow Actions are available:

- [Idea Accepted](#)
- [Cancel](#)
- [Reset](#)

[View Item Details for NIS000013](#)

Item Summary	
Related Product	
Idea Description	New Mid Size Twin Selectable Pump
Workflow Summary	
Workspace:	d2m3 - New Idea
Item:	NIS000013
Current State:	Idea Review
Last Action:	Send for Review
Performed By:	Simon Eaves (Simon@D2M3)

Step	Date Time	Action
4	04/06/2018	Send for Review
3	04/06/2018	Reset
2	04/06/2018	Send for Review
1	04/06/2018	Initiated

You can change your notification settings by clicking **My Profile** for **Notifications**.



# Eddie Engineer

## My Outstanding Work

	Due Date	Item Name	Workspace	State	State Set ...	State Set ...
		NIS000013	d2m3 - New Idea	Idea Revi...	04/06/2018	Simon Eav...
		NIS000005	d2m3 - New Idea	Idea Revi...	30/05/2018	Simon Eav...
		TL000005 - carters	Autodesk - Calibr...	[02] In-Se...	14/02/2018	keith ball
		TL000003 - BENCH MARPOSS	Autodesk - Calibr...	[02] In-Se...	14/02/2018	Jay Shinh
		TL000004 - Micrometer	Autodesk - Calibr...	[01] Out-...	14/02/2018	keith ball
		TL000001 - Coffee Machine	Autodesk - Calibr...	[02] In-Se...	03/10/2017	Simon Eav...
		CR000015 - TEST	Autodesk - Chang...	Create	13/06/2016	Eddie Eng...
		CR000014 - TEST	Autodesk - Chang...	Create	13/06/2016	Eddie Eng...
		CR000013 - Stepper Driver PCB Failure	Autodesk - Chang...	Create	13/06/2016	Eddie Eng...



Dashboard - Fusion Lifecycle

Mail - Eddie Engineer

Secure | https://d2m3eaves.autodesklplm360.net/plm/mainDashboard

Autodesk FUSION

Lifecycle

Charts

My Outstanding Work

My Bookmarks

Due Date

Item Name

Workspace

State

State Set On

State Set By

NIS000013

d2m3 - New Idea

Idea Review

04/06/2018

Simon Eaves

NIS000005

d2m3 - New Idea

Idea Review

30/05/2018

Simon Eaves

TL000005 - carters

Autodesk - Calibration

[02] In-Service

14/02/2018

keith ball

TL000003 - BENCH MARPOSS

Autodesk - Calibration

[02] In-Service

14/02/2018

Jay Shinh

TL000004 - Micrometer

Autodesk - Calibration

[01] Out-Of-Service

14/02/2018

keith ball

TL000001 - Coffee Machine

Autodesk - Calibration

[02] In-Service

03/10/2017

Simon Eaves

CR000015 - TEST

Autodesk - Change Request

Create

13/06/2016

Eddie Engineer

CR000014 - TEST

Autodesk - Change Request

Create

13/06/2016

Eddie Engineer

CR000013 - Stepper Driver PCB Failure

Autodesk - Change Request

Create

13/06/2016

Eddie Engineer

Item Name

Workspace

Comment

© Copyright 2018 Autodesk, Inc. All rights reserved. Privacy Terms and Conditions



Item Details      Workflow Actions      Attachments

Edit

Workspace Banner New Idea

Workspace Description	Within this workspace items can be used to log new product ideas for a feasibility analysis and approval.
-----------------------	---

Product Range	Miscellaneous
---------------	---------------

Qualification Value	Group B
1	1
2	2
3	3
4	4
5	5
6	6
7	7
8	8
9	9
10	10
11	11
12	12
13	13
14	14
15	15
16	16
17	17
18	18
19	19
20	20
21	21
22	22
23	23
24	24
25	25
26	26
27	27
28	28
29	29
30	30
31	31
32	32
33	33
34	34
35	35
36	36
37	37
38	38
39	39
40	40
41	41
42	42
43	43
44	44
45	45
46	46
47	47
48	48
49	49
50	50
51	51
52	52
53	53
54	54
55	55
56	56
57	57
58	58
59	59
60	60
61	61
62	62
63	63
64	64
65	65
66	66
67	67
68	68
69	69
70	70
71	71
72	72
73	73
74	74
75	75
76	76
77	77
78	78
79	79
80	80
81	81
82	82
83	83
84	84
85	85
86	86
87	87
88	88
89	89
90	90
91	91
92	92
93	93
94	94
95	95
96	96
97	97
98	98
99	99
100	100

Competitor Location	Braininatt

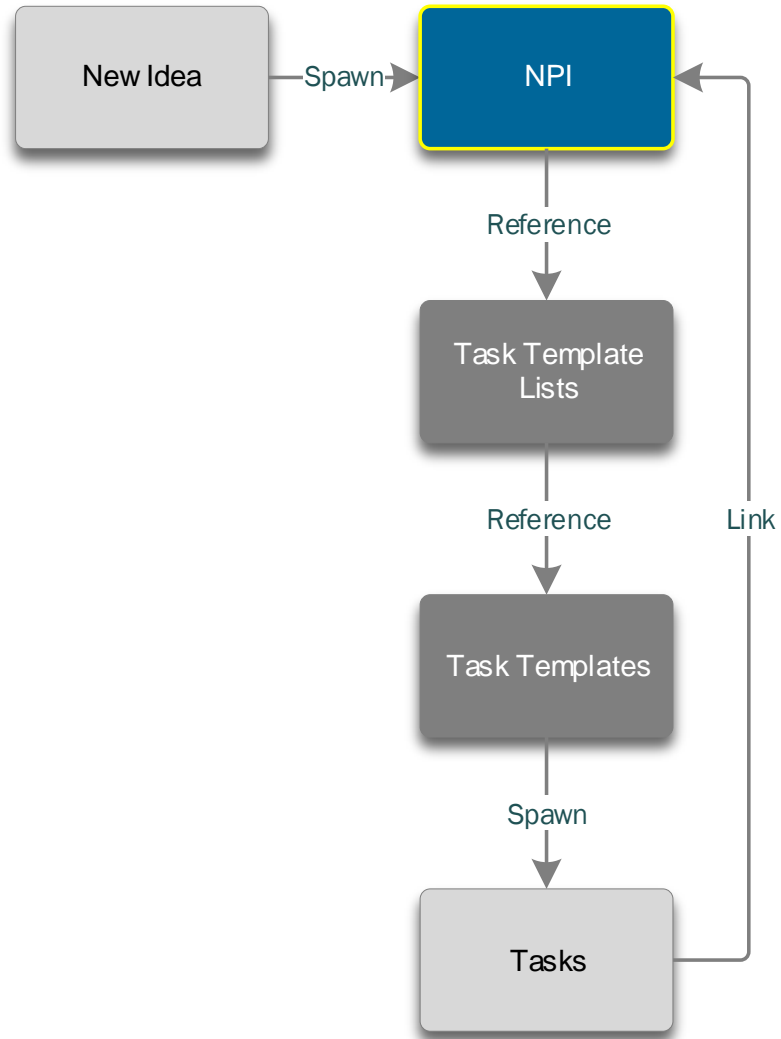








# NPI Process – NPI Phase





Home > d2m3 - NPI

NPI000011

Star

More

Up

Down

Fullscreen

Close

New Workflow Actions Available

- Item Details
- Attachments
- NPI Workflow
- Milestones
- Project Task Plan

Edit

Workspace Notes (1 of 7)

Workspace Banner

Items & BOMs

Workspace Description

Within this workspace items detail Product Related Item & BOM data.

General Properties (2 of 7)

ID

NPI000011

Created from this Idea

NIS000013

Description

New Mid Size  
Twin Selectable Pump

Product Range

Miscellaneous

Related Product

Project Baseline (3 of 7)

	Point	Date
Project Baseline		

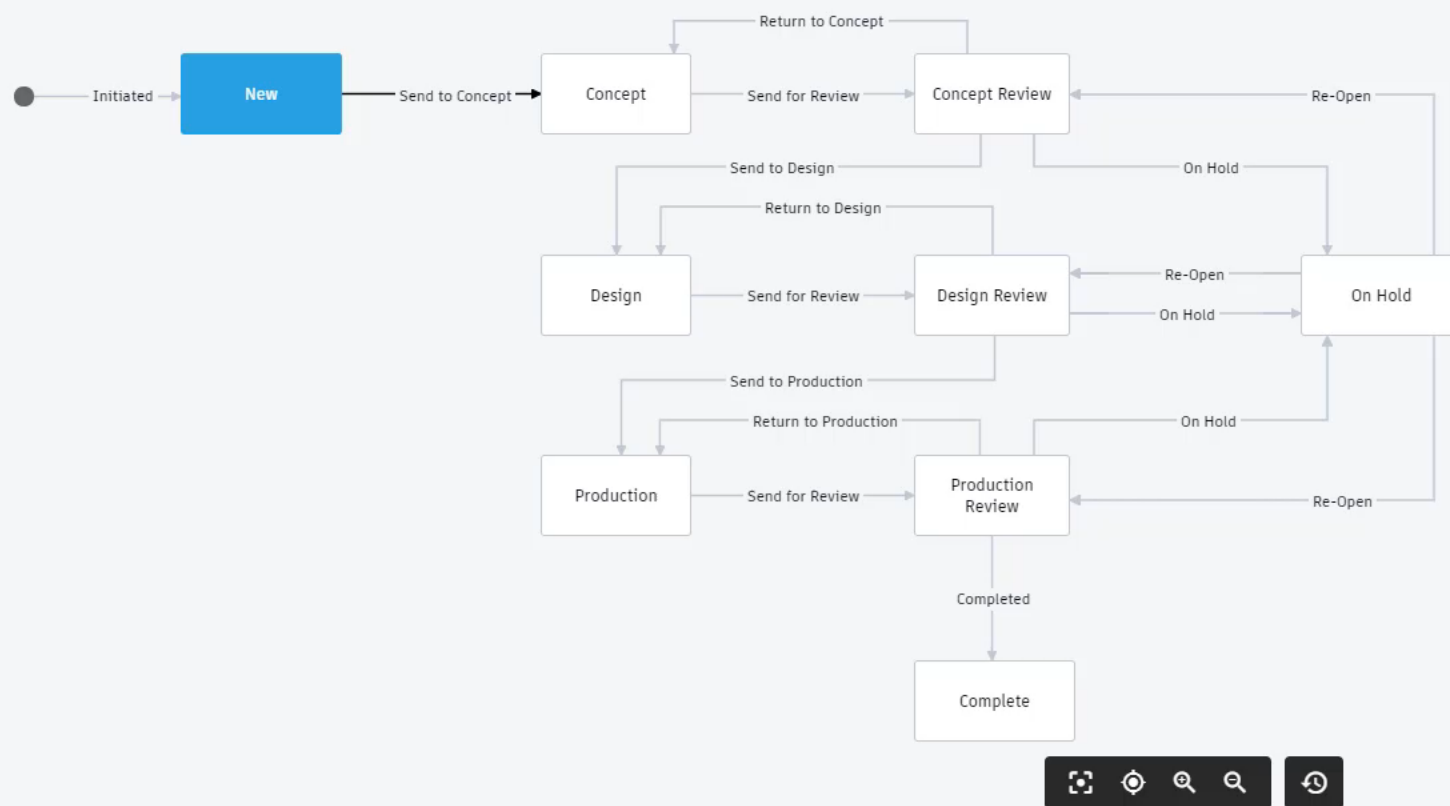
Stage Properties (4 of 7)

Stage Task Durations (5 of 7)

Stage Approval Team Members (6 of 7)

Admin (7 of 7)







Edit

Workspace Notes (1 of 7)

Workspace Banner

Items & BOMs

Workspace Description

Within this workspace items detail Product Related Item & BOM data.

General Properties (2 of 7)

ID

NPI000011

Created from this Idea

NIS000013

Description

New Mid Size  
Twin Selectable Pump

Product Range

Miscellaneous

Related Product

Project Baseline (3 of 7)

	Point	Date
Project Baseline	Start	05/06/2018

Stage Properties (4 of 7)

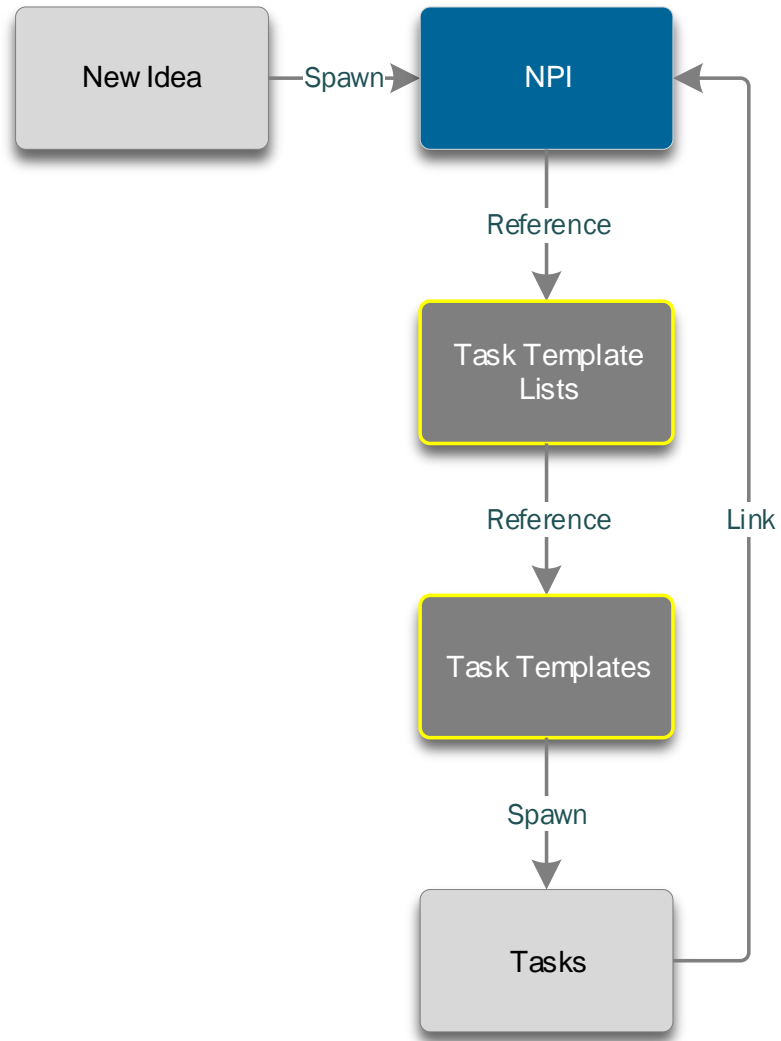
Stage Task Durations (5 of 7)

Stage Approval Team Members (6 of 7)

Admin (7 of 7)



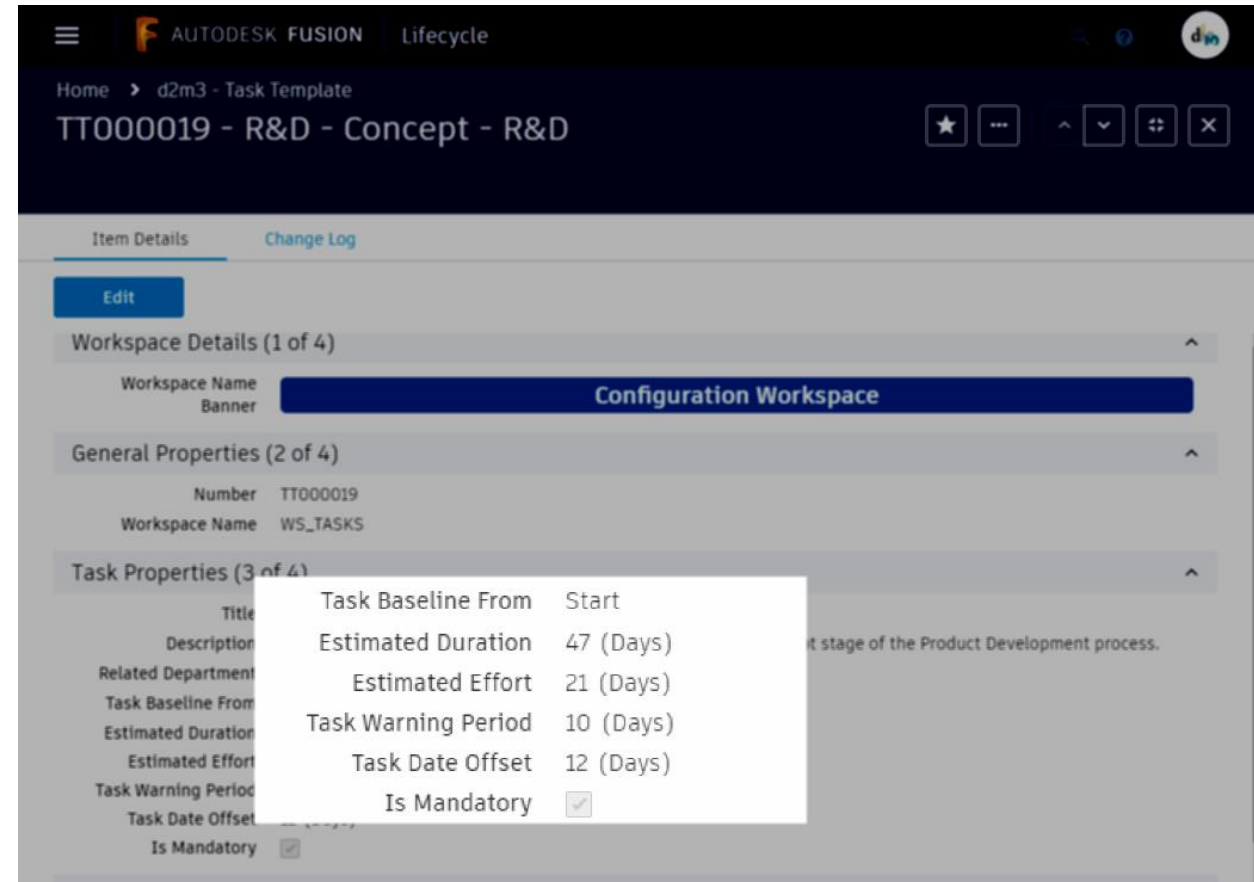
# NPI Process – Task Templates





# Task Templates

- Define the details of a particular task to be carried out.
- Pre-Configure Responsible Department/People
- Specify Estimated Duration & Effort
- Can be Mandatory
- Define Actions Required to Complete Task





# Task Template Lists

- A Collection of Task Templates
- That Define the Tasks Required to Complete an NPI Stage
- Create as Many As You Require
- Calculate Overall Duration and Effort
- Applies that to the Associated NPI to Calculate Stage Durations

	Related Workflow State	Include In Ca...	Task Template
<input type="checkbox"/>	Concept	<input checked="" type="checkbox"/>	TT000012 - Product Manager - Concept - Product Managers
<input type="checkbox"/>	Concept	<input checked="" type="checkbox"/>	TT000023 - Marketing - Concept - Marketing
<input type="checkbox"/>	Concept	<input checked="" type="checkbox"/>	TT000019 - R&D - Concept - R&D
<input type="checkbox"/>	Concept	<input checked="" type="checkbox"/>	TT000010 - QHSE - Concept - Quality
<input type="checkbox"/>	Concept	<input checked="" type="checkbox"/>	TT000009 - Operations - Concept - Operations





NPI000011

New Workflow Actions Available

### Item Details

### Attachments

## NPI Workflow

## Milestones

## Project Task Plan

Edit

Description	Twin Selectable Pump
-------------	----------------------

Product Range      Miscellaneous

### Related Product

Project Baseline (3 of 7) ⓘ

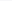
	Point	Date
Project Baseline	Start	05/06/2018

Stage Properties (4 of 7) ⓘ

	Stage Task Templates	Stage Approval Team
Gate 1 - Concept	TTM000061 - NPI - Concept Tasks for Industrial Products	NPI Industrial Products Concept Approval Board
Gate 2 - Design	TTM000060 - NPI - Design Tasks for Industrial Products	NPI Industrial Products Design Approval Board
Gate 3 - Production	TTM000059 - NPI - Production Tasks	NPI Production Approval Board

### Stage Task Durations (5 of 7)

	Duration		Required Effort	Calculated Start Date	Calculated Completion Date	Required By	Date Differential
Gate 1 - Concept	59	8.43	37	05/06/2018	03/08/2018		
Gate 2 - Design	140	20.00	55	03/08/2018	21/12/2018		
Gate 3 - Production	77	11.00	70	21/12/2018	08/03/2019		
Total	276 (Days)	39.43 (Weeks)	162 (Days)				

Stage Approval Team Members (6 of 7) 

Admin (7 of 7) 



Edit


Description	Twin Selectable Pump
-------------	----------------------

Product Range	Miscellaneous
---------------	---------------

### Related Product

Project Baseline (3 of 7) Stage Properties (4 of 7) ⓘ

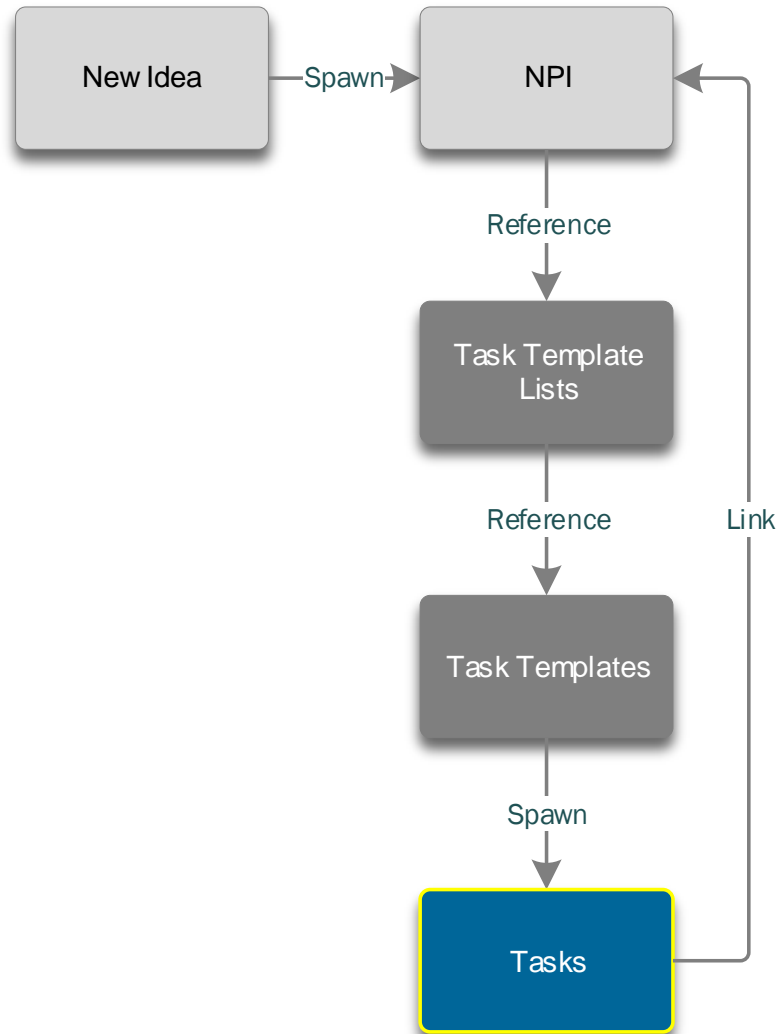
### Stage Task Durations (5 of 7)

Stage Approval Team Members (6 of 7) 

Admin (7 of 7) ⓘ



# NPI Process – Tasks





# Tasks

- Emailed Notification of Task Allocation
- Define the details of a particular task to be carried out.
- Are Pre-Configure to be Assigned to a Responsible Department/People
- Show an Estimated Duration & Effort
- Can be Mandatory
- Show the Actions Required to Complete Task
- % Complete Calculated from How Many Actions Have Been Completed.
- Associated to the Parent NPI via a Template or Manually



The screenshot displays the Autodesk Fusion Lifecycle web interface. At the top, the navigation bar includes the Autodesk Fusion logo, the word 'Lifecycle', and a search icon. Below this, the breadcrumb trail shows 'Home &gt; d2m3 - Tasks (Resource)'. The main header area displays the task ID 'TK000008 - Concept - Product Mana...' with a star icon, a print icon, a menu icon, and a close icon. A 'Locked' status indicator is shown on the left, and a 'Closed' status indicator with a location pin icon is on the right. A message 'No Workflow Actions Available' is displayed. The interface has several tabs: 'Details', 'Attachments', 'Workflow Diagram', 'Milestones', and 'More'. The 'Details' tab is active, showing an 'Edit' button. The 'Workspace Details (1 of 8)' section includes 'Workspace Name' (Task Workspace) and 'Workspace Description' (The task workspace allows for the creation and allocation of tasks to individuals and groups). The 'Summary (2 of 8)' section lists 'Task ID' (TK000008), 'Title' (Product Manager - Concept), 'Description' (Tasks identified for the Product Manager to carry out as part of the concept stage of the Product Development process.), 'Related Workflow State' (Concept), and 'Is Mandatory' (checkbox). The 'Task Progress' section shows a progress bar, 'Current State' (Closed), and 'Start Date' (05/06/2018). The 'Task Assignment (3 of 8)' section lists 'Related Department' (Product Managers), 'Related Department Members List' (Burns, Adrian, Eaves, Simon), and 'Related Department Description'. The 'Task Actions (4 of 8)' and 'Milestone Overview (5 of 8)' sections are also visible.



Home > d2m3 - NPI  
NPI000011

Concept 

Workflow Actions Available

Item Details | Attachments | NPI Workflow | Milestones | Project Task Plan

Edit

Add

Remove

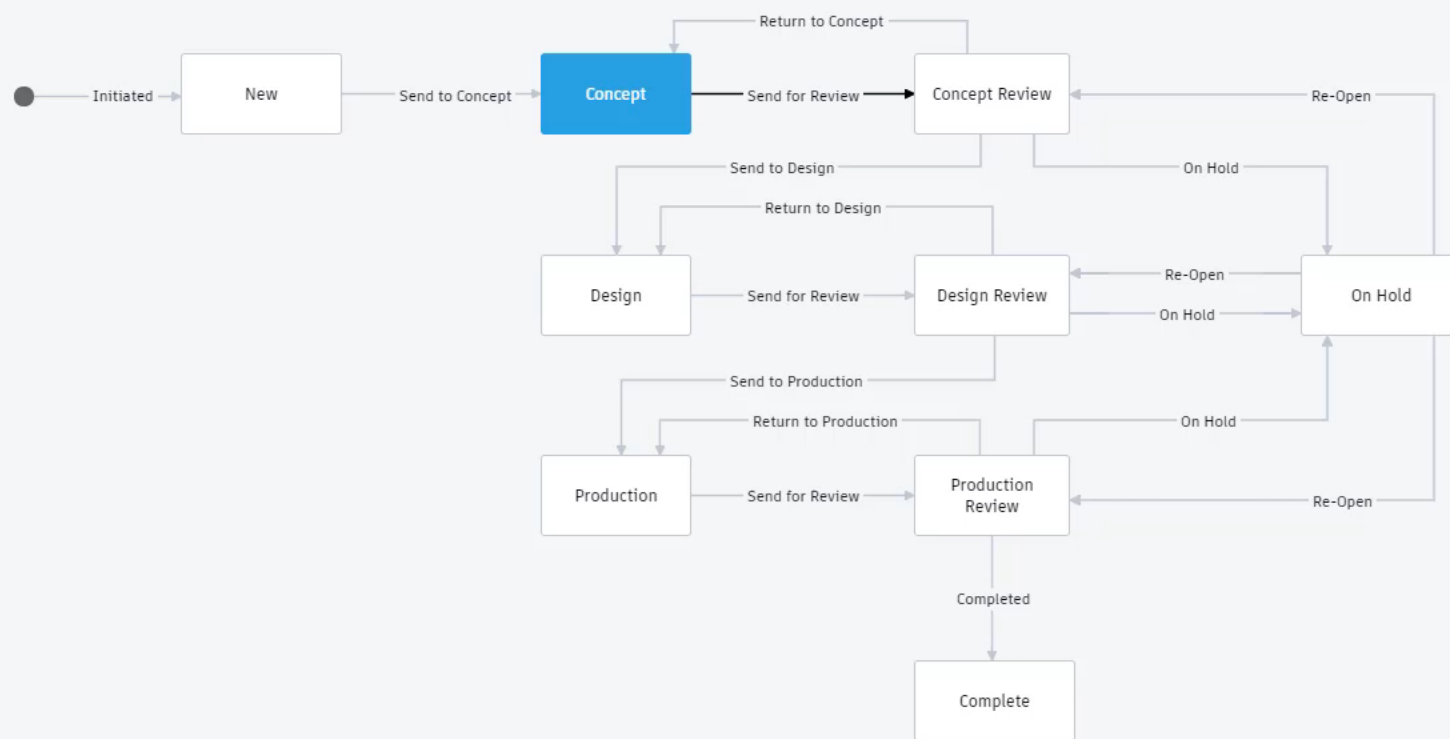
Gantt Chart:

Time Scale: 

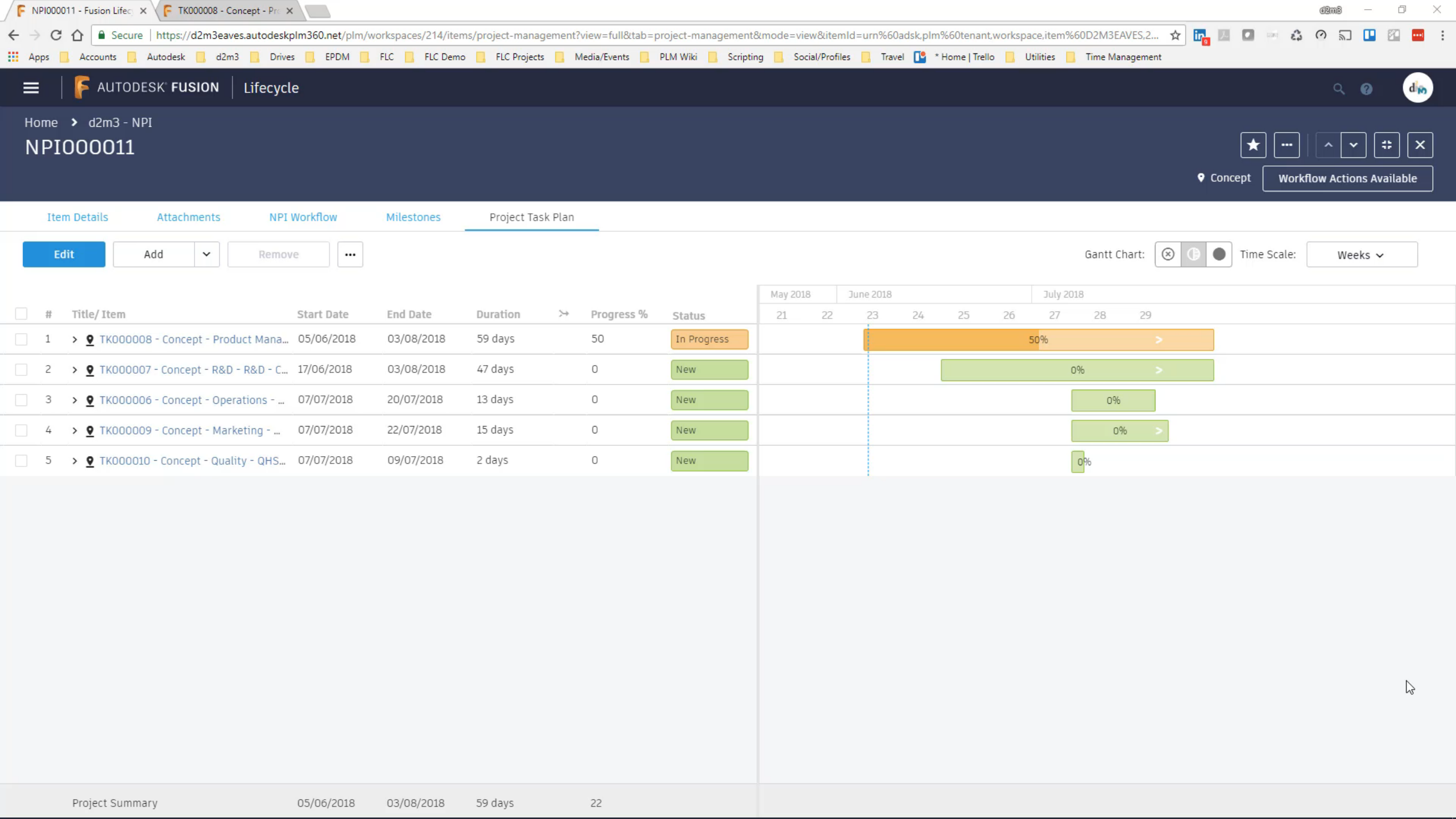
Weeks

	#	Title/ Item	Start Date	End Date	Duration		Progress %	Status	May 2018June 2018July 2018								
									21	22	23	24	25	26	27	28	29
<input type="checkbox"/>	1	>  TK000008 - Concept - Product Mana...	05/06/2018	03/08/2018	59 days		0	New									
<input type="checkbox"/>	2	>  TK000007 - Concept - R&D - R&D - C...	17/06/2018	03/08/2018	47 days		0	New									
<input type="checkbox"/>	3	>  TK000006 - Concept - Operations - ...	07/07/2018	20/07/2018	13 days		0	New									
<input type="checkbox"/>	4	>  TK000009 - Concept - Marketing - ...	07/07/2018	22/07/2018	15 days		0	New									
<input type="checkbox"/>	5	>  TK000010 - Concept - Quality - QHS...	07/07/2018	09/07/2018	2 days		0	New									



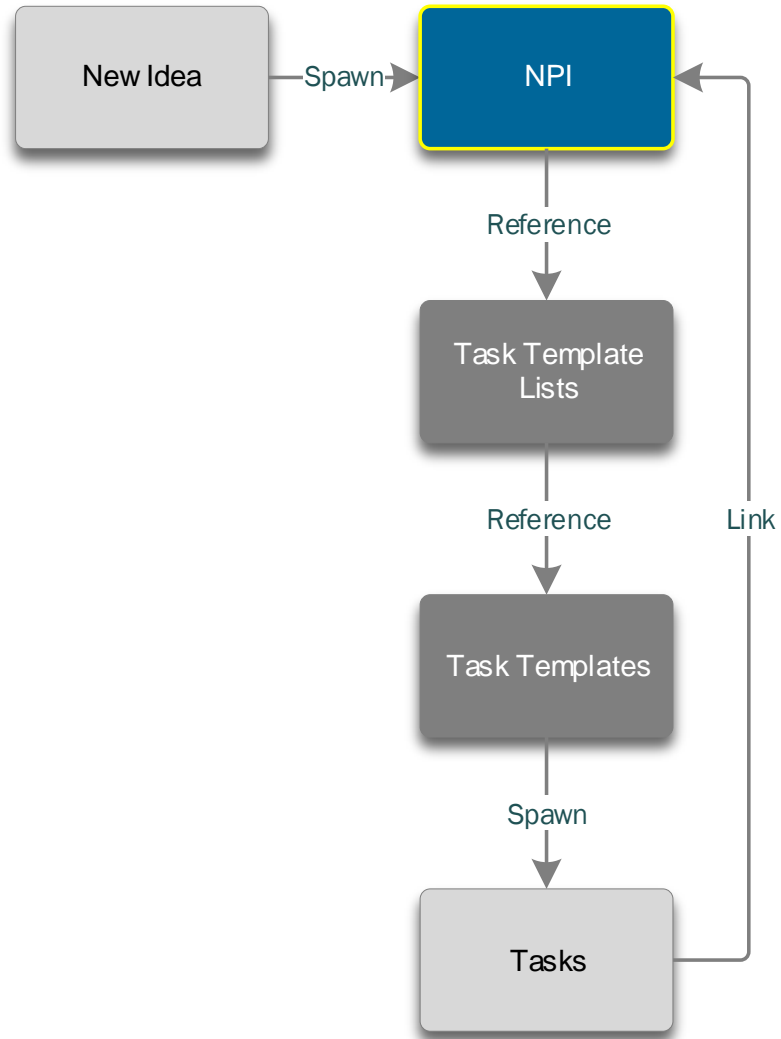








# NPI Process – NPI Phase (Part 2)





# Dynamic Approval Groups

- Pre-Configured Approval Groups
- Plus Adhoc Approvers
- Approval Types
  - One from Many
  - Multiple from Many
  - All
- Automatic Notifications
- My Outstanding Work



Stage Approval Team Members (6 of 7) <span>i</span>				
	Predefined Approvers	Adhoc Approvers	Combined Approval List	Approved By
Gate 1 - Concept	Eaves, Simon Engineer, Eddie Poulton, Nathan		Eaves, Simon Engineer, Eddie Poulton, Nathan	
Gate 2 - Design	Burns, Adrian Eaves, Simon Engineer, Eddie		Burns, Adrian Eaves, Simon Engineer, Eddie	
Gate 3 - Production	Eaves, Simon		Eaves, Simon	



Home > d2m3 - NPI  
NPI000011

Concept

Workflow Actions Available

Item Details | Attachments | NPI Workflow | Milestones | Project Task Plan

Edit

Add

Remove

Gantt Chart:

Time Scale: Weeks

	#	Title/ Item	Start Date	End Date	Duration		Progress %	Status	May 2018June 2018July 2018								
									21	22	23	24	25	26	27	28	29
<input type="checkbox"/>	1	>  TK000008 - Concept - Product Mana...	05/06/2018	03/08/2018	59 days		50	In Progress							50%		>
<input type="checkbox"/>	2	>  TK000007 - Concept - R&D - R&D - C...	17/06/2018	03/08/2018	47 days		100	Closed							100%		>
<input type="checkbox"/>	3	>  TK000006 - Concept - Operations - ...	07/07/2018	20/07/2018	13 days		0	New							0%		
<input type="checkbox"/>	4	>  TK000009 - Concept - Marketing - ...	07/07/2018	22/07/2018	15 days		0	New							0%		>
<input type="checkbox"/>	5	>  TK000010 - Concept - Quality - QHS...	07/07/2018	09/07/2018	2 days		0	New							0%		

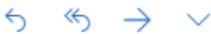








Autodesk Fusion Lifecycle (no reply) <noreply@autodesk.com>



Tue 05/06/2018, 15:19  
You; ▾

## Workflow Notification

Eddie, a Workflow Action, **Send for Review**, has been performed in **d2m3 - NPI** by **Simon Eaves**

Currently the following Workflow Actions are available to Eddie Engineer:

- [Send to Design](#)
- [Return to Concept](#)
- [On Hold](#)

[View Item Details for NPI000011](#)

Workflow Summary	
Workspace:	d2m3 - NPI
Item:	NPI000011
Current State:	Concept Review
Last Action:	Send for Review
Performed By:	Simon Eaves (Simon@D2M3)

Step	Date Time	Action	Performed By	Comments
7	05/06/2018	Send for Review	Simon Eaves (Simon@D2M3)	
6	05/06/2018	Return to Concept	Simon Eaves (Simon@D2M3)	
5	05/06/2018	Send for Review	Simon Eaves (Simon@D2M3)	
4	05/06/2018	Return to Concept	Simon Eaves (Simon@D2M3)	
3	05/06/2018	Send for Review	Simon Eaves (Simon@D2M3)	
2	05/06/2018	Send to Concept	Simon Eaves (Simon@D2M3)	
1	05/06/2018	Initiated	Eddie Engineer (eddie@d2m3)	

You can change your notification settings by clicking **My Profile** from the home page and selecting **Manage Electronic Notifications**.



TK000007 - Concept - R&D

Autodesk

d2m3

Drives

EPDM

FLC

FLC Demo

FLC Projects

Media/Events

PLM Wiki

Scripting

Social/Profiles

Travel

\* Home | Trello

Utilities

Time Management

AUTODESK FUSION

Lifecycle

Home > d2m3 - NPI

NPI000011

☆

⋮

⬆

⬇

⛶

✕

Concept Review

Workflow Actions Available

Item Details

Attachments

NPI Workflow

Milestones

Project Task Plan

Edit

Product Range

Miscellaneous

Related Product

Project Baseline (3 of 7)

ⓘ

⌵

	Point	Date
Project Baseline	Start	05/06/2018

Stage Properties (4 of 7)

ⓘ

⌵

	Stage Task Templates	Stage Approval Team
Gate 1 - Concept	TTM000061 - NPI - Concept Tasks for Industrial Products	NPI Industrial Products Concept Approval Board
Gate 2 - Design	TTM000060 - NPI - Design Tasks for Industrial Products	NPI Industrial Products Design Approval Board
Gate 3 - Production	TTM000059 - NPI - Production Tasks	NPI Production Approval Board

Stage Task Durations (5 of 7)

ⓘ

⌵

Stage Approval Team Members (6 of 7)

ⓘ

⌵

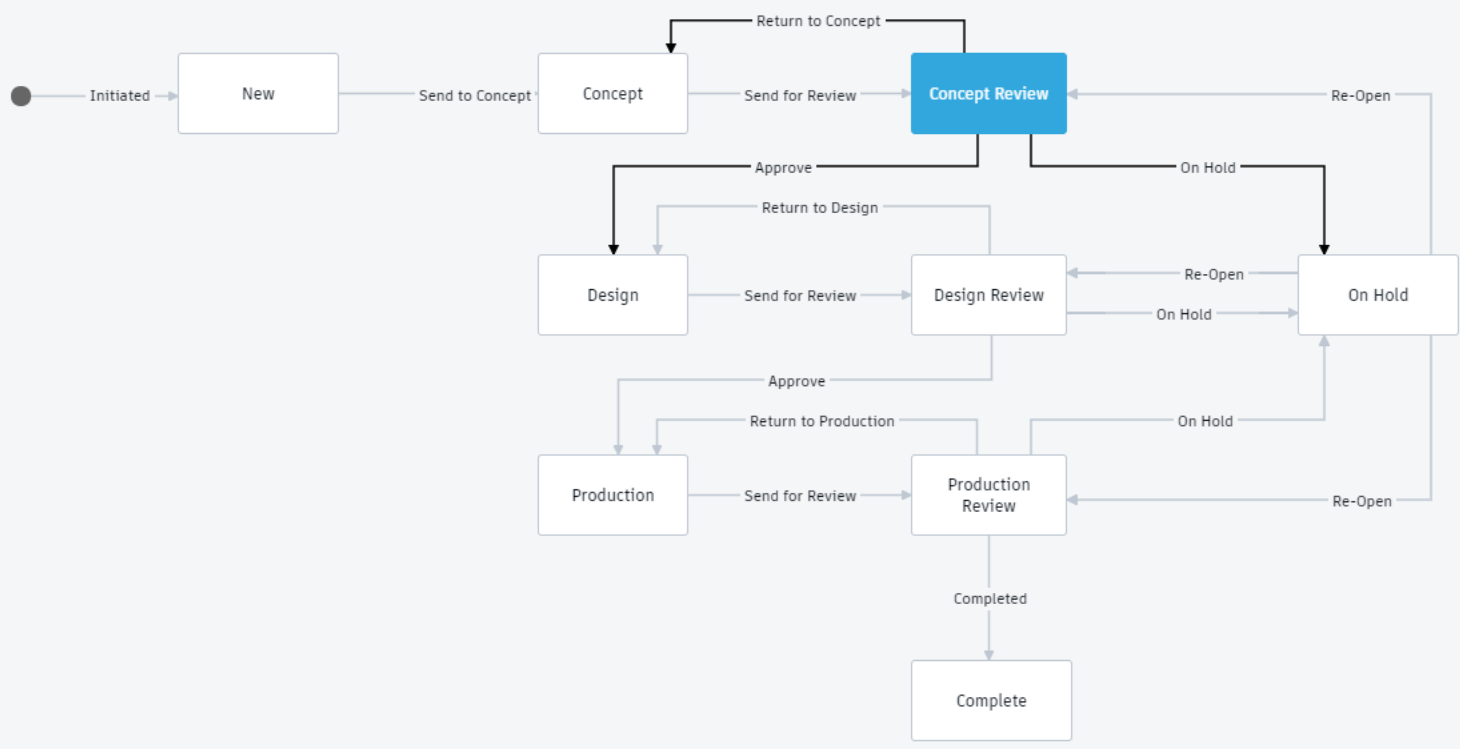
	Predefined Approvers	Adhoc Approvers	Combined Approval List	Approved By
Gate 1 - Concept	Engineer, Eddie		Engineer, Eddie	Eaves, Simon Poulton, Nathan
Gate 2 - Design	Burns, Adrian Eaves, Simon Engineer, Eddie		Burns, Adrian Eaves, Simon Engineer, Eddie	
Gate 3 - Production	Eaves, Simon		Eaves, Simon	

Admin (7 of 7)

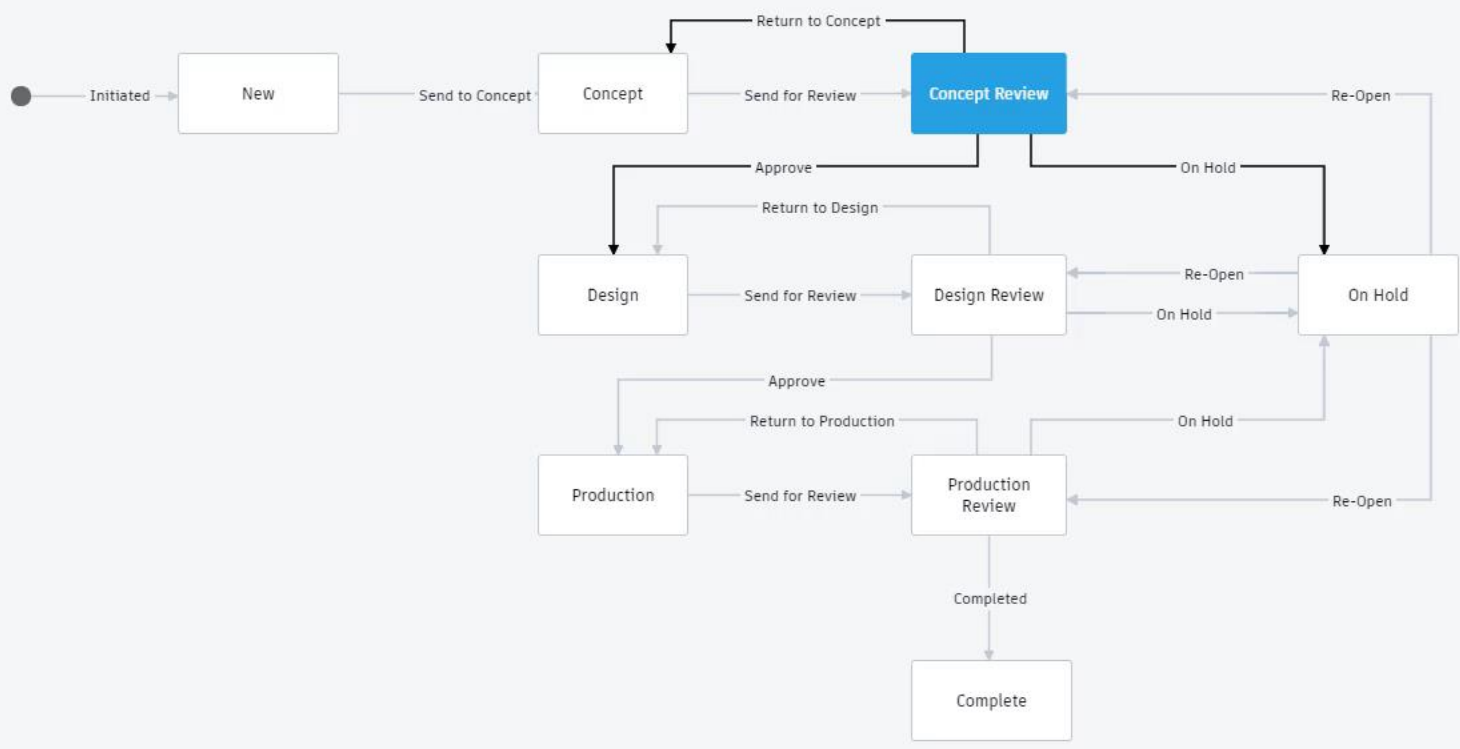
ⓘ

⌵





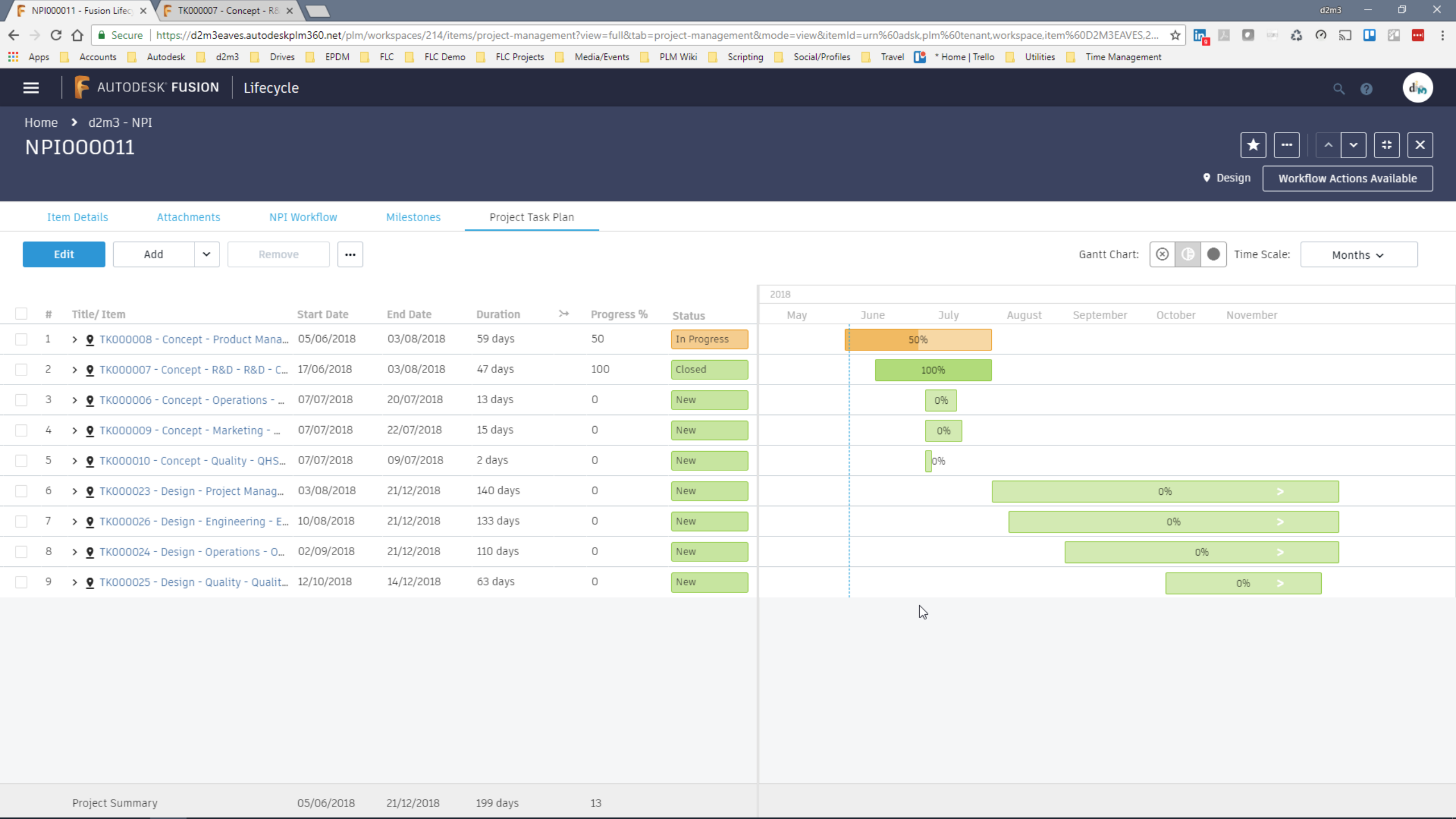










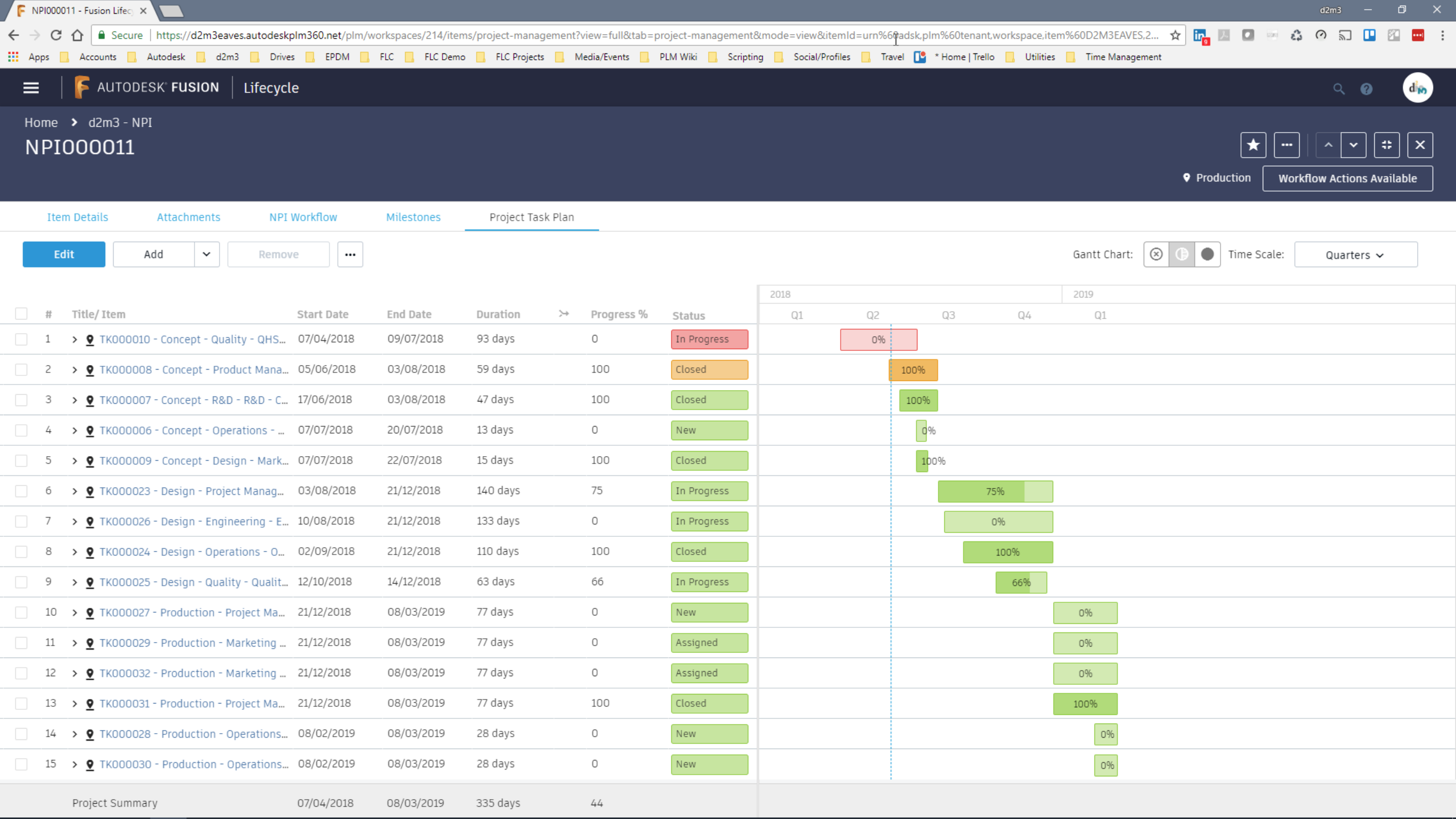




# Fast Forwarding...









Workspace Notes (1 of 7)

Workspace Banner

Items & BOMs

Workspace Description

Within this workspace items detail Product Related Item & BOM data.

General Properties (2 of 7)

ID

NPI000011

Created from this Idea

NIS000013

Description

New Mid Size

Description

Twin Selectable Pump

Product Range

Miscellaneous

Related Product

Middle East Open Skid Mounted PU - 5 Bar PU, Twin Selectable Pump, Dry Run Protection [REV:A]

Project Baseline (3 of 7)

	Point	Date
Project Baseline	Start	05/06/2018

Stage Properties (4 of 7)

Stage Task Durations (5 of 7)

Stage Approval Team Members (6 of 7)

Admin (7 of 7)



Item Number/SKU	Middle East Open Skid Mounted PU
Product Range	
Description	5 Bar PU, Twin Selectable Pump, Dry Run Protection
Unit of Measure	Each
Material	
ERP Part Number	

Item Cost Source	
Total Cost of Item	
BOM Rollup Cost	0.00 (£)
Supplier Cost	0.00 (£)
Manufacturing Cost	

	Name	Part Number	Cost (£)	Preferred
Supplier 1				
Supplier 2				
Supplier 3				
Supplier 4				
Supplier 5				



Details

Attachments

Bill of Materials

Where Used

Related Changes

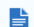




Relationships

Change Log

Upload

Download

...

Name ^	Ver.	Type	Size	Last Updated	Description
<div><div></div><div>Flamco ME Mechanical Datasheet v1.0.docx Title: Flamco ME Mechanical Datasheet - v1.0</div></div>	1	docx	2.1 MB	01/06/2018 by <a href="#">Simon Eaves</a>	
<div><div></div><div>Flamco ME Mechanical Manual - V1.0.docx Title: Flamco ME Mechanical Manual - V1.0</div></div>	1	docx	2.7 MB	01/06/2018 by <a href="#">Simon Eaves</a>	
<div><div></div><div>ME Mechanical HL.iam.dwf Title: ME Mechanical HL.iam</div></div>	1	dwf	4.9 MB	01/06/2018 by <a href="#">Simon Eaves</a>	
<div><div></div><div>ME Mechanical HL.idw.dwf Title: ME Mechanical HL.idw</div></div>	1	dwf	1.2 MB	01/06/2018 by <a href="#">Simon Eaves</a>	
<div><div></div><div>ME Mechanical HL.png Title: ME Mechanical HL</div></div>	1	png	399.8 KB	01/06/2018 by <a href="#">Simon Eaves</a>	















# Other Examples...





PRJ000012 - Test 6 - Fusion

TK000022 - Base BOM - Development

Autodesk FUSION Lifecycle

HomeTasks

TK000022 - Base BOM - Development

☆

🖨

⋮

⬆

⬇

⬆⬇

✕

NewWorkflow Actions Available

Details

Required Resource

Milestones

Approval Workflow

Attachments

Change Log

Relationships

Edit

Workspace Overview (1 of 9)

Workspace NameTasks

Predecessor Tasks (2 of 9)

General Properties (3 of 9)

Task ID

TK000022

Title

Base BOM

Description

Design base BOM

% Complete

0

Is Mandatory

☐

Dates & Durations (4 of 9)

	Start Date	Duration	Due Date
Task	16/09/2017	60 (Days)	15/11/2017
	Estimated	Actual	Differential
Effort	30.00 (Days)		

Calculated Fields (5 of 9)

Number of Weeks

10

Start Week Number

37

Start Week Year

2017

End Week Number

46

End Week Year

2017

Weekly Task Allocation

3.00

Actions (6 of 9)



PRJ000012 - Test 6 - Fusion 360

← → ↺ 🏠

📁 Apps 📁 Accounts 📁 Autodesk 📁 d2m3 📁 Drives 📁 EPDM 📁 FLC 📁 FLC Demo 📁 FLC Projects 📁 Media/Events 📁 PLM Wiki 📁 Scripting 📁 Social/Profiles 📁 Travel 📁 \* Home | Trello 📁 Utilities 📁 Time Management

☰

AUTODESK FUSION

Lifecycle

🔍

?

Home > Projects

PRJ000012 - Test 6

★

⋮

⬆

⬇

⛶

✕

📍 Work in Progress

Workflow Actions Available

Item Details

Workflow Actions

Bill of Materials

Where Used

Relationships

Managed Items

Attachments

Required Resource

Milestones

Change Log

Project Management

Edit

Add

Remove

	Year	Week Number	Date ↓	Related Department	Related Task	Task Workflow Phase	Required Reso...
<input type="checkbox"/>	2017	46	2017-46	FLC Testing Group	TK000022 - Base BOM - Development		3.00
<input type="checkbox"/>	2017	45	2017-45	FLC Testing Group	TK000022 - Base BOM - Development		3.00
<input type="checkbox"/>	2017	44	2017-44	FLC Testing Group	TK000022 - Base BOM - Development		3.00
<input type="checkbox"/>	2017	43	2017-43	FLC Testing Group	TK000022 - Base BOM - Development		3.00
<input type="checkbox"/>	2017	42	2017-42	FLC Testing Group	TK000022 - Base BOM - Development		3.00
<input type="checkbox"/>	2017	41	2017-41	FLC Testing Group	TK000022 - Base BOM - Development		3.00
<input type="checkbox"/>	2017	40	2017-40	FLC Testing Group	TK000022 - Base BOM - Development		3.00
<input type="checkbox"/>	2017	39	2017-39	FLC Testing Group	TK000022 - Base BOM - Development		3.00
<input type="checkbox"/>	2017	38	2017-38	FLC Testing Group	TK000022 - Base BOM - Development		3.00
<input type="checkbox"/>	2017	37	2017-37	FLC Testing Group	TK000022 - Base BOM - Development		3.00
<input type="checkbox"/>	2017	37	2017-37	FLC Testing Group	TK000021 - Carry Our Feasibility Study - Feasibility		1.00
<input type="checkbox"/>	2017	36	2017-36	FLC Testing Group	TK000021 - Carry Our Feasibility Study - Feasibility		1.00

Tasks in Group: 12

Tasks in Group: 12

Total Required Resource: 32.00



# Reporting









# Summary





# Use Autodesk Cloud Technology to Simplify Your New Product Introduction Process.

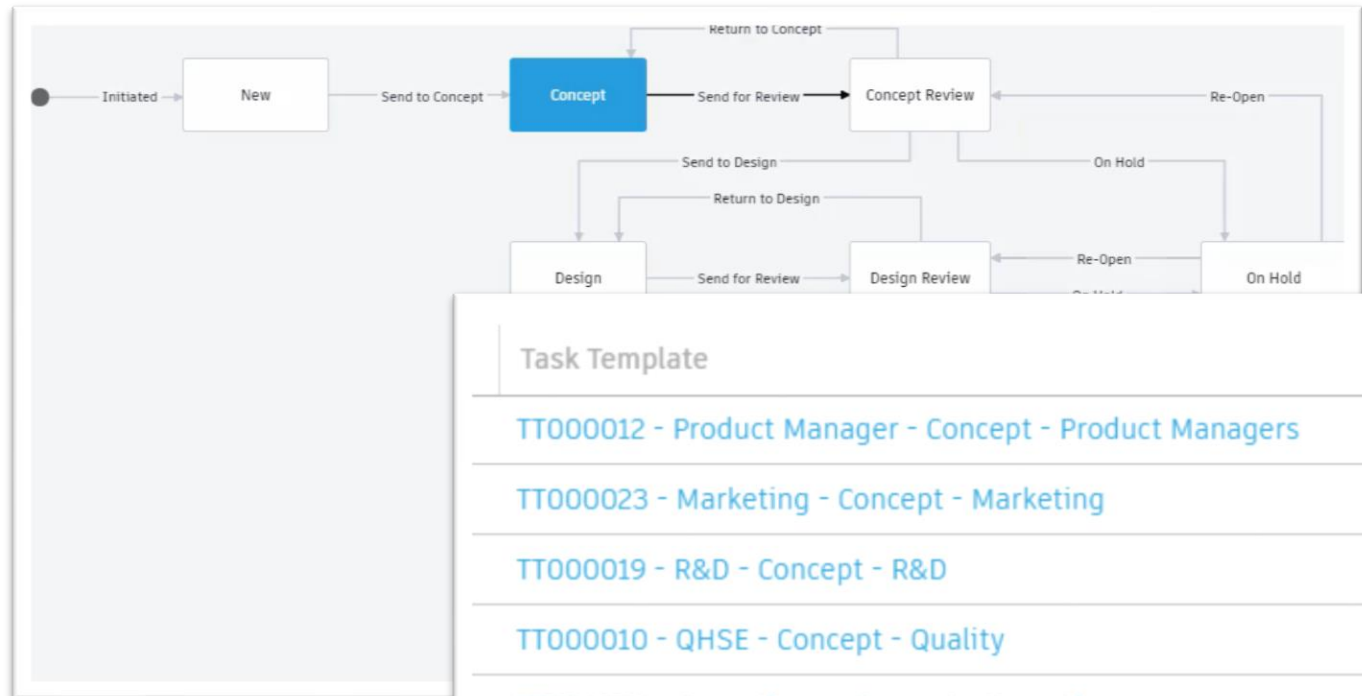
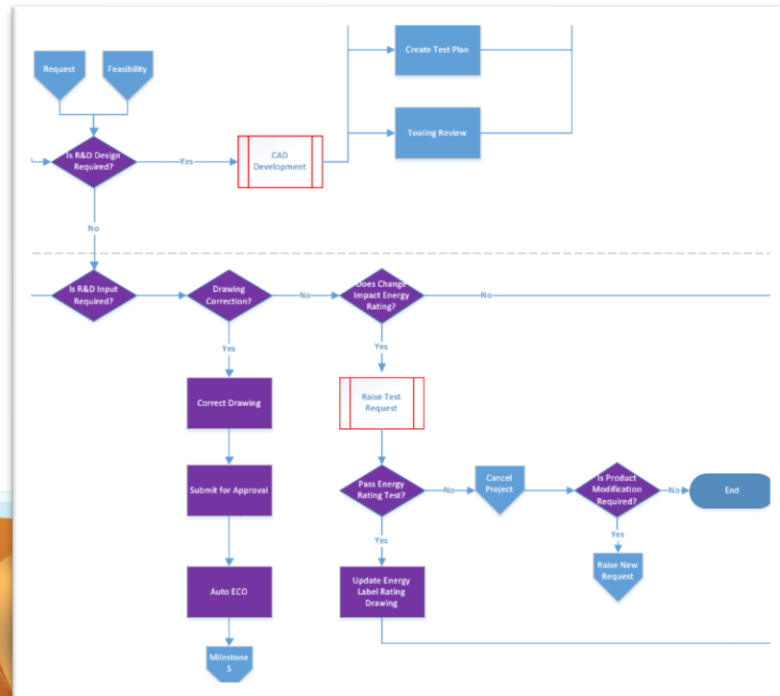
- Attendees of this class have learnt how, through the use of the Autodesk Fusion Lifecycle platform, manufacturing companies are able to accelerate their New Product Introduction process reducing the time to market and, as result, increase commercial opportunities.





# Use Autodesk Cloud Technology to Simplify Your New Product Introduction Process.

See how Fusion Lifecycle can be used to document even the most complex of NPI processes.



## Task Template

TT000012 - Product Manager - Concept - Product Managers

TT000023 - Marketing - Concept - Marketing

TT000019 - R&D - Concept - R&D

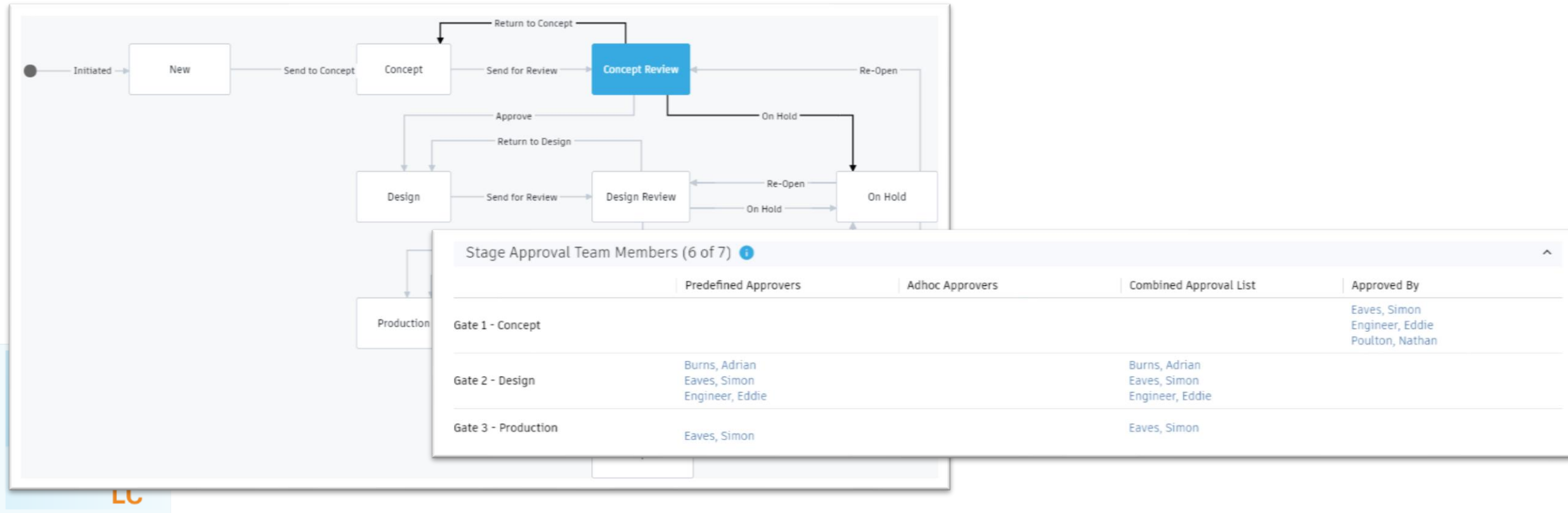
TT000010 - QHSE - Concept - Quality

TT000009 - Operations - Concept - Operations



# Use Autodesk Cloud Technology to Simplify Your New Product Introduction Process.

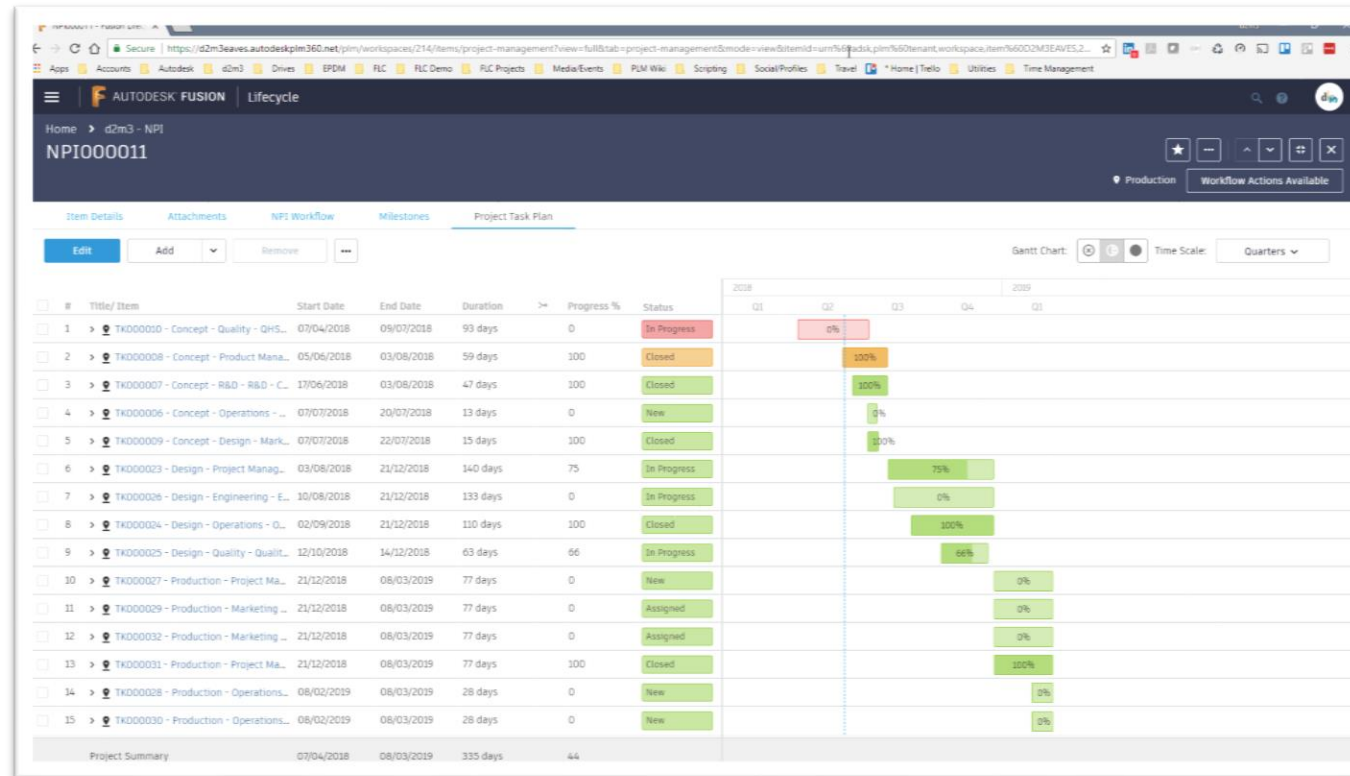
Learn how process workflows can be used to improve collaboration by engaging and organising disparate teams and departments.





# Use Autodesk Cloud Technology to Simplify Your New Product Introduction Process.

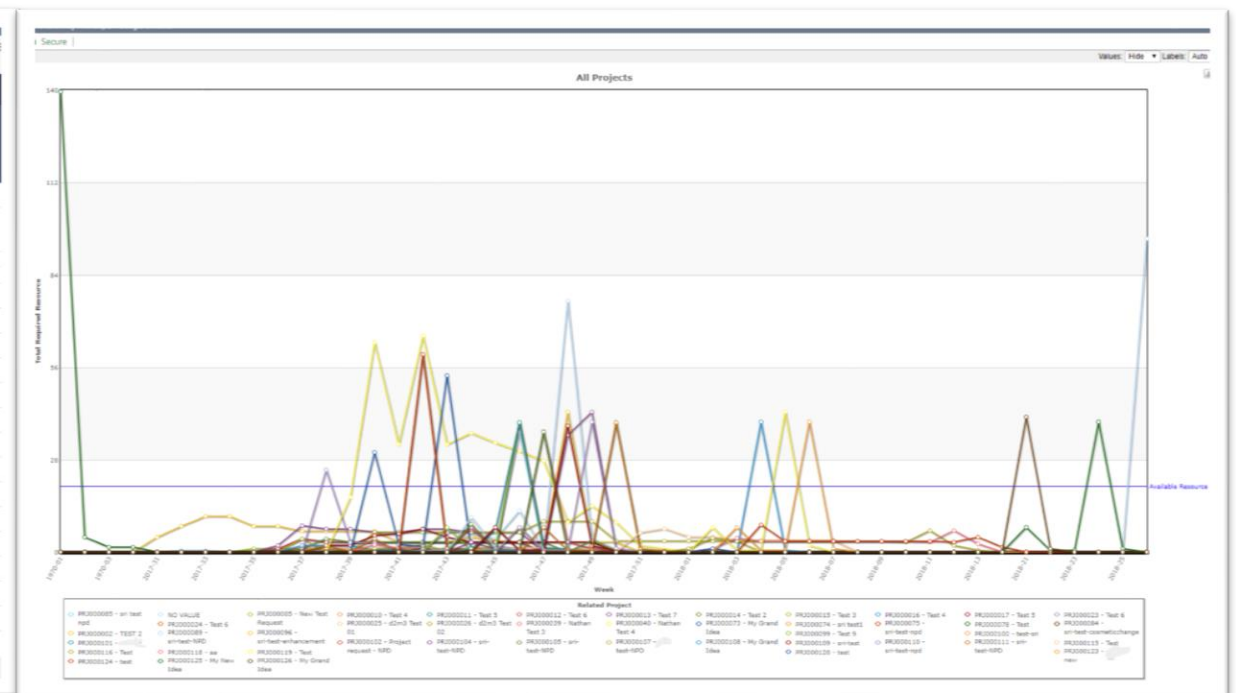
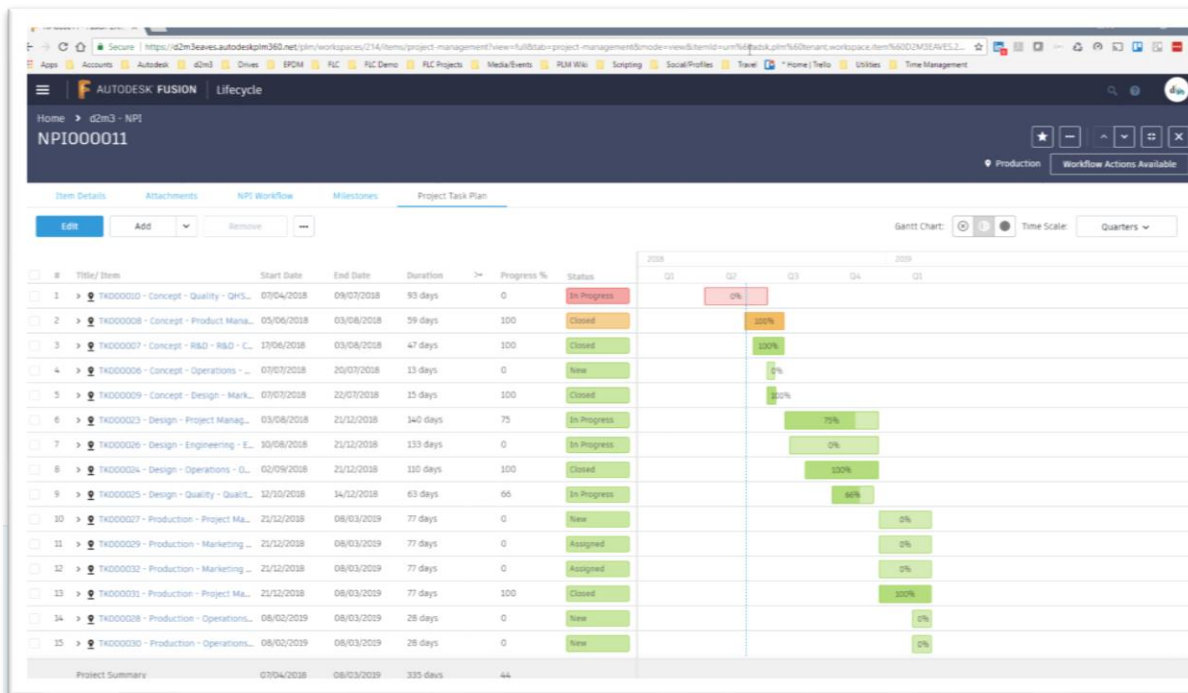
See how tasks can be assigned to an individual or department so that there is a clear accountability for all NPI related actions.





# Use Autodesk Cloud Technology to Simplify Your New Product Introduction Process.

Understand how, having real-time accurate reports, can provide management a high-level view of any given project.





Any Questions?







Autodesk and the Autodesk logo are registered trademarks or trademarks of Autodesk, Inc., and/or its subsidiaries and/or affiliates in the USA and/or other countries. All other brand names, product names, or trademarks belong to their respective holders. Autodesk reserves the right to alter product and services offerings, and specifications and pricing at any time without notice, and is not responsible for typographical or graphical errors that may appear in this document.

© 2018 Autodesk. All rights reserved.

