

Best Practices for Autodesk's Fabrication Software - CS500041

Darren Young

Director of Construction Technology | <https://www.linkedin.com/in/darrenjyoung/>

Speaker Background

Darren Young

Director of Construction Technology / UMC

- 28 Years – Technology & Support
 - 15 Manufacturing of Architectural Products
 - 13 Construction w/Prefabrication Mfg.
- Autodesk University Instructor
 - 15 Years
 - 54 Classes / Labs
- Programming
- Machine Tools
- CAD, CAM, EST, BIM, IT

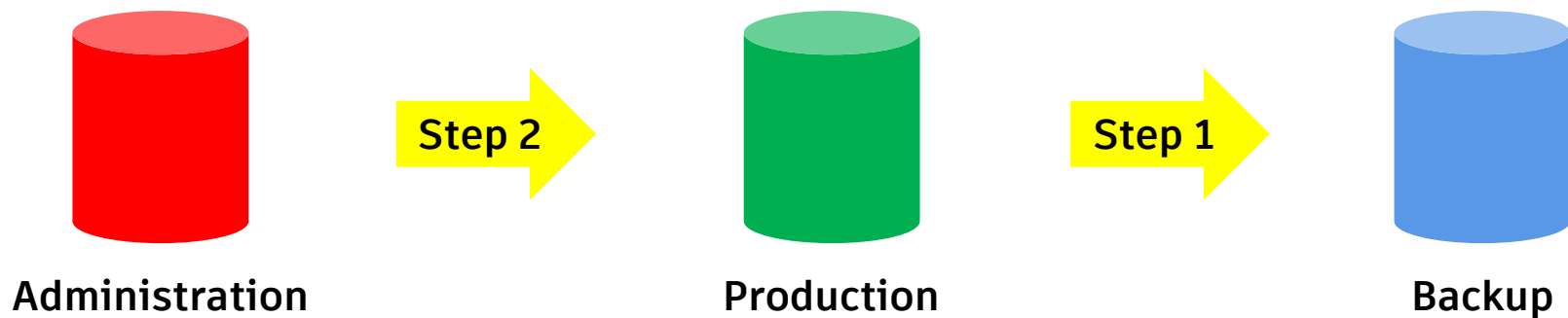




Best Practices

Separate Production and Development

Users reference a different database than where you do your administration

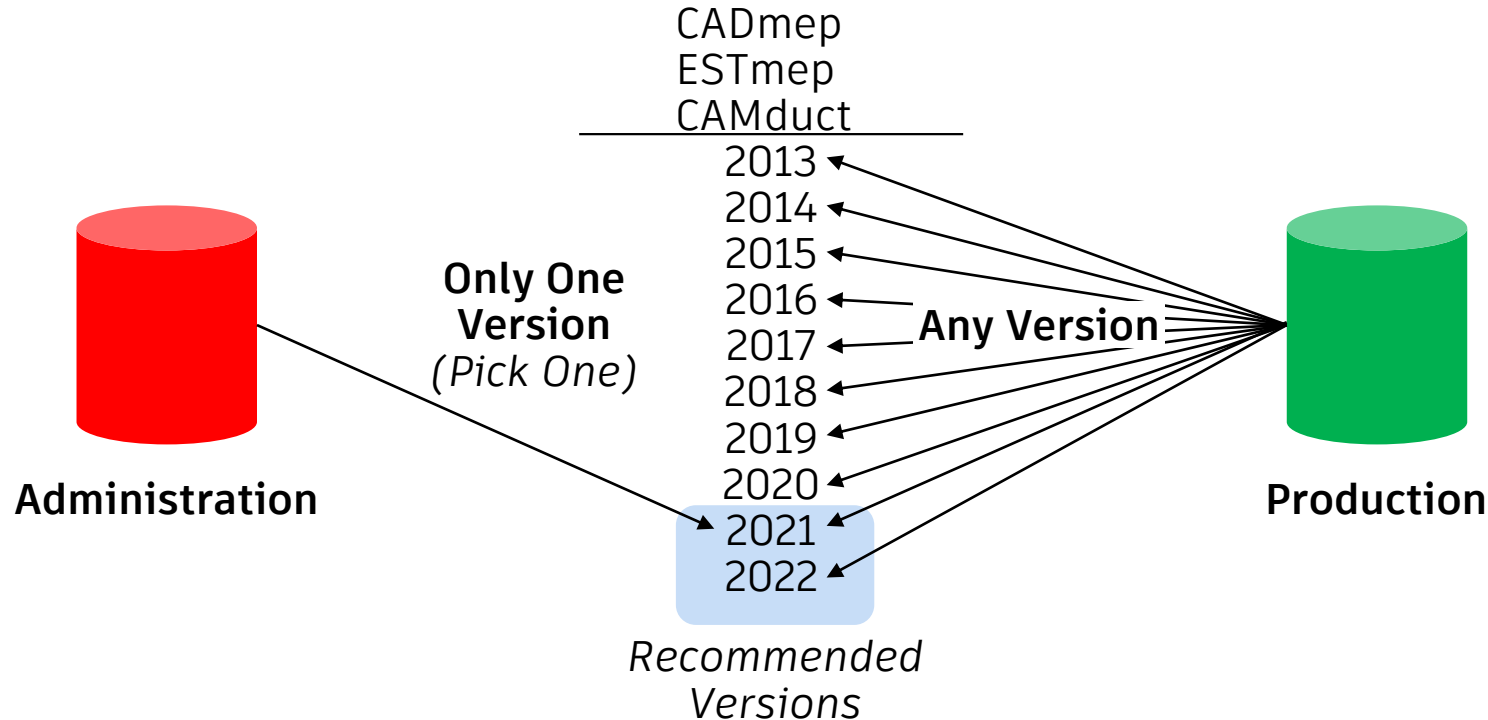


Options:

- *Manual*
- *Robocopy*
- *Applied Software (www.asti.com)*

Single Version for Administration

Always use the same version to Admin your Database



Single Administrator at a Time

No Concurrent Database Administrators (not including Reports or ITM's)

User Details - "Administrator" (1)

Login Name

Password

Password Verification

☒ Enforce Single Login

☒ User Is Administrator

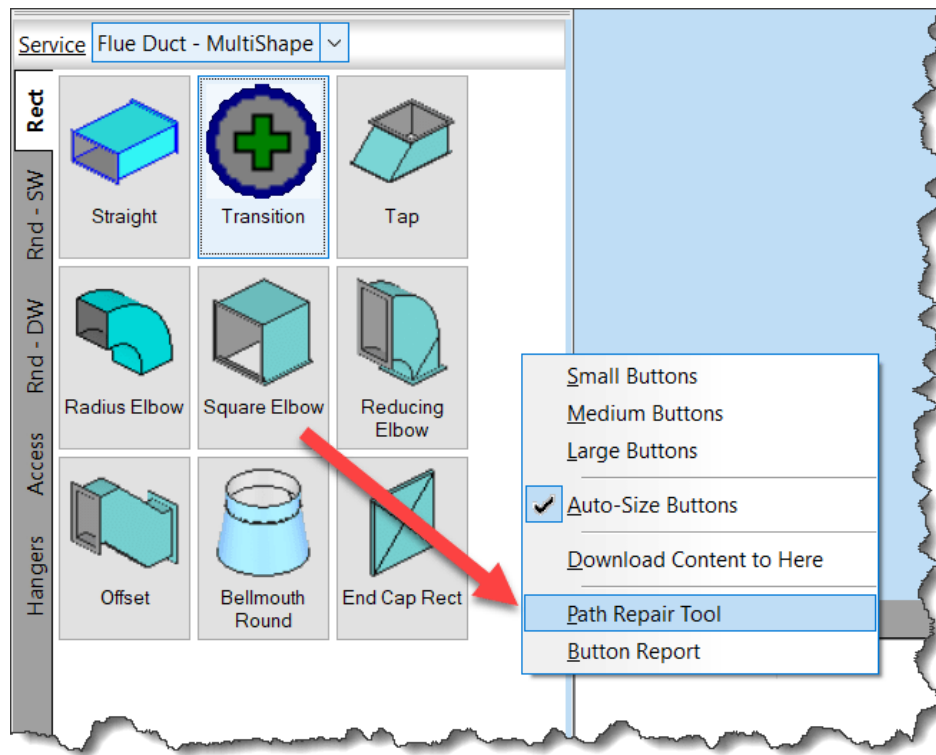
Access

User Can't		User Can:
Break File Locks	>>	Automatically Login
Change Connector&Seam		Change Password
Delete Item Files		Change Pattern Defaults
Edit CADmep Settings		Edit Address Book
Edit Database	<<	Edit Cad Reports
Edit Reports		Edit Data Exports

OK Cancel

Fix Broken Services

Make sure all Services have valid buttons



Don't Use Non-Standard Characters

Using characters can cause unpredictable results.

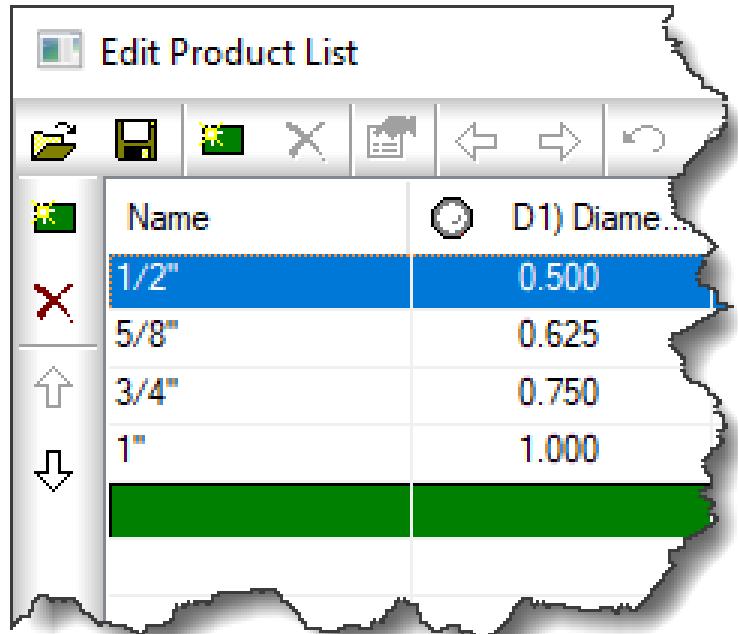
!@#\$%^&*

{ } ~ | ` \ / : ; < > ?

Don't Use Double Quotes

Using Double Quotes for Inch Marks or Other Purposes Cause Export Issues

- Use Export Scripts to review data in Excel.
<https://tinyurl.com/COD-Script-Library>
- Bulk Export Product Lists and use Notepad++ to search files in folders to replace double quotes
- Double Quotes can corrupt data exported to Excel
 - Specifications (Sheetmetal)
 - ITM File names
 - Product List Names
 - Material names, etc.

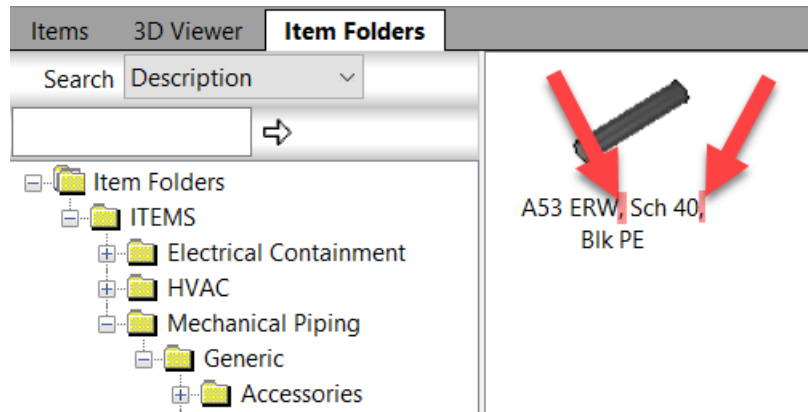


Name	D1) Diame...
1/2"	0.500
5/8"	0.625
3/4"	0.750
1"	1.000

Don't Use Commas

Using Commas in Files, Paths or Names Corrupts Data Exports

- Use Export Scripts to review data in Excel.
<https://tinyurl.com/COD-Script-Library>
- Bulk Export Product Lists and use Notepad++ to search files in folders to replace commas
- Commas can corrupt data exported from Excel
 - Specifications (Sheetmetal)
 - ITM File/Folder names
 - Product List Names
 - Material names, etc.




Use PNG (not BMP) for Images

BMP Image Slow Performance and Take Up Extra Space

Catalogue Item File "A53 ERW, Sch 40, Blk PE" ? X

Item Manufacturing Costing Ancillaries Other
General Options Information Development Design Flow

 Default A53 ERW, Sch 40, Blk PE.png
Change... Default...

Source
Path C:\Users\Public\Documents\Autodesk\Fabric:
Filename A53 ERW, Sch 40, Blk PE

CID 2041 (Based on Pattern 2041)

Description A53 ERW, Sch 40, Blk PE

Alias P01

User Unknown

Type Pipework

Extra Over Off

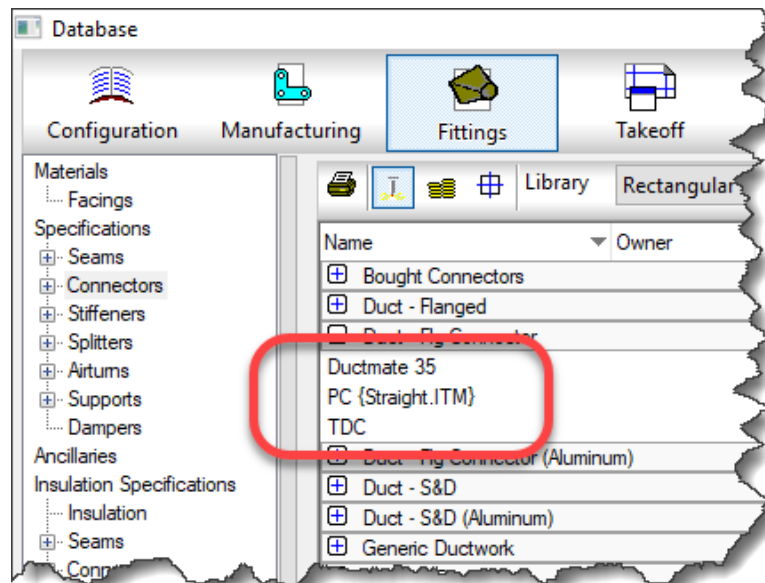
Notes

OK Cancel

Clean Up Proxy Items

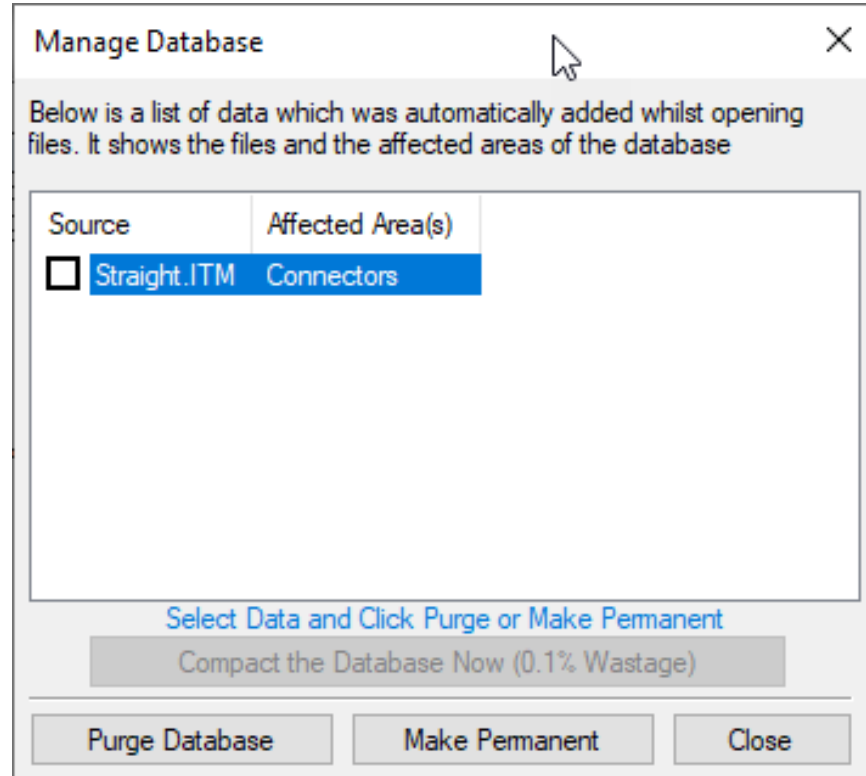
Proxy Items are typically added unintentionally

- Use Export Scripts to review data in Excel.
<https://tinyurl.com/COD-Script-Library>
- Remove or Make Permanent
- Use PURGEDB to Clean/Remove



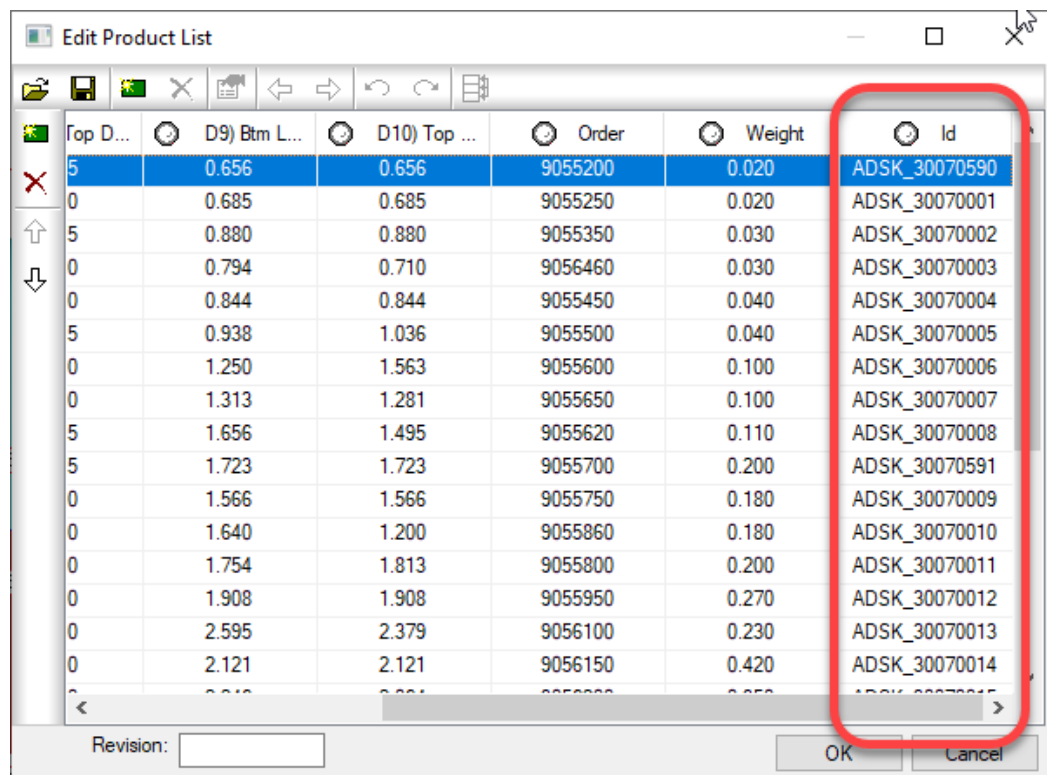
Don't Purge/Compact Database While In Use

Ensure No Users are in the Database Before Purging/Compacting



All ITM's Should Have Database ID's

Create Database ID's for all ITM's and Product Lists



The screenshot shows a software window titled "Edit Product List". It contains a table with several columns: "Top D...", "D9) Btm L...", "D10) Top ...", "Order", "Weight", and "Id". The "Id" column is highlighted with a red rectangle. The first row of the table is highlighted in blue.

Top D...	D9) Btm L...	D10) Top ...	Order	Weight	Id
5	0.656	0.656	9055200	0.020	ADSK_30070590
0	0.685	0.685	9055250	0.020	ADSK_30070001
5	0.880	0.880	9055350	0.030	ADSK_30070002
0	0.794	0.710	9056460	0.030	ADSK_30070003
0	0.844	0.844	9055450	0.040	ADSK_30070004
5	0.938	1.036	9055500	0.040	ADSK_30070005
0	1.250	1.563	9055600	0.100	ADSK_30070006
0	1.313	1.281	9055650	0.100	ADSK_30070007
5	1.656	1.495	9055620	0.110	ADSK_30070008
5	1.723	1.723	9055700	0.200	ADSK_30070591
0	1.566	1.566	9055750	0.180	ADSK_30070009
0	1.640	1.200	9055860	0.180	ADSK_30070010
0	1.754	1.813	9055800	0.200	ADSK_30070011
0	1.908	1.908	9055950	0.270	ADSK_30070012
0	2.595	2.379	9056100	0.230	ADSK_30070013
0	2.121	2.121	9056150	0.420	ADSK_30070014

At the bottom of the window, there is a "Revision:" label followed by a text input field, and "OK" and "Cancel" buttons.

Add Content Should Have ProdInfo Entries

Ensure Product Information is Filled Out For All Content

Product Info Editor (C:/Users/Public/Documents/Autodesk/Fabrication 2022/Fabrication Imperial Content/V3.07/database/prodinfo.map)

File Edit Help

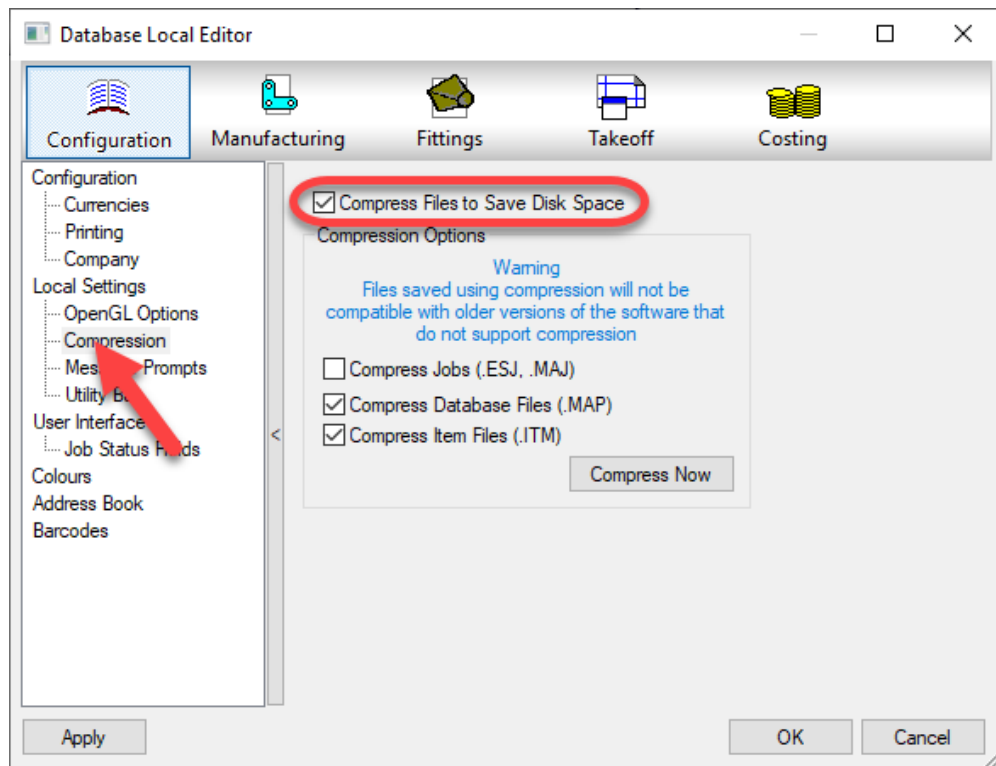
Edit Groups Show All Show All Show All Show All Show All Show All Show All Show All Show All Show All Show All Show All

Translation English

Id	Group	Manufacturer	Product	Description	Size	Material	Specification	Install Type	Source Des...	Range	Finish
ADSK_1000...	Electrical	Generic	TBC	Bend	2" (1" deep)	Alu-Zinc	Electrical	Coupled	Bend	Basket	Zinc Plated
ADSK_1000...	Electrical	Generic	TBC	Bend	4" (1" deep)	Alu-Zinc	Electrical	Coupled	Bend	Basket	Zinc Plated
ADSK_1000...	Electrical	Generic	TBC	Bend	6" (1" deep)	Alu-Zinc	Electrical	Coupled	Bend	Basket	Zinc Plated
ADSK_1000...	Electrical	Generic	TBC	Bend	8" (1" deep)	Alu-Zinc	Electrical	Coupled	Bend	Basket	Zinc Plated
ADSK_1000...	Electrical	Generic	TBC	Bend	12" (1" deep)	Alu-Zinc	Electrical	Coupled	Bend	Basket	Zinc Plated
ADSK_1000...	Electrical	Generic	TBC	Bend	18" (1" deep)	Alu-Zinc	Electrical	Coupled	Bend	Basket	Zinc Plated
ADSK_1000...	Electrical	Generic	TBC	Bend	20" (1" deep)	Alu-Zinc	Electrical	Coupled	Bend	Basket	Zinc Plated
ADSK_1000...	Electrical	Generic	TBC	Bend	24" (1" deep)	Alu-Zinc	Electrical	Coupled	Bend	Basket	Zinc Plated
ADSK_1000...	Electrical	Generic	TBC	Bend	2" (2" deep)	Alu-Zinc	Electrical	Coupled	Bend	Basket	Zinc Plated
ADSK_1000...	Electrical	Generic	TBC	Bend	4" (2" deep)	Alu-Zinc	Electrical	Coupled	Bend	Basket	Zinc Plated
ADSK_1000...	Electrical	Generic	TBC	Bend	6" (2" deep)	Alu-Zinc	Electrical	Coupled	Bend	Basket	Zinc Plated
ADSK_1000...	Electrical	Generic	TBC	Bend	8" (2" deep)	Alu-Zinc	Electrical	Coupled	Bend	Basket	Zinc Plated
ADSK_1000...	Electrical	Generic	TBC	Bend	12" (2" deep)	Alu-Zinc	Electrical	Coupled	Bend	Basket	Zinc Plated
ADSK_1000...	Electrical	Generic	TBC	Bend	18" (2" deep)	Alu-Zinc	Electrical	Coupled	Bend	Basket	Zinc Plated
ADSK_1000...	Electrical	Generic	TBC	Bend	20" (2" deep)	Alu-Zinc	Electrical	Coupled	Bend	Basket	Zinc Plated
ADSK_1000...	Electrical	Generic	TBC	Bend	24" (2" deep)	Alu-Zinc	Electrical	Coupled	Bend	Basket	Zinc Plated
ADSK_1000...	Electrical	Generic	TBC	Bend	2" (4" deep)	Alu-Zinc	Electrical	Coupled	Bend	Basket	Zinc Plated
ADSK_1000...	Electrical	Generic	TBC	Bend	4" (4" deep)	Alu-Zinc	Electrical	Coupled	Bend	Basket	Zinc Plated
ADSK_1000...	Electrical	Generic	TBC	Bend	6" (4" deep)	Alu-Zinc	Electrical	Coupled	Bend	Basket	Zinc Plated
ADSK_1000...	Electrical	Generic	TBC	Bend	8" (4" deep)	Alu-Zinc	Electrical	Coupled	Bend	Basket	Zinc Plated
ADSK_1000...	Electrical	Generic	TBC	Bend	12" (4" deep)	Alu-Zinc	Electrical	Coupled	Bend	Basket	Zinc Plated
ADSK_1000...	Electrical	Generic	TBC	Bend	18" (4" deep)	Alu-Zinc	Electrical	Coupled	Bend	Basket	Zinc Plated
ADSK_1000...	Electrical	Generic	TBC	Bend	20" (4" deep)	Alu-Zinc	Electrical	Coupled	Bend	Basket	Zinc Plated

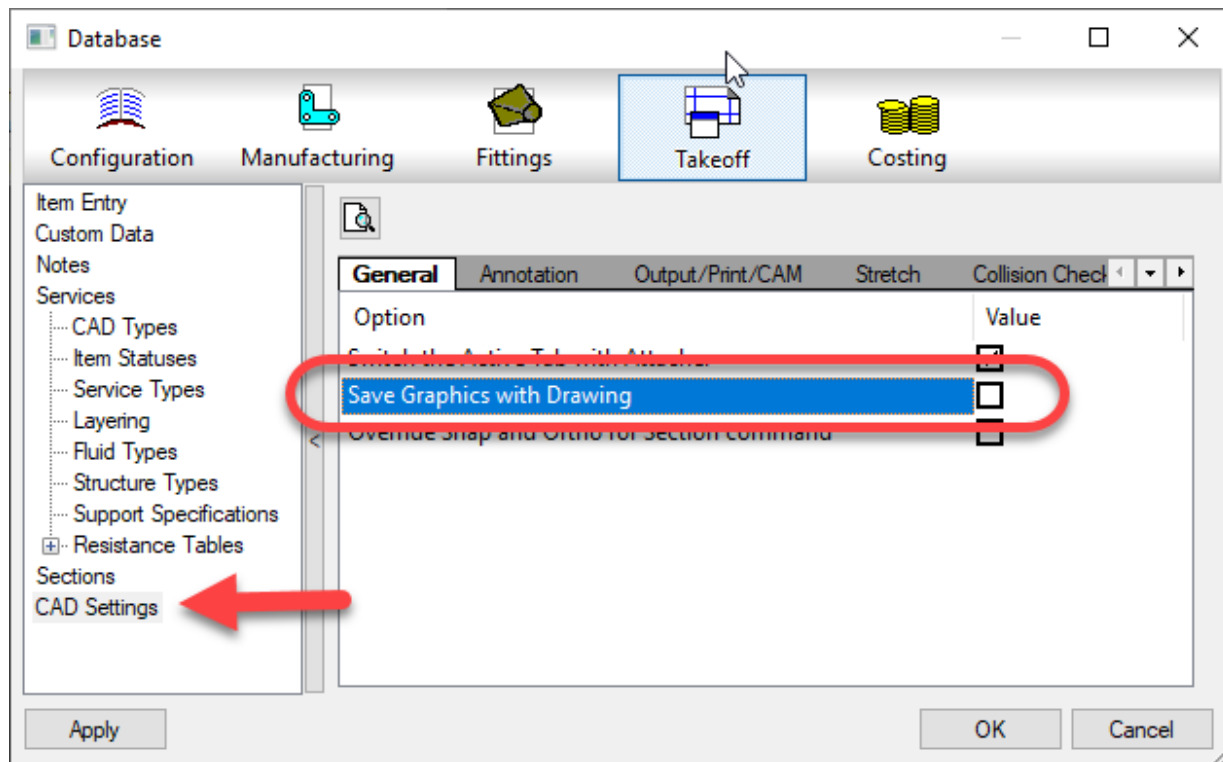
Compress Data Files

Ensure Database Compression is Turned On



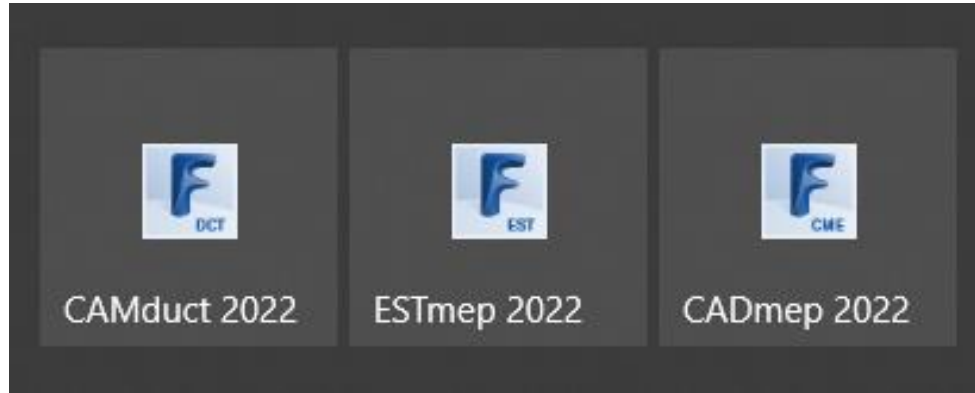
Disable Save with Graphics

Will Increase AutoCAD DWG File Size Significantly



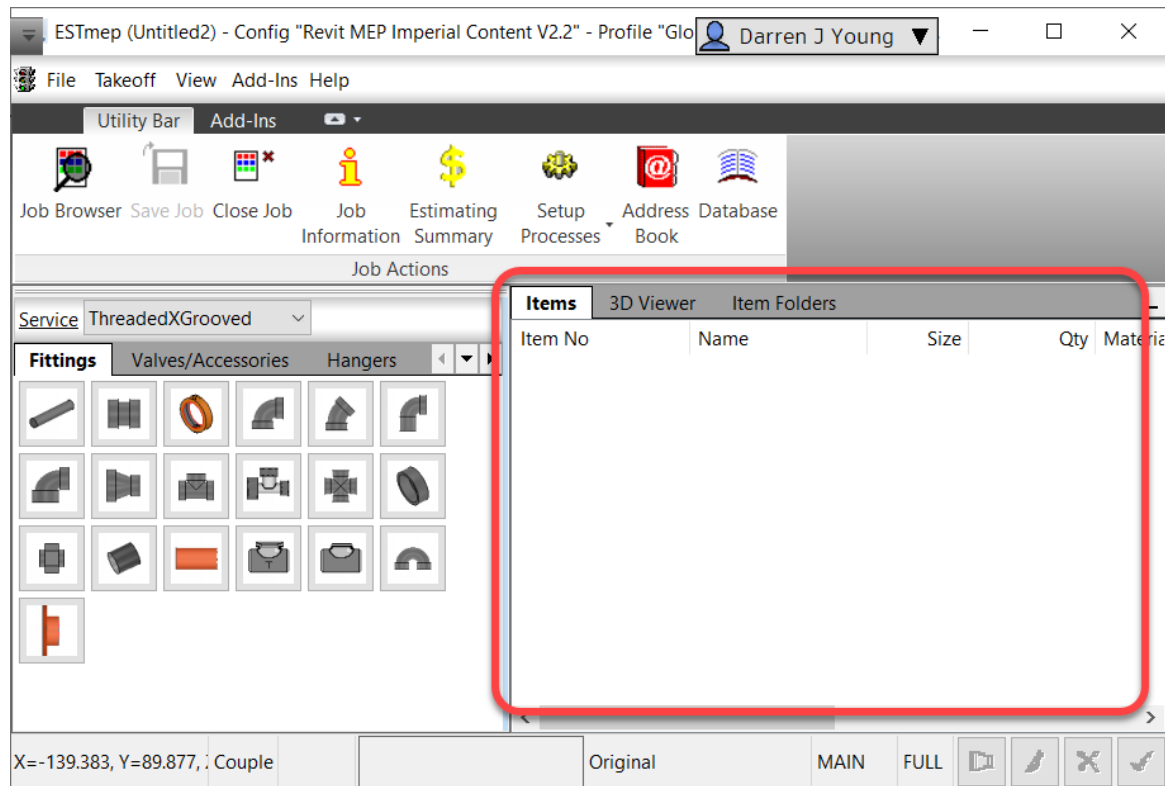
Administer Database from NEW Launch

Load CADmep/ESTmep/CAMduct Fresh Before Administering Database



Don't Open Data While Using Administer

Opening DWG, MAJ or ESJ's Can Create Proxy Items



Don't Store EST Data in DWGs

Estimating Data is Stored in DWG's By Default

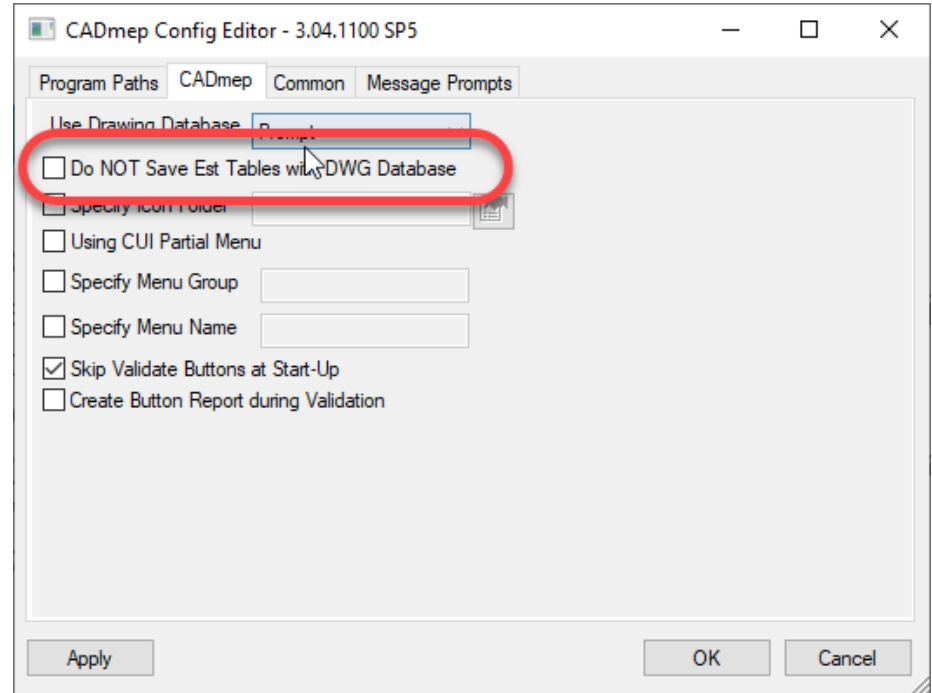
- Setting is Specific to Each Logged In User
- Setting is Specific to Each CADmep Version
- IT can push settings in Registry

Key:

HKEY_CURRENT_USER\Software\Autodesk\Fabrication ####\CADmep

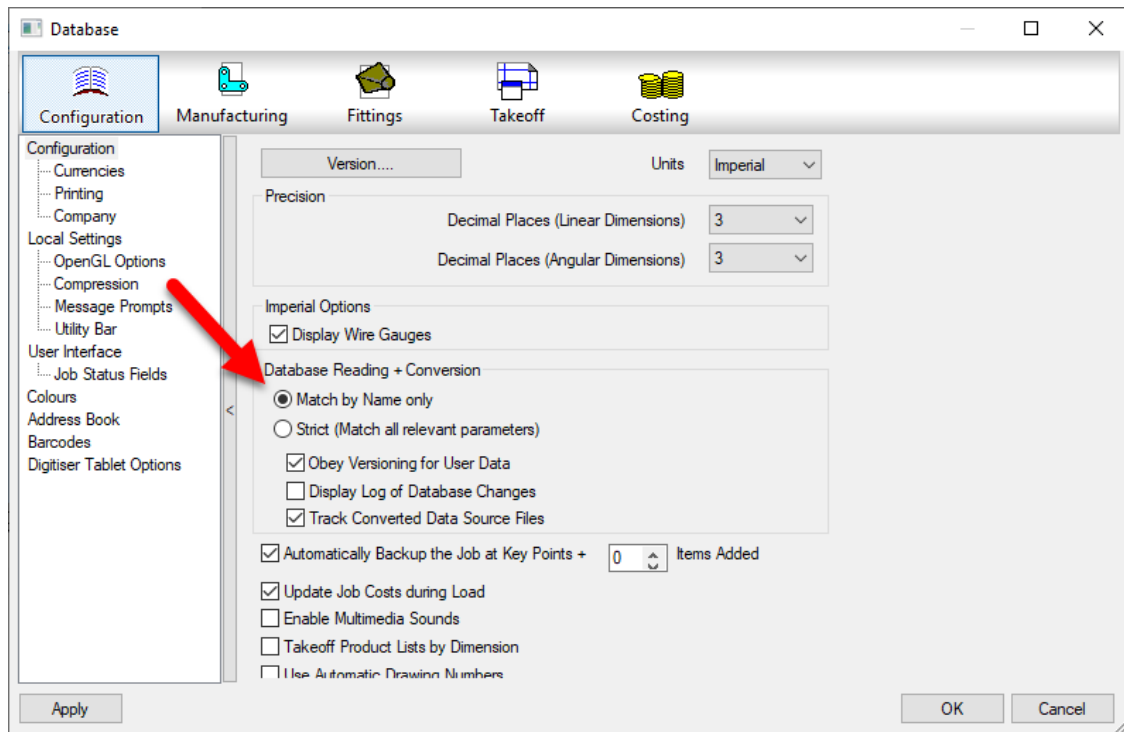
Value: StoreEstDatabase

Data: False



Match By Name Only

Database Should NOT Use Strict Matching



Naming / Organization Standards for Everything

Everything Should have a Naming Standard

ITM's
Services
Connectors
Materials
Ancillaries
Cost Tables
Database ID's
ProdInfo Data
Specifications
Folders
...etc...

Work Email

dyoung@umci.com

Personal Email

dyoung@mcwi.com

Blog

<https://www.darrenjyoung.com>

LinkedIn

<https://www.linkedin.com/in/darrenjyoung>

The background of the slide features four abstract, dark gray, three-dimensional geometric shapes in the corners. These shapes resemble stylized, faceted crystals or architectural elements, each with sharp edges and reflective surfaces that catch the light, creating bright highlights and deep shadows. They are positioned in the top-left, top-right, bottom-left, and bottom-right corners, framing the central text.

AUTODESK UNIVERSITY

Autodesk and the Autodesk logo are registered trademarks or trademarks of Autodesk, Inc., and/or its subsidiaries and/or affiliates in the USA and/or other countries. All other brand names, product names, or trademarks belong to their respective holders. Autodesk reserves the right to alter product offerings, specifications and pricing at any time without notice, and is not responsible for typographical or graphical errors that may appear in this document.

© 2021 Autodesk. All rights reserved.