



Why 360 Cameras Are Becoming the Standard for Site Documentation

Session CS500556

Brian Vizarreta

SMM | StructionSite



Brian Vizarreta
SMM at StructionSite

Previous Experience:

Innovation Manager & Asst. Super at Consigli Construction

Virtual Harvard project – Photogrammetry for Historic Buildings

Downloads



CS500556

Why 360 Cameras Are Becoming the Standard for Site Documentation

Brian Vizarrata
StructionSite

Learning Objectives

- Learn to implement 360 cameras on site
- Helping your organization integrate 360 capture into workflow
- [Navisworks](#) Integration
- Autodesk Build Integration with StructionSite

Description

In this session, we'll take a deep dive into how cameras can instantaneously make an impact at the project level or at the organizational level. We'll explore how we can begin to use photos not just as a reference tool, but as a collaboration, scheduling, and risk management tool.

Speaker



Fortunate enough to have worked for great people and institutions. Both as an [intrapreneur](#) and as a researcher, I have been able to experience multiple areas of the construction industry.

Previously held the titles of Innovation Manager and Assistant Superintendent for Consigli Construction having experienced both field operations as well as scaling/vetting technologies for company initiatives. Also, previously a Research Associate at Harvard University founding/project managing the Virtual Harvard project which consisted of creating high resolution photogrammetry models for historic preservation.

Why 360 Cameras Are Becoming the Standard for Site Documentation

Key Objectives:

- Learn to implement 360 cameras on site
- Helping your organization integrate 360 capture into workflows
- Navisworks Integration
- Autodesk Build Integration with StructionSite

Go from this



to this

The Problem.

Context
Location
Time Organization

Why 360 Cameras?



SCALABILITY

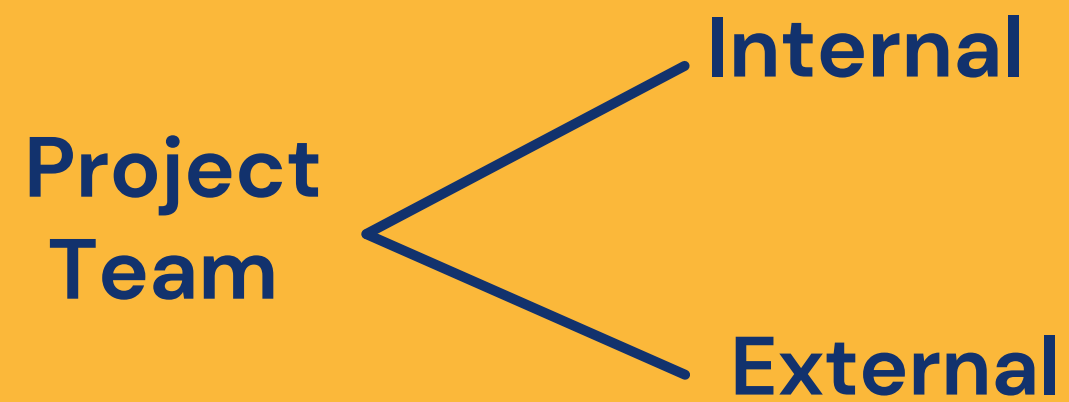
EASE OF USE

SPEED

VIDEOWALK

Return of Time Investment

Remote Collaboration



Scheduling

4 Week Look Aheads &
Monthly Schedules

Change Management

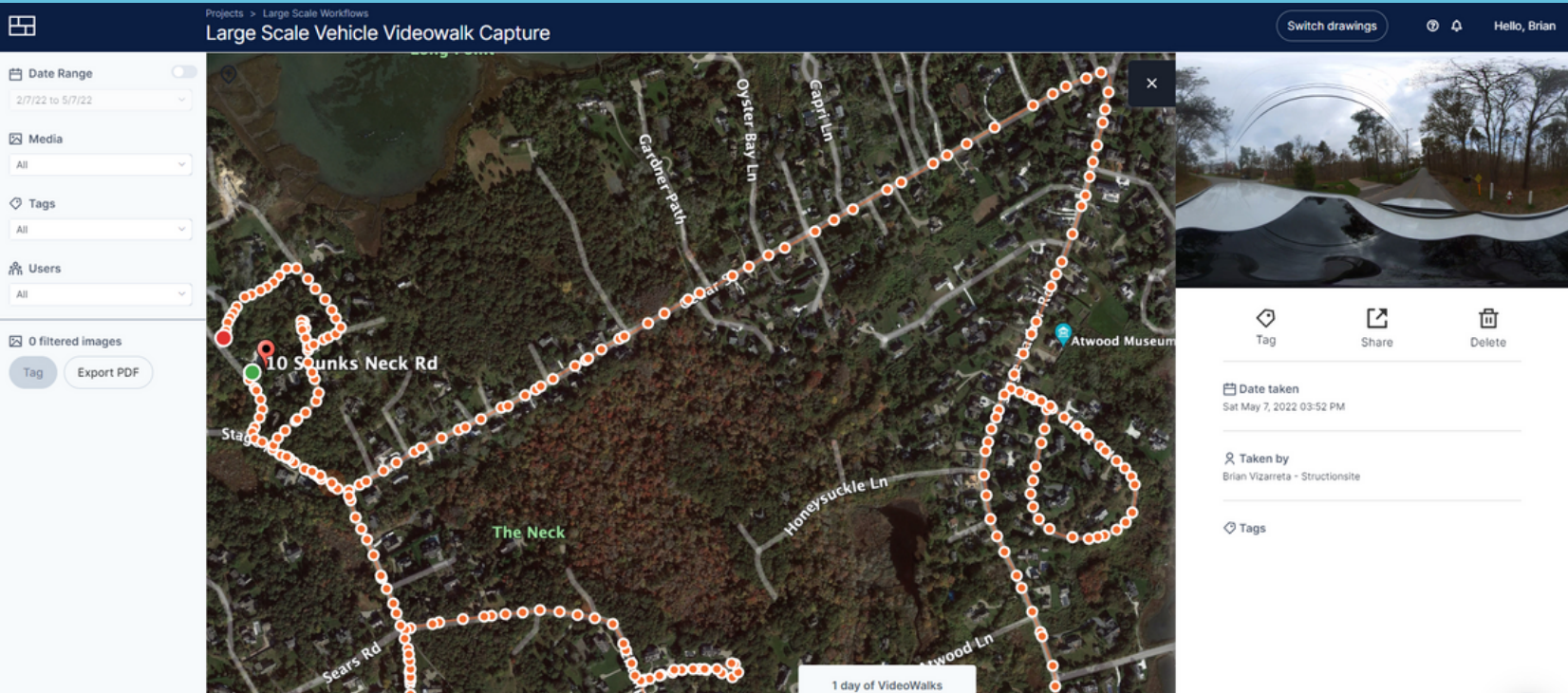
Notes/RFIs /
Observations

Few Implementation Tips

- Set Milestone Capture Dates for 360 Photos
- VideoWalk Weekly the day prior to Owner's Meetings / Foreman Meetings
- Kick Off Meeting with Project Services Groups, Design Teams, and Remote Staff
- Utilize in a Foreman's Meeting, and/or Design Team Meeting

Pre-Construction

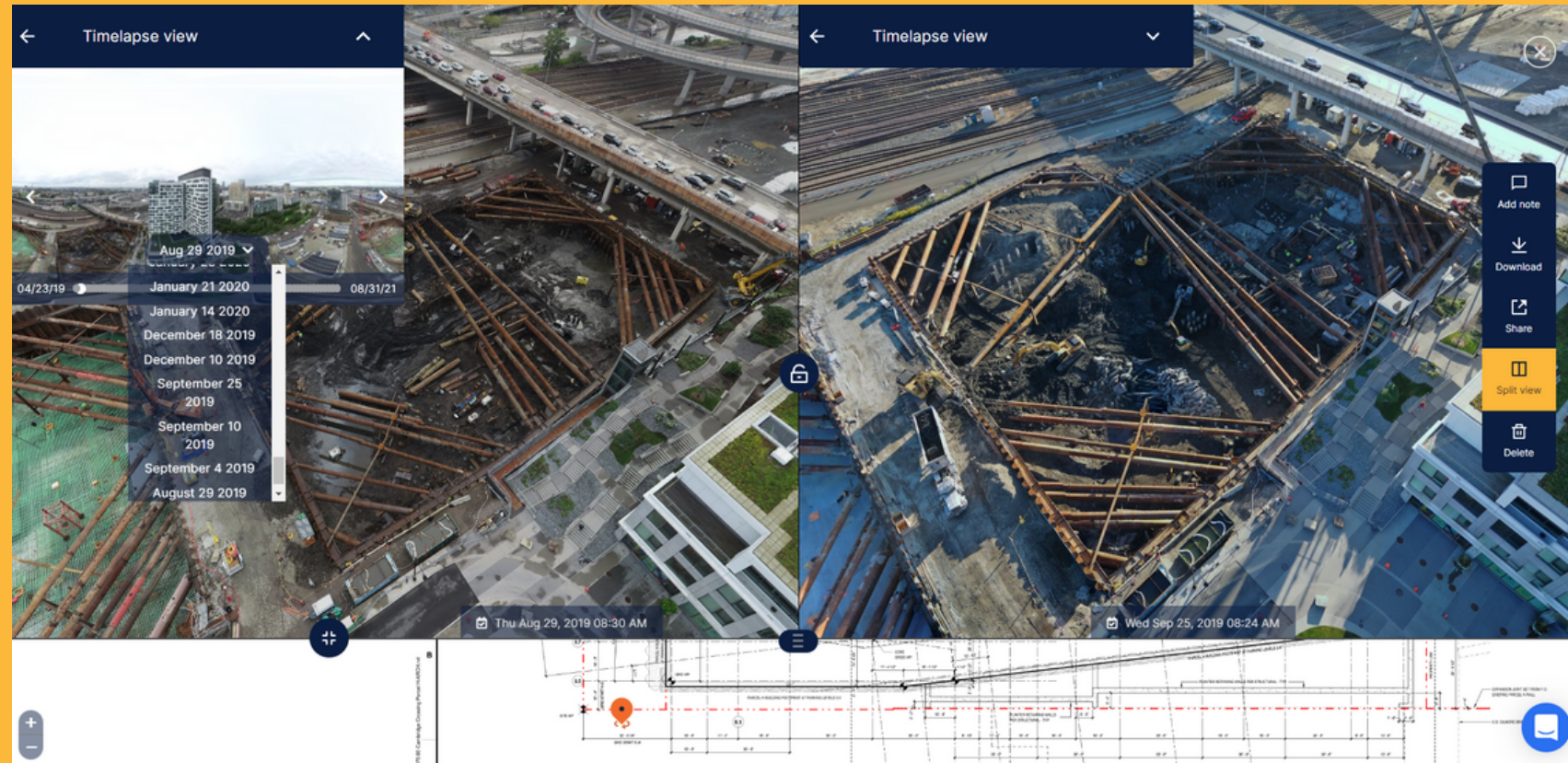
Existing & Exploratory Conditions for MEP
Coordination



Value Add:

360 Degrees of Context





Site Work

excavation, under slab utilities, paving, concrete work and landscaping, etc.





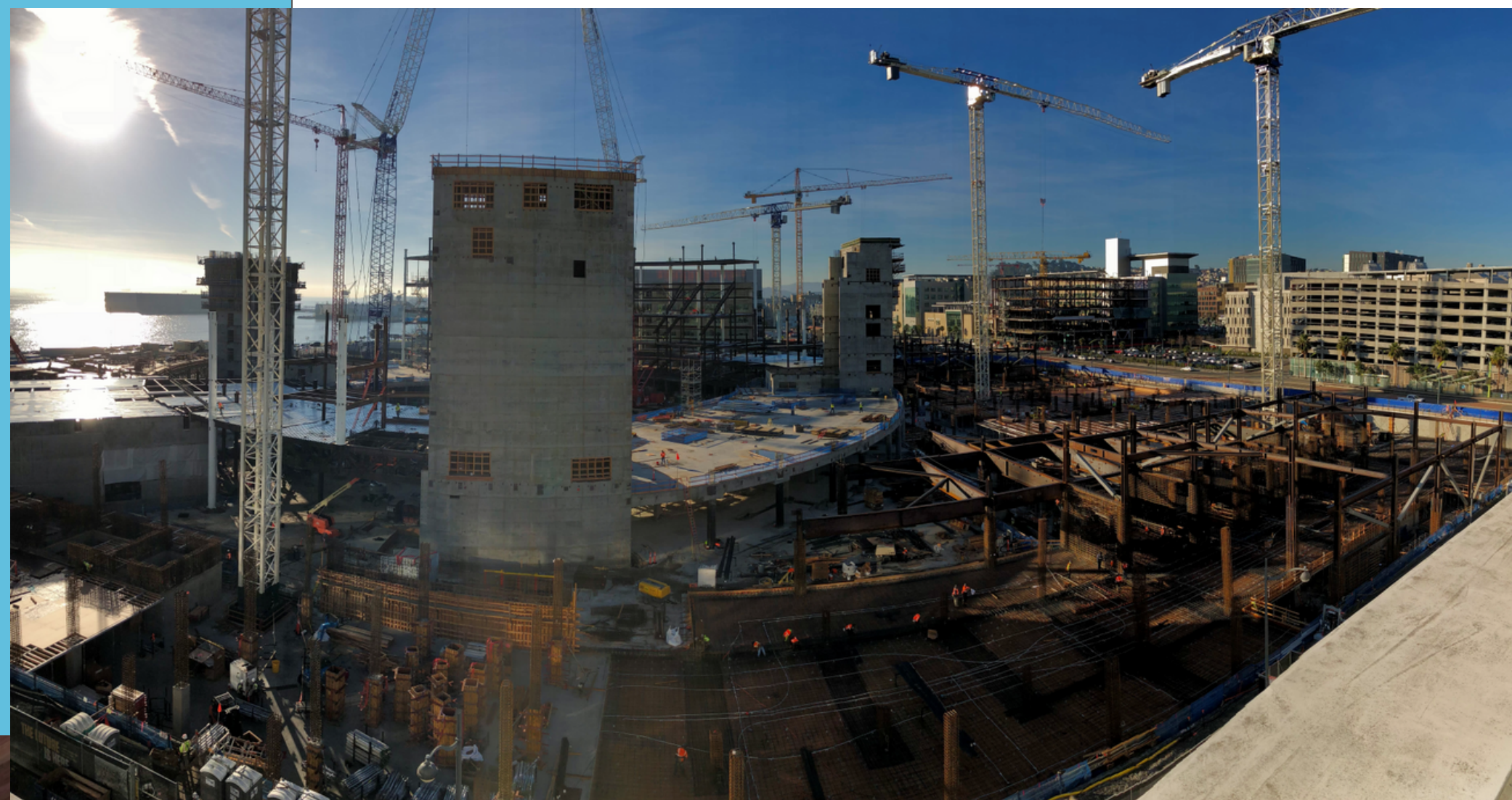
Pre-Pour

Rebar/ Post Tension Cables
Welded Wire Mesh
Sleeve Embeds, Block Outs, etc.

Structural

Metal Decking and Steel –
Progress/Completion

Structural Connections, Welds, Bolts,
Plates, Beam Pens



Framing & In-Wall

In-Wall Completion

Fire Stopping Documentation

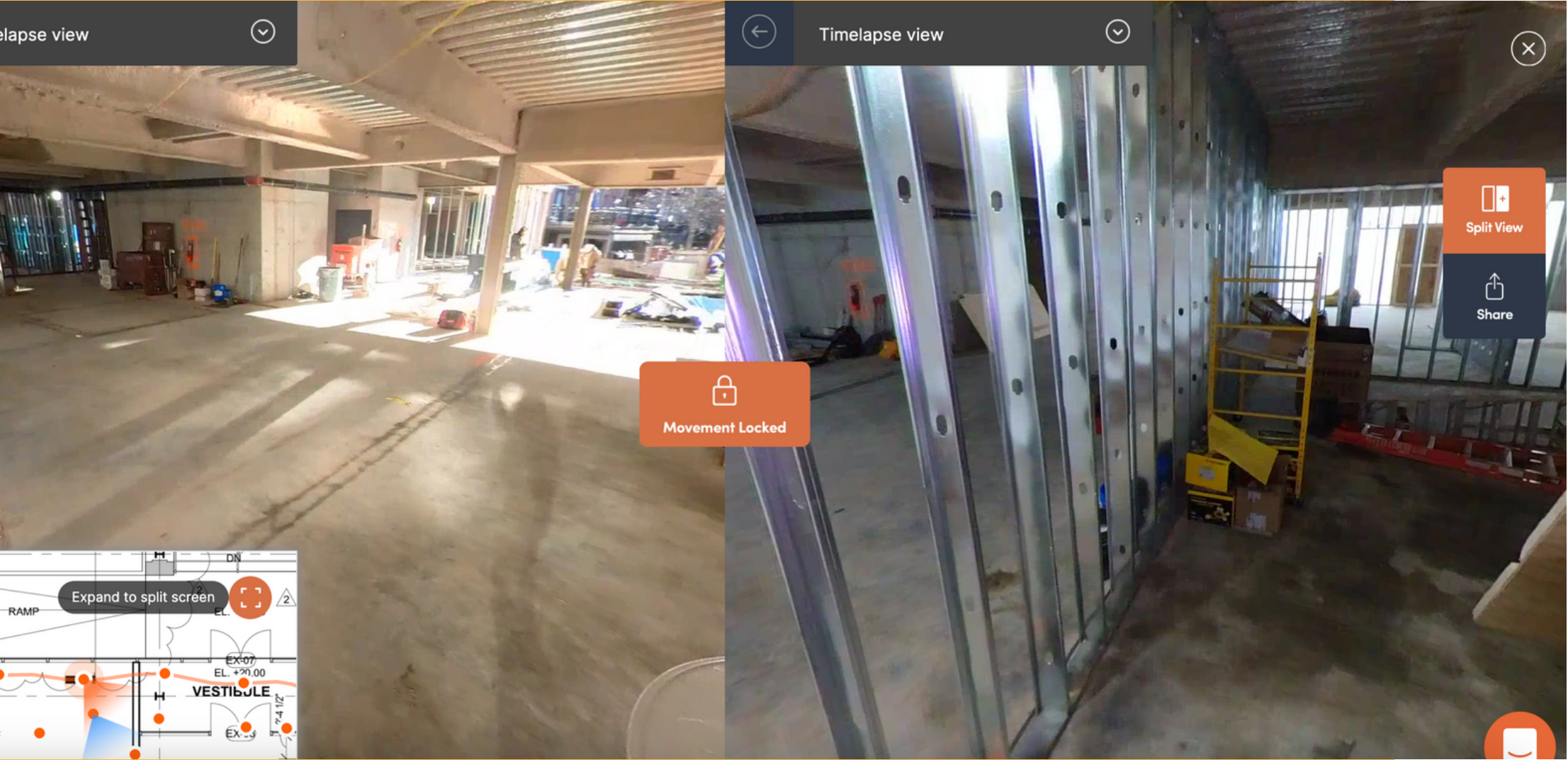
Photos of Blocking



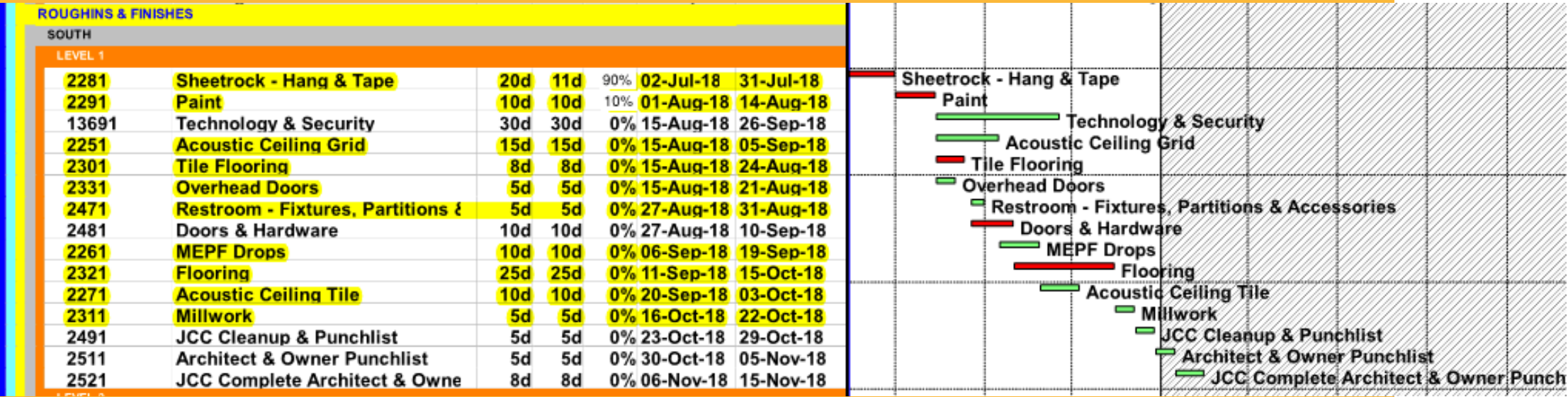
Finishes & Close Out

Punch List & Substantial Completion
Prior to TI or Entire Building Turn Over
Lessons Learned for Future Projects





Scheduling



3 WEEK LOOK AHEADS
MONTHLY UPDATES
FOREMAN MEETING PLANNING

MEPF Sequencing & Install

Autodesk Navisworks Manage 2023 StructionSiteModel2.nwd

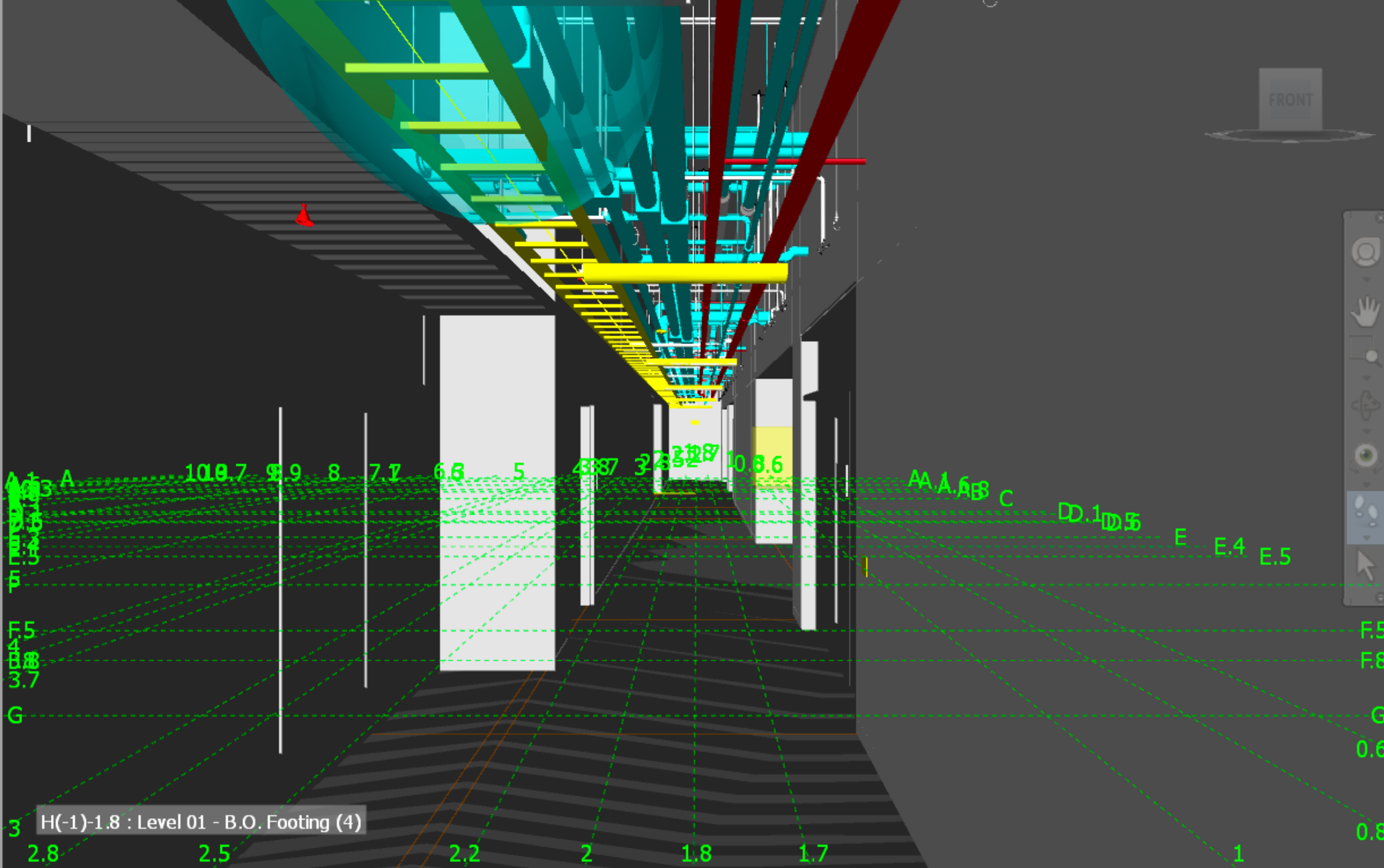
Type a keyword or phrase trevorQFAKQ

Home Viewpoint Review Animation View Output BIM 360 Glue Render StructionSite

Align Add Views Batch Create Settings Manage View Sync

Setup Tools

Selection Tree




FRONT

H(-1)-1.8 : Level 01 - B.O. Footing (4)


StructionSite ViewSync

StructionSite Navis Plugin (Level 1)

VideoWalk: December 18, 2019 ☐ Auto-Center



Viewer



July 30 2019 X-Ray

Ready 1 of 1 2369 MB

Autodesk BUILD

Drawing Integration

The image is a screenshot of the Autodesk Construction Cloud web application. The interface is divided into two main panels. The left panel, titled 'Files', shows a sidebar with navigation options like Home, Sheets, Files, Issues, Forms, Photos, RFIs, Submittals, Meetings, Schedule, Assets, Reports, Members, Bridge, and Settings. The main area of the left panel displays a folder tree under 'Project Files' with subfolders like Bids, Contractors, Coordination, Corresponden..., Crystal-Clear..., Delta-Engine..., Drawings, Handover doc..., Quantify mod..., StructionSite..., and Supported fil... The 'Drawings' folder is selected, showing a list of 30 items, including various architectural plans and elevations for an office building. The right panel, titled 'Drawings', shows a table of drawing entries. The table has columns for 'Drawing title', 'Photos', '360° photos', 'VideoWalks', and 'Last updated on'. Three drawing entries are visible: A103 - OFFICE - FLOOR-ROOF PLAN - LEVEL 5.pdf, A104 - OFFICE - CEILING PLAN - BASEMENT.pdf, and A105 - OFFICE - CEILING PLAN - LEVEL 1.pdf. The A105 entry is highlighted. The top of the interface shows the user's name 'jon Morley' and the project name 'Sample Project - Seaport Civic Center'.

Embedded Experience

AUTODESK Construction Cloud

Insight

DASHBOARDS

My Dashboard

Design

Project Controls

Quality

Safety

Data Connector

Reports

Trial account jonrmorley2@gmail.com

Sample Project - Seaport Civic Center

My Dashboard

StructionSite

Carpenters Training Center

Drawings

Drawing title	Photos	360° photos	VideoWalks	Last updated on
Floor 1	0	0	0	Wed May 4, 2022
Floor 2	0	0	0	Mon Nov 22, 2021

Project Address

Weather

67°

AUTODESK UNIVERSITY

Notes, RFIs, Issues





Why 360 Cameras Are Becoming the Standard for Site Documentation

Session CS500556

Brian Vizarreta

brian@struactionsite.com

<https://www.linkedin.com/in/brianvizarreta/>