

# Manufacturing Learning Experience

Paul Normand

Principal Content Developer/SME

Jay Grossman

Principal User Experience Designer



# Agenda

- Introductions
- The new world of learning experience
- What we did
- Did we get it right
- What else is important to you?

# Introductions

Name

Company

Title / Position

Autodesk Products Used

# The New World of Learning Experience

# WikiHelp retires



# Transition from Wiki to the Autodesk Knowledge Network

**AUTODESK® INVENTOR® 2014 | HELP**

**Welcome to Inventor Learning**  
Here you can acquire essential skills through video tutorials and much more. Search or browse from the navigational panel on the left or simply start with the essentials below.

**Essential Skills Videos**

Overview View Navigation Work Features Import AutoCAD Files

Create Sketches Create Parts Assembly Basics Drawing Creation

**Learn about Inventor**

What's New  
Getting Started  
Tutorials  
Learning Path  
Help Topics

**Additional Resources**

Autodesk.com  
Mosaic Community  
Autodesk Labs  
Autodesk User Group International (AUGI)  
Graphic Drivers

New learning and support environment



# Content for the way you work



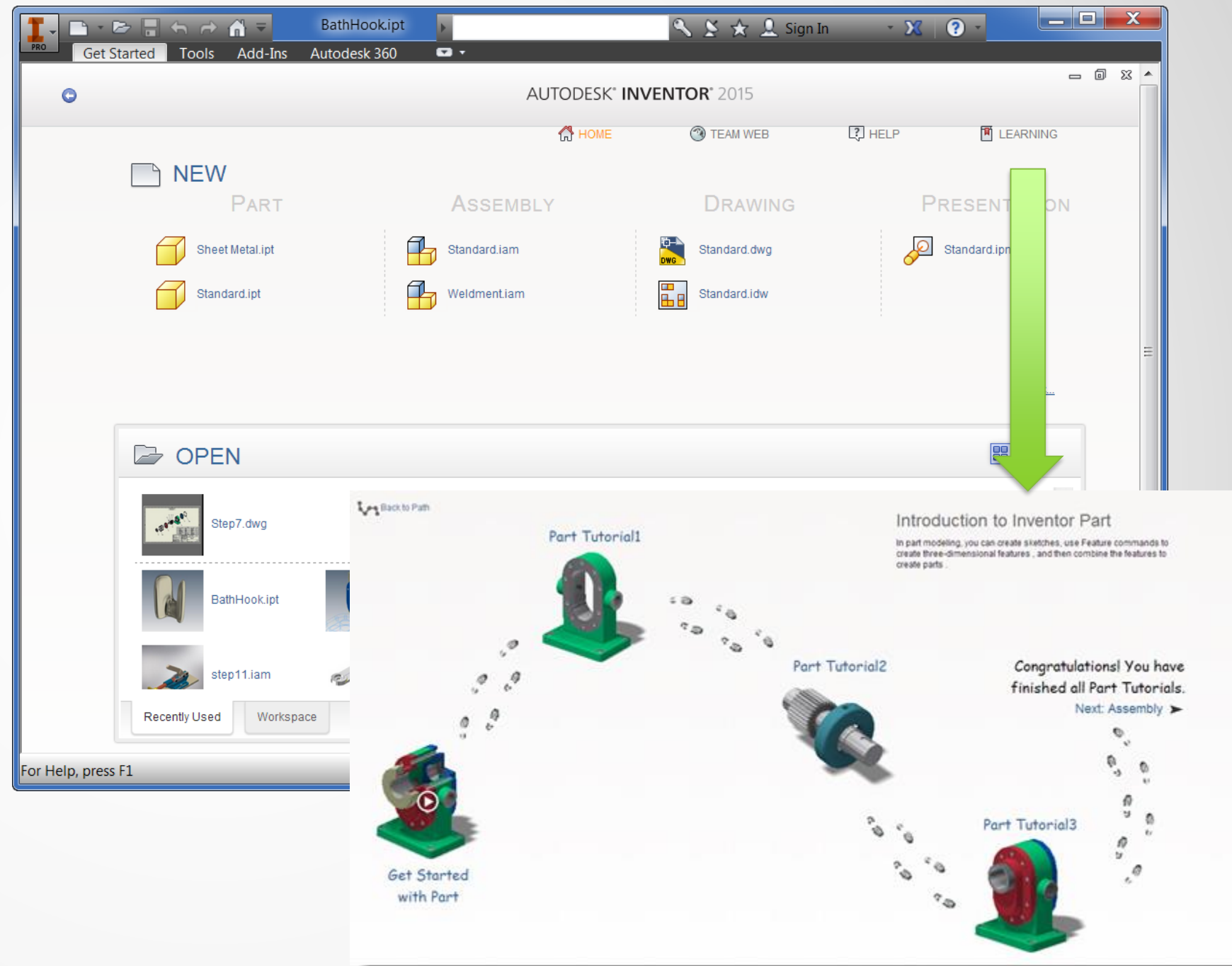
Easy to Find/  
There when  
you need it

Small Bites/  
Easy to  
Consume

Personal, Fun,  
& Engaging

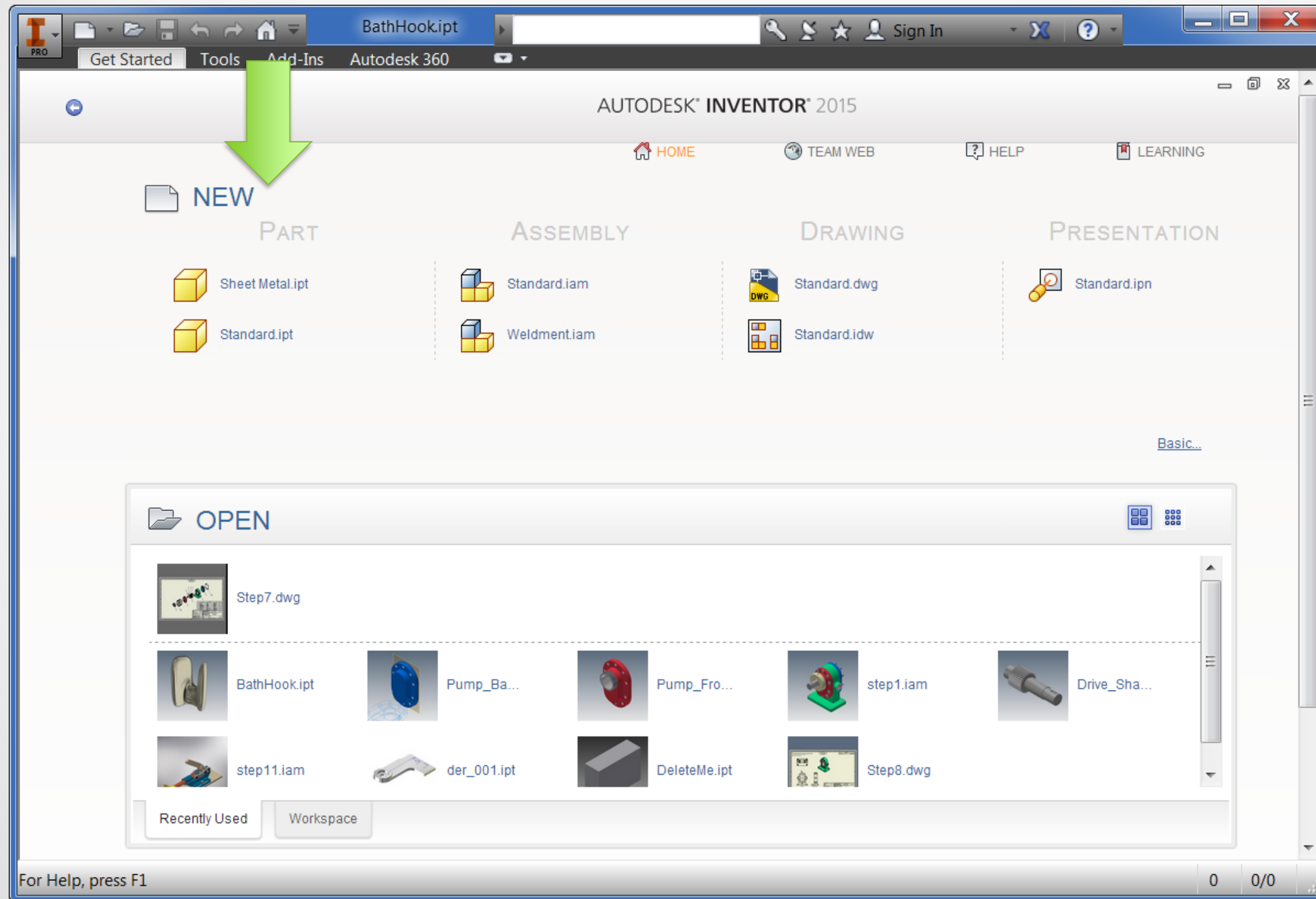
# We support how you work

- Home dashboard
- Consolidated search
- Interactive tutorial path
- Learning path
- UI control for offline online
- Improved access to Help



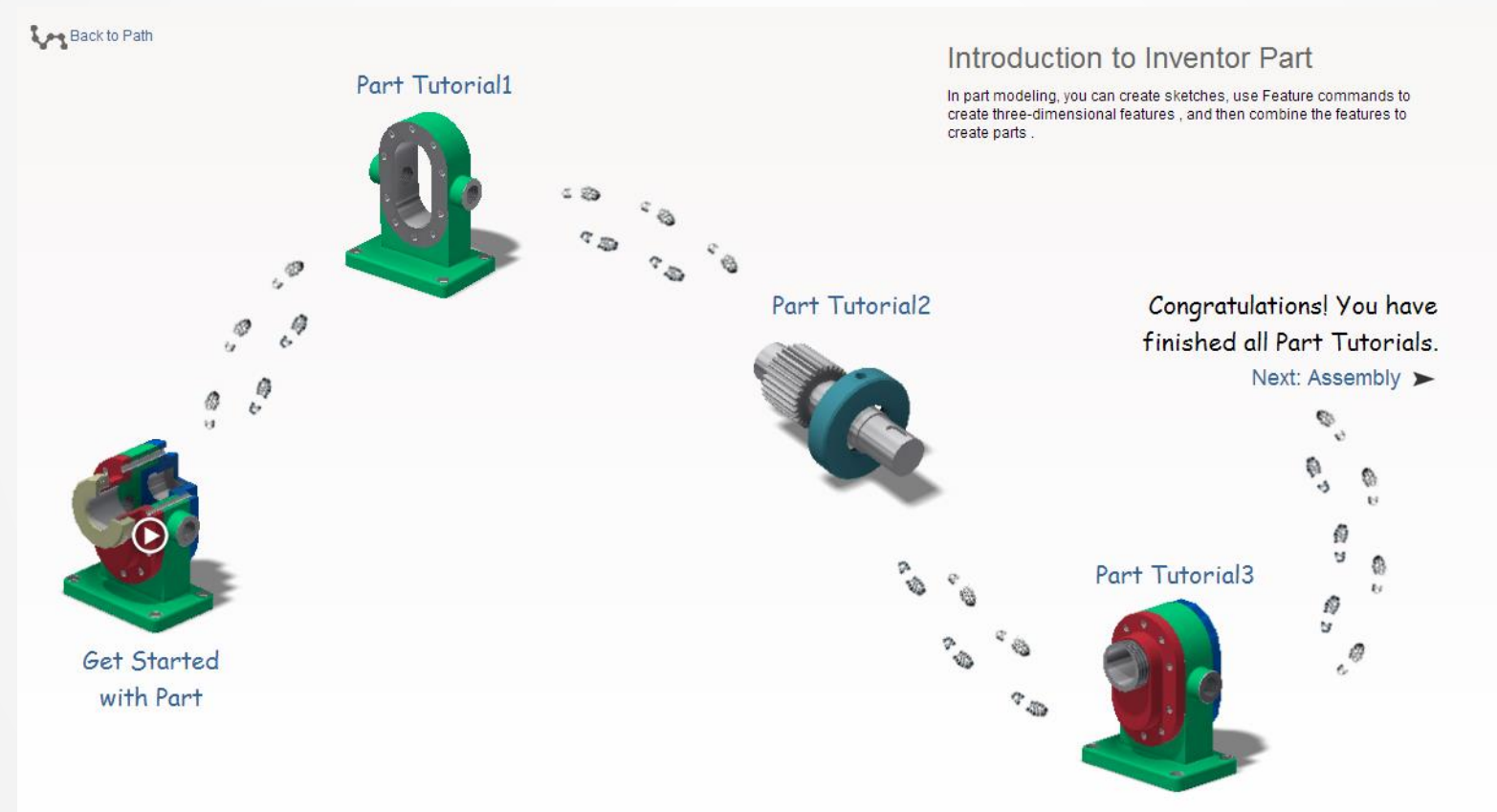


# Inventor Home: Your own personal dashboard



# Interactive Tutorial Path

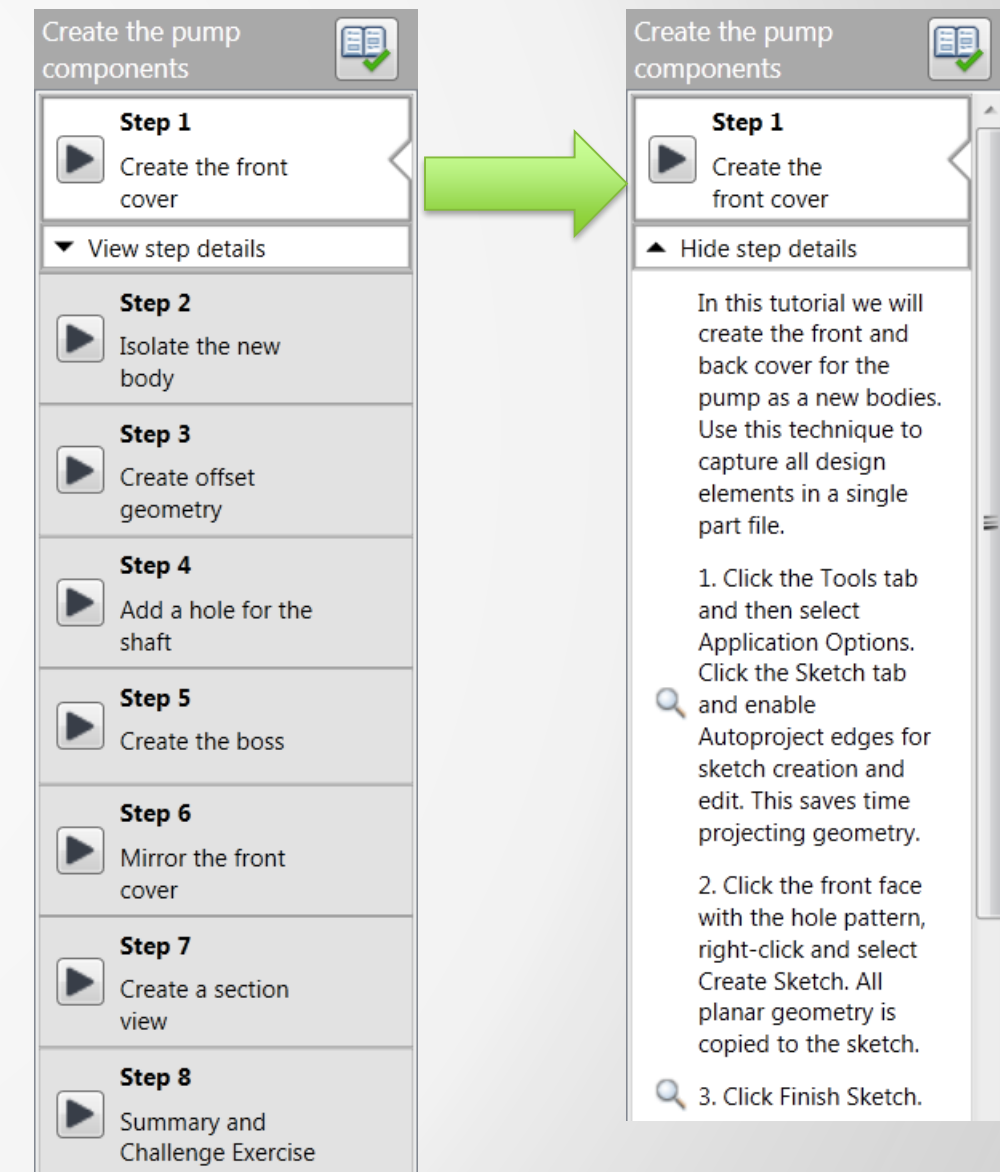
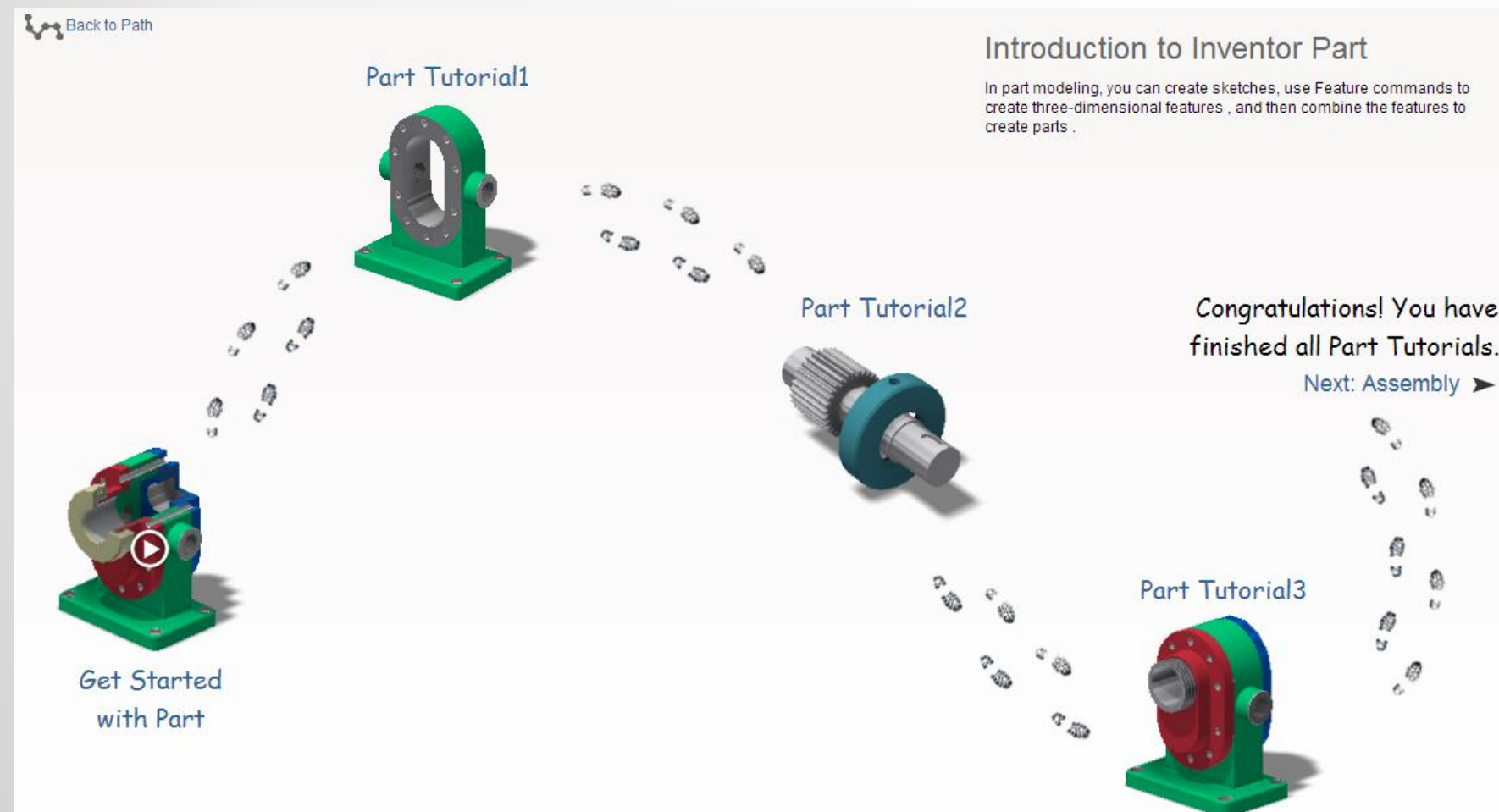
Guides you through  
learning the basics



# Interactive Tutorial Enhancements

Used survey data to target improvements

- 12 new tutorials with complete end to end workflow
- Progress tracking
- Improved authoring process



# Autodesk Knowledge Network Learning Path

- Access from the Help menu
- Enables visual exploration

Would you want ability to customize this for your learning needs?

The screenshot displays the Autodesk Inventor Learning Path interface within a web browser. The browser's address bar shows the URL `akn.autodesk.com/maps/ENU/99994#n=2111111`. The page title is "Autodesk Inventor Learning Path" and the user is logged in as "Paul Normand".

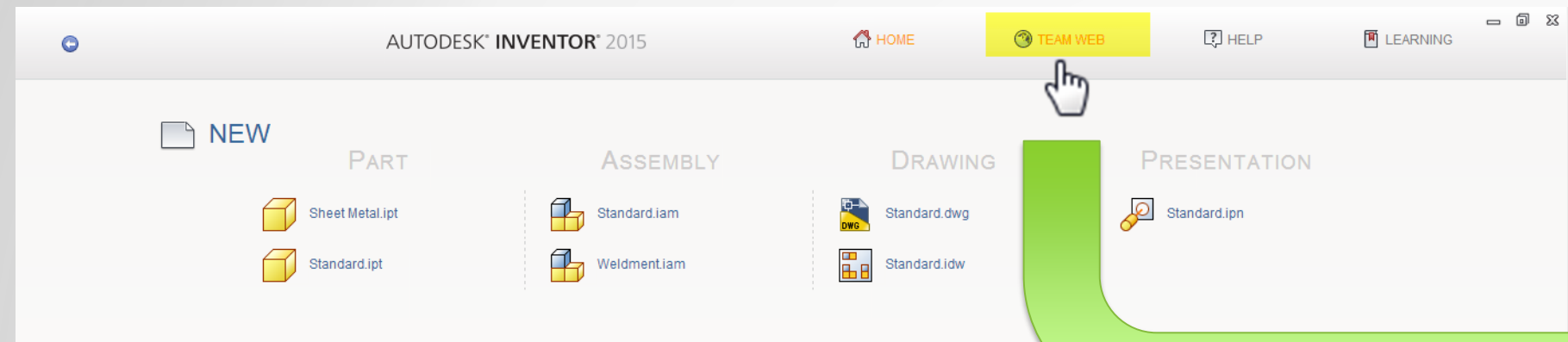
The interface is organized into two main sections:

- Part Modeling**
  - Essentials** (0 of 11 read)
    - Part Creation - Essentials Video (0 likes)
    - Primitive shape creation (0 likes)
    - Sheet metal parts (1 likes)
    - Part modeling environment - Overview (0 likes)
    - Single Body Parts - Overview (1 likes)
- Part Features** (0 of 9 read)
  - Features Overview (1 likes)
  - Getting Started with Sketched Features (0 likes)
  - Getting Started with Placed Features (0 likes)
  - Direct Manipulation - Overview (0 likes)
  - Features and feature termination (0 likes)

Each module card includes a representative image, a title, and a like count. Navigation arrows are visible between the module cards in each section.



# Team Web (what is it?)

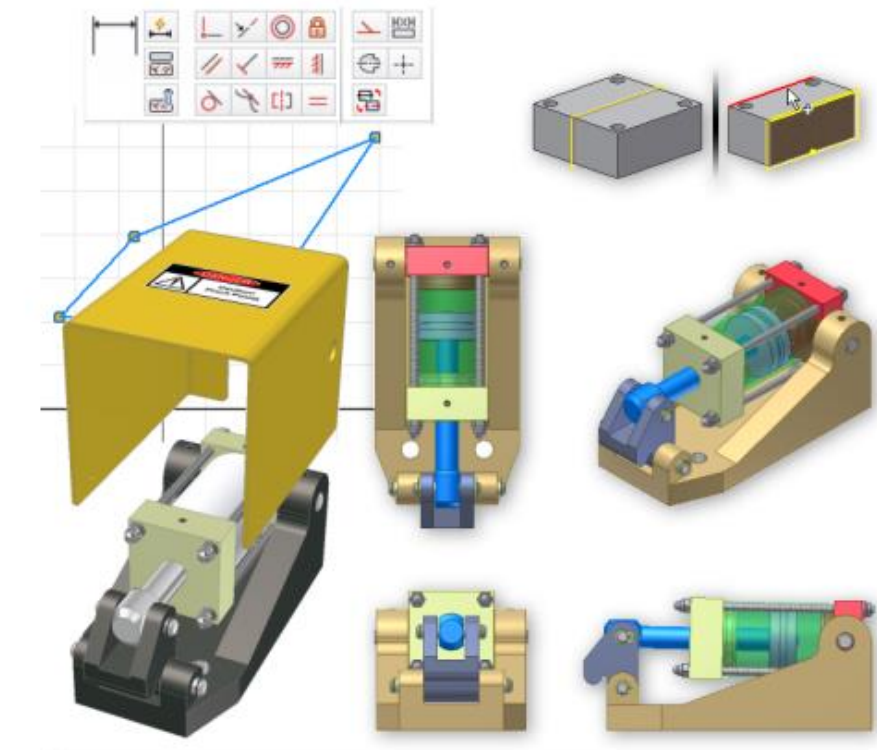
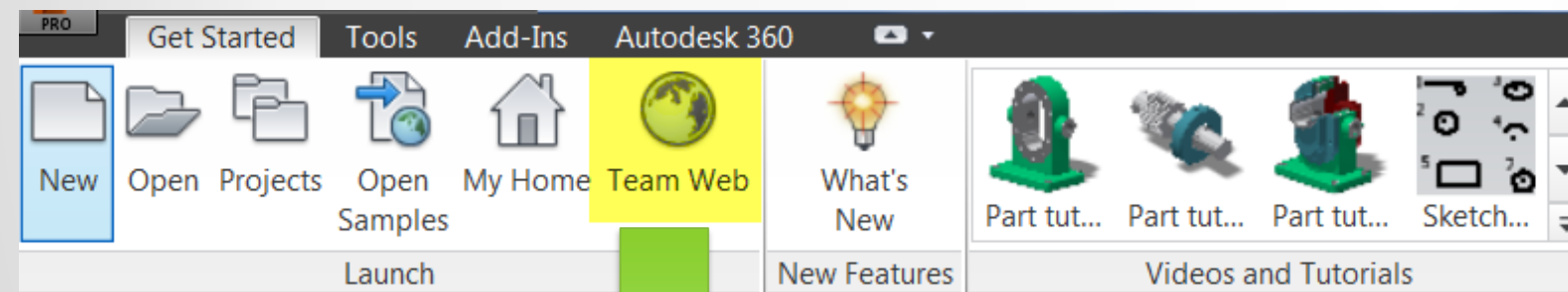


## Configure Team Web - You Choose!

Choose Team Web to:

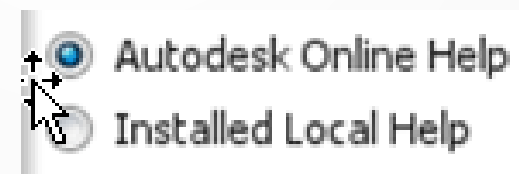
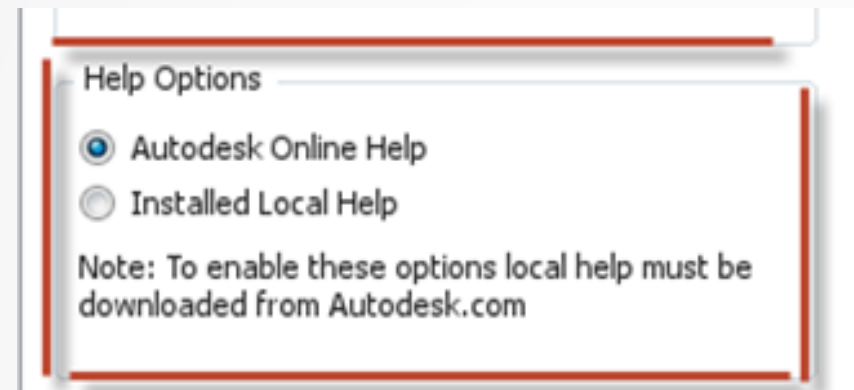
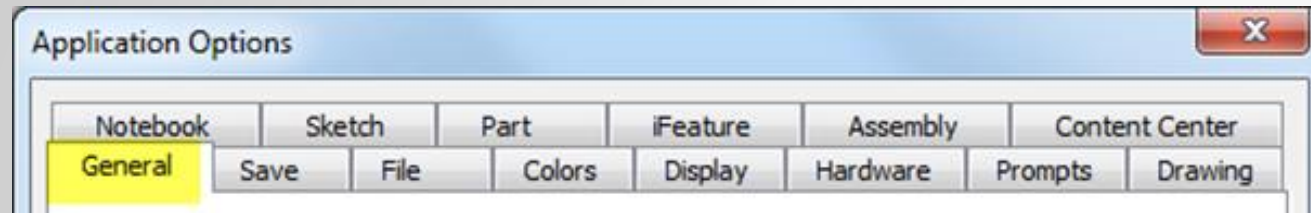
- Link to the HTML page of your choice
- Link to help topics on your intranet
- Link directly to Inventor web based tutorials

[Click here for configuration instructions](#)





# New UI control for Online / Offline



**Greyed out if local help is not installed**

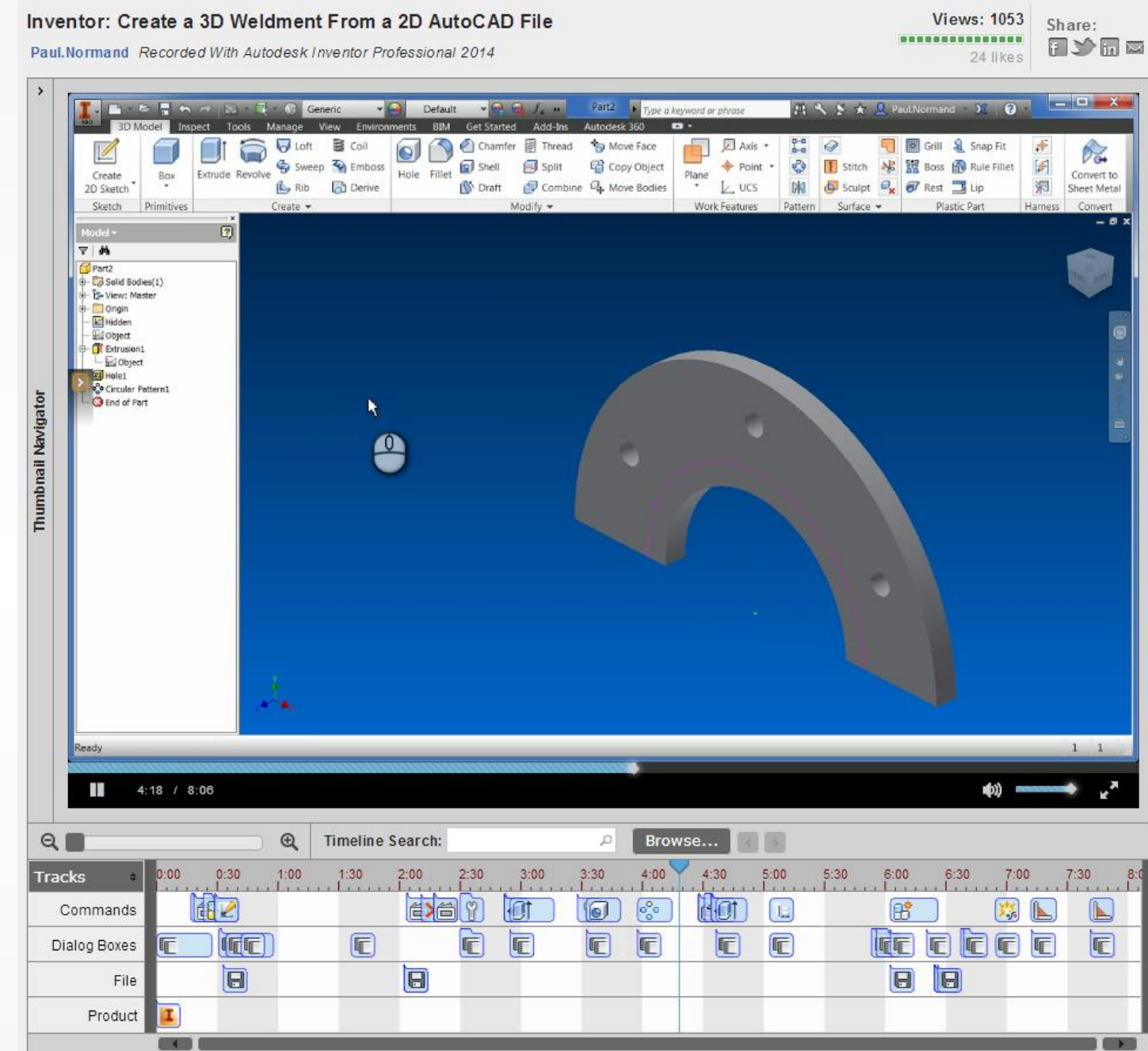
# Chronicle

An easy and intuitive tool to record and share a video tutorial with richly-detailed information about the features used

Inventor Labs release



<http://labs.autodesk.com/utilities/chronicle>



# Did we hit the mark?

**If we could give you ONE thing to improve learning, what would that be?**

# Of everything we discussed today.....

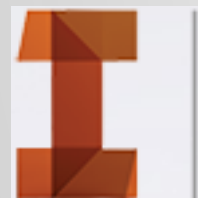
- What will be most useful?
- What does it solve for you?



# Action for you – we listen! We need your feedback

Share your ideas of how to improve Inventor with the Development team

<http://forums.autodesk.com/t5/Inventor-IdeaStation/idb-p/v1232>



INVENTOR IDEASTATION

