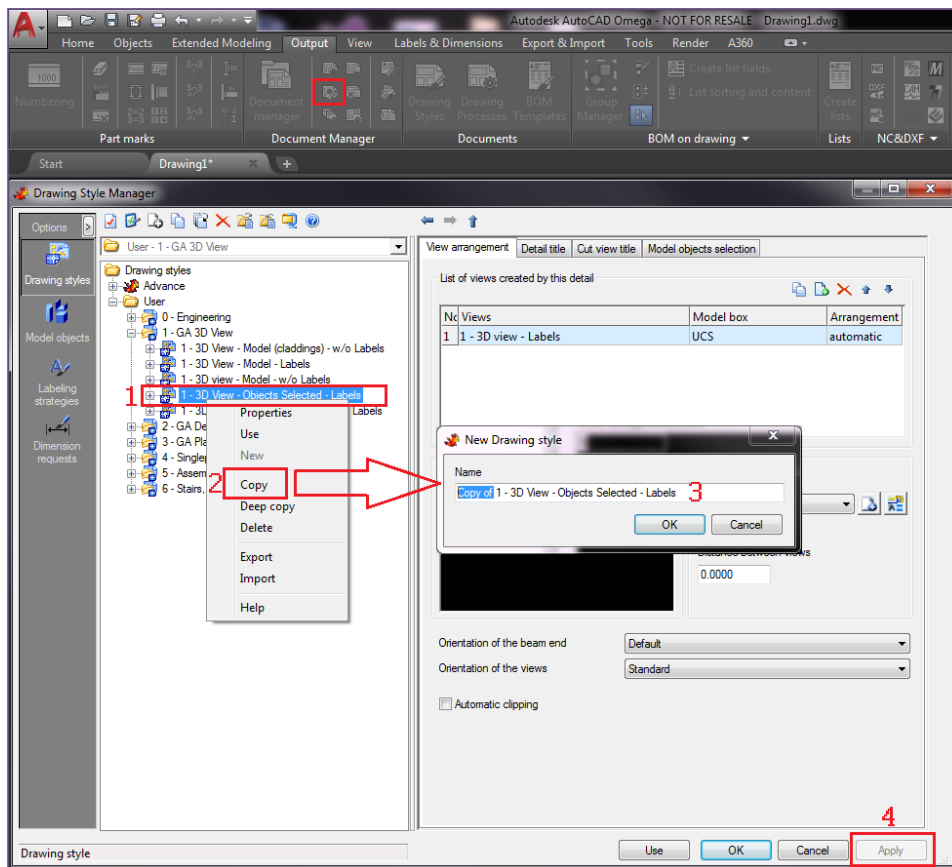


# Advance Steel 2017: Hands-on for Advance Customization in Drawing Styles

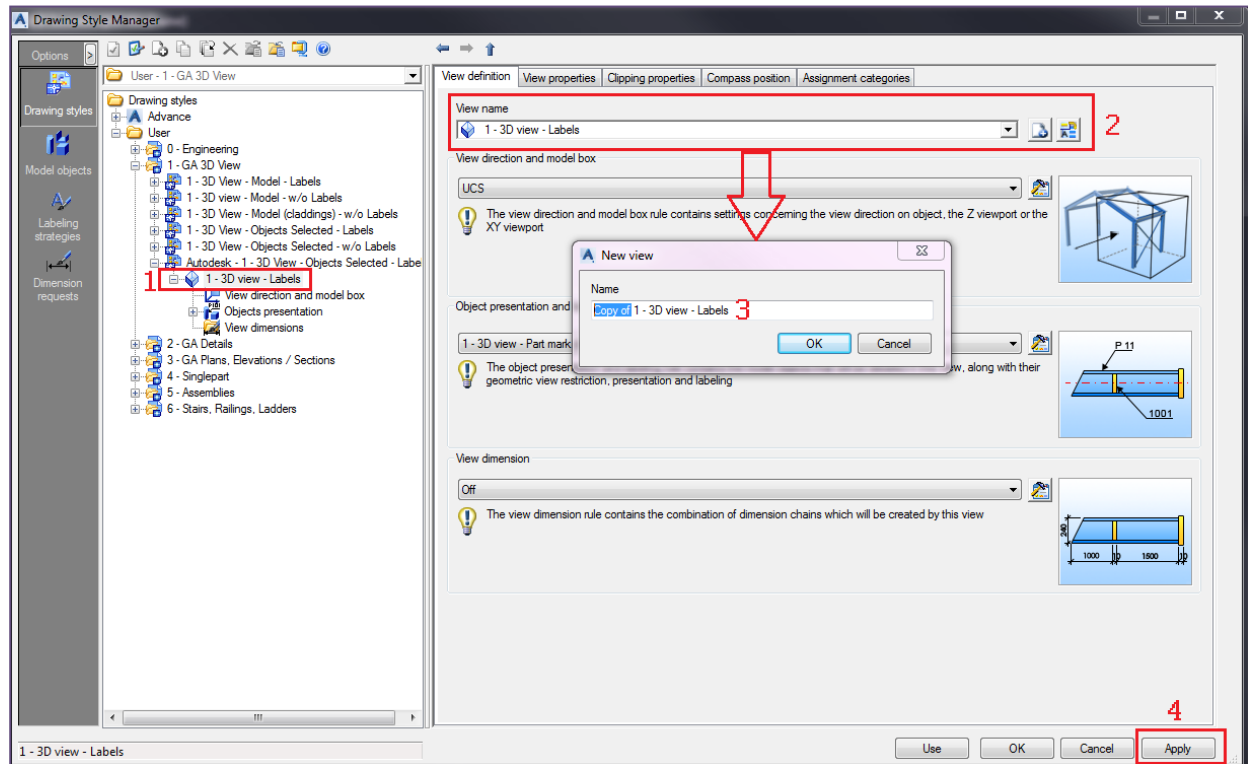
## Beam alignment information in object label and continuous leader lines

### Steps to modify a Drawing Style

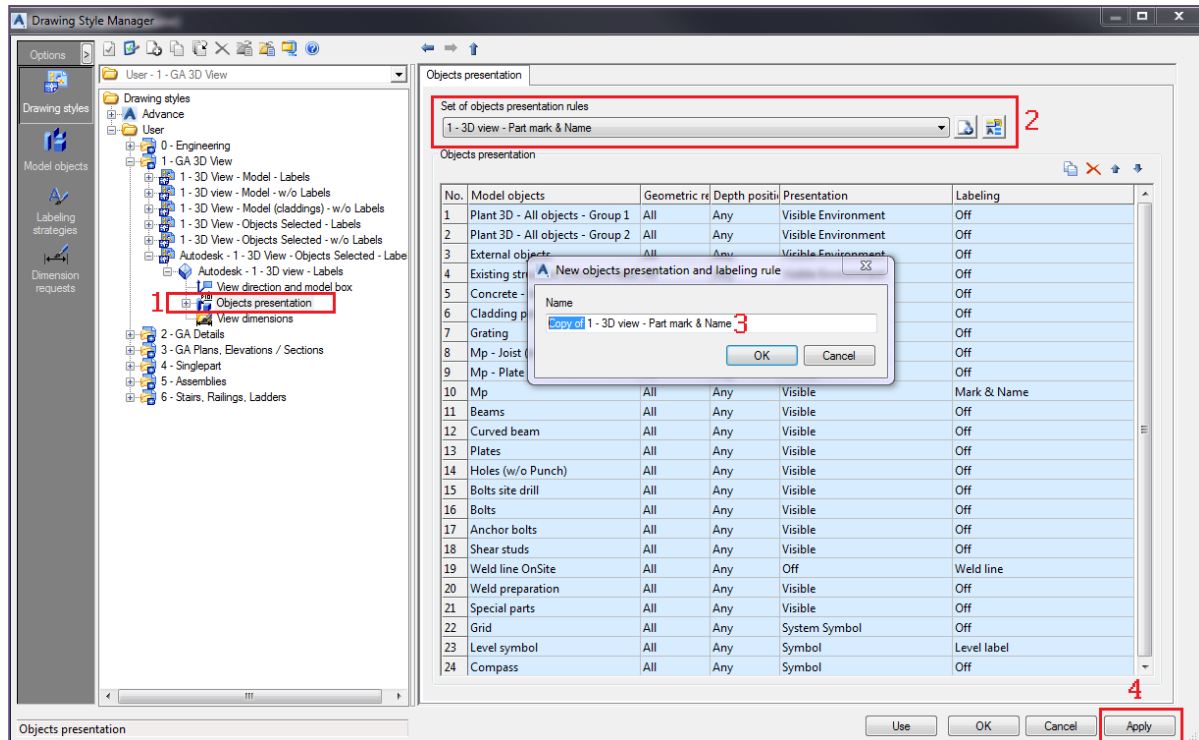
- Open the Drawing Style Manager
- Expand the tree panel and select an existing Drawing Style  
(In this exercise you will select the following Style:  
1-GA 3D View → 1-3D View – Objects Selected – Labels)
- Right click on it and select the option Copy
- Type the name of the new Drawing Style : Autodesk (instead of Copy of) and press OK
- Then press Apply



- In the tree panel select the sub-style 1-3D view – Labels
- To set a proper name of the view use the button “New” next to the “View name” field from Properties Panel
- Type the name of the new sub-style: Autodesk (instead of “Copy of”) and press OK
- Then press Apply

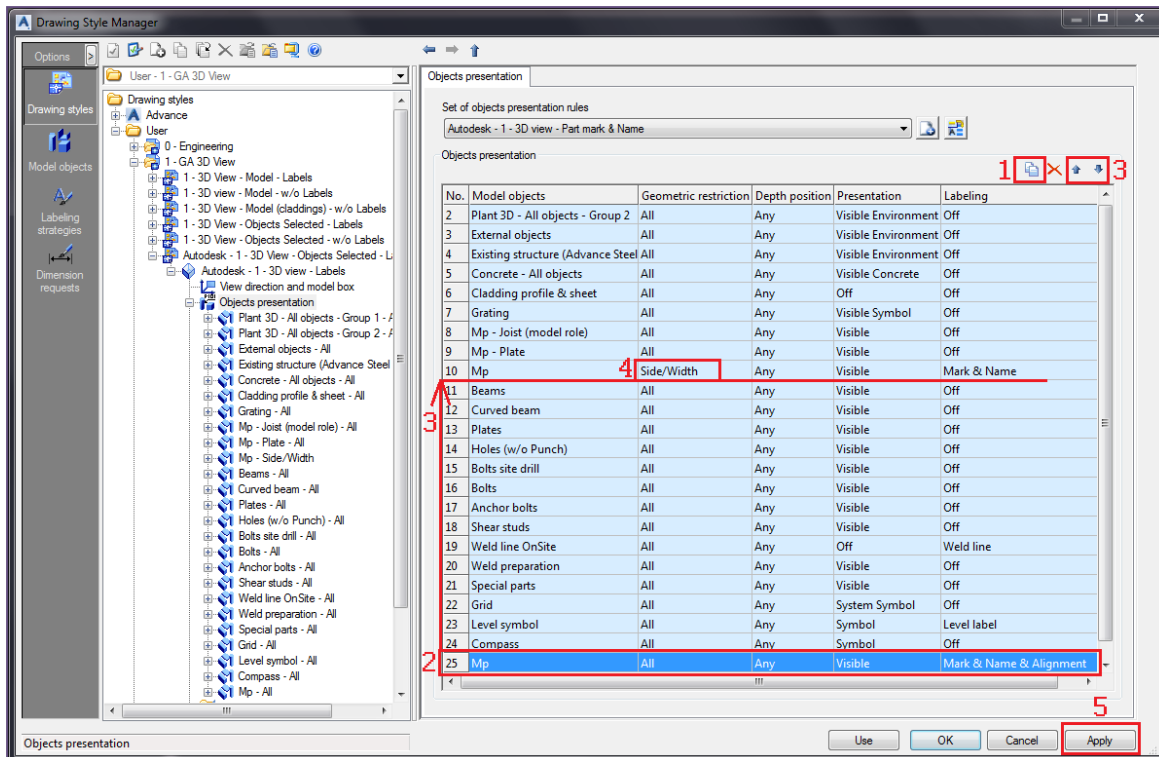


- To set a proper name for the sub-style rules use the button “New” next to the “Set of objects presentation rules” field from Properties Panel
- Type the name of the new sub-style rules: Autodesk (instead of “Copy of”) and press OK
- Then press Apply



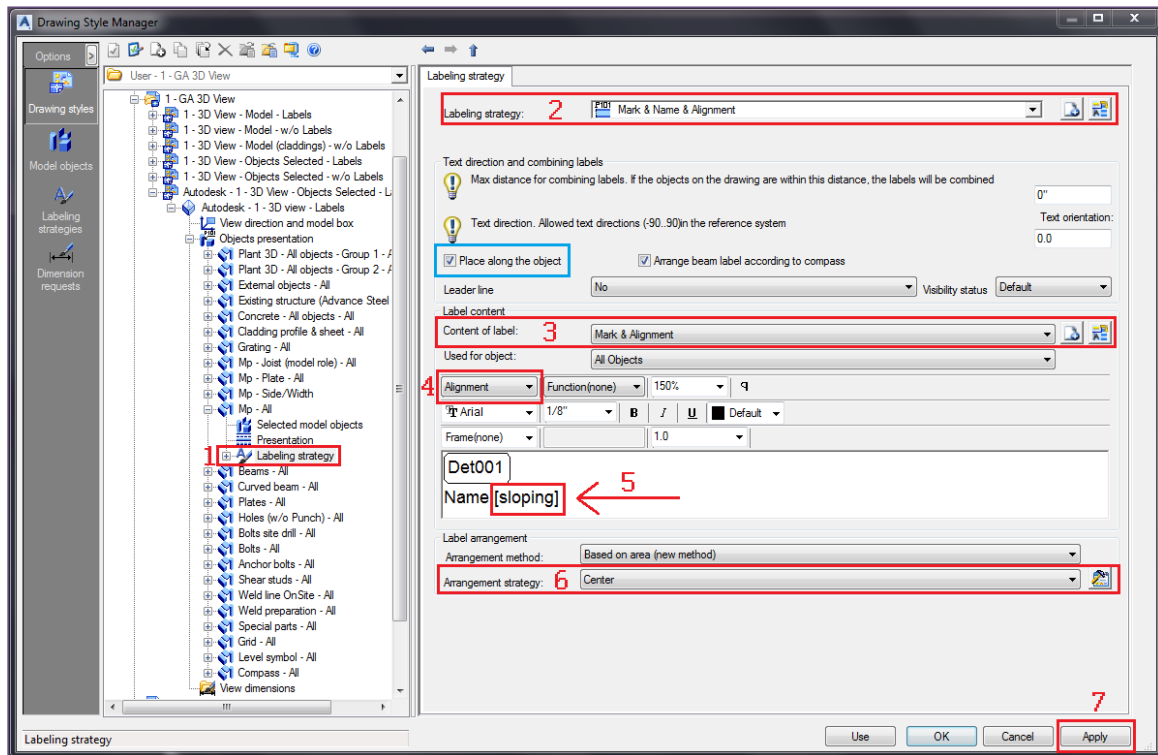
Finish the customization of the new created Drawing Style in the Object presentation:

- To add a new object presentation use the button “Add a new object presentation”
- At the bottom of the table you will see a new line that was created
- Change the option for each table as following:
  - Model objects → MP
  - Geometric Restriction → All
  - Depth position → Any
  - Presentation → Visible
  - Labeling → Mark & Name & Alignment
- Using the “Move up selected object presentation” you will be able to move the new created line right below line number 10.
- At the line 10 change on “Geometric Restriction” the option and select “Side/Width” restraining the rule only for side/with view.
- Then press Apply



Before using the new modified Drawing Style, check the options in “Labeling Strategy”:

- Labeling Strategy → Mark & Name & Alignment
- Content of label → Mark & Alignment
- Token → Alignment
- Arrangement → Center
- Then press Apply



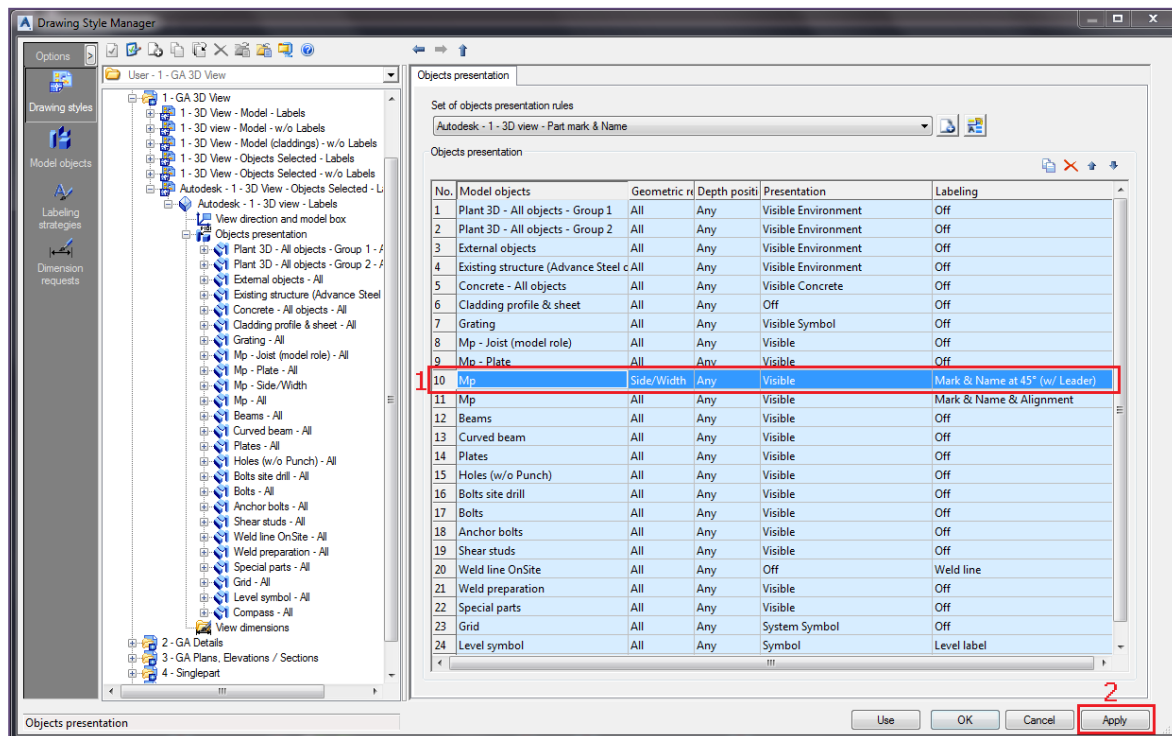
## Continuous leader lines for labels at 45 degrees

### Steps to modify a Drawing Style

In this exercise you will expand the tree panel and select the former Drawing Style created: Autodesk - 1-3D View – Objects Selected – Labels → Autodesk - 1 - 3D View -Labels → Objects presentation.

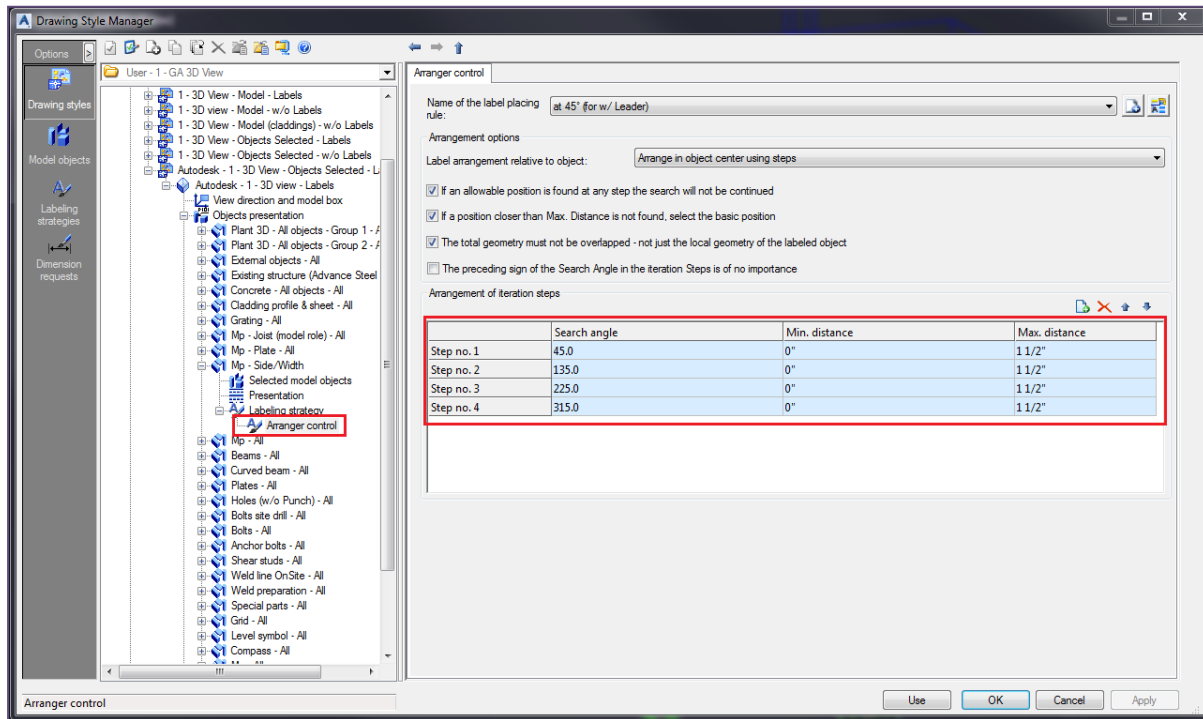
In the Object presentation table change the “Labeling” option for line 10 table as following:

- Mark and Name → Mark and Name at 45° (w/ Leader)



Before using the new modified Drawing Style, check the options in “Labeling Strategy”:

- Labeling Strategy → Arranger control
- Under the Arranger of iteration steps (Example 13) you will observe the following:
  - Search angle
  - Mini distance
  - Max distance
- Any modifications in this area will affect the result for the continuous leader line.

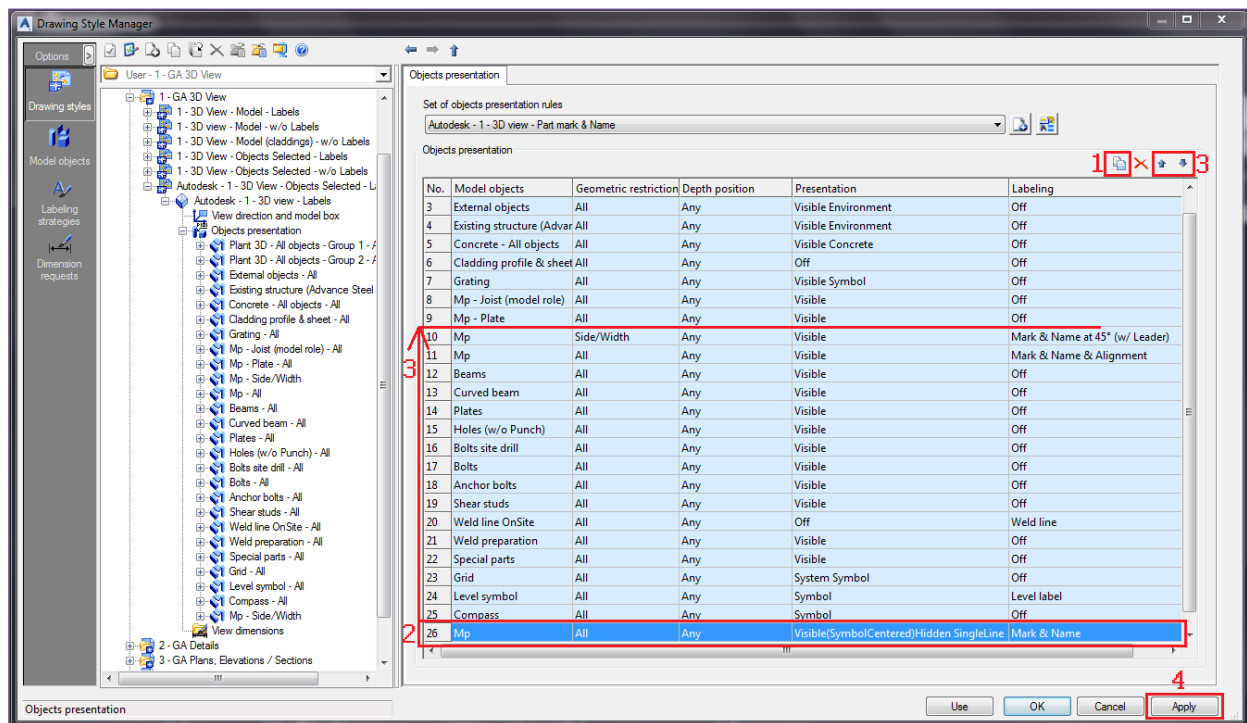


## Improved Beam symbol object

### Steps to modify a Drawing Style

In this exercise you will expand the tree panel and select the former Drawing Style created: Autodesk - 1-3D View – Objects Selected – Labels → Autodesk - 1 - 3D View -Labels → Objects presentation.

- To add a new object presentation use the button “Add a new object presentation”
- At the bottom of the table you will see a new line that was created
- Change the option for each table as following:
  - Model objects → MP
  - Geometric Restriction → All
  - Depth position → Any
  - Presentation → Visible(SymbolCentered)Hidden SingleLine
  - Labeling → Mark & Name
- Using the “Move up selected object presentation” you will be able to move the new created line right below line number 9.





Before using the new modified Drawing Style, check the options in “Presentation”:

- Next to “Definition of the presentation rule”(Example 17) you will observe the following:
  - Element → Body Visible
  - Color → Default
  - Representation → SymbolCentered

