

Infrastructure Symposium Breakout: Did We Design It Right? Utility Project Conceptual Planning and Detailed Design

Moderator: Alan Saunders

Senior Industry Manager, Utilities
Autodesk

Are you ready to RUMBLE?

Who is in the room? A passionate, growing community ready to share best practices. Make new contacts, share best practices, find connections.



Advanced Connections Inc.
Anchorage Municipal Light and Power
Arizona Public Service
Athabasaca Oil Corporation
Bolton & Menk, Inc.
Brown and Caldwell
Bureau of Reclamation
Chelan County PUD No.1
City of Alexandria
City of Tacoma
Duke Energy Progress
Empire District Electric
Farmington Electric Utility System
Filippon Engenharia
FIRM ENGINEERING
Freese and Nichols, Inc.
Geonius
Grady Consulting, L.L.C.
GVEA

HBE Corporation
HDR
Independence Power and Light
Lincoln Electric System
Nashville Electric Service
Northeast Utilities
NV Energy
PacifiCorp
Phelan Pinon Hills Community
Services District
Pictometry
PNM
Reykjavik Energy
SA Power Networks
San Diego Gas & Electric
Seattle City Light
So. Cal. Edison
Stantec
Structor Uppsala

Agenda - Utility Planning and Design Roundtables

Session UT6637 Monday 3-4PM Islander C

Time	Topic	Speakers / Tale Leaders
3:00	Introduction	Alan Saunders, Autodesk
3:05	Topic Introductions <ol style="list-style-type: none"> 1. Reality Capture & Existing Conditions (Underground facilities) 2. Reality Capture & Existing Conditions (Overhead lines) 3. Engage the Community for Permitting & Approvals (Using InfraWorks) 4. AutoCAD Utility Design Update 5. Substation Consortium Update 6. Automationforce Substation Design Suite Update 7. Engineering Design Integration 8. Spatial Data Integration with Design 9. BIM Business Cases 	<p>Everett Clary and Forrest Roy, Anchorage MLP, Rick Johnston, Autodesk</p> <p>Cole Smith, Southern California Edison, Pat Byrne, Autodesk</p> <p>David Lawrence, URS, Ian Matthew, Autodesk</p> <p>Dan Leighton, DL Consulting, Walt Smith, Autodesk</p> <p>Michael Goins, Duke Energy, David Milks, Autodesk</p> <p>Trevor Scullion, Automationforce</p> <p>Ram Ramalingam, Autodesk</p> <p>Pat Reid, SBS</p> <p>Alan Saunders, Autodesk</p>
3:20	Roundtable Discussions	All
3:50	Wrap Up and Observations	Alan Saunders, Autodesk
3:55	Session close	

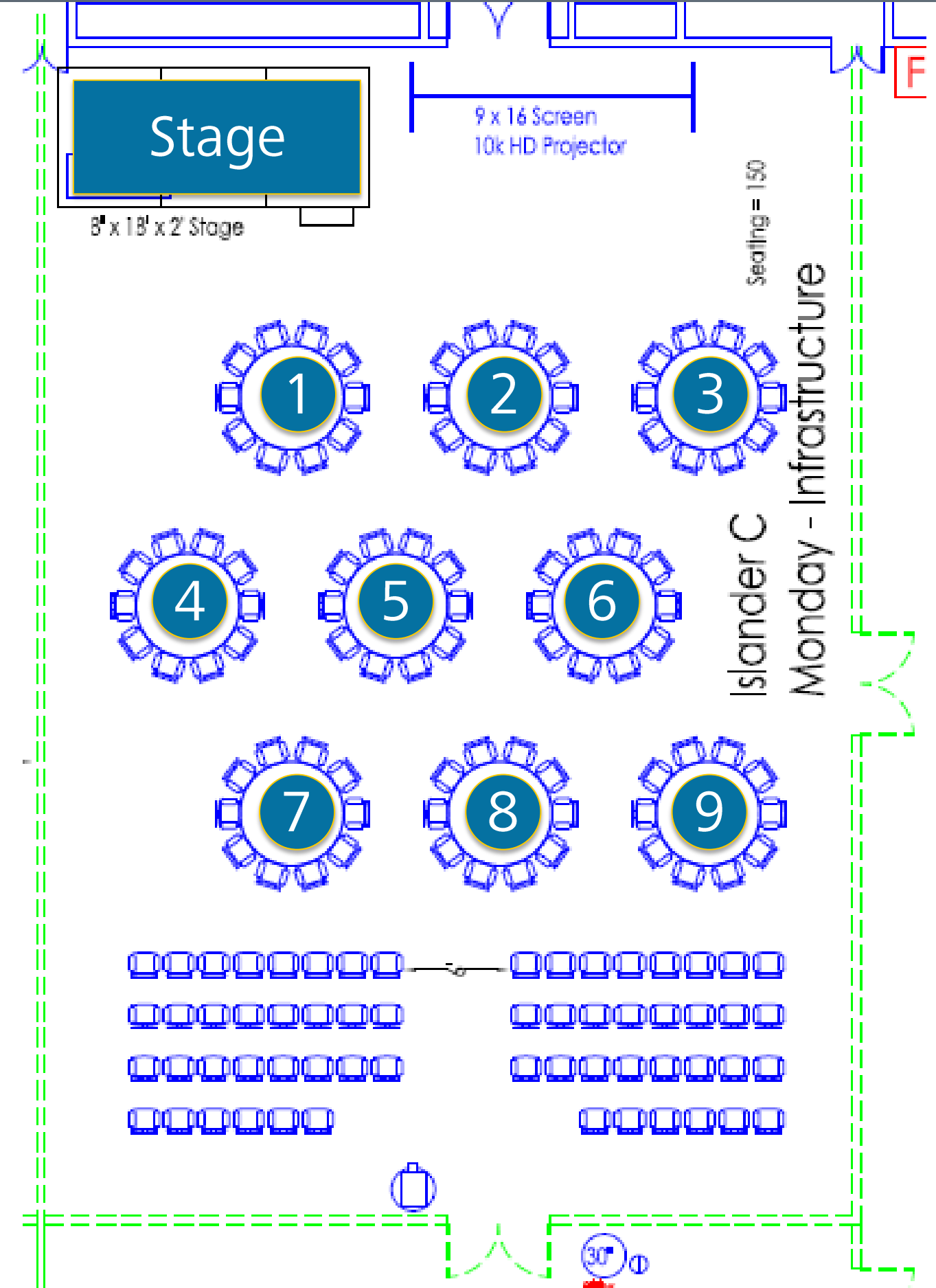
Format

Process:

- Choose a table according to topic
- Please – spread yourselves around and balance the tables

Discussion:

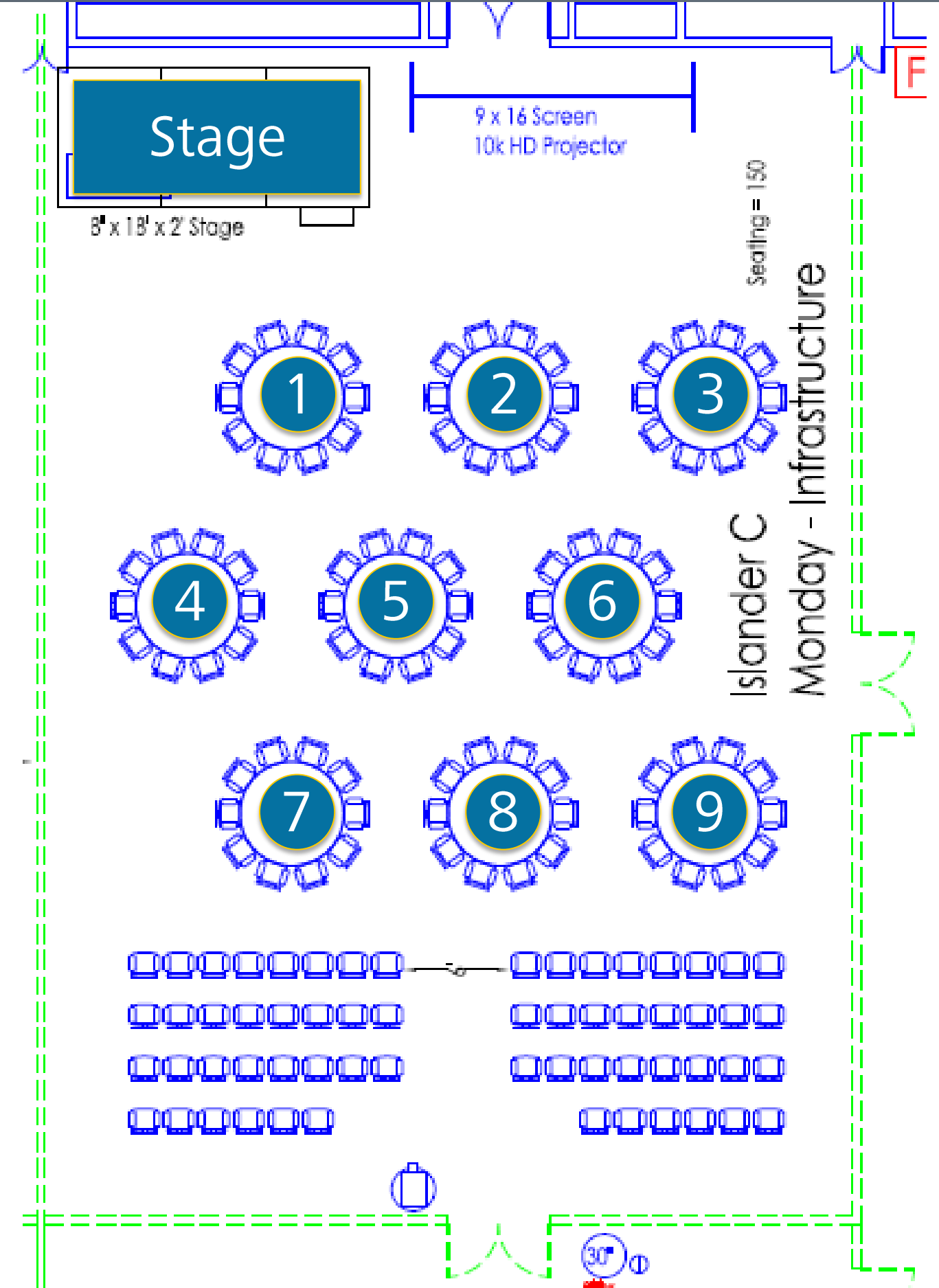
- Get to know each other – who you are, where you work, and why are you here
- What are your experiences with the topic?
- Business issues
- Process issues
- Technical issues
- Best practices



Format

Topics

1. Reality Capture & Existing Conditions (Underground facilities)
2. Reality Capture & Existing Conditions (Overhead lines)
3. Permitting & Approvals (Using InfraWorks to Engage the Community)
4. AutoCAD Utility Design Update
5. Substation Consortium Update
6. Automationforce Substation Design Suite Update
7. Technical Integration Topics
8. Spatial Data Integration with Design
9. Business Cases for BIM



Roundtable 1: Reality Capture & Existing Conditions

Leads: Everett Clary and Forrest Roy, AMLP, Rick Johnston, Autodesk

Paper or non-existent data on UG facilities? Need models?

Learn more about what Anchorage Municipal Light & Power has done, and share your use cases and challenges for creating models of UG facilities. Likely topics include...

- Business case for better information on UG facilities
- What is the status of your data today
- Approaches for condition capture and lessons learned
- Now we have the data, how do we use it?



Roundtable 2: Reality Capture & Existing Conditions

Leads: Cole Smith, SCE, Pat Byrne, Autodesk

Using LiDAR to create models of OH T&D?

Learn more about what SCE is doing, and share your use cases and challenges for creating models of existing OH facilities. Likely topics include...

- The stakeholders – regulators, other departments, environmental groups, other utilities...
- Level of data accuracy required at different stages
- Approaches for condition capture and lessons learned
- Turning data into information



Roundtable 3: Engage the Community

Leads: David Lawrence, URS, Ian Matthew, Autodesk

Increasing expectations from project stakeholders? Need better visualizations to engage and communicate?

Learn how URS has used InfraWorks on large, highly visible utility projects. Share your use cases and challenges for creating compelling visuals for these projects. Likely topics include...

- Business case for better community engagement
- How do you communicate project intent today?
- Data sources and techniques
- Lessons learned



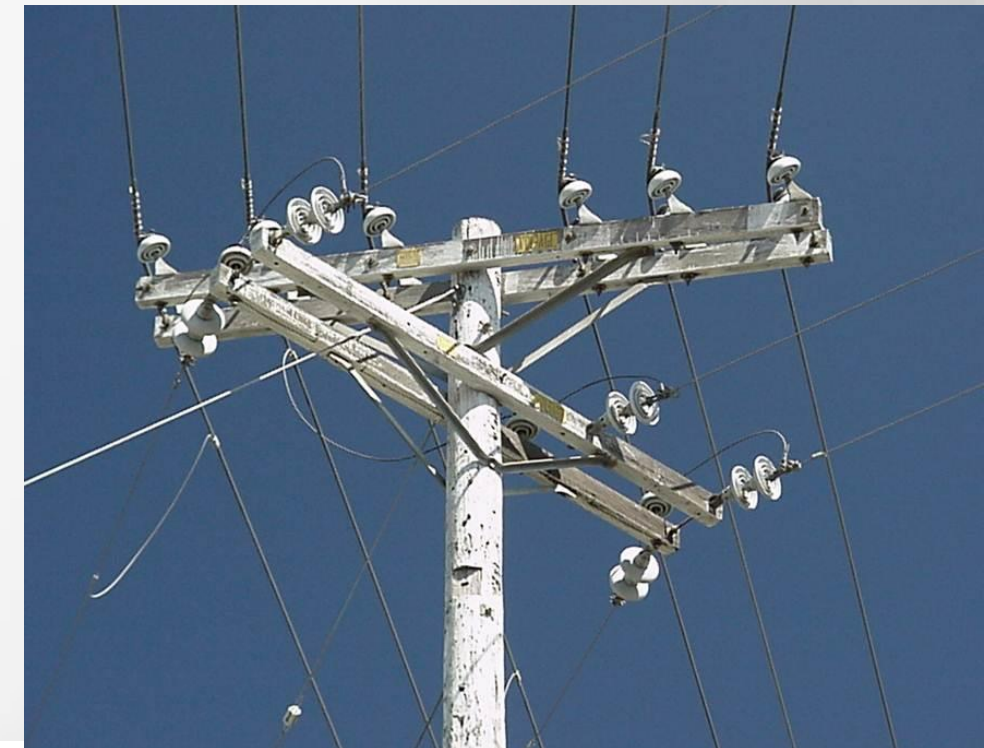
Roundtable 4: AutoCAD Utility Design

Leads: Dan Leighton and Walt Smith

Considering AUD? Implementing AUD? In deployment?

Every month we learn of more utilities moving forward with AUD. Whether you're just kicking the tires or if you've been working with AUD for a long time, please join us for this roundtable session. Likely topics include...

- What's needed to move to AUD
- Practical implementation strategies
- Approaches for deployment
- AUD integration



Roundtable 5: Substation Consortium Update

Chairman: Michael Goins, Duke Energy

Interested in a consortium approach to establish industry standards and share best practices?

Learn about the initiative of several utilities who are deploying the Autodesk substation design solution to establish industry standards, establish best practices, and drive development.

Topics include...

- Why the consortium was formed
- Who is participating
- Group Goals and Charter
- How and when to get involved



Roundtable 6: Automationforce Substation Design Suite Update

Leads: Trevor Scullion, Duke Energy

Considering SDS? Implementing SDS? In deployment?

Every month we learn of more utilities moving forward with SDS. Whether you're just kicking the tires or if you've been working with SDS for a long time, please join us for this roundtable session. Likely topics include...

- Why move to model-based substation design / SDS
- Best practice implementation strategies
- Approaches for deployment
- What should be next



Roundtable 7: Completing the BIM workflow – engineering integration

Leads: Ram Ramalingam

How to get the most out of your workflows by integrating design with existing engineering applications.

To complete designs, many of you use 3rd party tools to validate engineering and enforce certain standards. This session how to plan and execute the right workflow integrations. Likely topics include...

- What 3rd party tools are you using
- Planning workflows and data exchanges
- Practical implementation strategies
- What works and What are the pain points today?



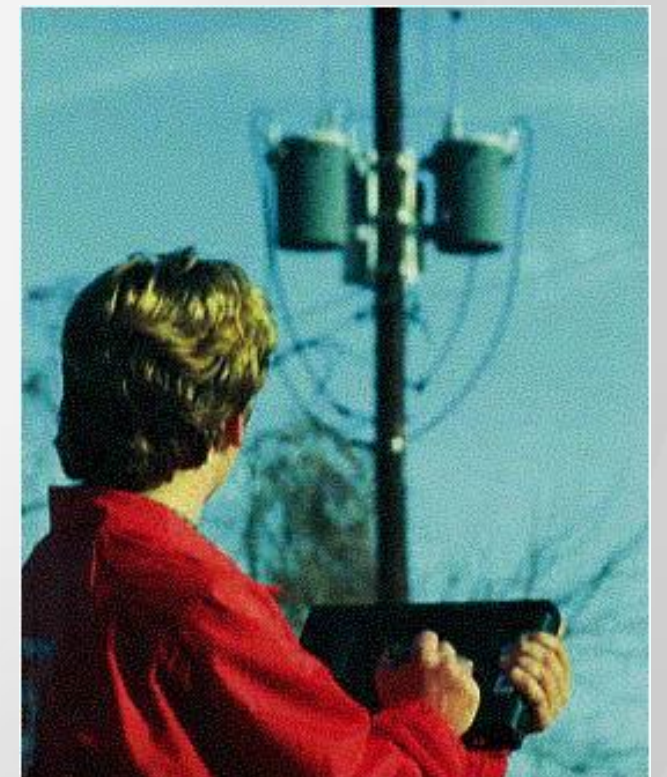
Roundtable 8: Spatial Data Integration with Design

Leads: Pat Reid, Spatial Business Systems

How do you get started with a new design?

To start a new design, better data on what is really in the field will improve design quality and reduce design time. This session will explore how to gather and aggregate various spatial data. Likely topics include...

- Data sources
- Field data collection
- Use cases
- Challenges and best practices



Roundtable 9: Business Cases for BIM

Leads: Step right up

Justifying transformation

Most in the industry agree that the transition to model-based design has begun. What are the business cases to support this transformation? Likely topics include...

- Regulatory drivers
- Project risks – safety, cost, schedule
- Workforce change
- Challenges and best practices

