

# Getting Up To Speed With AutoCAD 2018

Shaun Bryant

Director - CADFMconsultants

Join the conversation [#AULondon](#)



# Welcome!

1. No, I'm ***not*** Lynn – did you notice?
2. Some of you might know me already, right?
3. Yes, that ***IS*** me in the photo
4. And yes, I do wear a scarf (often)

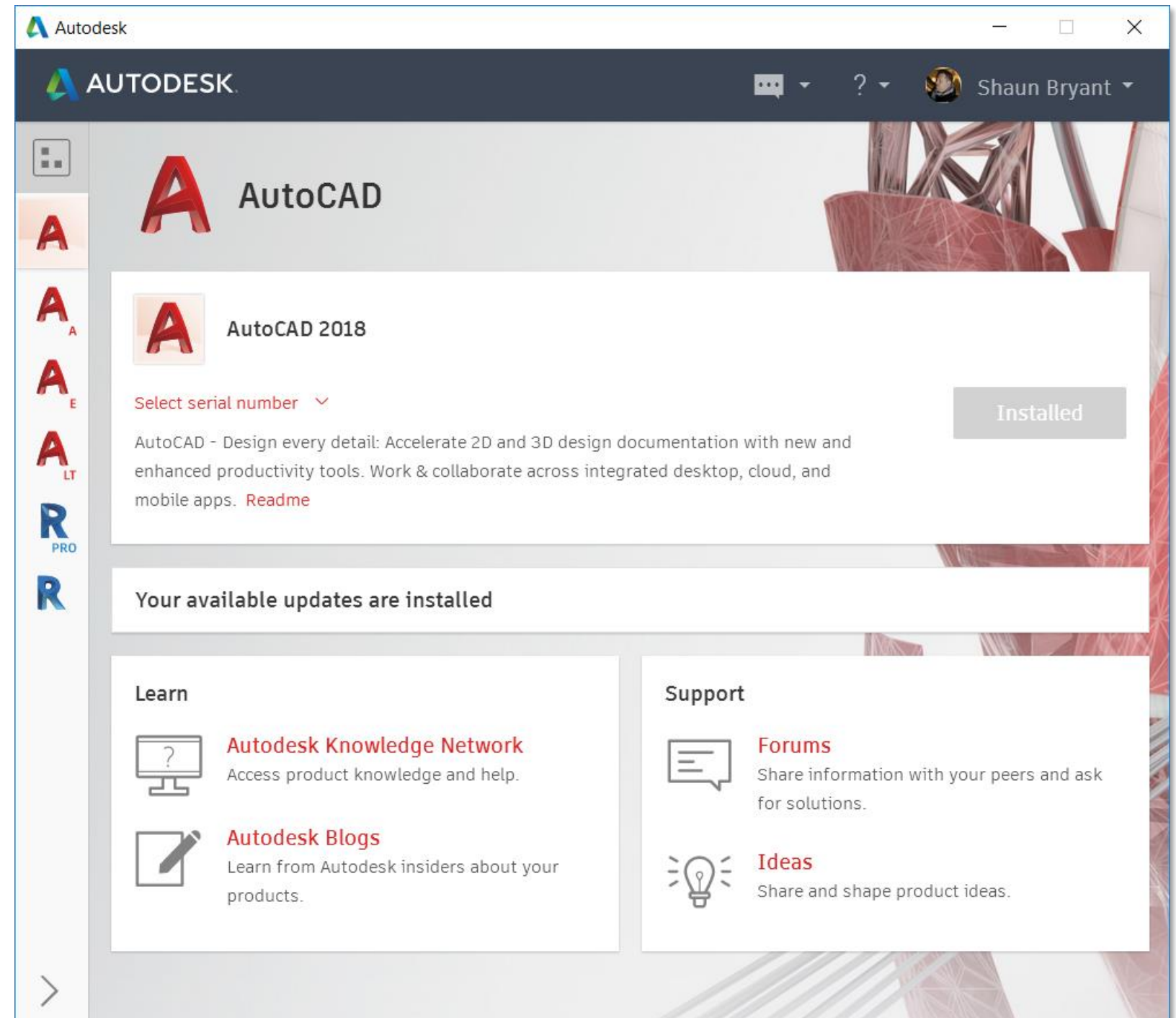


- Shaun Bryant
- Director – CADFMconsultants
- [shaun.Bryant@cadfmconsult.co.uk](mailto:shaun.Bryant@cadfmconsult.co.uk)
- @notjustcad
- [www.cadfmconsult.co.uk](http://www.cadfmconsult.co.uk)
- Author on Lynda.com and LinkedIn Learning [in]structor

SMARTER

# New Features - DISCLAIMER

- This list of new features is **NOT** exhaustive. Due to the nature of the Autodesk subscription model, new features and updates are added at regular intervals!
- I am only a human. These updates seem to be appearing all the time via the Autodesk Desktop App! 😊



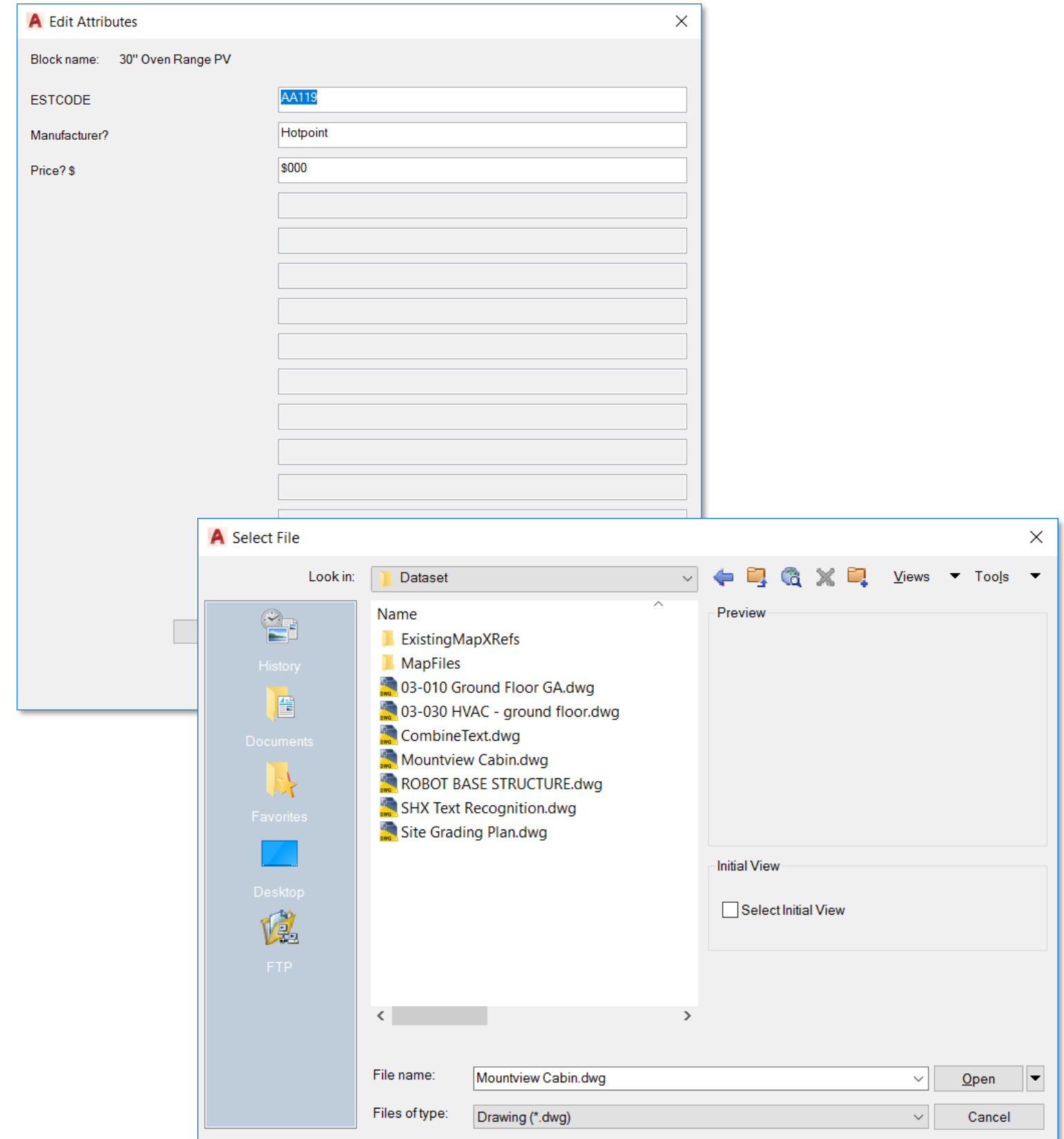




# User Interaction & User Interface

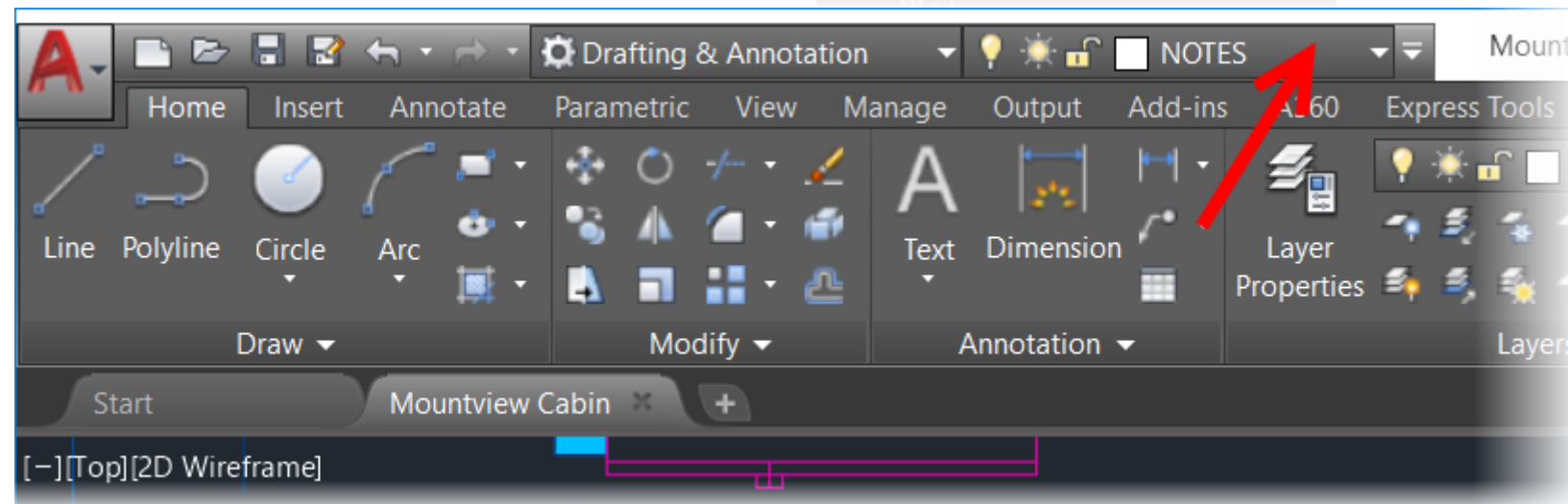
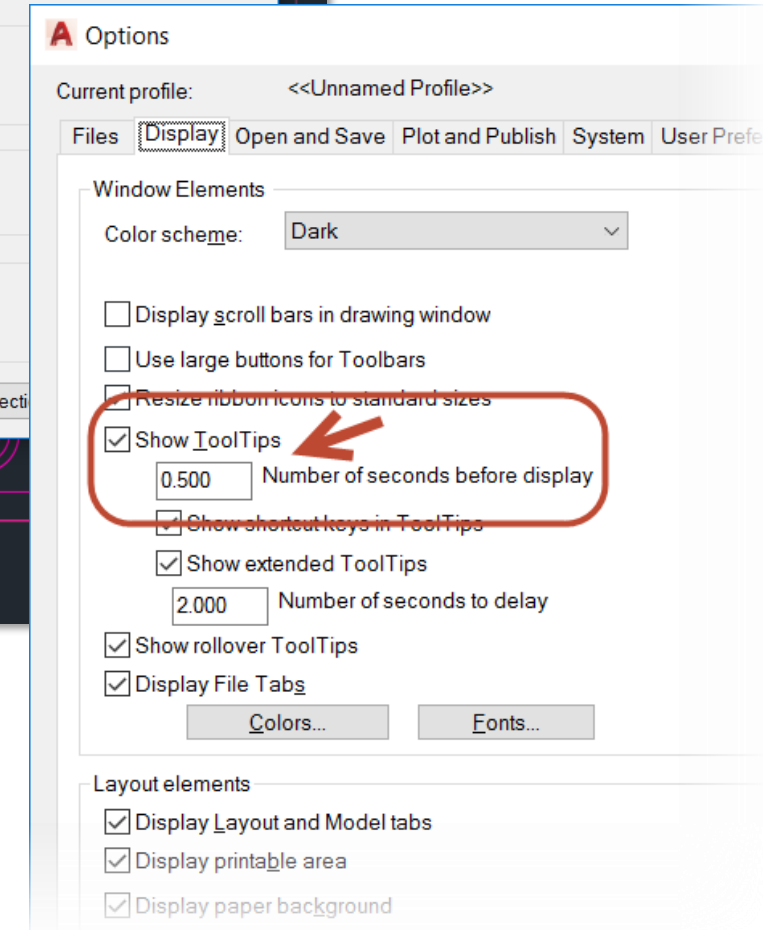
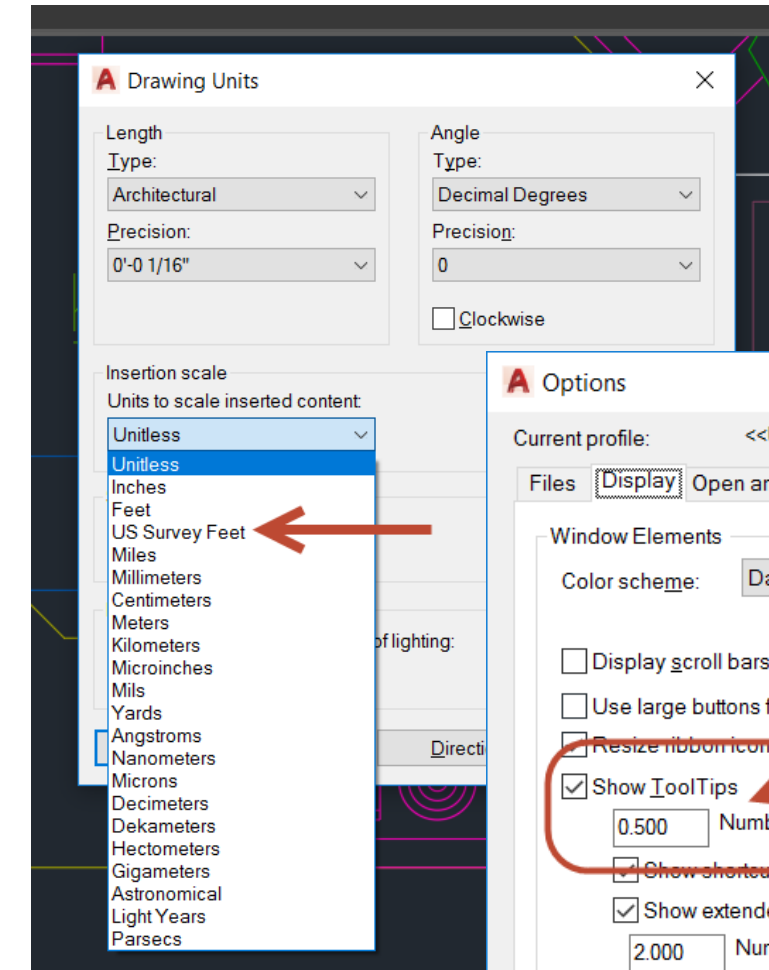
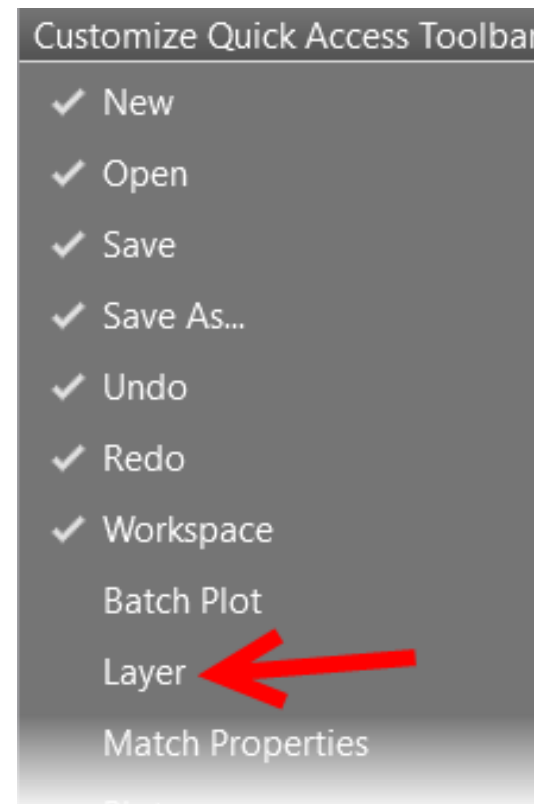
# Dialog Boxes

1. **Size** – bigger by default and resizable (**#3 on the AUGI Wish List**)
2. **ATTEDIT** – Edit Attributes now has a default 15 item list (was 8 items)
3. **File Navigation**– now remembers the previous sort order



# Interface Tools 1

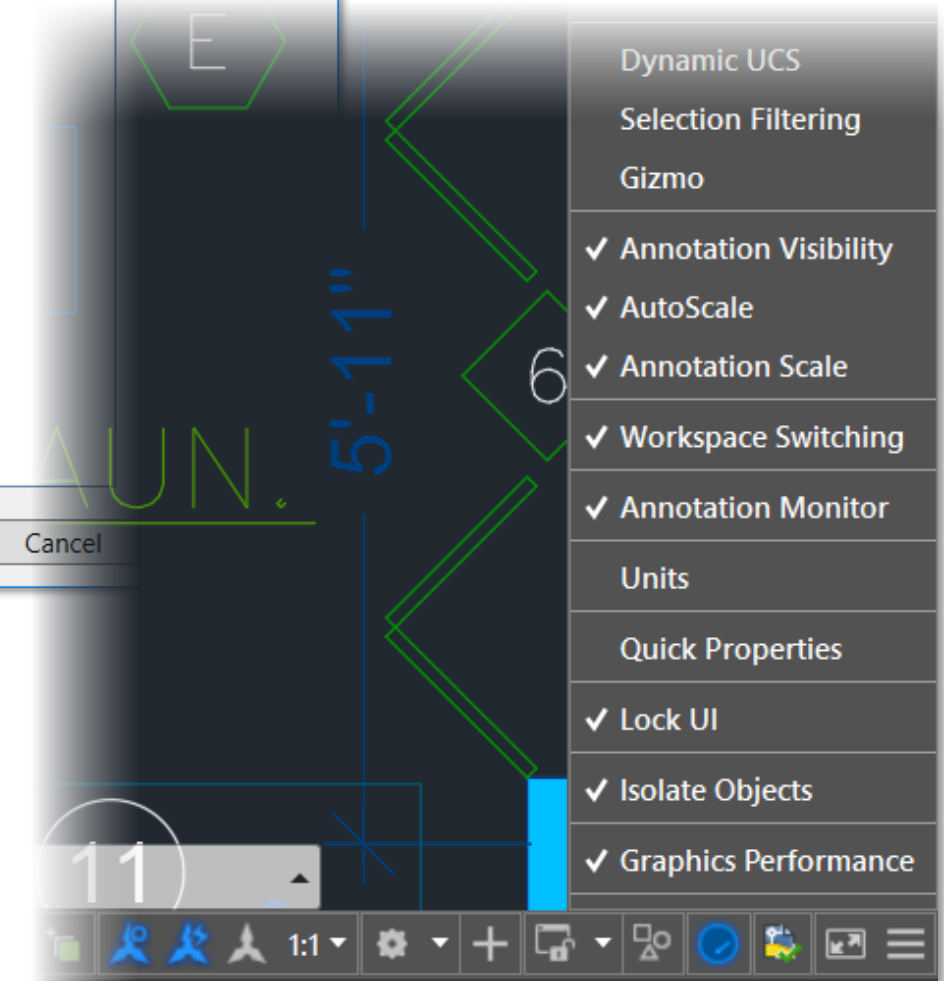
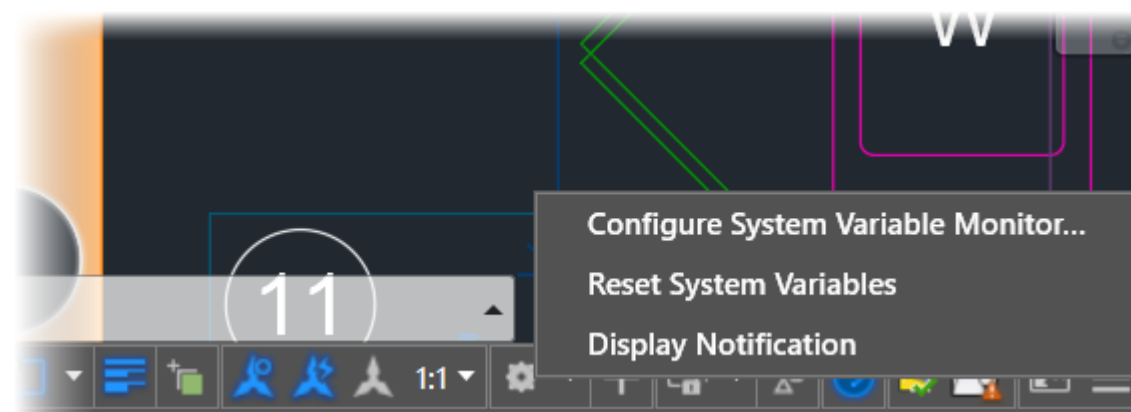
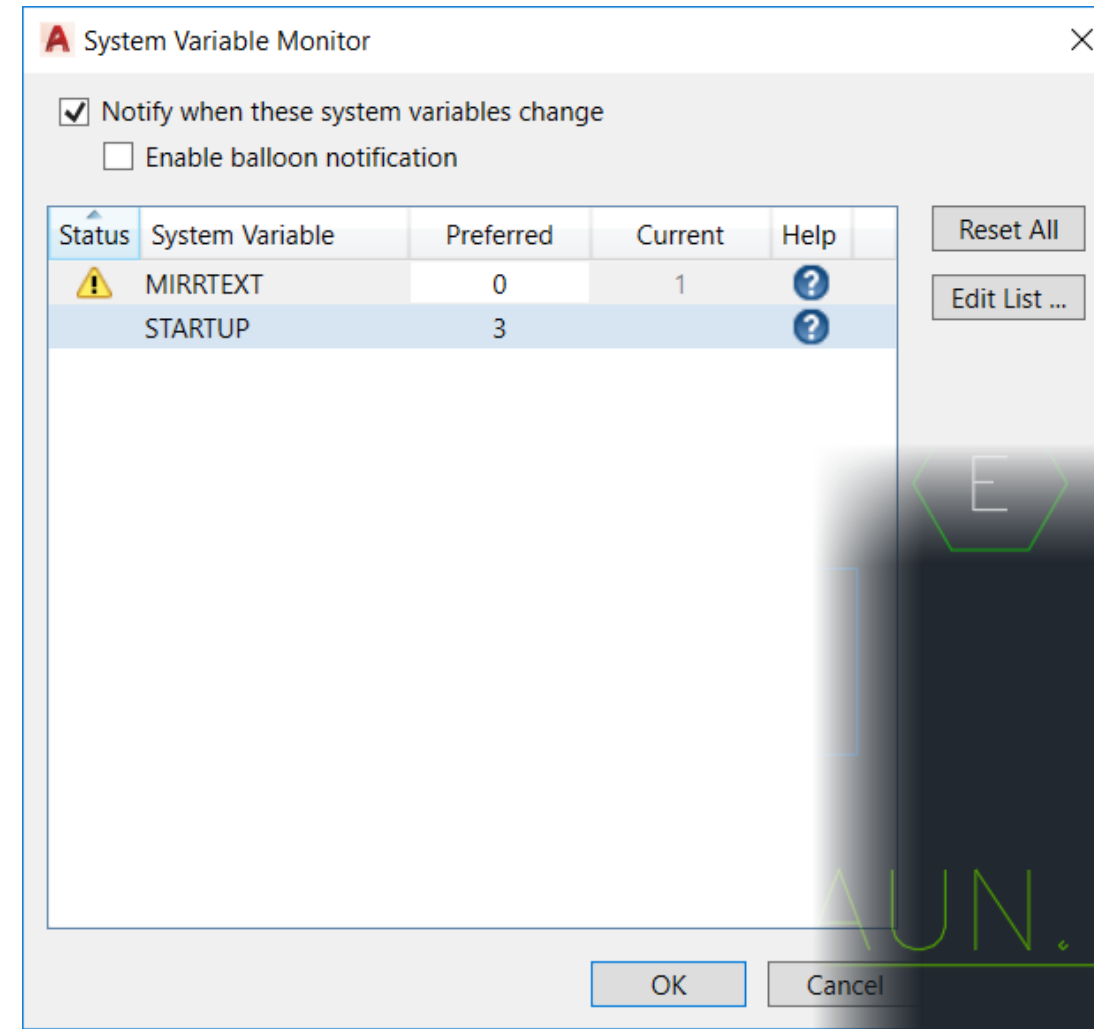
1. **Units** – US Survey Units now included. Just what we need in the UK? (UNITS)
2. **Tooltips** – timing can now be changed (OPTIONS)
3. **QAT** – Layers can now be added to the Quick Access Toolbar





# Interface Tools 2

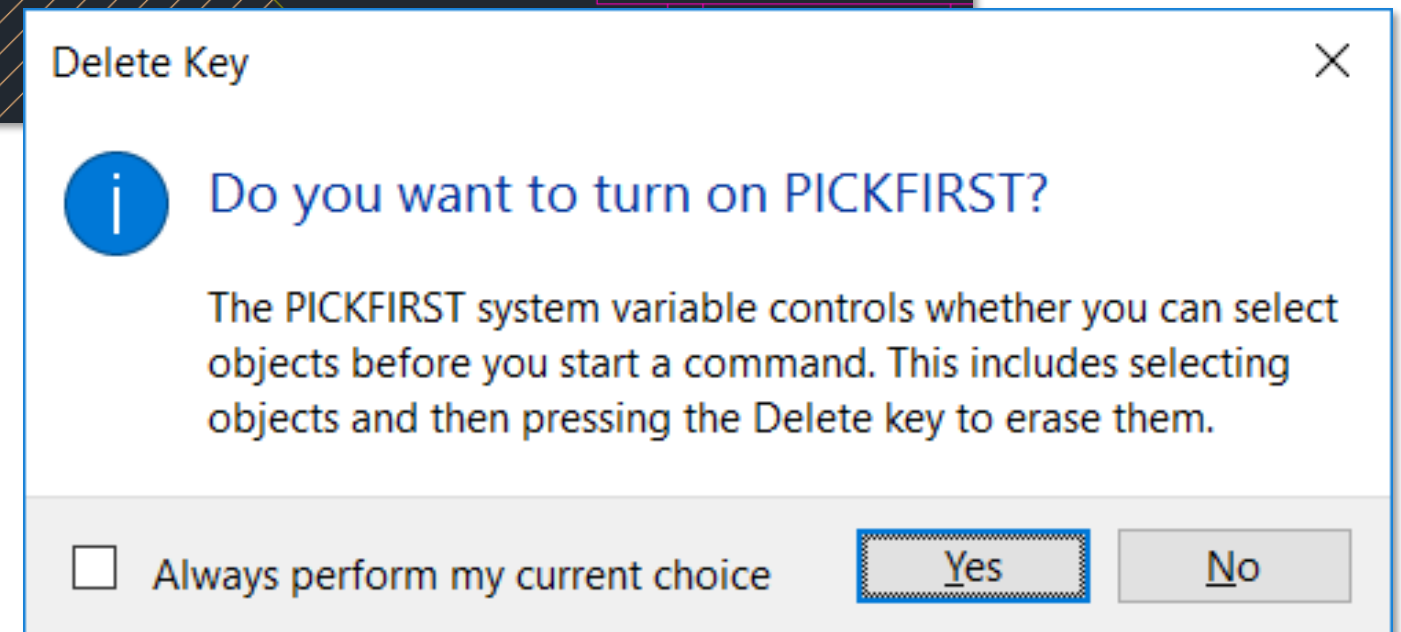
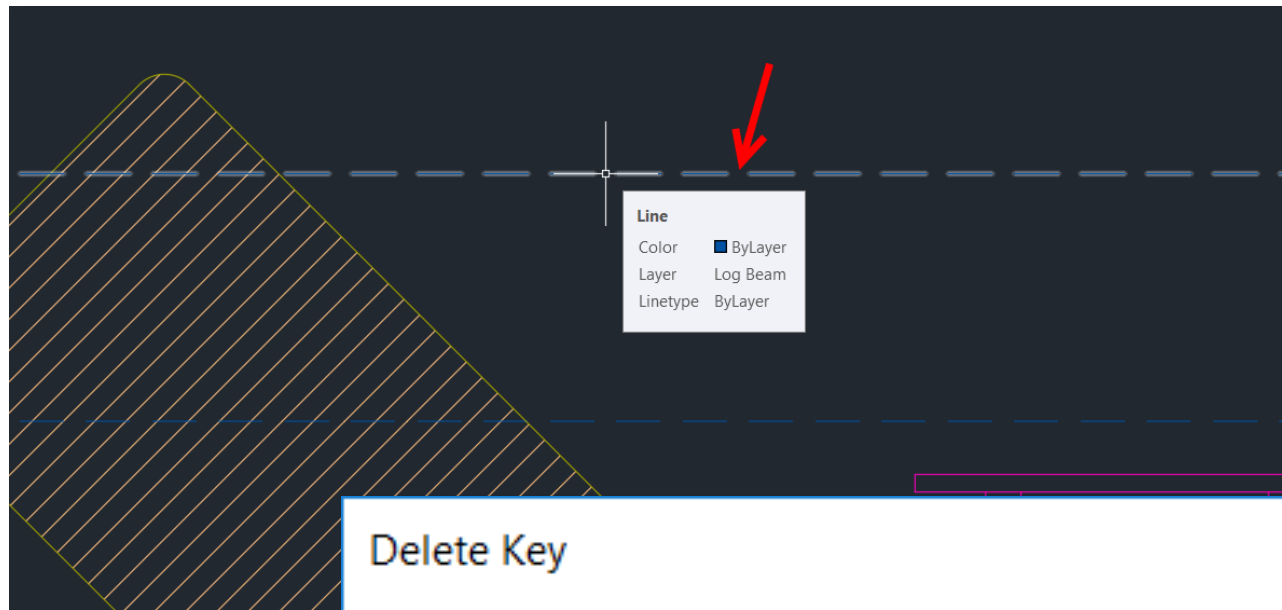
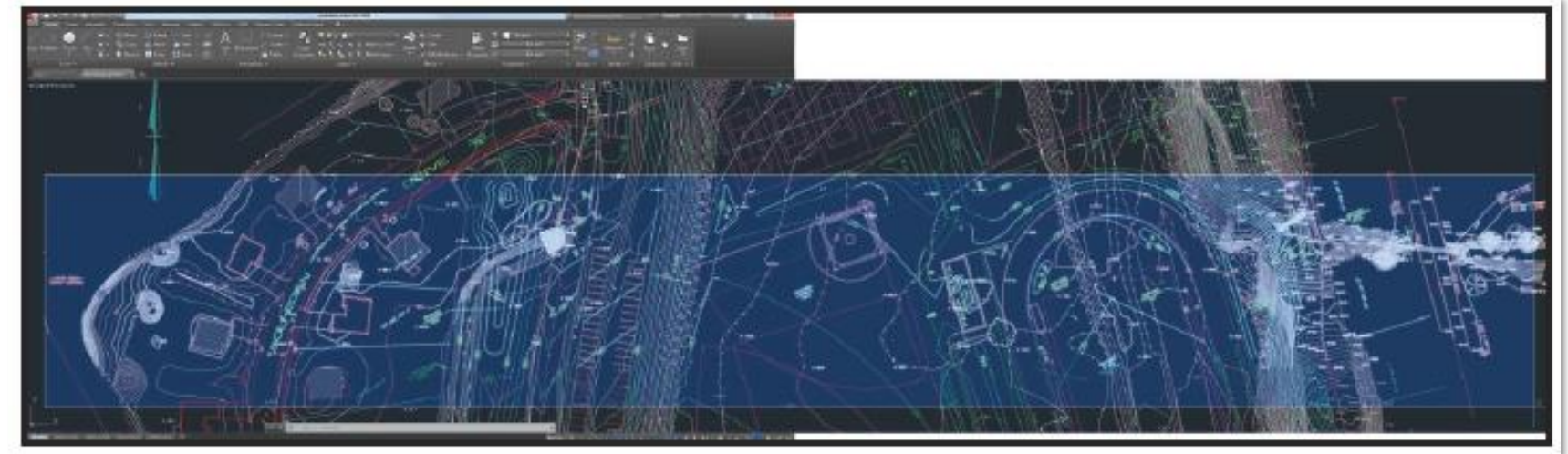
1. **Status Bar 1** – use the “hamburger” button to add tools to the status bar
2. **Status Bar 2** – the status will automatically go to 2 lines if there are more tools
3. **System Variables** – can be reset to preferred values (SYSVARMONITOR)





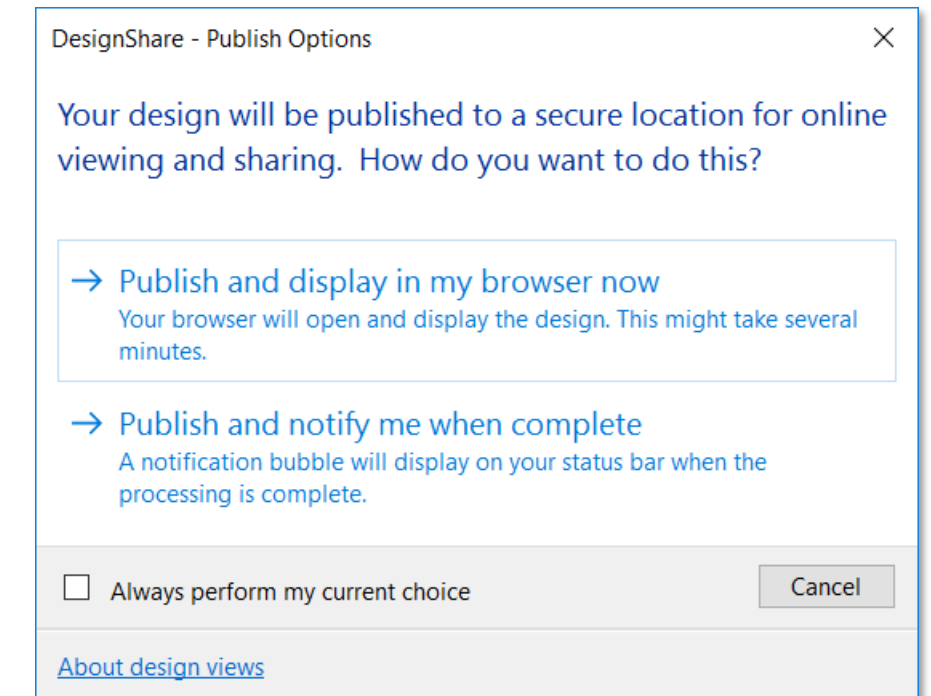
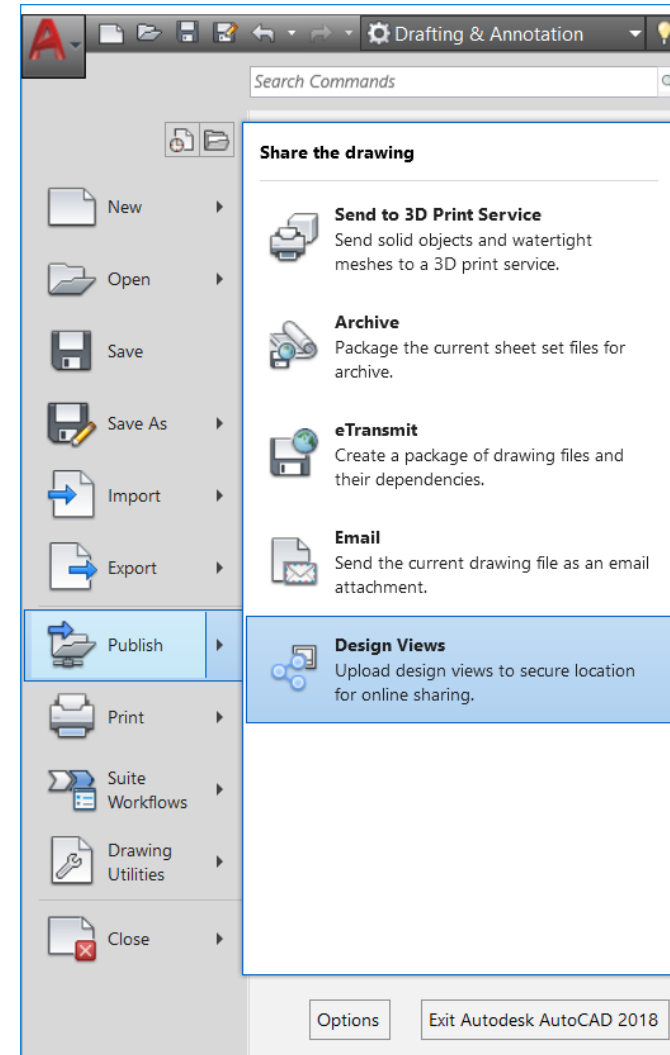
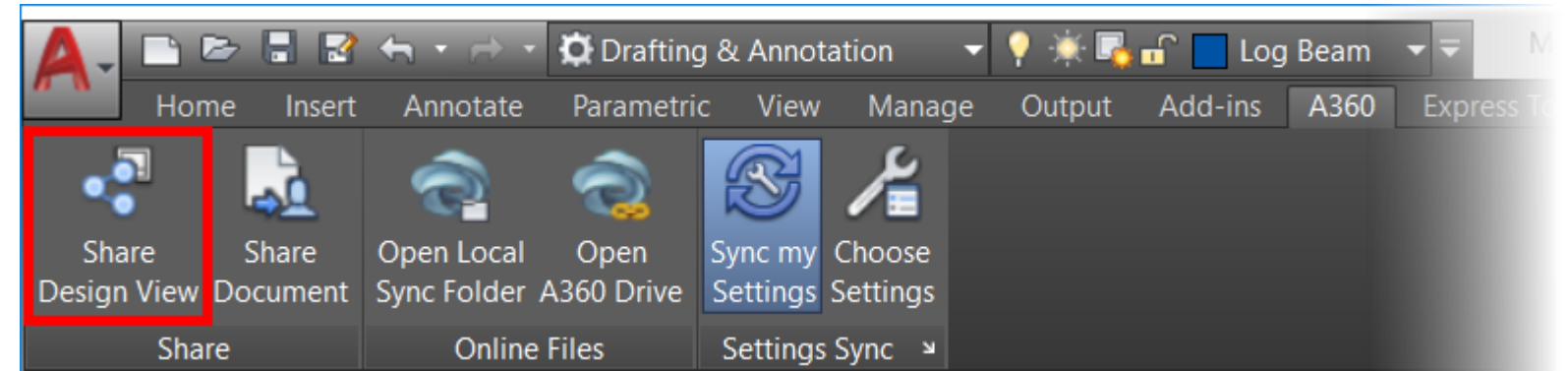
# Selecting Objects

1. **Off Screen Selection** – use the SELECTIONOFFSCREEN variable (set to 1). Great for those longer drawings!
2. **Snapping to gaps** – don't you just hate clicking on a gap in a dashed line? Use LTGAPSELECTION to solve it!
3. **Can't DELETE?** – check that pesky PICKFIRST variable!



# Share Design View

1. **Autodesk ID** – you must be signed in to share!
2. **Application Menu** – look under Publish to find Design Views
3. **A360 Tab** – look in the Share panel in the A360 tab on the AutoCAD 2018 ribbon
4. **Browser** – you can publish immediately or be notified when the shared design is ready



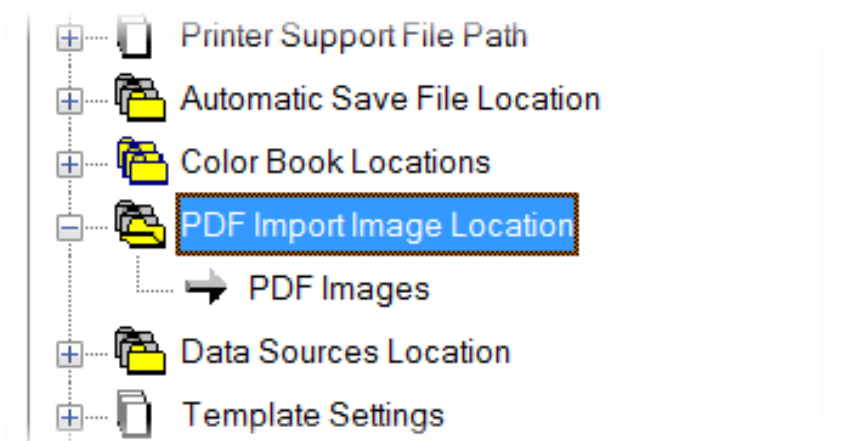
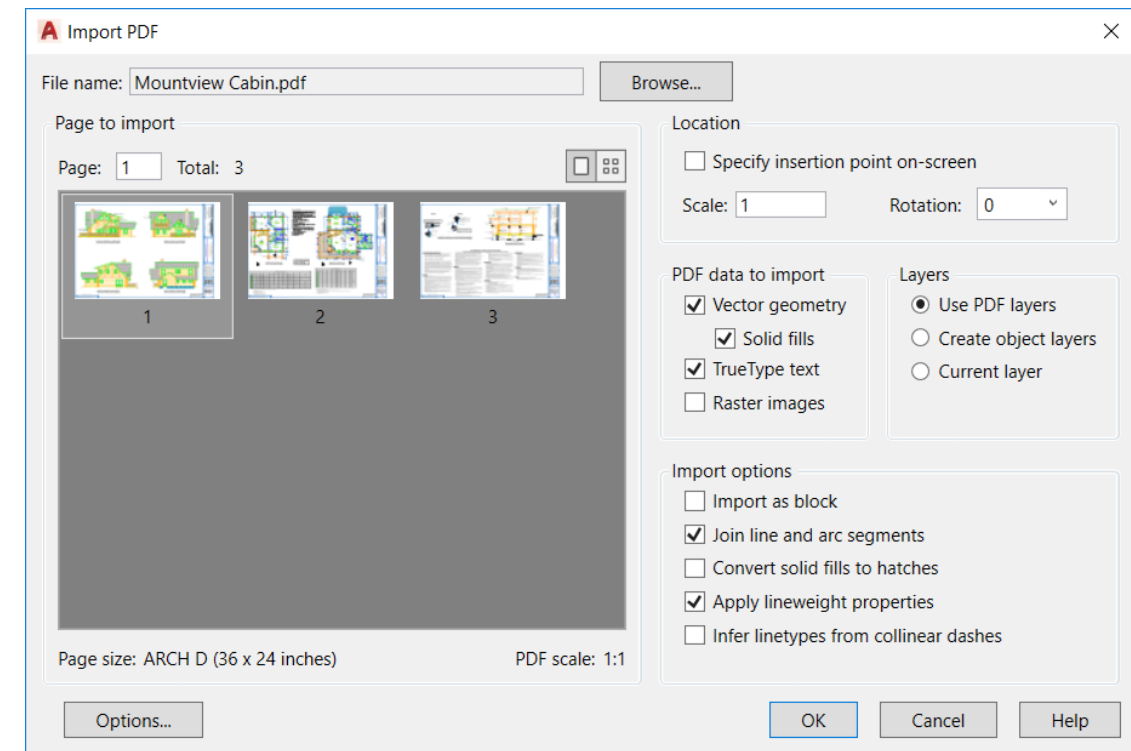
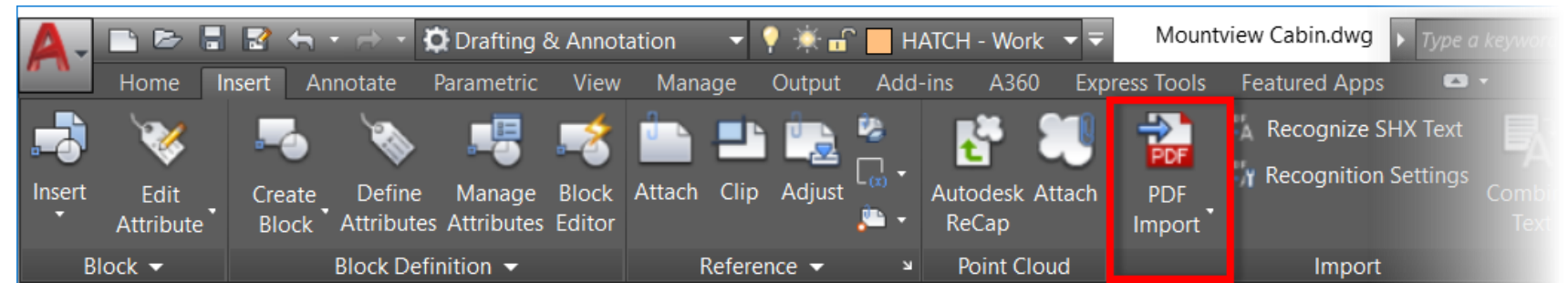




# PDF Enhancements

# Importing PDF Files

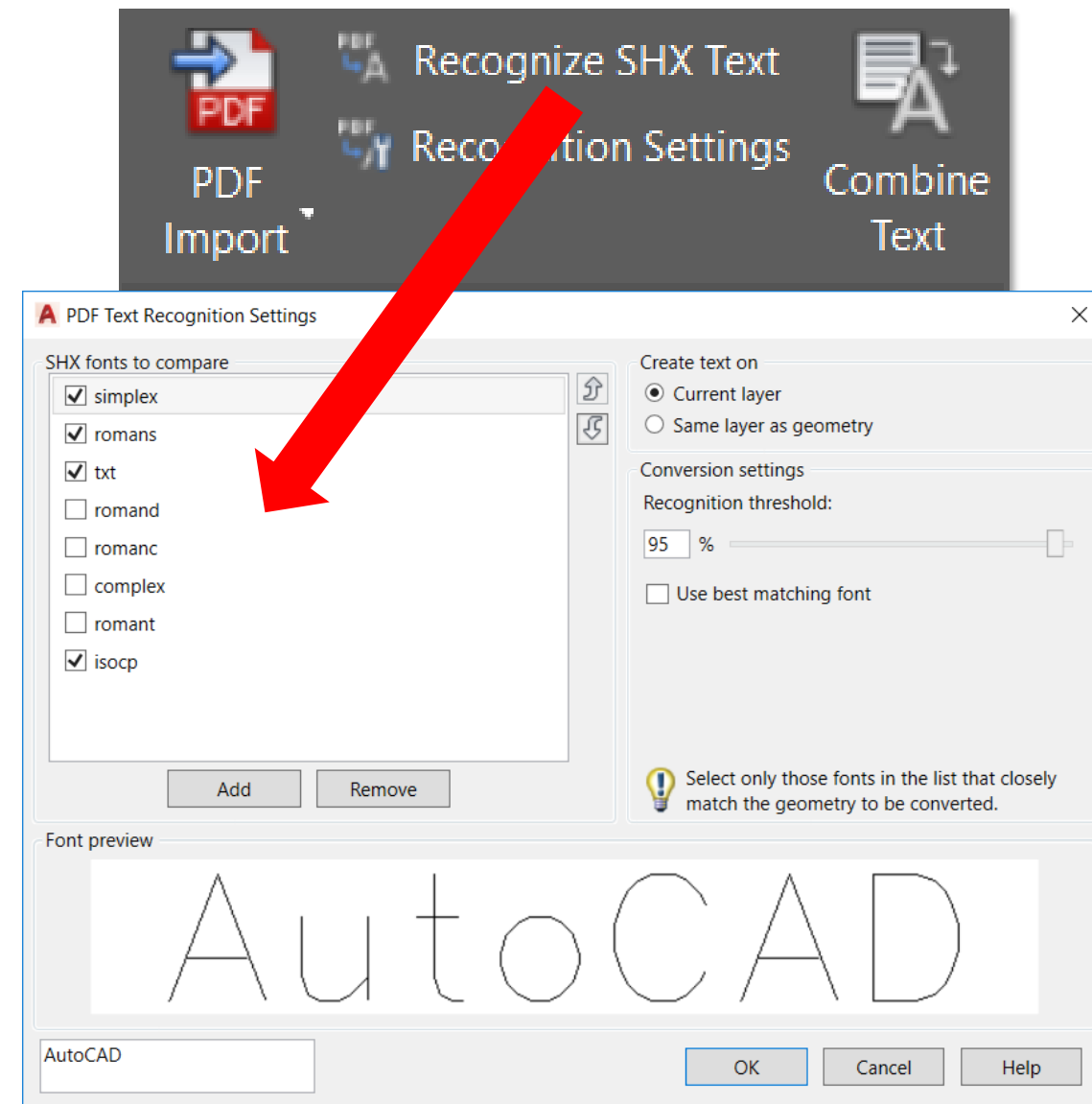
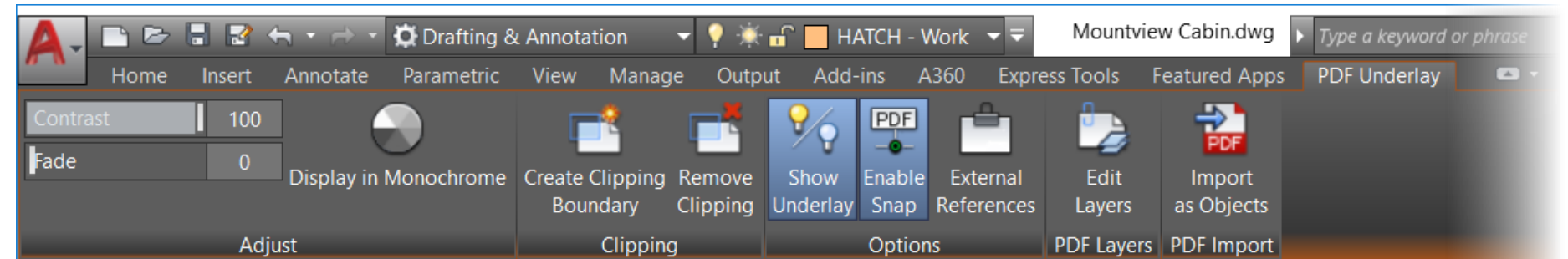
1. **PDF Import tool** – use PDF Import on the Insert ribbon tab (it's also on the Application Menu)
2. **Choose a page** – define scale, rotation, insertion point and what data you want to import
3. **Raster images** – imported as PNG files. You can specify where they go in the Options dialog box (Files tab)





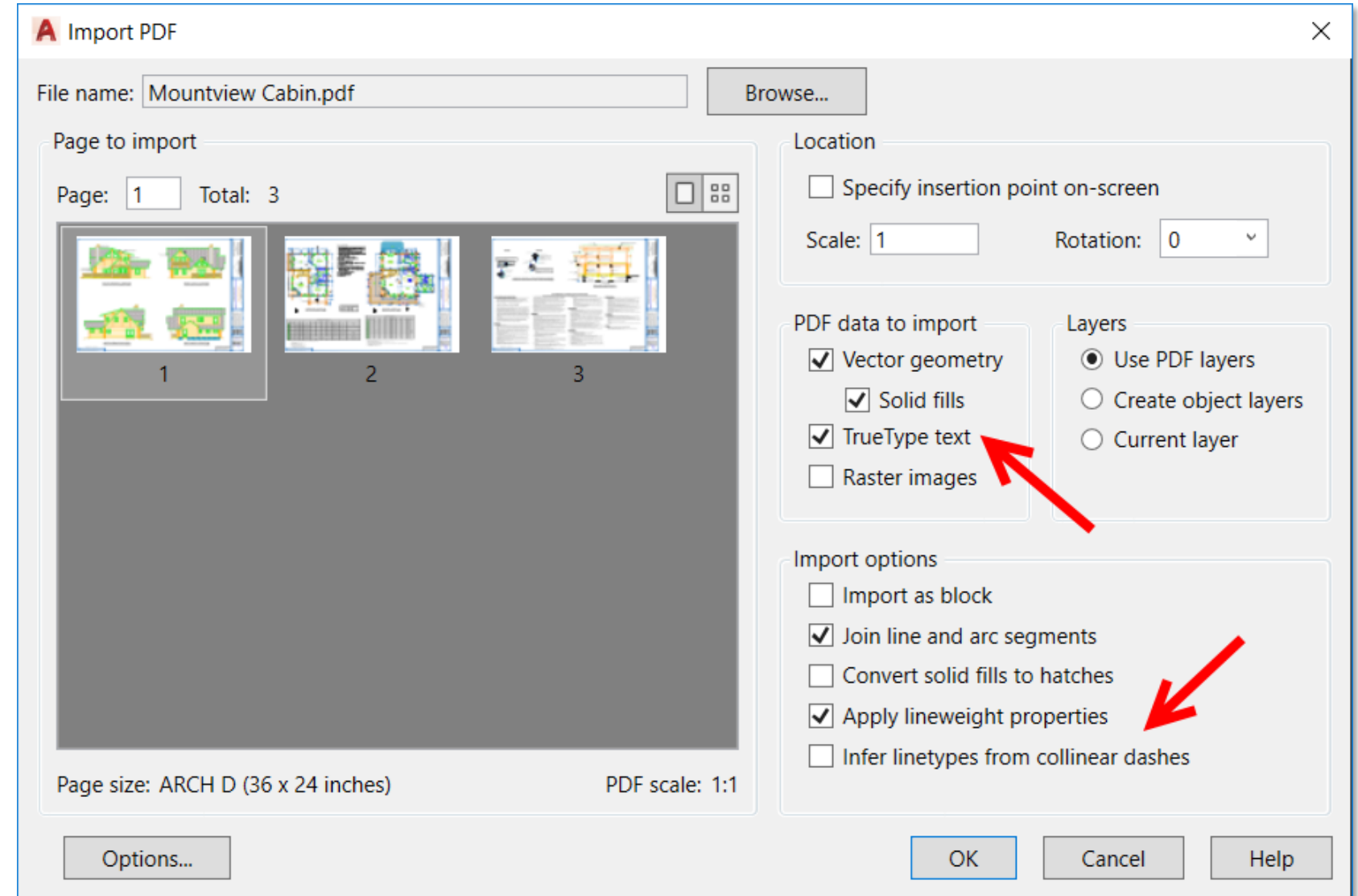
# PDF Underlays and Text

1. **Importing PDF Underlays** – The PDFIMPORT command offers you the option of selecting an existing PDF underlay (contextual PDF Underlay ribbon tab)
2. **SHX Text Recognition** – PDF does not recognize SHX text, so it comes out as AutoCAD objects, this is where PDFSHXTEXT comes in!



# Linetypes and Text

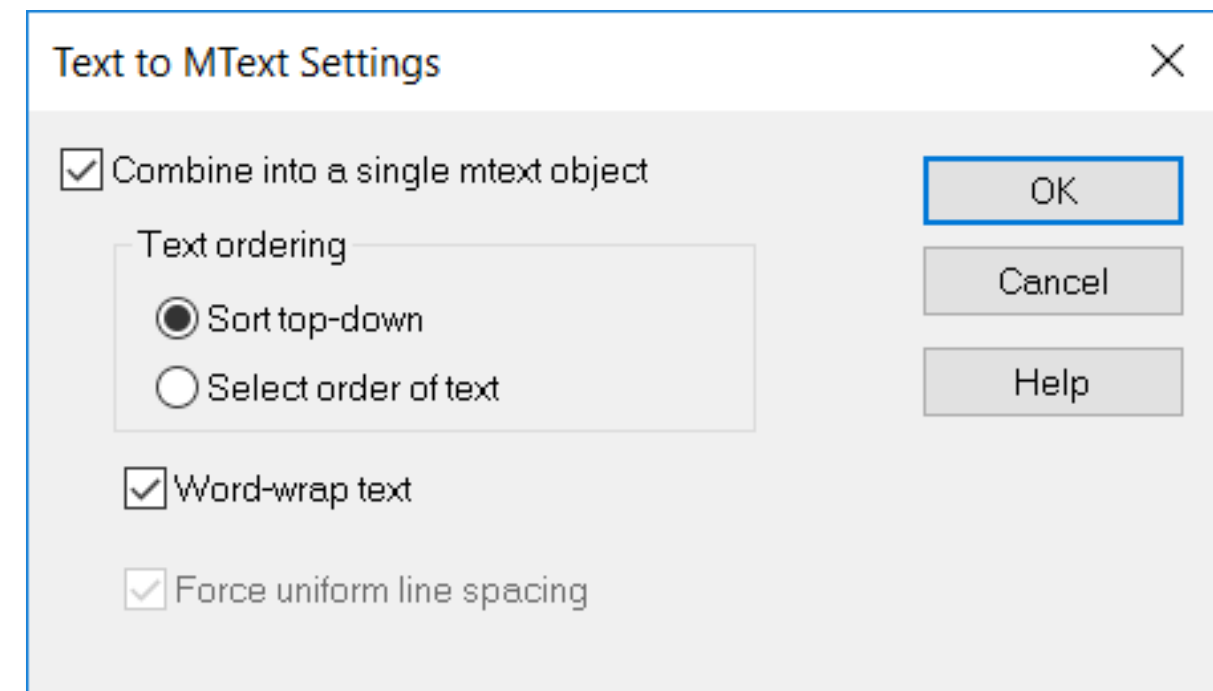
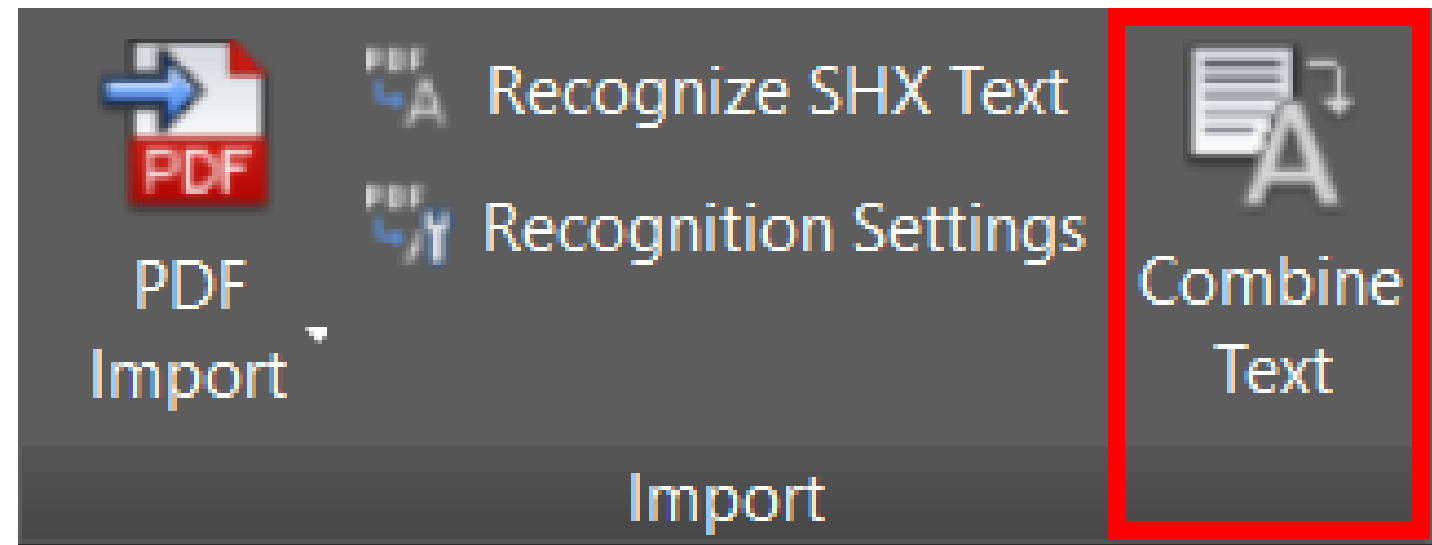
1. **Infer Linetypes from Collinear Dashes** – AutoCAD will look at dashes and dots and replace with a polyline. If unchecked, EVERY dash and dot will be a polyline (ouch)!
2. **Linetypes** – AutoCAD creates a linetype called PDF\_Import
3. **Text** – TrueType fonts come in as regular text objects, but SHX fonts are not recognised (but don't worry)!





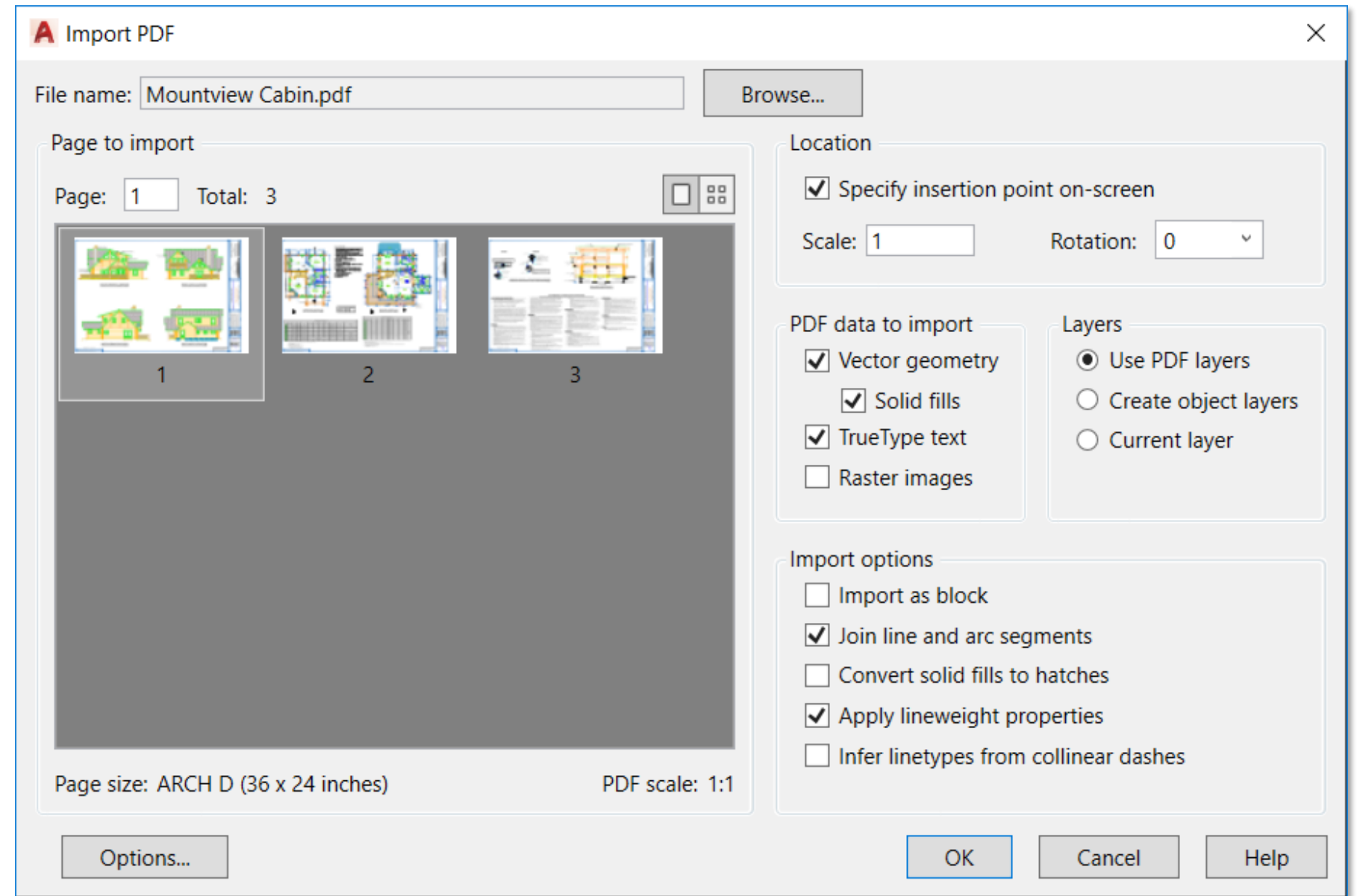
# Combining Text

1. **Combining Text With TXT2MTEXT** – After converting the SHX text from the PDF to mtext, use the TXT2MTEXT command to group individual mtext objects in to one group of mtext. Originally an Express Tools command, it is now on the Import panel. Check out the “Force uniform line spacing” option!



# Other PDF Enhancements

1. **Thumbnail Previews** – We now get thumbnail previews in the PDFIMPORT and PDFATTACH dialogs
2. **Improved Scaling** – better scaling of PDF geometry from layouts
3. **Better data** – Improved form data from importing PDFs



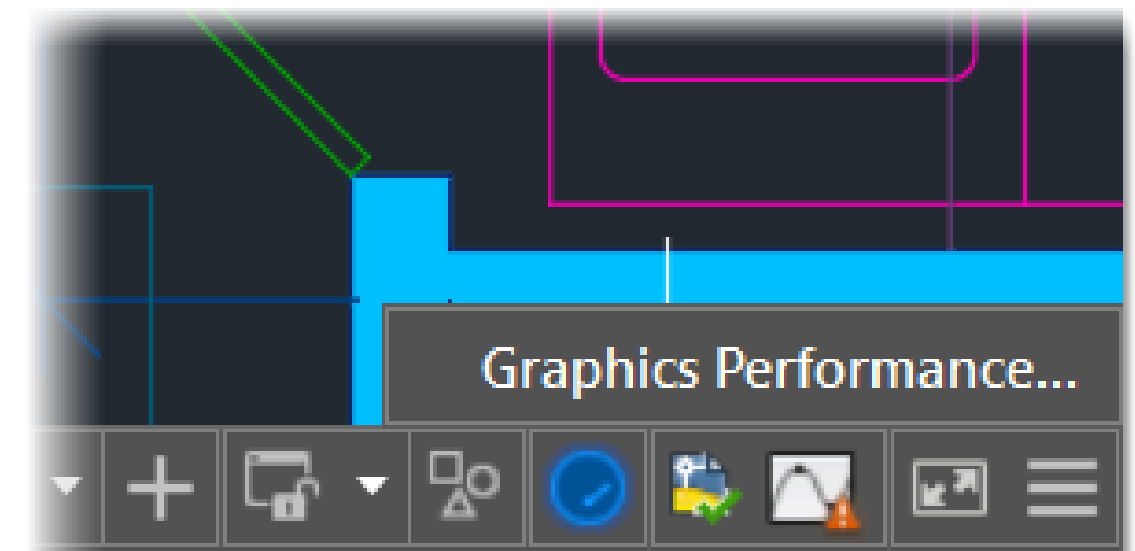
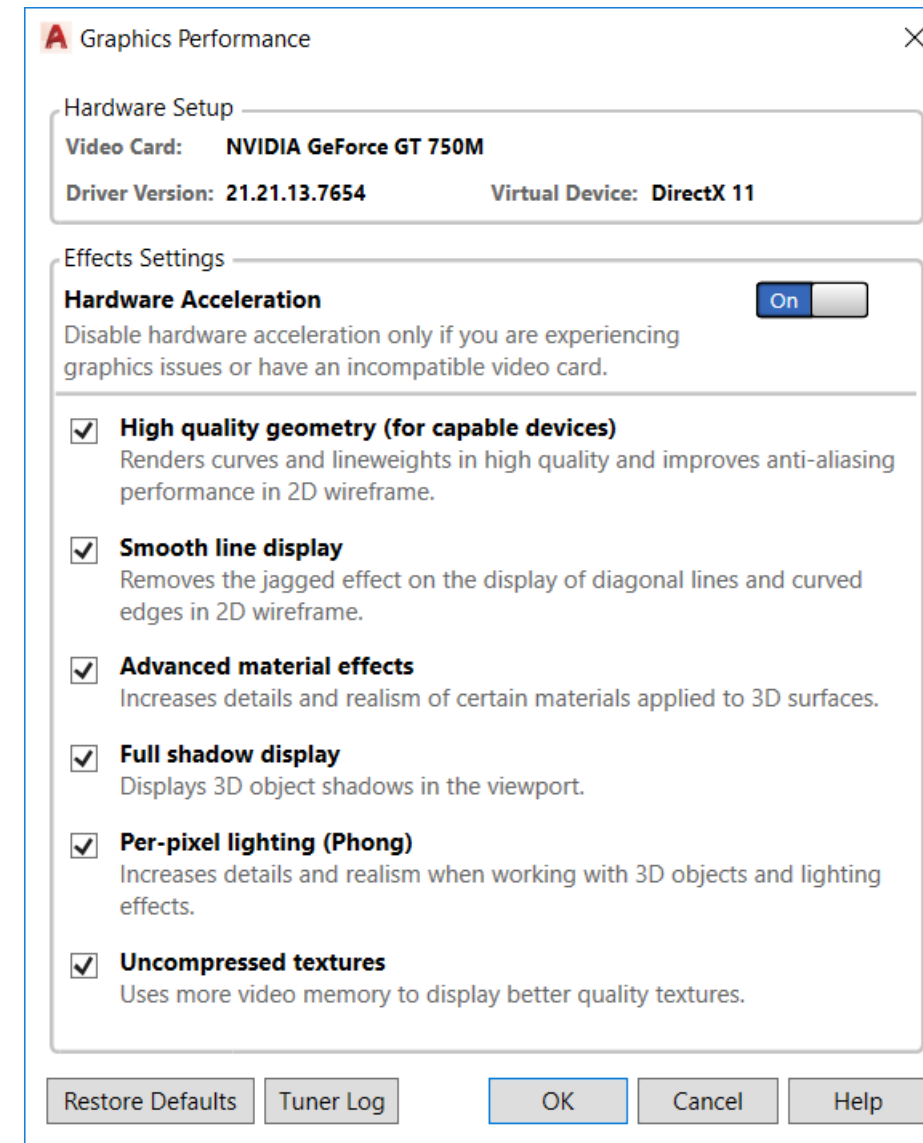




# Technology & Performance Updates

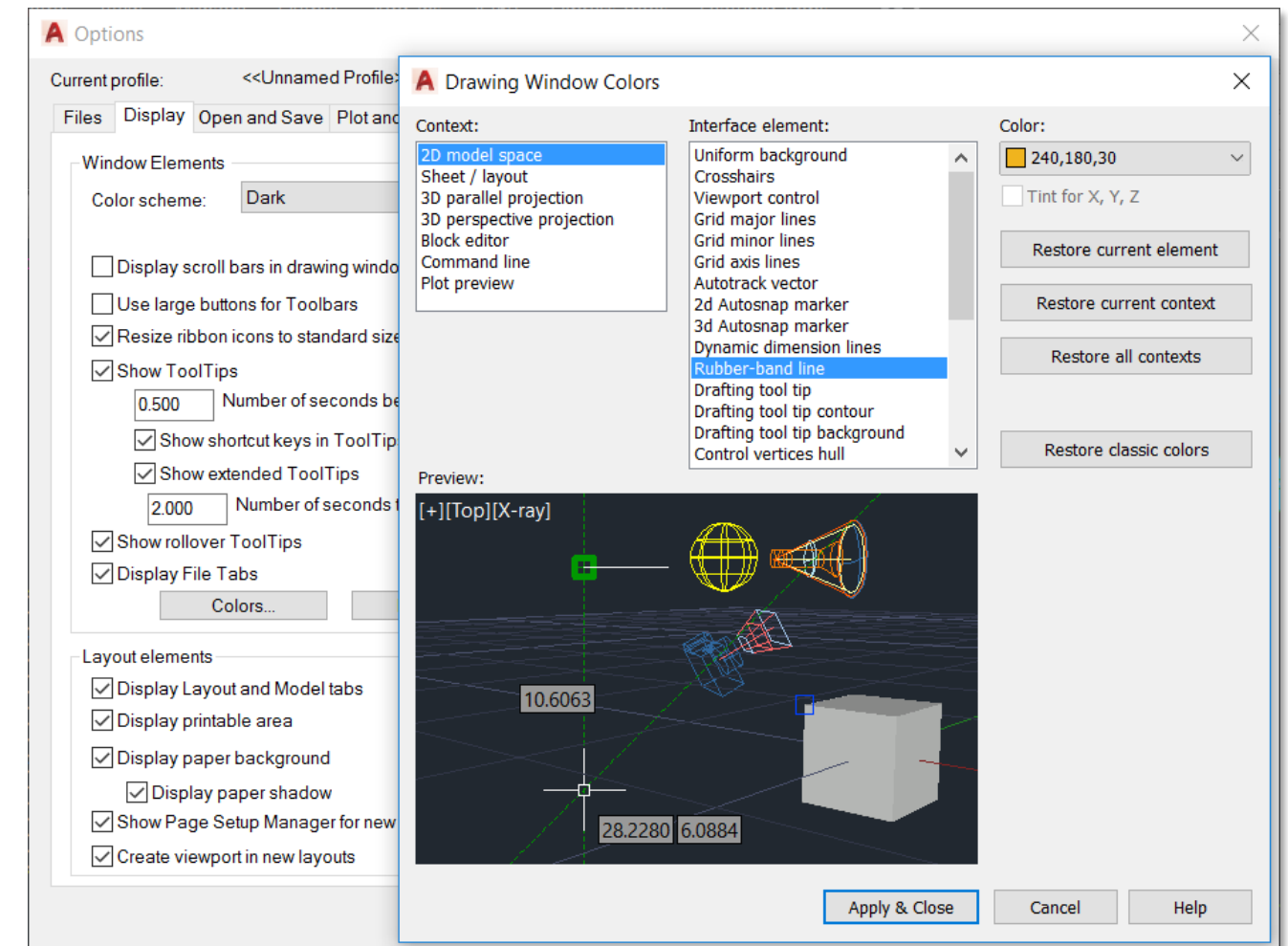
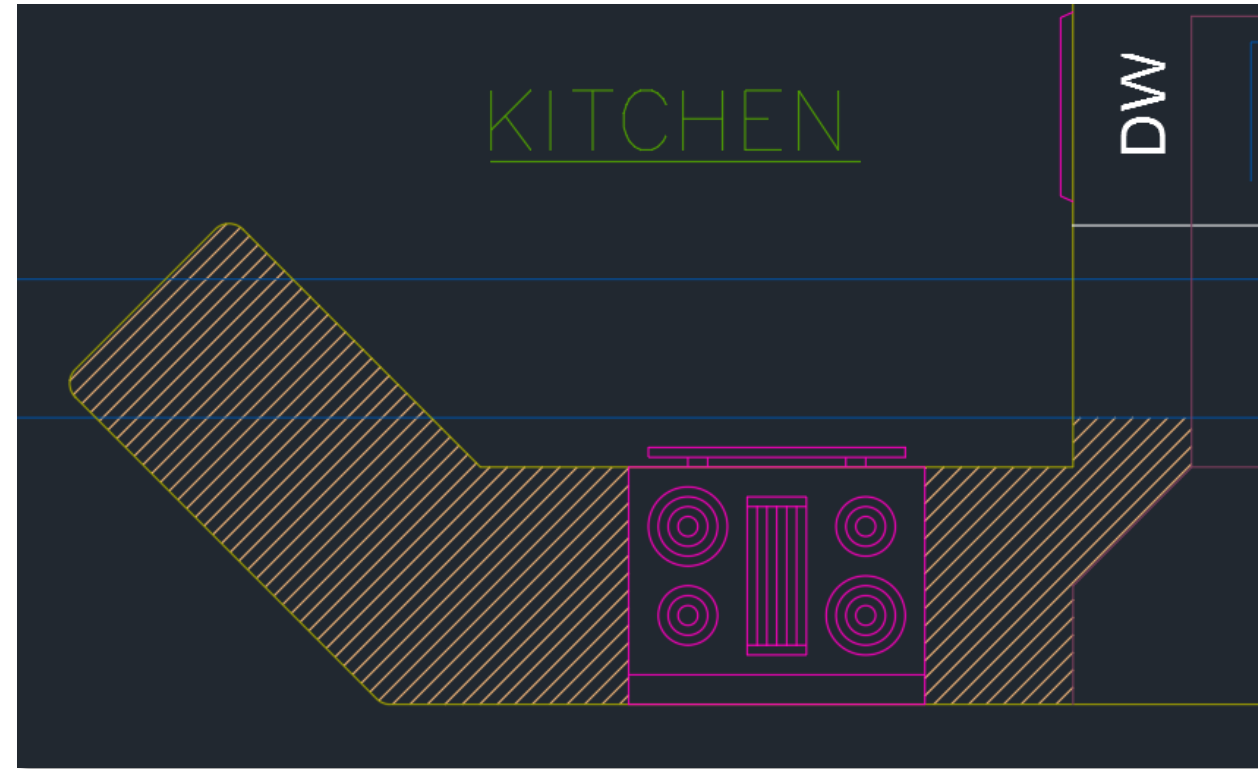
# Graphics Performance

1. **Graphics Card** – you will need a DirectX 11 card with hardware acceleration ON!
2. **Graphics Performance** – it's on the status bar bottom right (GRAPHICSCONFIG)
3. **Line Fading** – can be controlled by LINEFADING set to 1
4. **Line Fading Level** – control amount of line fade with LINEFADINGLEVEL



# Other Graphics Stuff

1. **Parallel Hatches** – you will find these have a more consistent line spacing, graphically
2. **Rubber Band Line Colour** – it's the line that appears when moving or copying objects. It's controlled in your OPTIONS dialog box in the Display tab
3. **Generally**, the 2D and 3D graphics performance have been improved in AutoCAD 2018



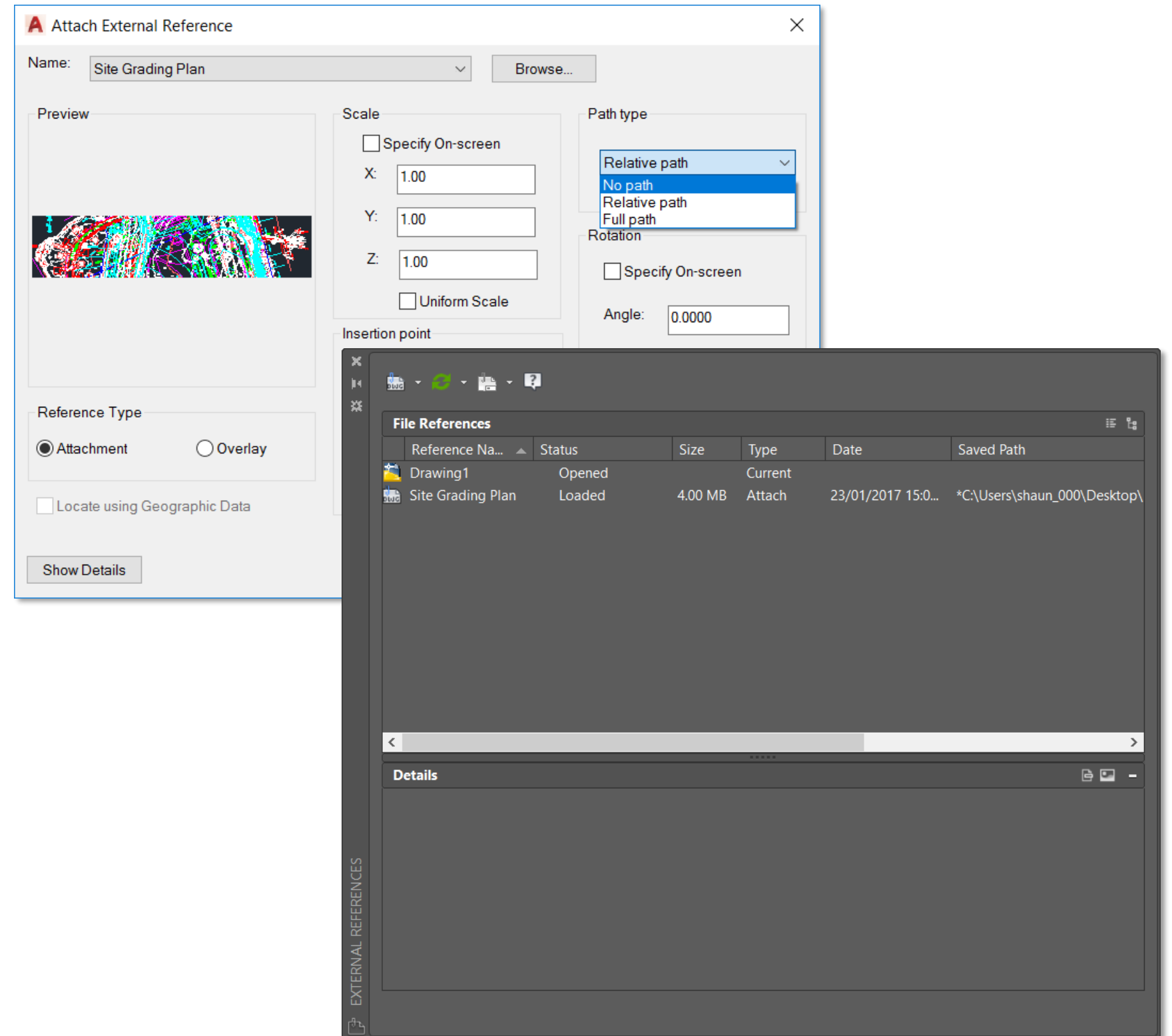




# External References (XREFs)

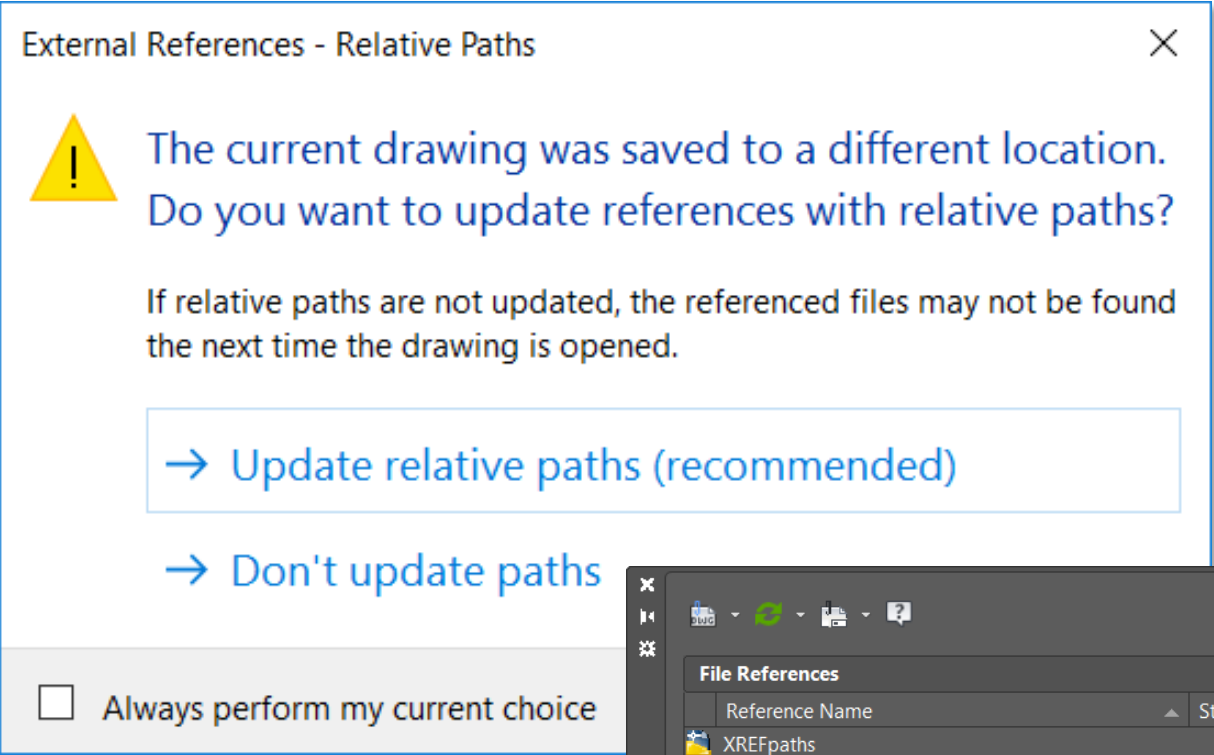
# Reference Paths

1. **Default Path Type** – Default XREF path is now set to Relative. You can also set REFPATHTYPE = 0 for no path, 1 for Relative and 2 for Full Path
2. **Unnamed Host Drawing** – You can now add an XREF to an unnamed or unsaved host drawing

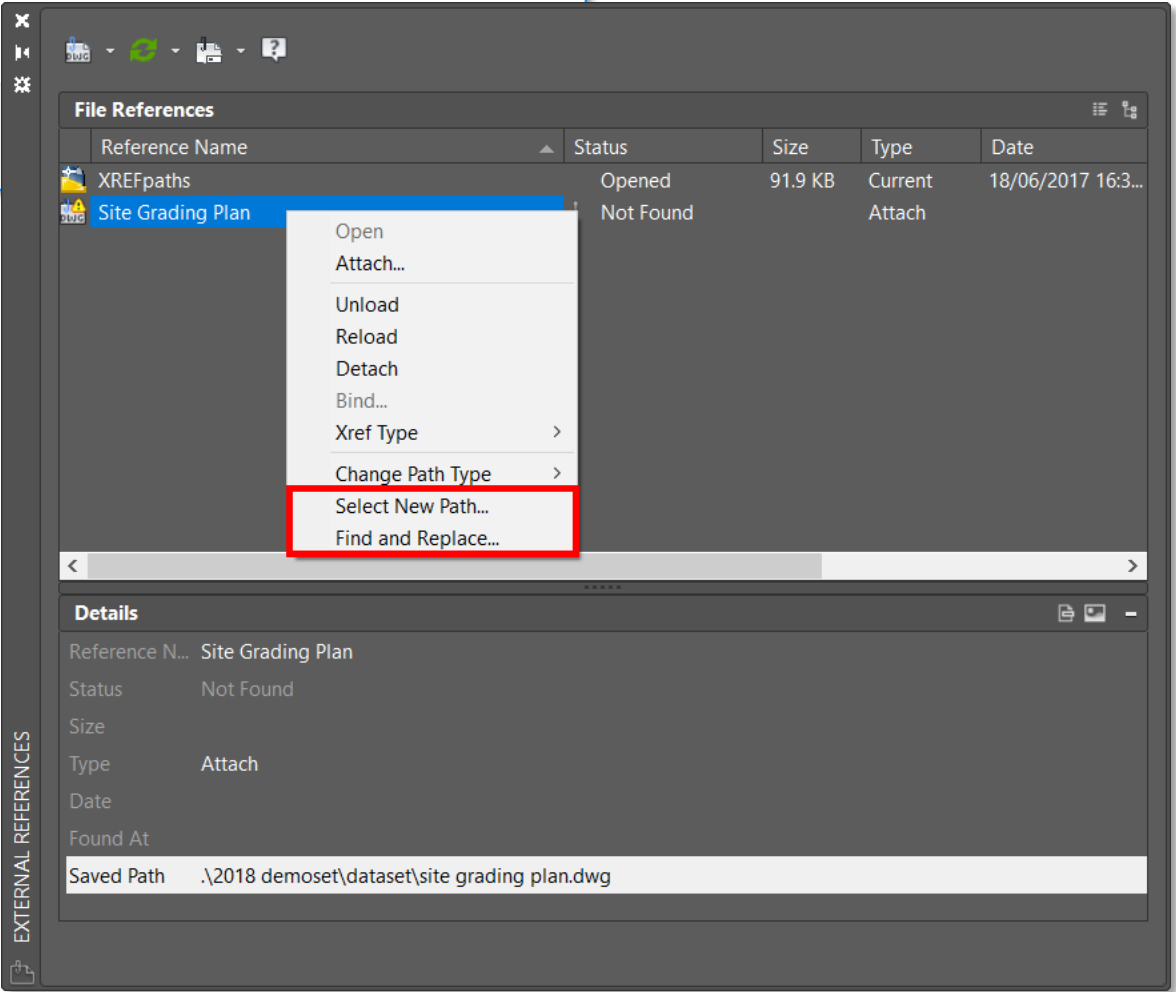
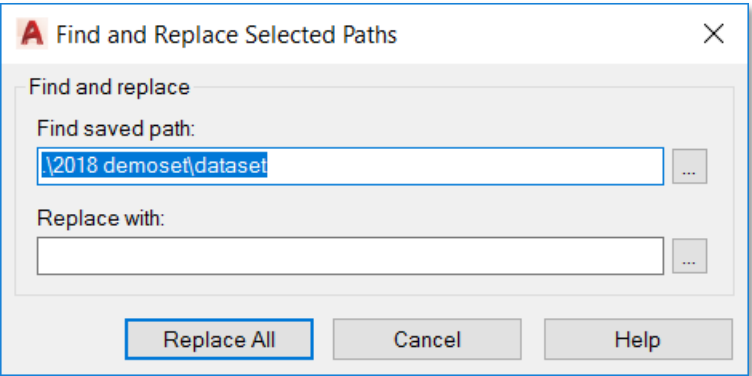


# Broken Reference Paths 1

1. **Relative References** – if you have relative XREFs in the current drawing and you save the host drawing to a new location, you are prompted to update the relative XREF locations



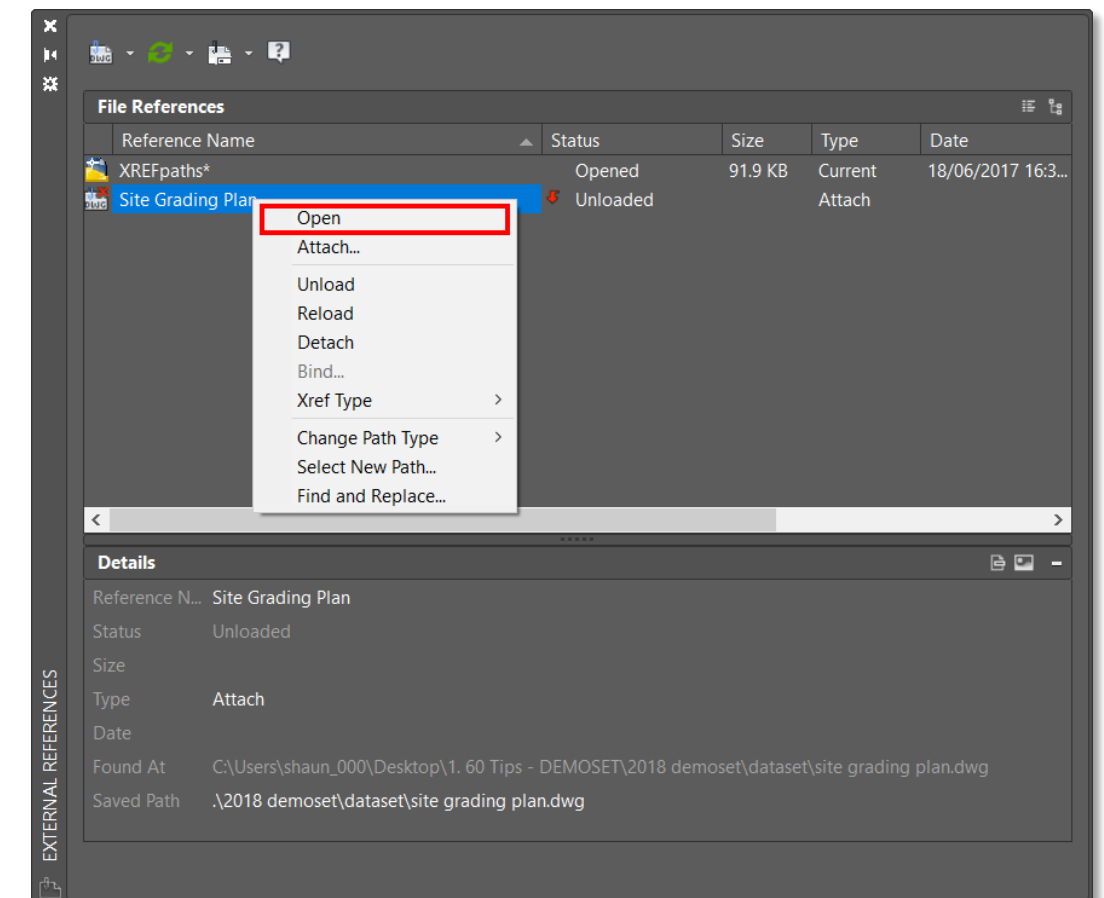
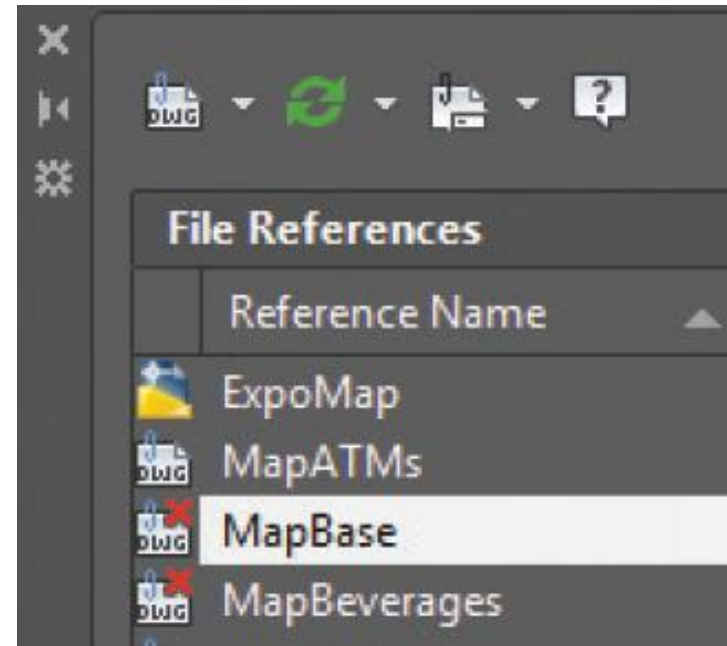
2. **Changing Paths** – You can now select a new XREF path or Find and Replace the XREF. You can apply this to ALL missing XREFs!





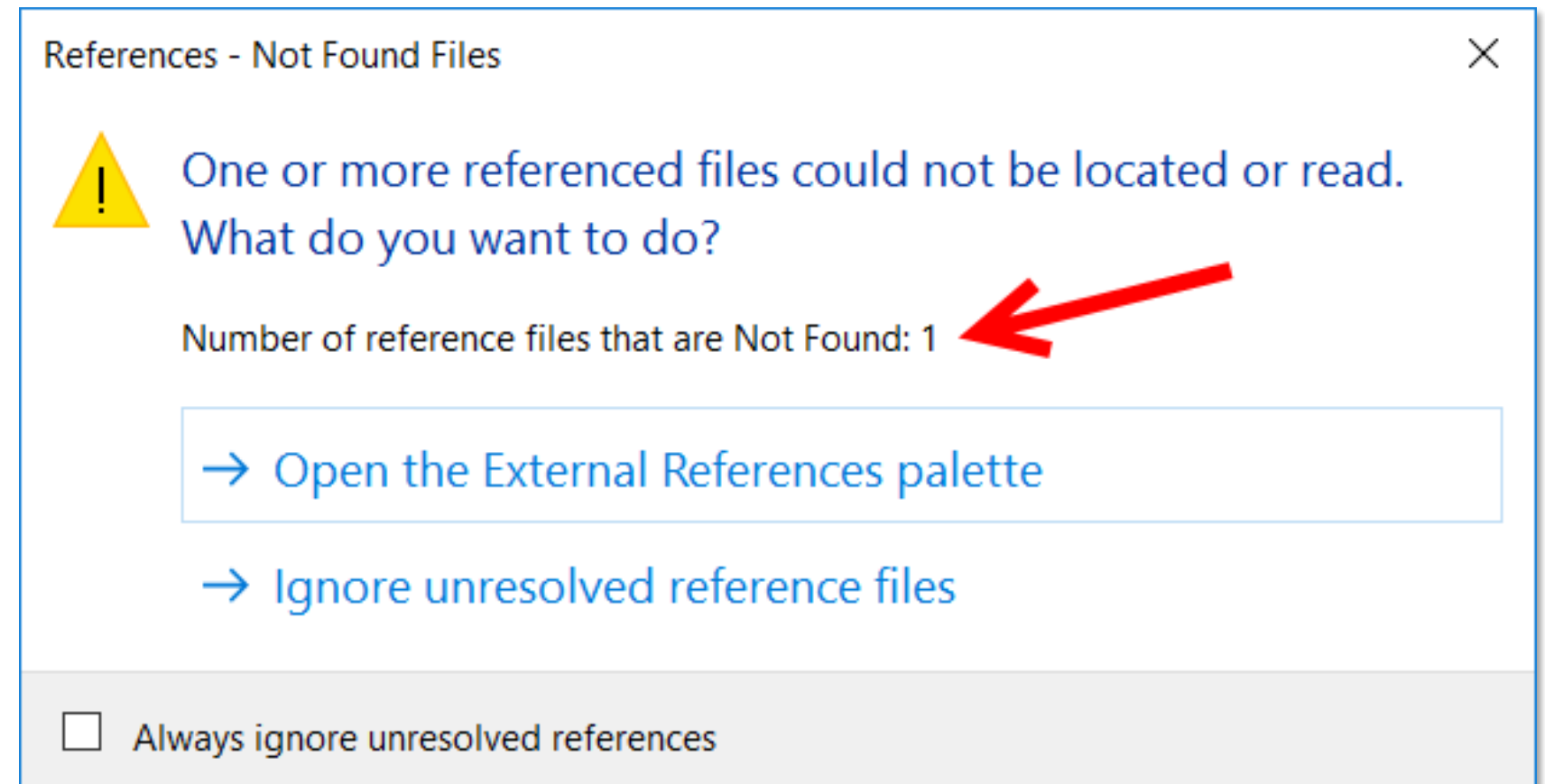
# Broken Reference Paths 2

1. **Child References – Nested**  
(child) references now display as Orphaned (poor) references if the Parent reference is Unloaded or Not Found
2. **Opening Unloaded XREFs –**  
You can now open an XREF that isn't loaded in the host drawing



# Less Stress

1. **Less Stressful Syntax** – We all know the dreaded “Missing number of reference files” warning, right? It makes them sound like they should be on a milk carton (American joke, lol). Well, now the statement is softer, saying “Number of reference files that are Not Found” (so there is a little bit of hope)!



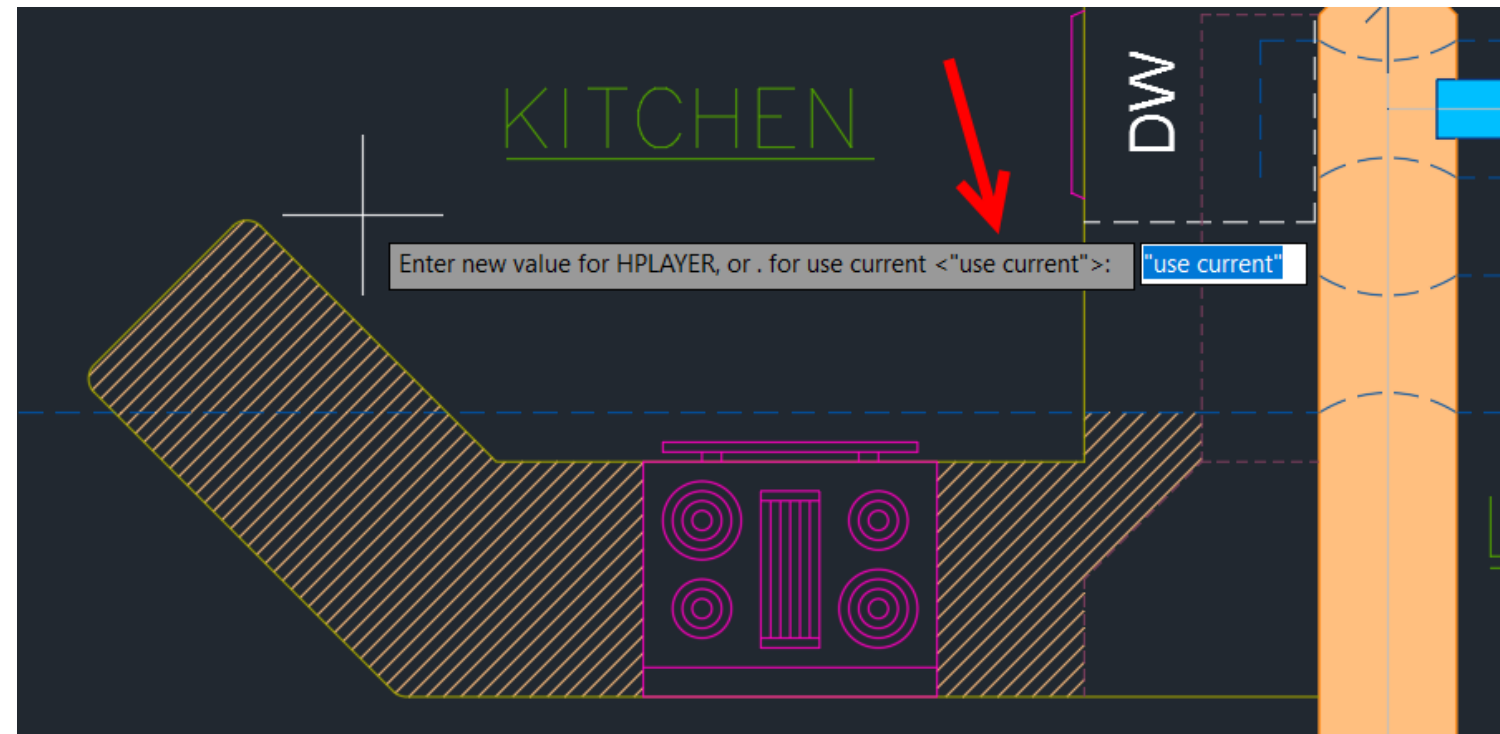
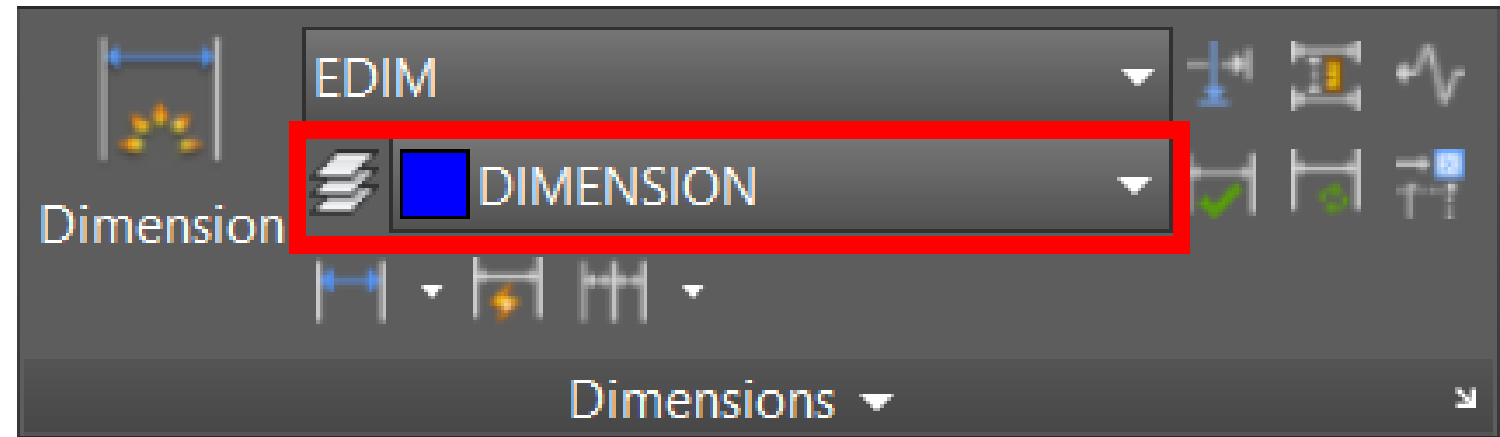
The background features a blue gradient bar at the bottom, transitioning from a darker blue on the left to a lighter blue on the right. Overlaid on this is a complex, light gray wireframe mesh pattern that forms a series of interconnected, flowing, and somewhat circular shapes, resembling a stylized, abstract representation of a network or a series of connected loops.

Annotation



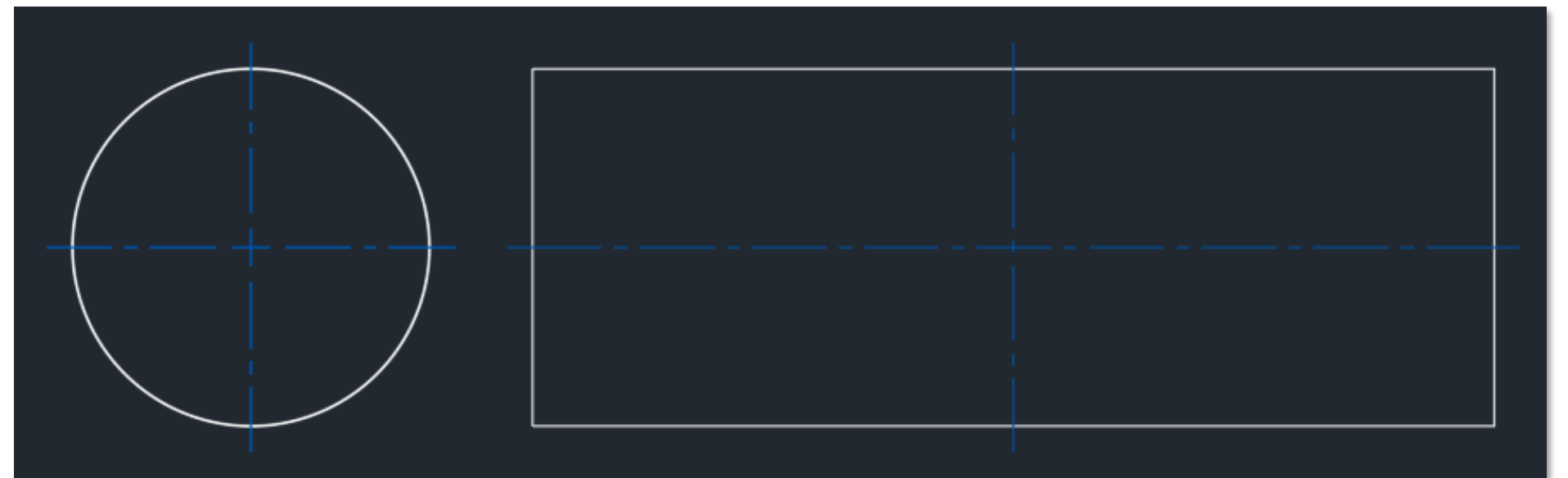
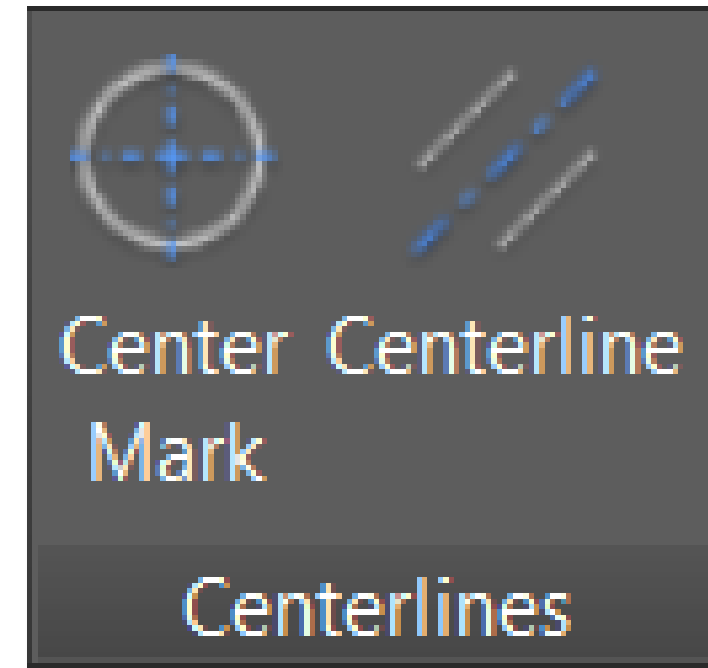
# Dimensions and Hatching

1. **Default Dimension Layer** – Set a default dimension layer with the DIMLAYER variable
2. **Hatch Layer** – You can now set a default hatch layer using the HPLAYER system variable. You can specify a non-existing layer and HPLAYER will create it for you!



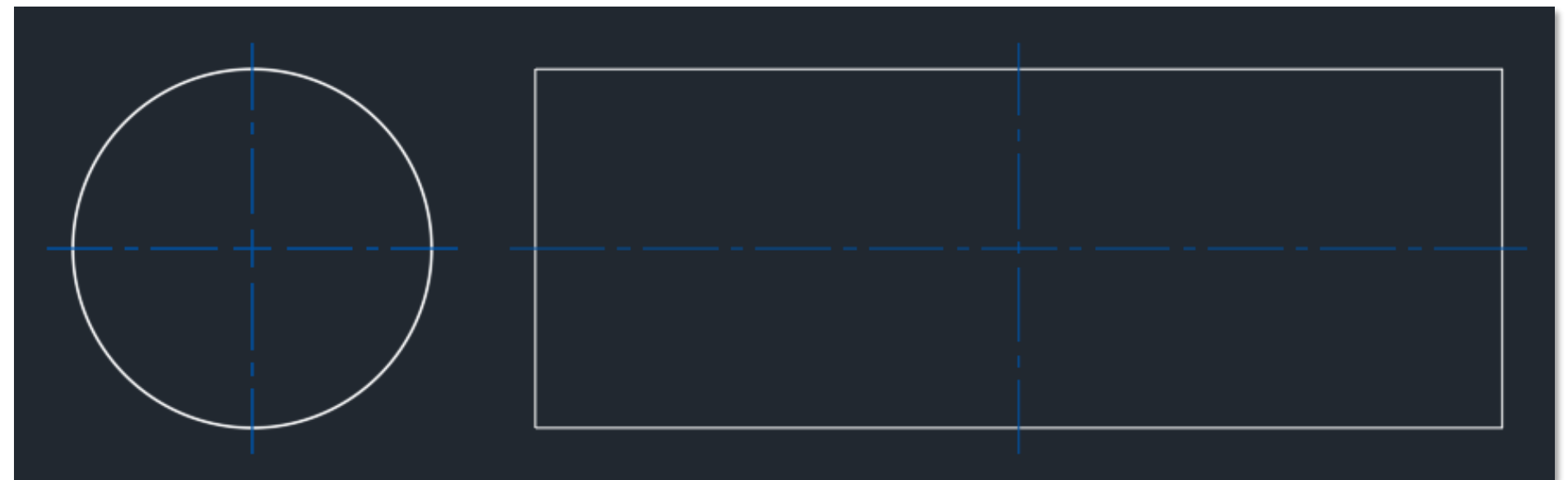
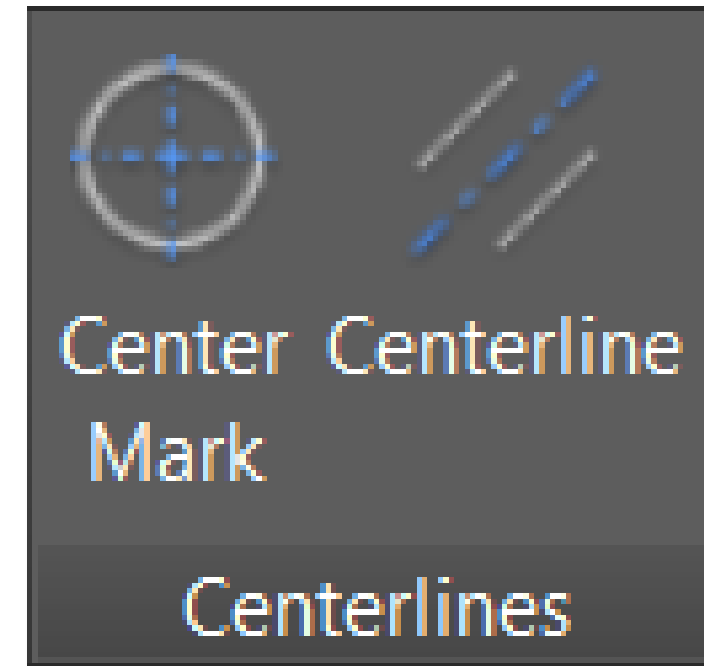
# Associative Centerlines and Center Marks

1. **Moving and Scaling** – If you move or scale an object with associative centerlines or center marks they update accordingly!
2. **CENTERDISASSOCIATE** – Disassociates centerlines and center marks from their associated objects
3. **CENTERREASSOCIATE** – Reassociates centerlines and center marks with their associated objects



# Centerlines and Center Marks – VARIABLES 1

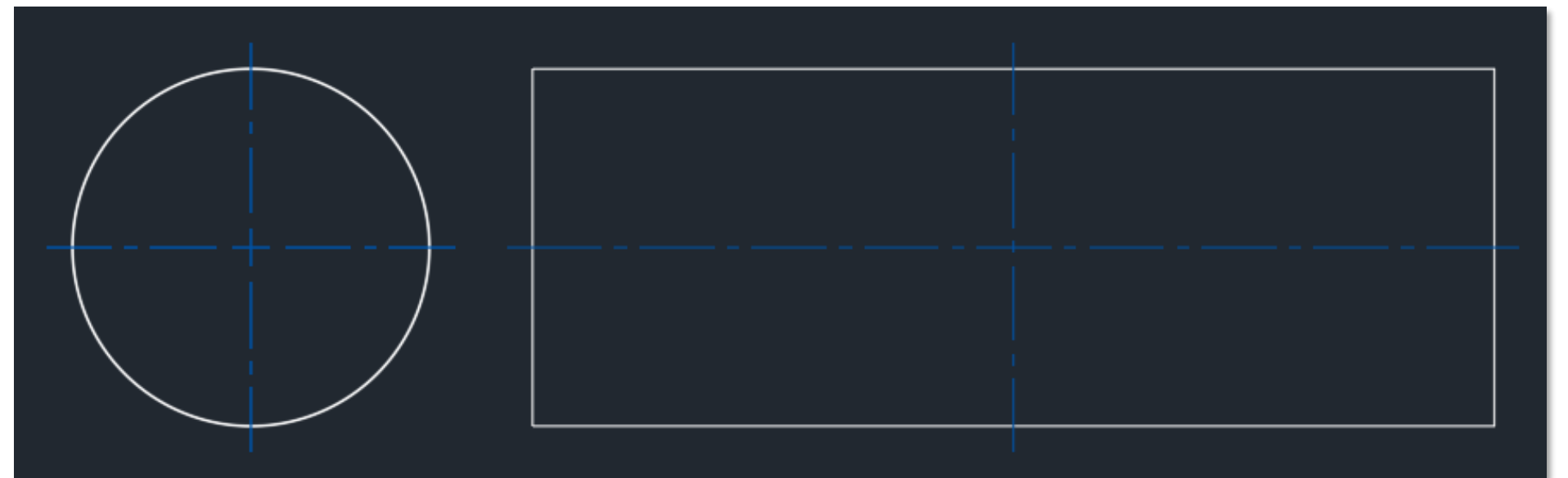
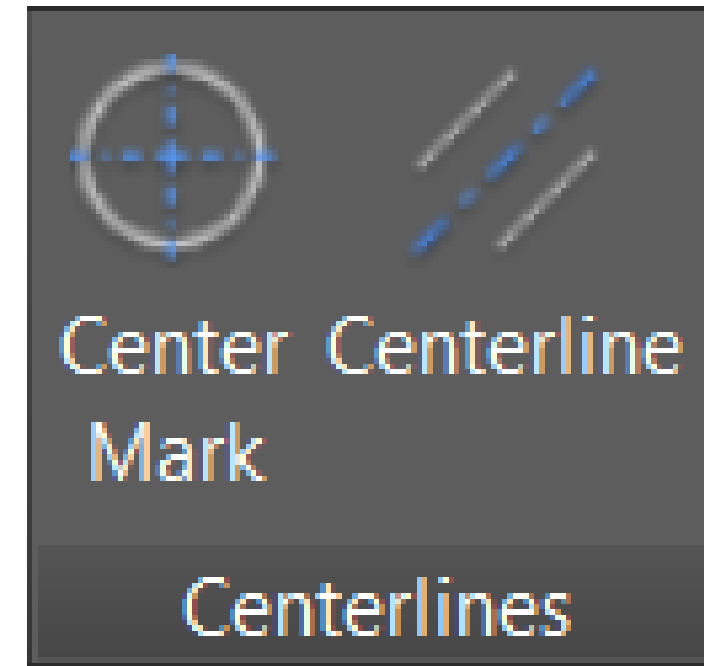
1. **CENTEREXE** – Controls the length the extension line overshoots
2. **CENTERMARKEXE** – Determines if extension lines are created (center marks)
3. **CENTERRESET** – Resets extensions lines to value set in CENTEREXE
4. **CENTERLTSCALE** – Sets the LTSCALE for the centerlines and centermarks





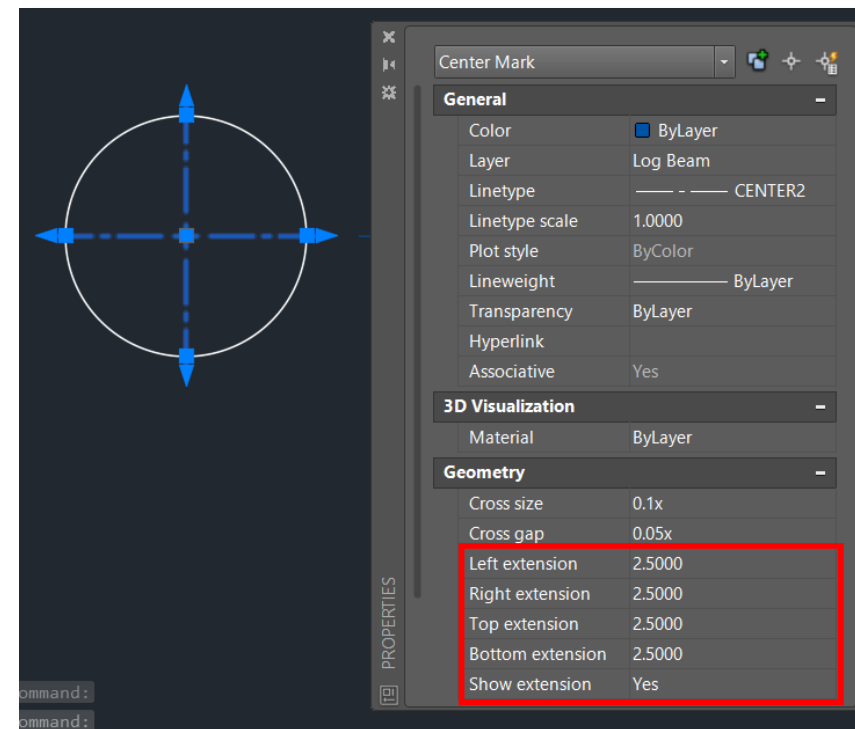
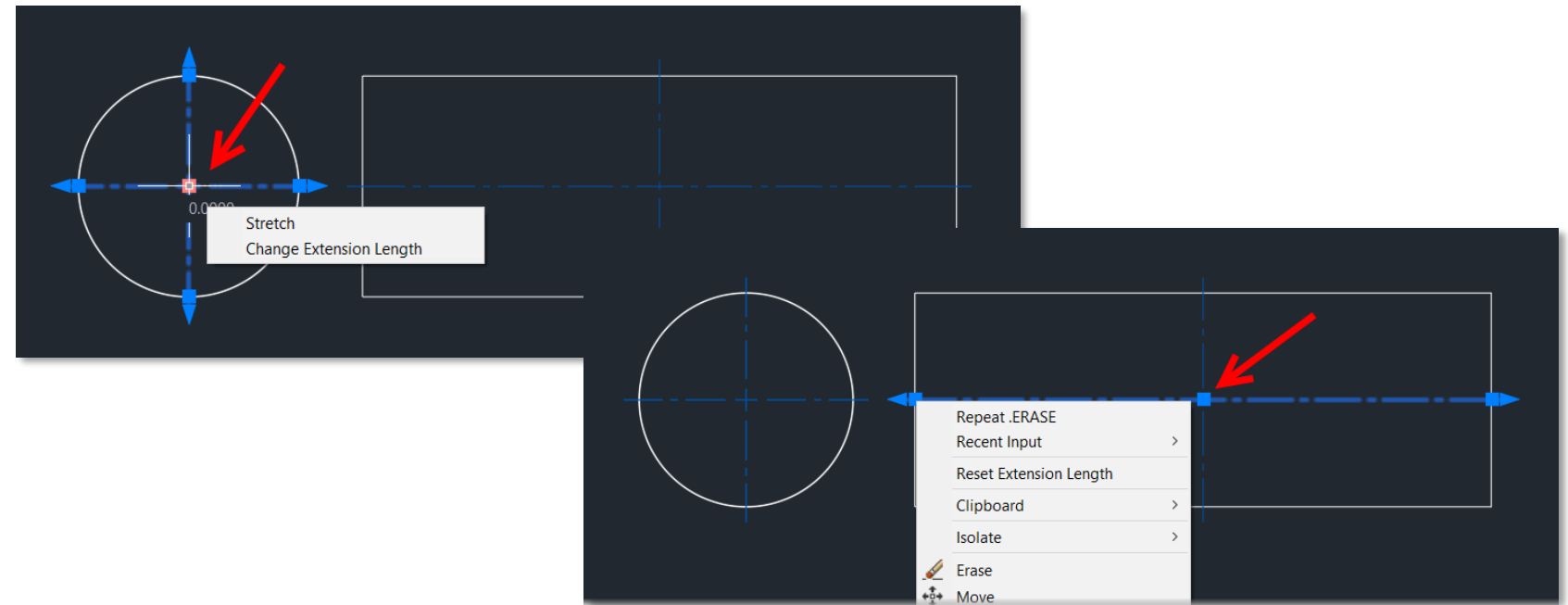
# Centerlines and Center Marks – VARIABLES 2

1. **CENTERLTYPE** – Controls the linetype of the centerlines and center marks
2. **CENTERLAYER** – defines the layer of the centerlines and center marks
3. **CENTERCROSSSIZE** – Sets the size of the central cross (center marks)
4. **CENTERCROSSGAP** – Defines the gap between the central cross and the extension line (center marks)



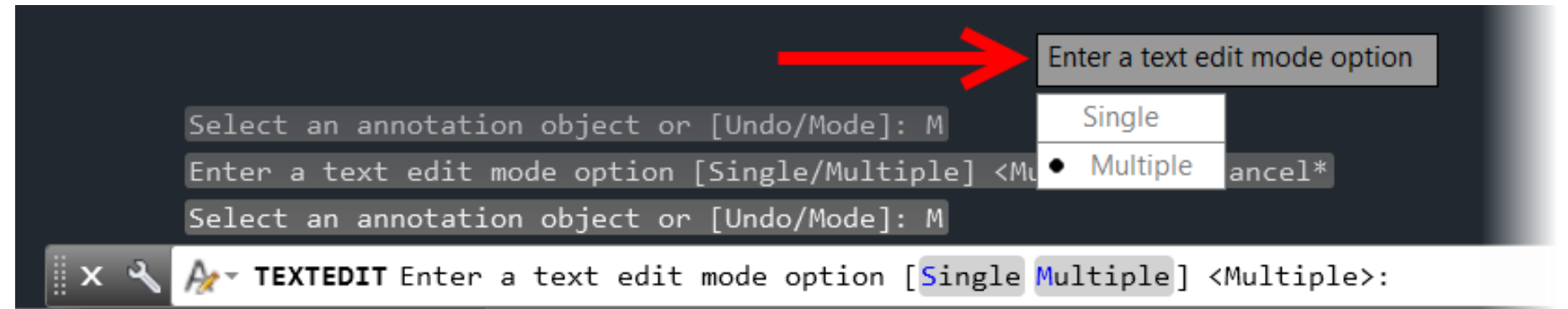
# Centerlines and Center Marks – VARIABLES 2

1. **Grips** – Use the grip controls to resize and change the extension length on both centerlines and center marks
2. **Properties** – The extension line overshoots can also be controlled in the Properties Palette for both centerlines and center marks



# Text Editing (TEXTEDIT)

1. **Mode** – Use the TEXTEDIT mode control (Single/Multiple) to edit either single lines of text or multiple lines of text. Saves on hitting Enter all the time!
2. **Undo** – Use the TEXTEDIT Undo option to undo text editing. If you use the regular Undo when in multiple mode, you'll lose it all!



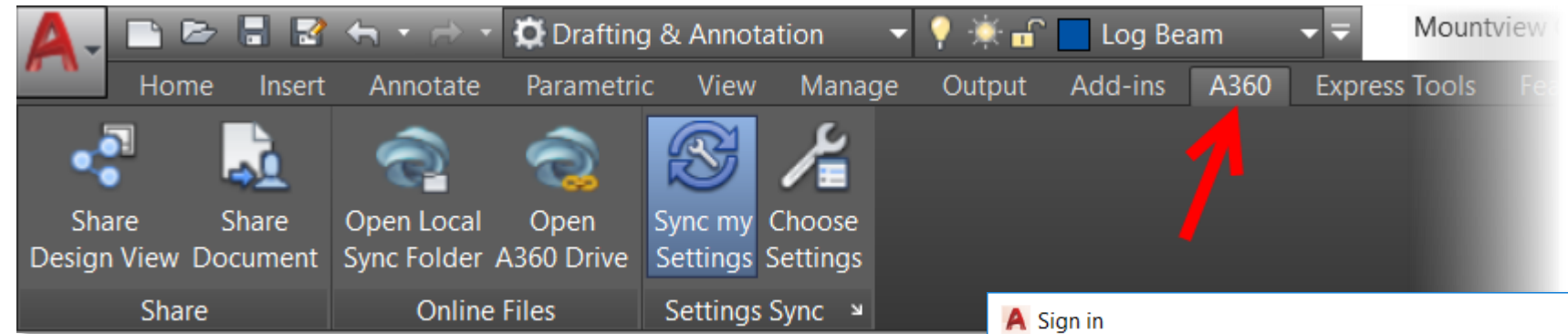




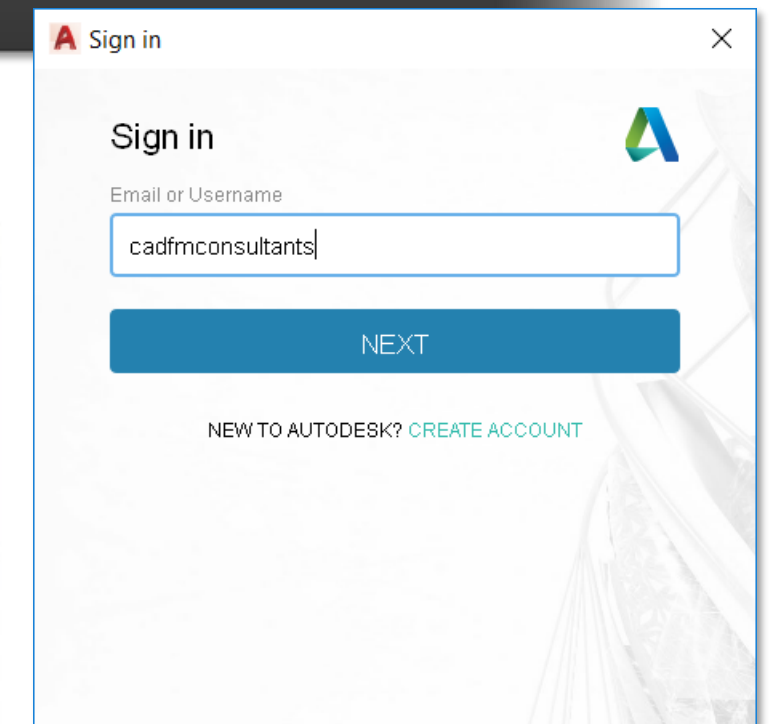
# A360 and the Cloud

# A360 and the AutoCAD Mobile App

1. **A360 Tab** – Link AutoCAD to your cloud based A360 account using the A360 tab (an Autodesk ID is required)



2. **AutoCAD Mobile app** – Originally known as AutoCAD 360, this is a cloud and browser based version of AutoCAD to mobilise your desktop!





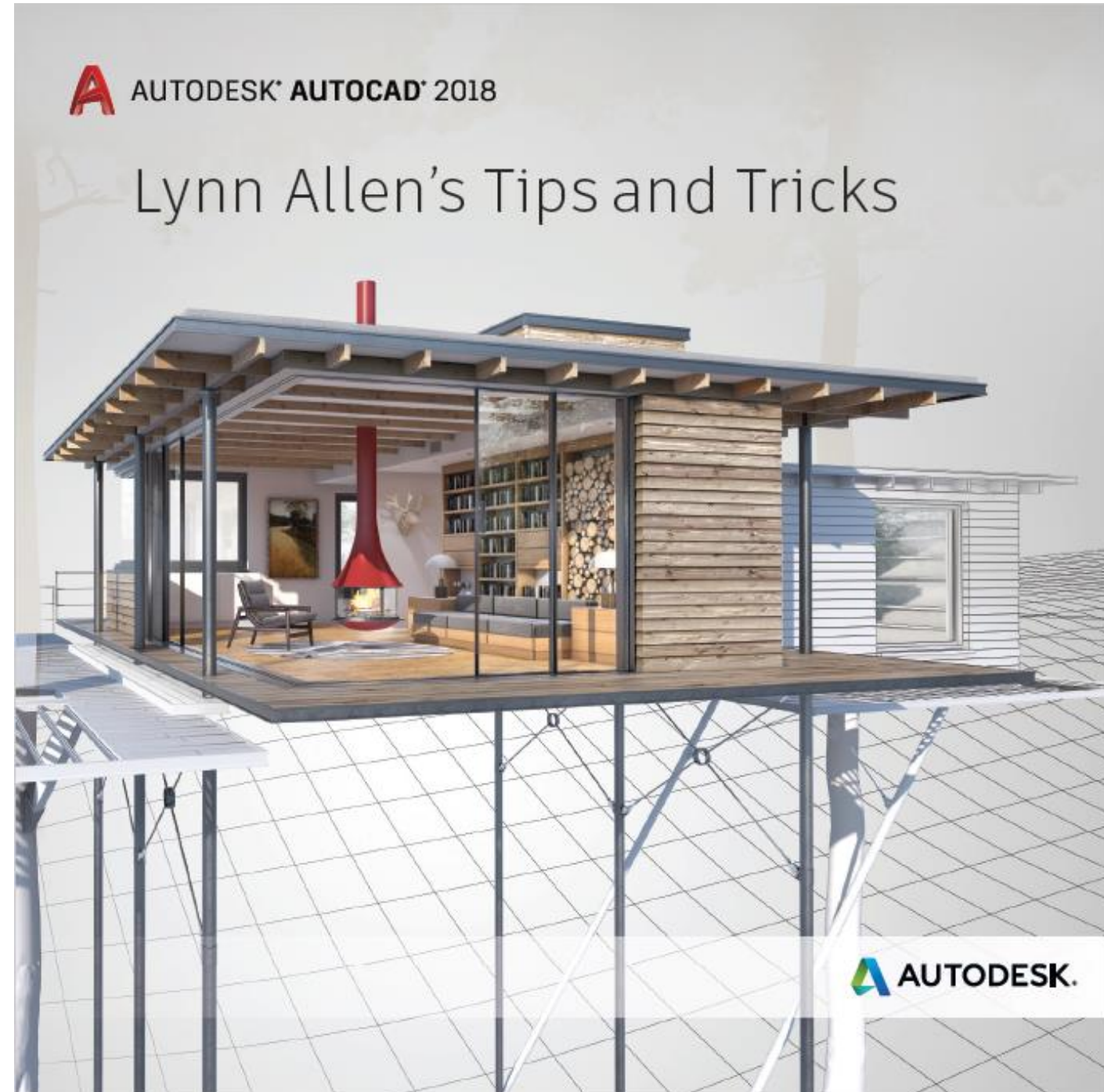


Thank you!



# Lynn Allen's AutoCAD 2018 Tips & Tricks

- All of these tips and more are in Lynn Allen's Tips & Tricks booklet for AutoCAD 2018
- Stop by the AutoCAD booth (**LG-016**) for your FREE copy!



# Stop by and say “Hello”!

- I will be at the AutoCAD booth when I’m not presenting classes – we’re at **Booth LG-016**
- Come and see the **AutoCAD Mobile app** in action on an iPad Pro at the booth too!
- Check out my AutoCAD classes on both **Lynda.com** ([www.Lynda.com](http://www.Lynda.com)) and **LinkedIn Learning** ([www.linkedin.com/learning](http://www.linkedin.com/learning)).

