

# Hands-on Precast Add-on for Revit

Bogdan Teodorescu

Product Owner  
Autodesk Revit



Hello,  
My name is **Bogdan Teodorescu**  
and I am the Product Owner for  
the Precast add-on developing  
team.



# Disclaimer

This document presents statements regarding future events and/or statements regarding planned or future development efforts for our existing or new products and services. We wish to caution you that such statements reflect our current expectations, estimates and assumptions based on factors currently known to us and that actual events or results could differ materially. Also, these statements are not intended to be a promise or guarantee of future delivery of products, services or features but merely reflect our current plans, which may change. Purchasing decisions should not be made based upon reliance on these statements. The statements made in this document are being made as of the time and date when it is initially issued. We do not assume any obligation to update any statements we make to reflect events that occur or circumstances that exist after the date of this presentation.

<http://www.autodesk.com/company/contact-us/customer-research-agreement>

**Name of research study: Project Bran**



# Class summary

- Learn how to set up the environment
- Learn how to split floors and walls according to user-defined rules
- Learn how to reinforce floors and walls according to user-defined rules
- Learn about shop drawings and CNC generation



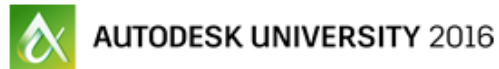
# Key learning objectives

At the end of this class, you will be able to:

- Define your precast elements and set rules for numbering;
- Perform segmentation for slabs and walls according to your pre-defined rules.
- Define reinforcement styles and apply them for precast elements.
- Customize the shop drawings and generate CNC files..



# Download the Class Materials



## ★ MSF21171-L - Hands-on Precast Add-on for Revit

Dan Peticila - Product Manager, Autodesk  
Bogdan Teodorescu - Product Owner, Autodesk

The purpose of this class is to reveal the design workflow for precast elements (walls and slabs) using advanced tools that automate the process of generating precast assemblies, shop drawings, and computer numerical control (CNC). This will help both fabricators and precast detailers to reduce the time spent modeling, generating shop drawings, and producing precast planar elements. This session features Revit.

### Learning objectives

1. Learn how to set up the environment
2. Learn how to split floors and walls according to user-defined rules
3. Learn how to reinforce floors and walls according to user-defined rules
4. Learn about shop drawings and CNC generation

### Additional information

LEVEL OF EXPERTISE:  
Intermediate

PREREQUISITE SKILLS OR KNOWLEDGE:



### Class schedule

+ Monday, Nov 14, 1:30 PM - 2:30 PM  
– San Polo, 3403, Level 3  
59 Seats Remaining

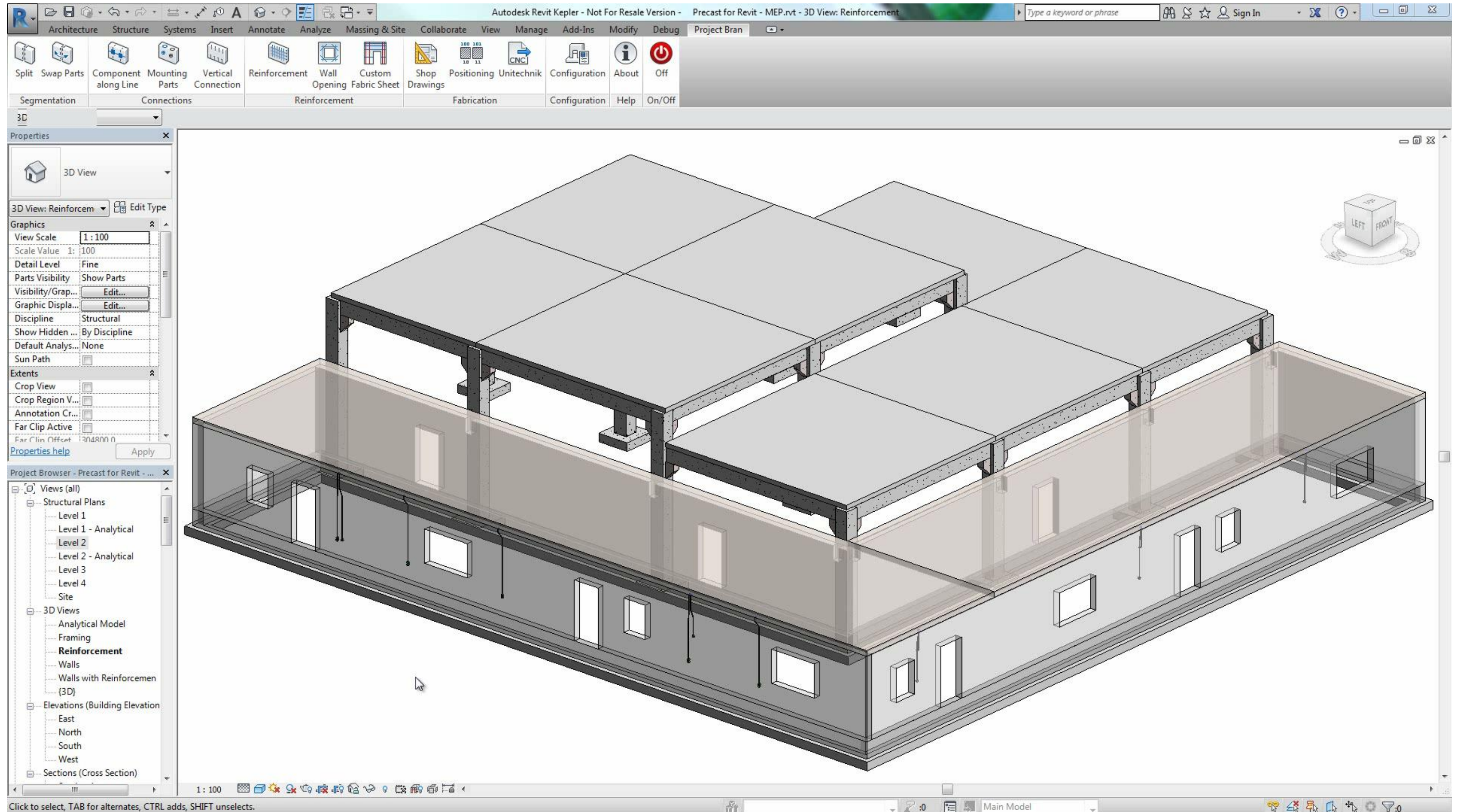
### Class Materials Download

Handout  
Additional Materials





# Short Demo for Precast Add-on



# Co-Speaker

I would like to Welcome and introduce:

**Dan Peticila** – Product  
Manager for Concrete and  
Precast for Revit, Autodesk





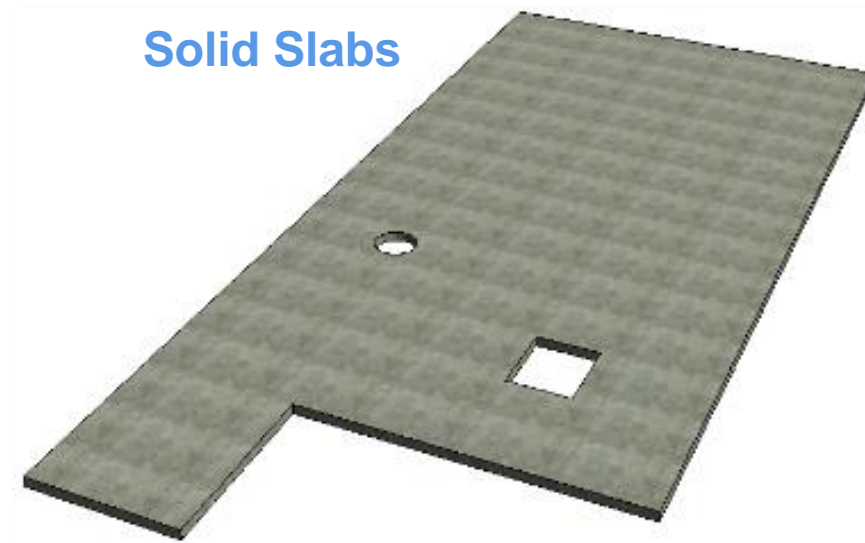
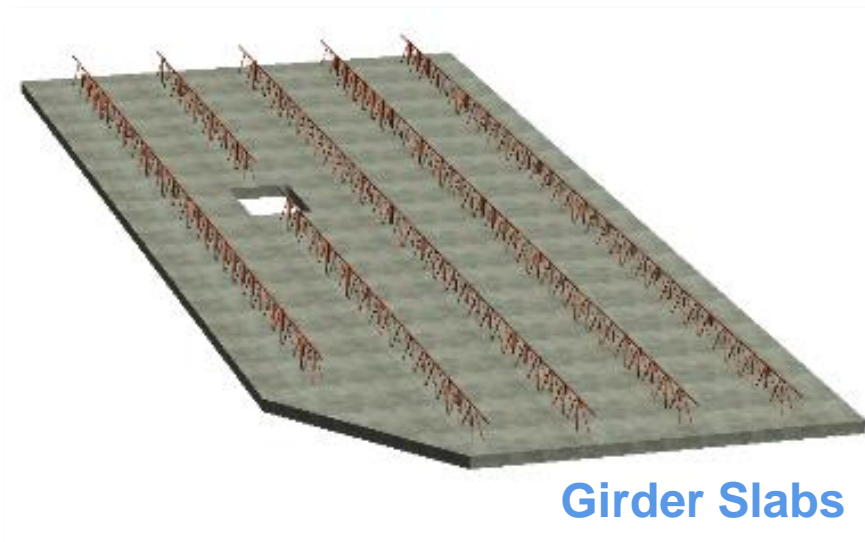
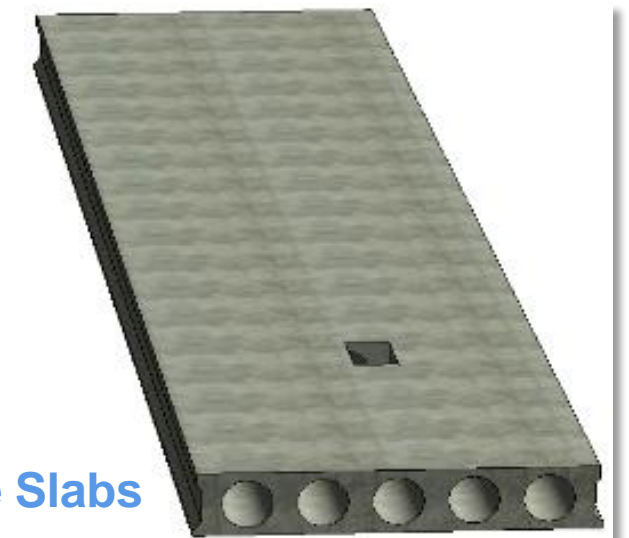
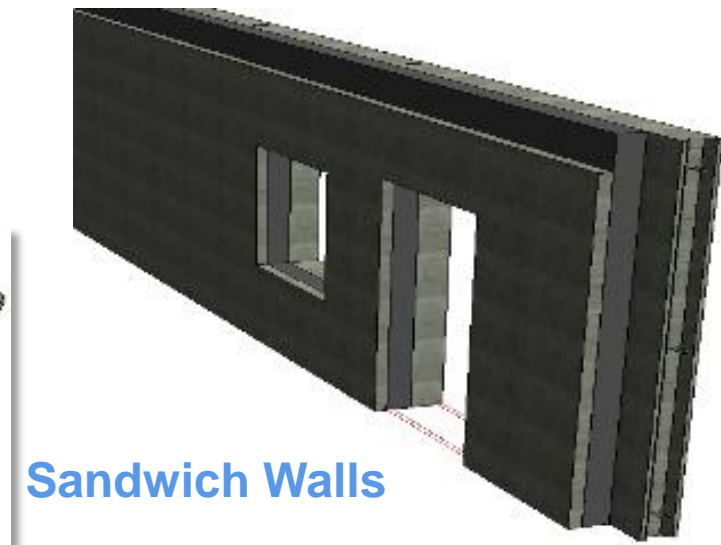
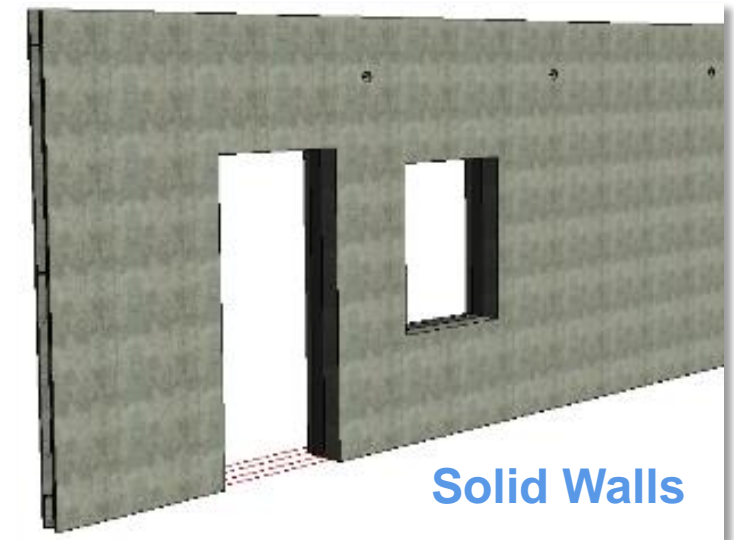
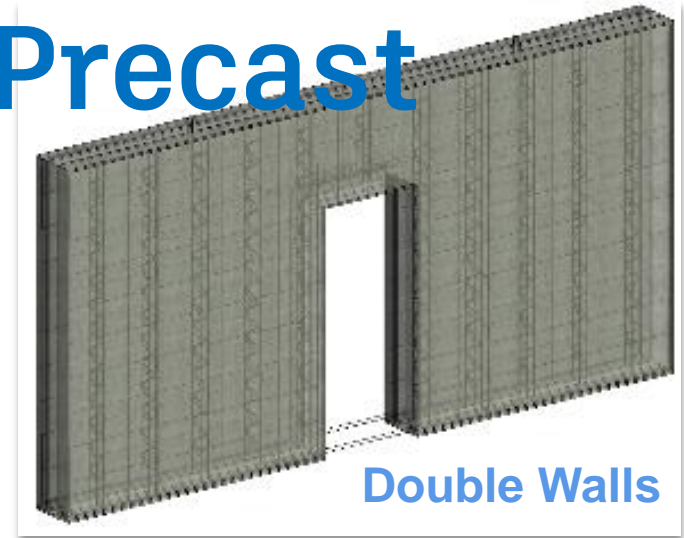
# Precast Fabrication For Revit





# Precast Fabrication for Revit | **Structural Precast**

- Support for multiple stages of the precast workflow
- Applicable for planar elements for buildings
- Automatic / Manual Model Segmentation

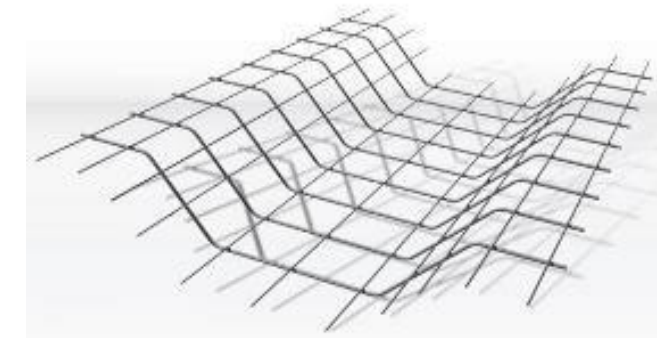


# Precast Fabrication for Revit | **Key Highlights**

- **Fabrication modeling automation**
- **Automatic Reinforcement Generation**
- **Automatic Shop drawings**
- **Connect to Fabrication automation with CNC (PXML and Unitechnik)**

**Unitechnik**

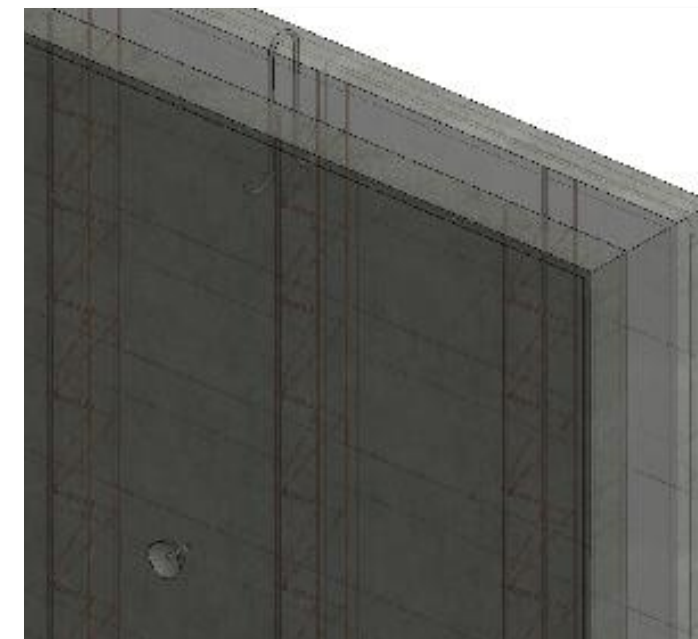
**progress**  
Maschinen & Automation



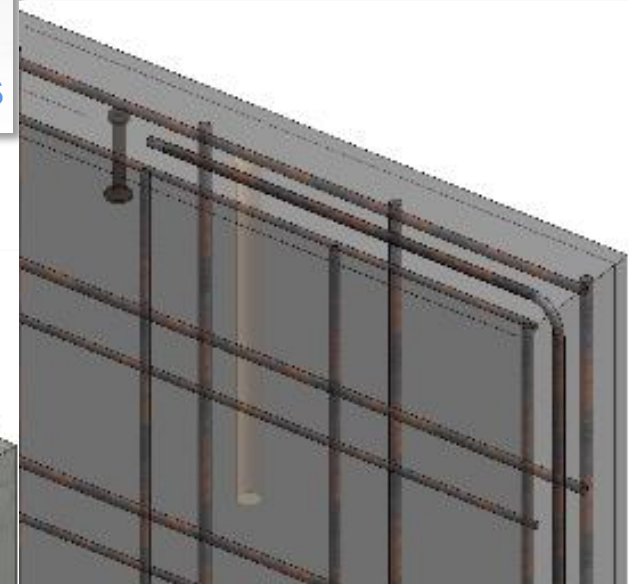
Bent (custom) fabric sheets



Custom fabric sheets



Welded trusses



Connections, fixing and lifting parts

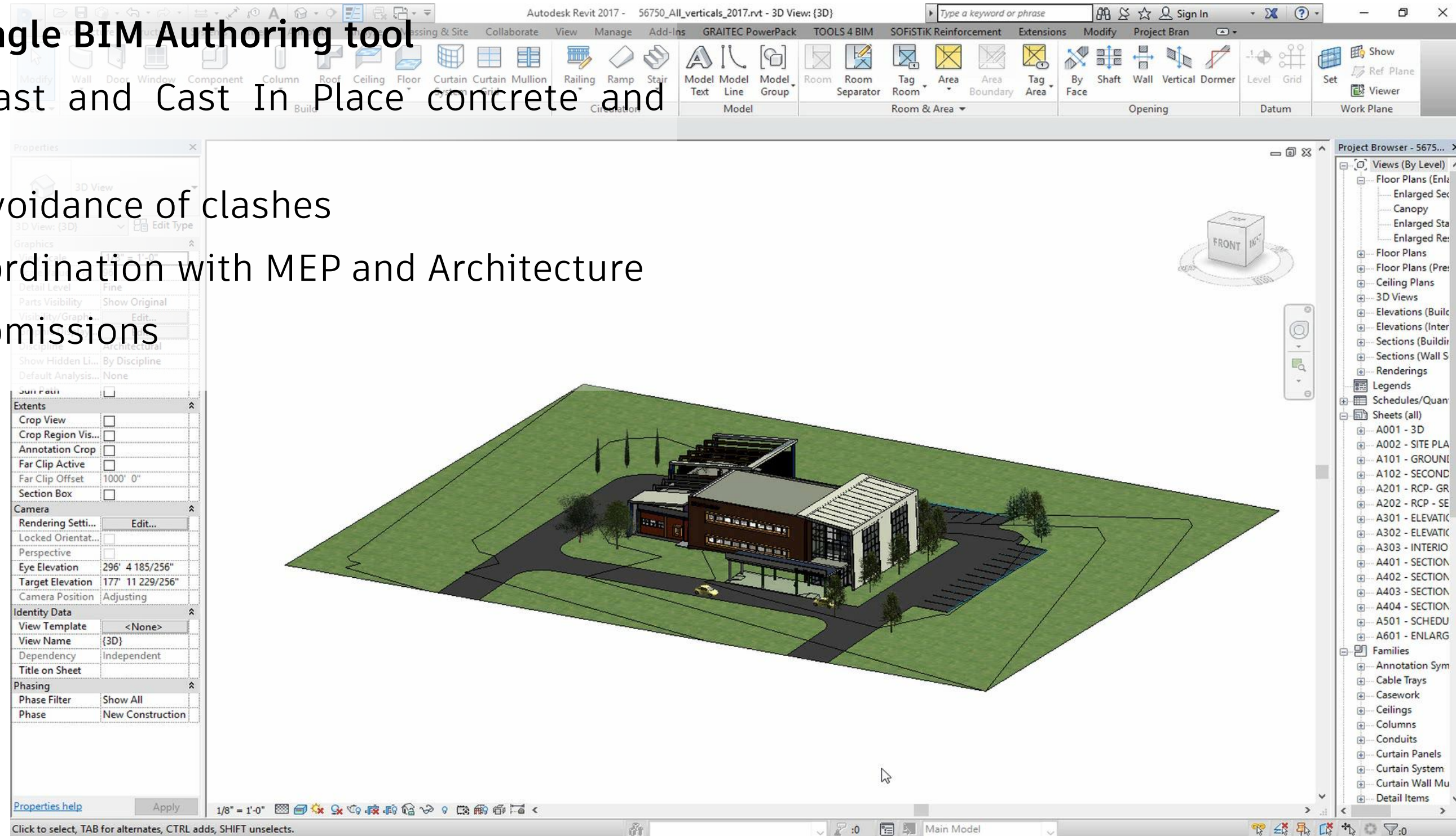




# Precast for Revit | BIM benefits

## Precast modeling in a single BIM Authoring tool

- Cross-material (Precast and Cast In Place concrete and steel) modeling
- Easy detection and avoidance of clashes
- Cross disciplinary coordination with MEP and Architecture
- Minimize errors and omissions

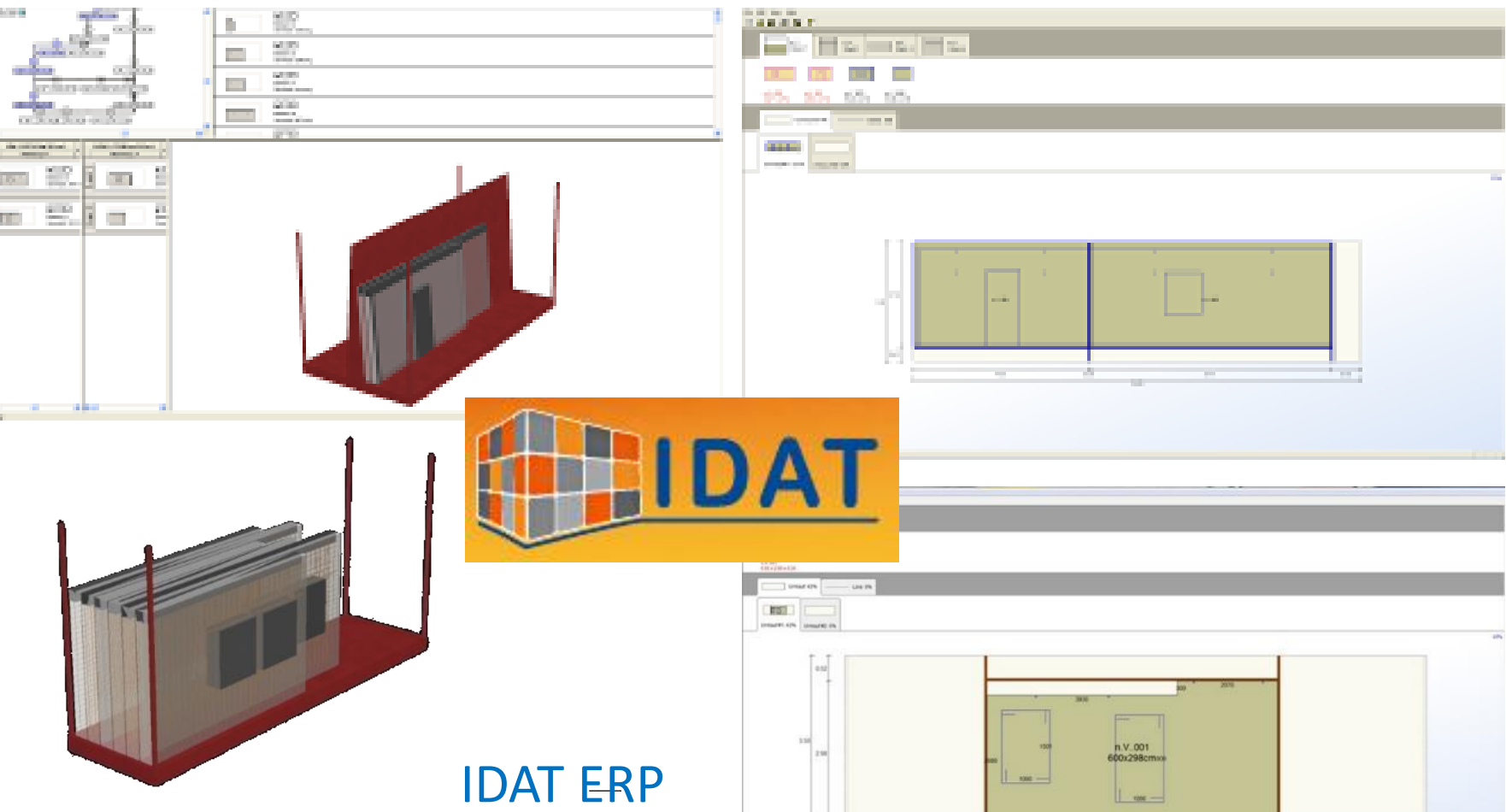




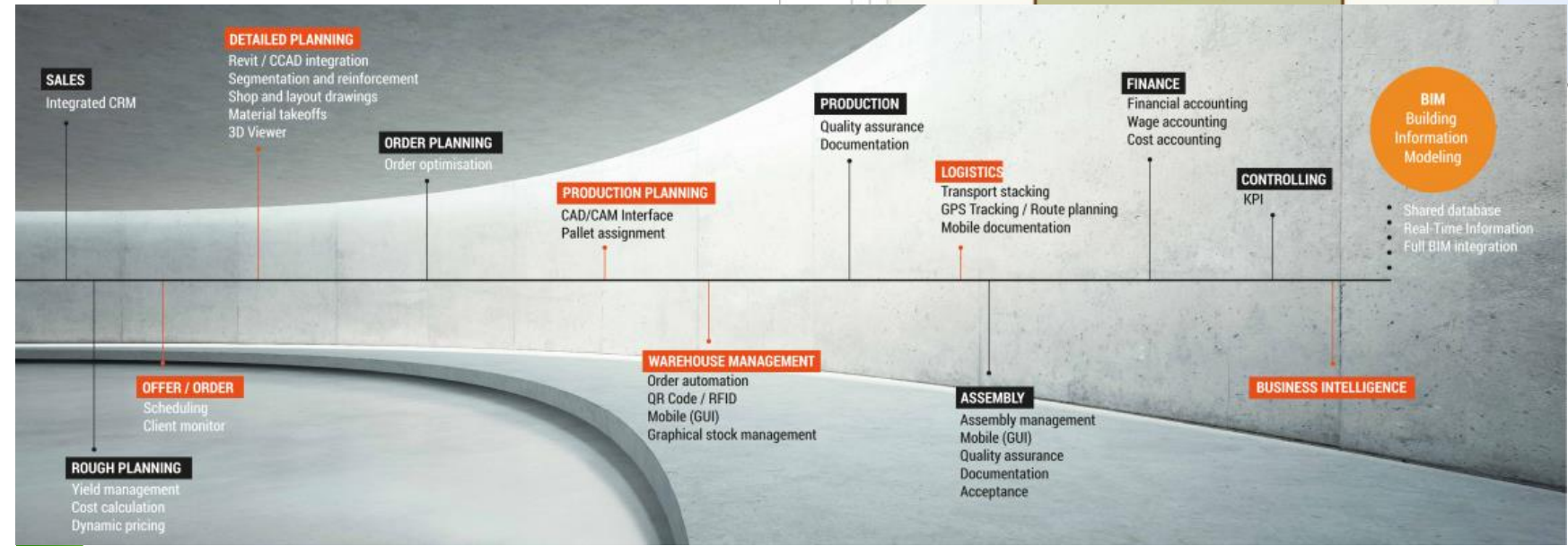
# Precast for Revit | MIS & Fabrication Logistics

Transport Stacking

Palletizer



IDAT ERP



ebos®

Has revolutionized the precast industry!

PROGRESS GROUP



Unitechnik

Join the conversation #AU2016 #FabForum

AUTODESK

# NAMER | Architectural Precast



# Let's get started! 😊

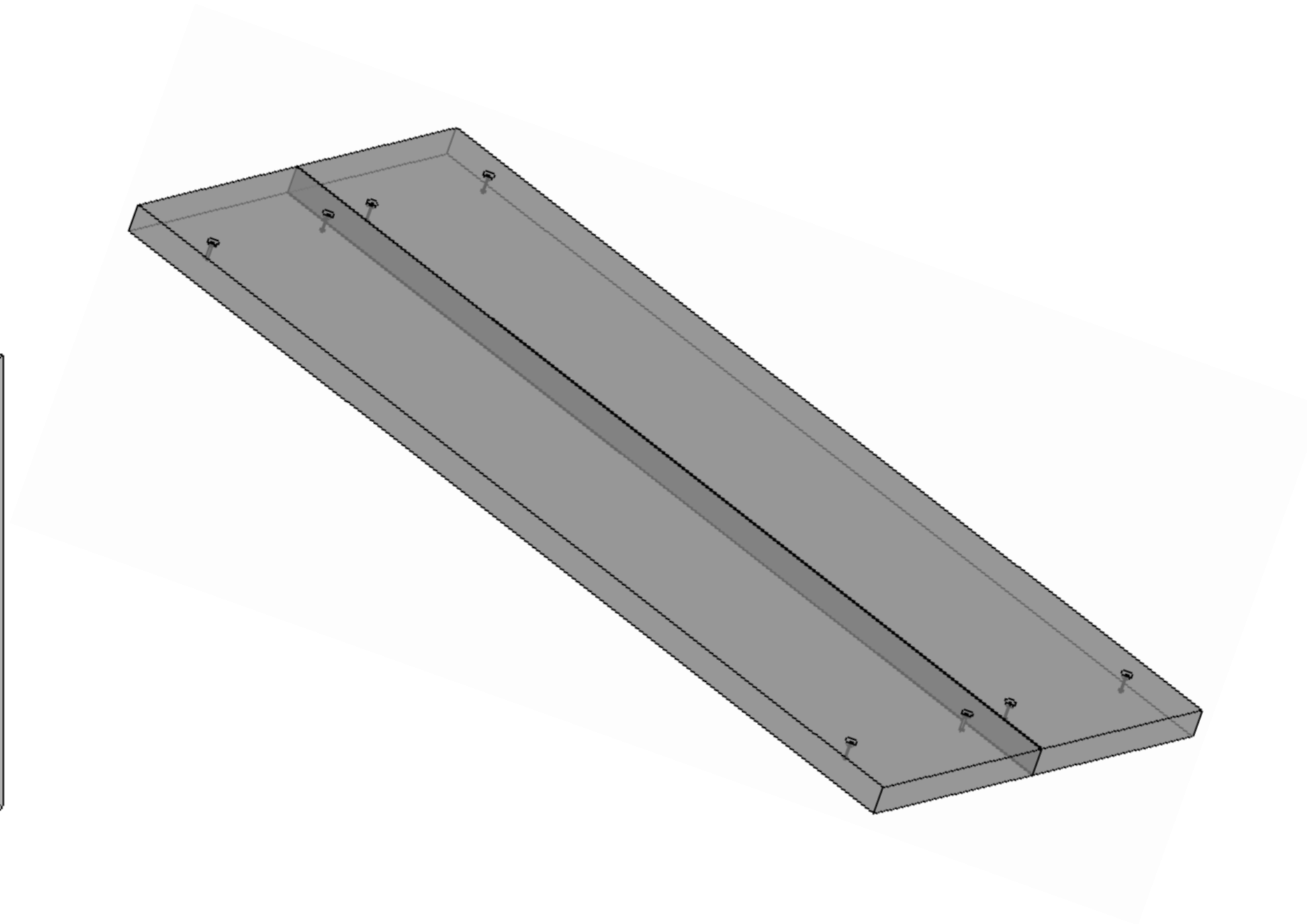
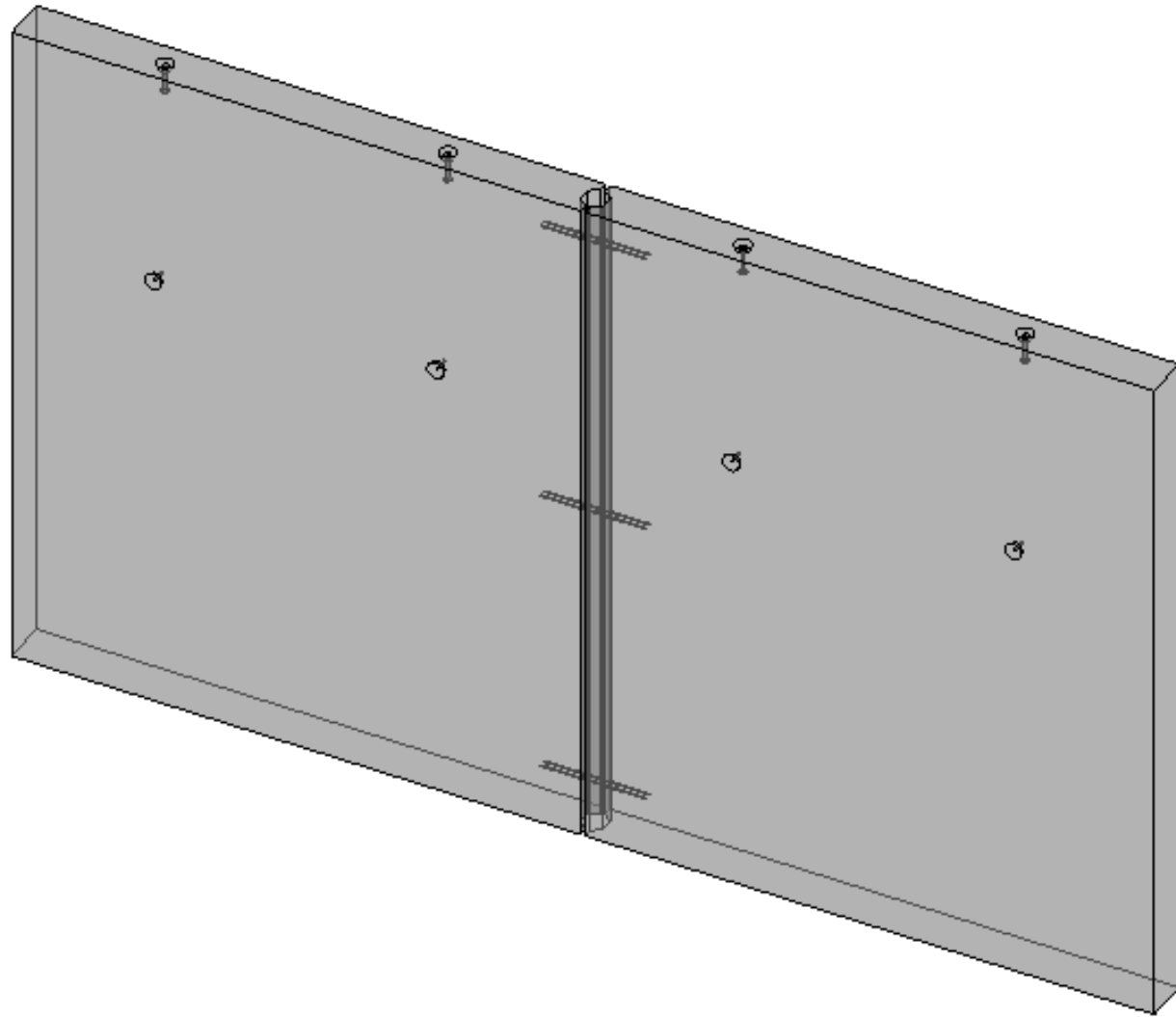


# Setting-up the environment

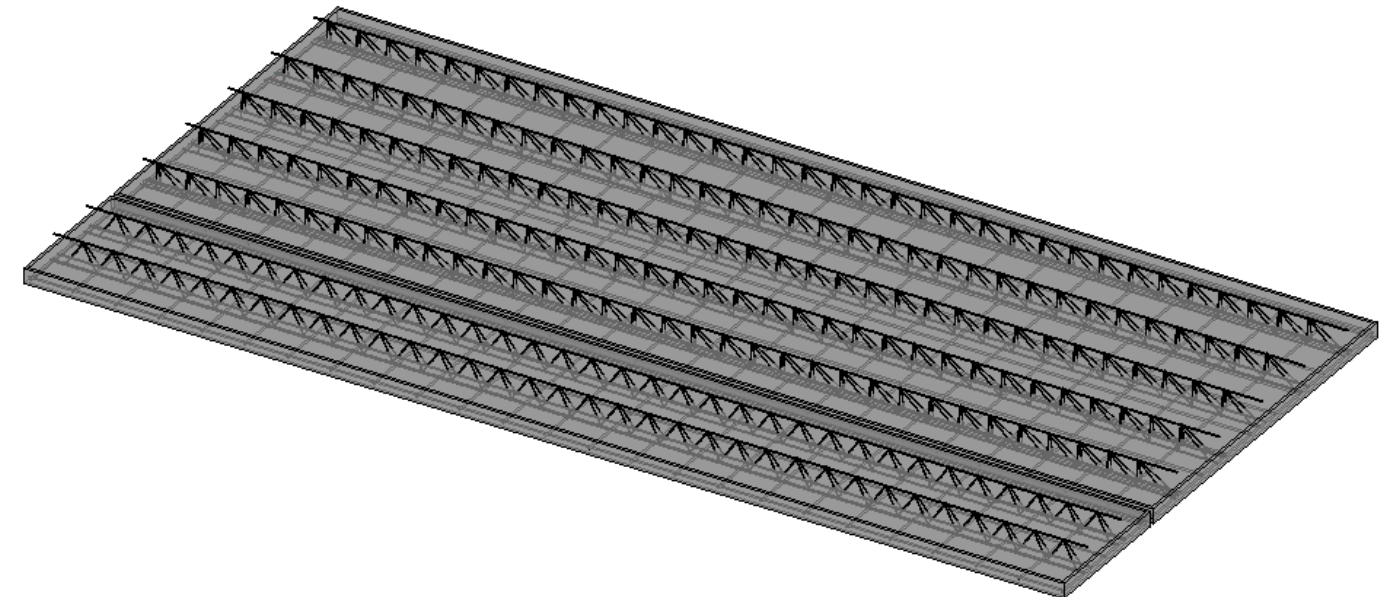
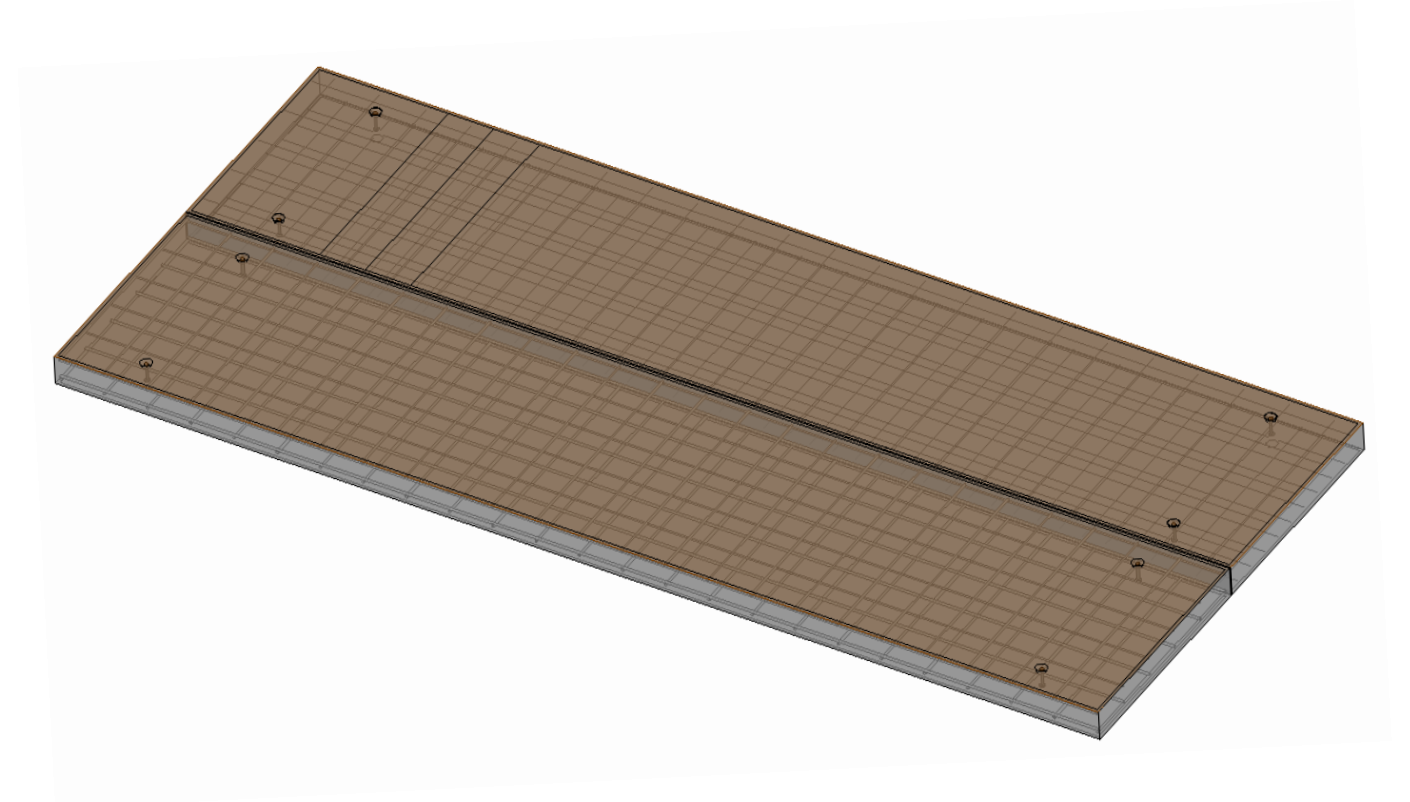
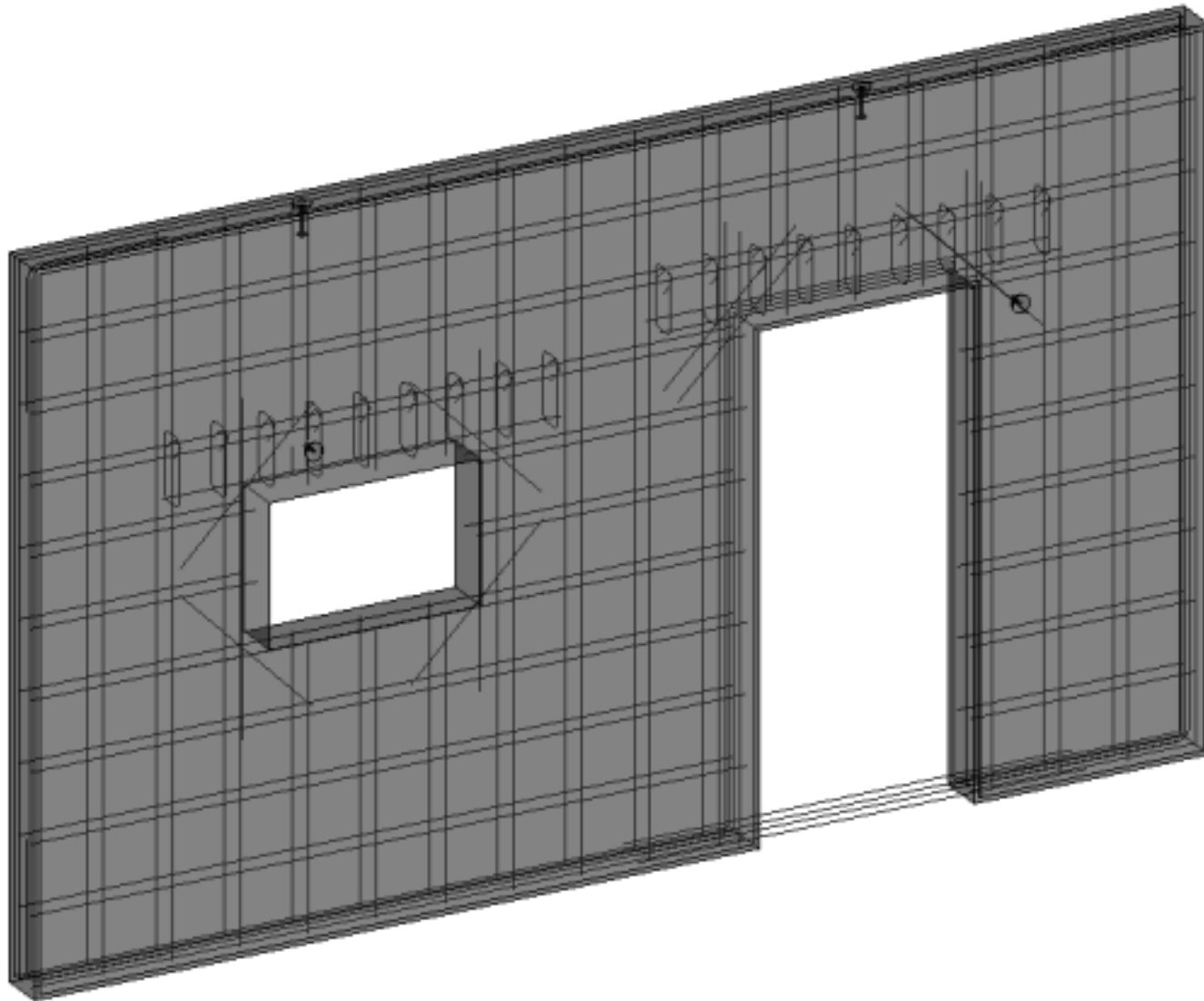




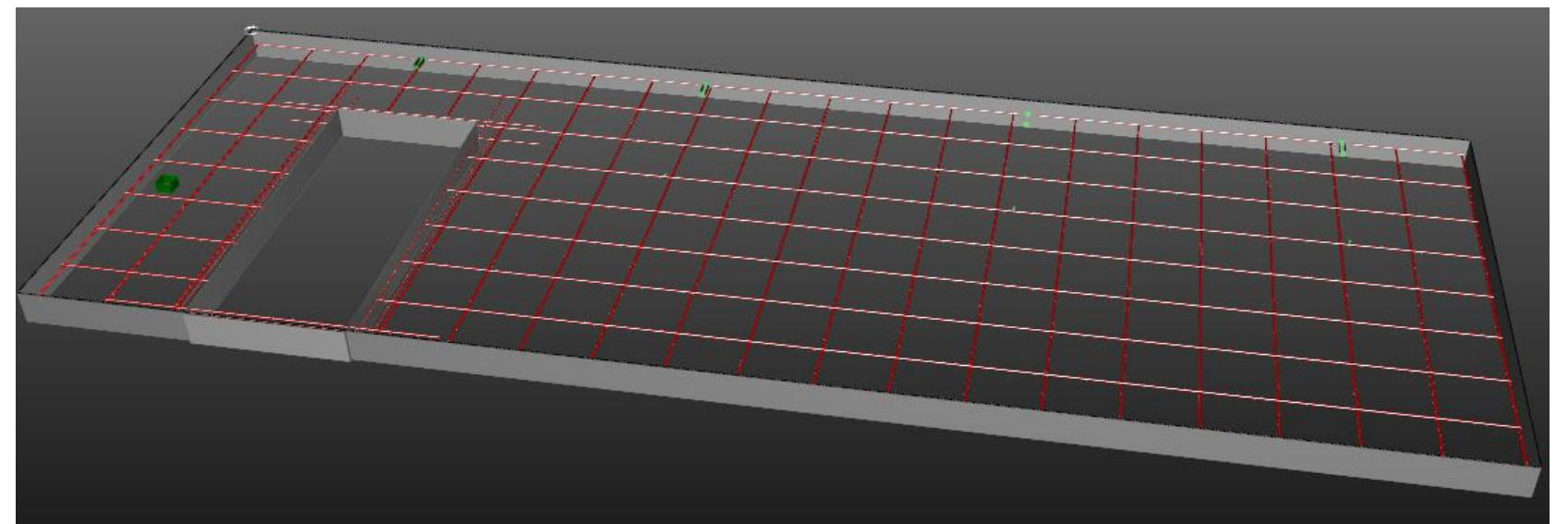
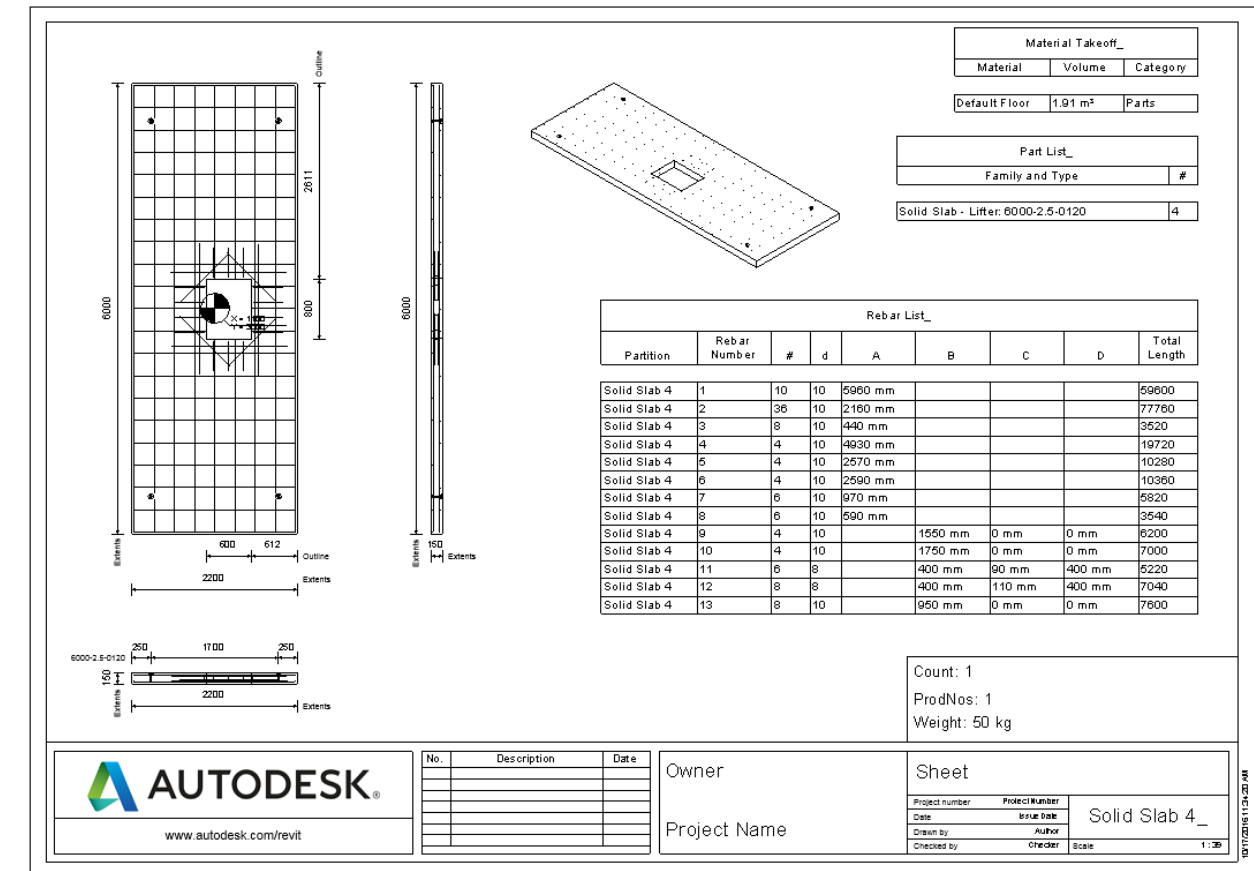
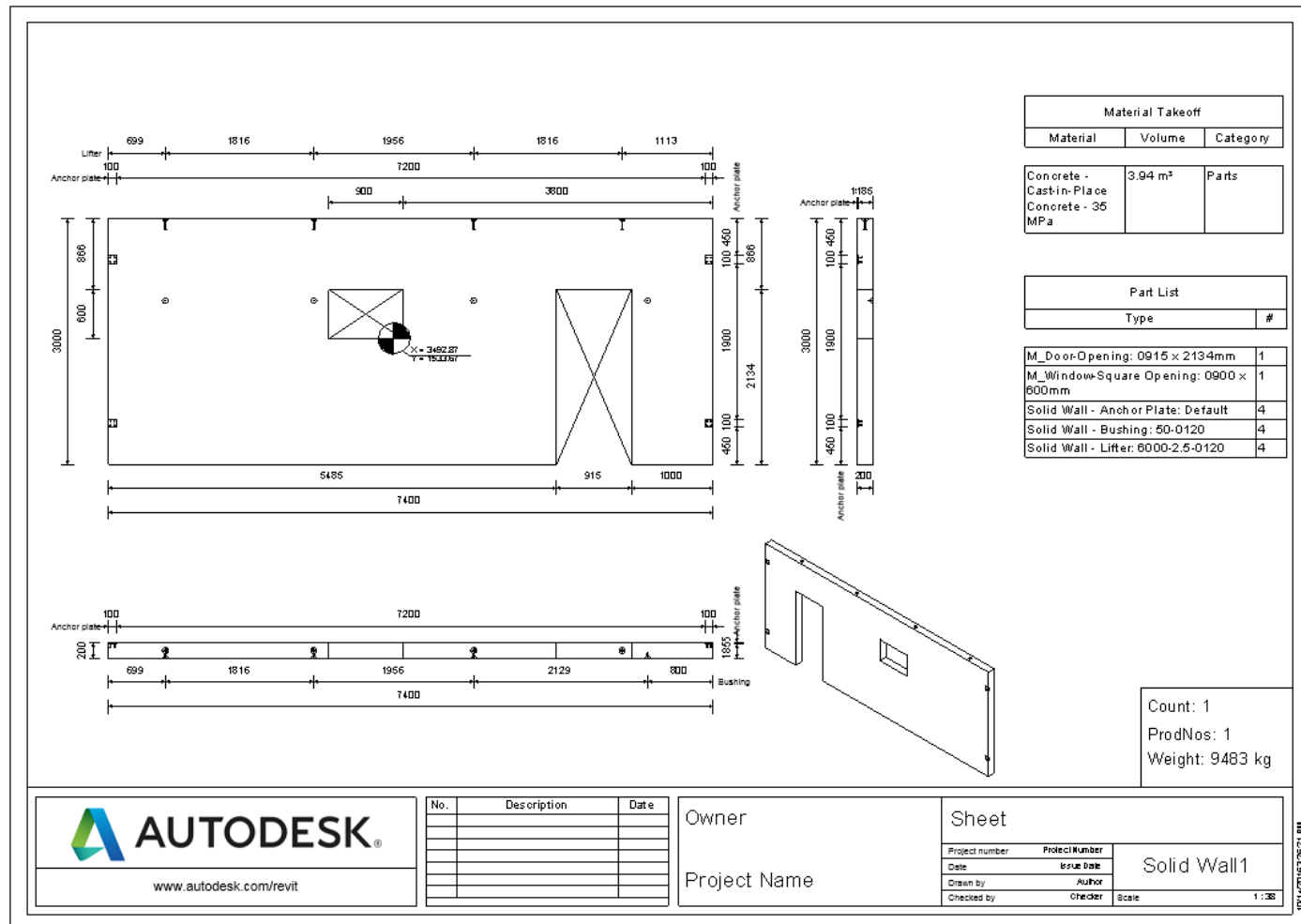
# Segmentation of walls and slabs



# Reinforcing walls and slabs

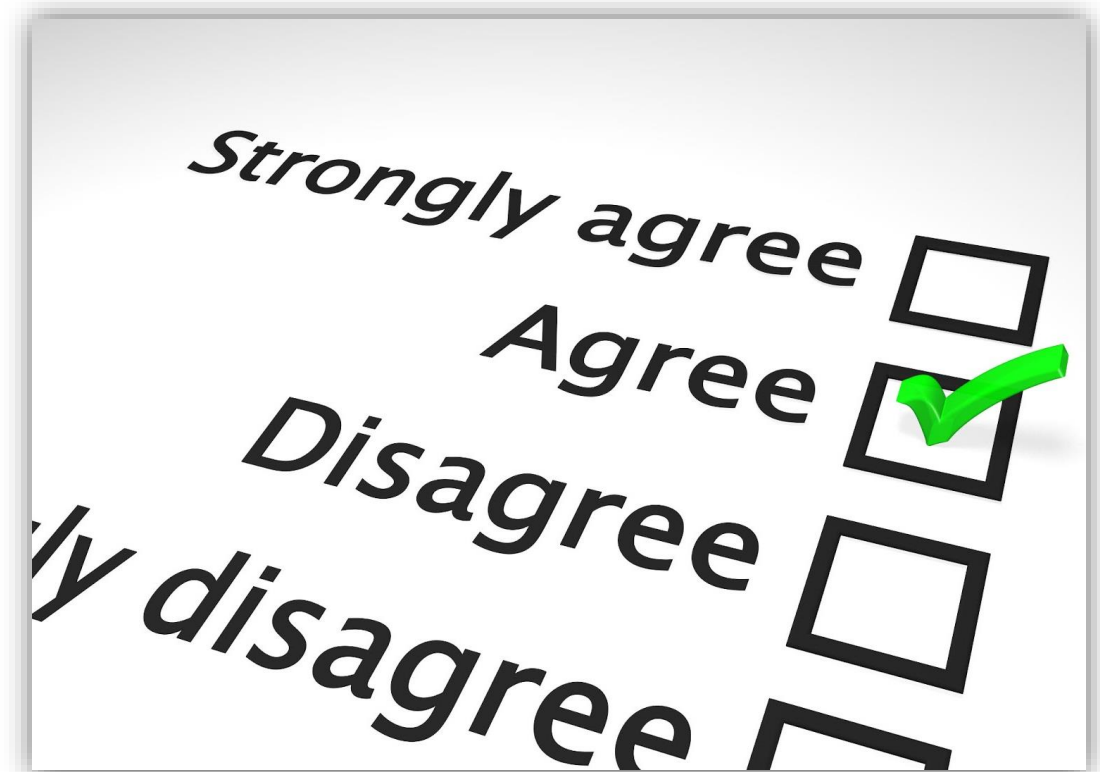


# Shop drawings and CNC export



# How did I do?

- Your class feedback is critical. Fill out a **class survey** now.
- Use the AU mobile app or fill out a class survey online.
- Give feedback after each session.
- AU speakers will get feedback in real-time.
- **Your feedback results in better classes and a better AU experience.**





# Thank you very much!



