

# Advance Steel: Drawing Styles customization

Emy Nestor

Technical Support Senior Specialist  
Autodesk Ltd

# Hello

My name is **Emy Nestor**  
from Autodesk Technical Support

Happy to assist you 😊



# Class summary

- Brief presentation of a drawing style and of the Drawing Styles Manager (DSM)
- Learn through exercises how to create and use a new drawing style
- Discover several of the common used options and tips & tricks in configuring drawing styles

# Key learning objectives

At the end of this class, you will be able to:

- Create and configure a drawing style using **Drawing Style Manager**
- Understand the existing settings and options of a drawing styles
- Know how to configure and use model objects, labels and dimensions
- Know recommendations for using and configuring the drawing styles using Drawing Style Manager

# Key learning objectives

At the end of this class, you will be able to:

- **Get familiar with Drawing Style Manager settings** in order to continue the customization of your drawing styles for better automatic output


# Hands-on Lab Assistants


I would like to Welcome and introduce my lab assistants:

- **David Naylor**, Autodesk Inc., Technical sales Specialist
- **Dumitru Berteanu**, Autodesk SRL, Sr. User experience designer



# Download the Class Materials

 AUTODESK UNIVERSITY 2015

 **MSF9970-L - Advance Steel: Drawing Styles Customization**

Emy Nestor - Structural Engineer/Technical support specialist, autodesk srl

In this hands-on lab you will learn how to customize a drawing style to suit your specific requirements for detail drawing, taking into account what should be shown in detail, how should it be shown, labels, and dimensions to be created. We will walk through the workflow of configuring drawing styles using the Drawing Styles Manager interface, with an explanation of existing options and settings. We will configure and use model objects, labels, and dimensions in specific scenarios. This class will include configuration and workflow recommendations for an efficient way of using drawing styles. Please note that this class is suitable for intermediate and advanced users only.

**Learning objectives**

1. Learn the main structure of a drawing style using Drawing Styles Manager
2. Discover by direct testing the existing settings and options of drawing styles
3. Learn how to configure and use model objects, labels, and dimensions
4. Learn workflow recommendations for using and configuring the drawing styles and Drawing Style Manager

**Additional information**

SECONDARY INDUSTRY SEGMENT:  
Engineering Service Providers






OCCUPATION/PROFESSION:  
Building/Civil Engineering, Civil Engineer and Technician, Structural Engineer/Technician, Technical Drafter

PRODUCTS:  
Advance Steel

PROFESSIONAL CREDIT:  
None

CLASS FORMAT:  
Hands-on Lab

CLASS LENGTH:  
1 hour


**Class schedule**


Monday, Nov 30, 11:30 AM - 12:30 PM  
– San Polo 3403, Level 3  
64 Seats Remaining

**Similar classes**

- MSF9965-L - Advance Steel: Hands-on to Drawing Processes Customization
- MSF12017-L - Advance Steel: Hands-on to Extending Detailing Capabilities with Scripting
- MSF12001-L - Advance Steel: Customizing Profile Database

**Class Materials Download**

 Handout

 Additional Materials

# Let's get started





# Drawing style

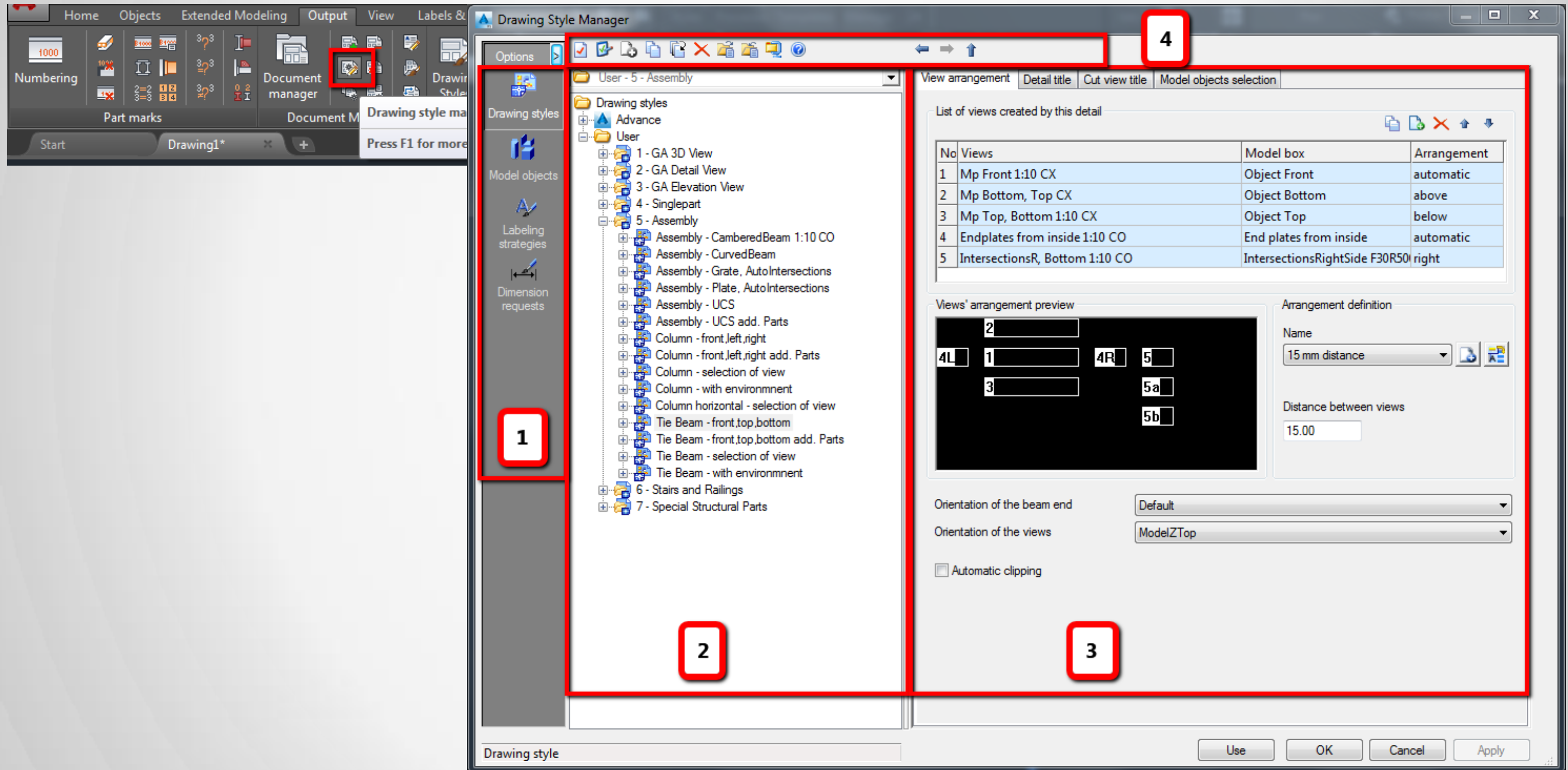
**It is a template, a set of rules to be applied to create a detail drawing, controlling:**

- **what is shown in detail and how it is shown**
- **how it should be labeled**
- **how it should be dimensioned**

## Drawing Style Manager

**→ the interface to configure, manage and use the drawing styles**

# Drawing Style Manager



# Exercises

*Exercise 1: Create a new drawing style by full duplicating an existing one*

*Exercise 2: Select the new created DS and open each page from Properties Panel with the general settings; remark the content and purpose of each one*

*Exercise 3: Configure the new DS to create the first view as the FRONT view of the assembly; generate a detail drawing*

*Exercise 4: Create and add new views for the TOP and BOTTOM views of the assembly generate a detail drawing*

# Exercises

*Exercise 5: Configure the Front view to display the main beam with its Cross section symbol  
Generate a detail drawing*

*Exercise 6: Create a specific label for the “tab plates” – the plates with the model role “Tab plate”*

- *Create the model object “Tab plate”*
- *Create the Labeling strategy & Label content for the model object Tab plate*

*Generate a detail drawing*

*Exercise 7: Create a specific dimension definition for the TOP view in respect with the following requests:*

- *Horizontal dimension line, linear with relative distances*
- *To dimension only the plates attached to the main part and seen from Top and not the ones seen from their width*
- *There should be separate dimension lines for the plates in the upper side and for the plates placed in the bottom side of the view*
- *The plates should be dimensioned relative to the main part left & right extreme points*

**Questions ?**

# Session Feedback

→ You can help us make AU 2016 better!

- Session surveys can be completed in AU app, mobile device, PC, or at a survey station.
- Best to do it right after the session
- **AU 2016 passes given out each day!**



# Thank you very much !





